

Supporting Information

Glutathione-sensitive Mesoporous Nanoparticles Loaded with Cinnamaldehyde for Chemodynamic and Immunological Therapy of Cancer

Lichong Zhu^a, Wenyue Li^a, Chuang Liu^a, Saisai Yue^a, Yuanyuan Qiao^a, Yingying Cui^a,

Junwei Cheng^a, Ming Zhang^c, Peisen Zhang^{a,}, Beibei Zhang^{b,*}, Yi Hou^{a,*}*

^aCollege of Life Science and Technology, Beijing University of Chemical Technology, Beijing, 100029, China.

^bCollege of Bioengineering, Henan University of Technology, Zhengzhou, Henan 450001, China.

^cDepartment of Pathology, Peking University International Hospital, Beijing, 102206, China.

*Corresponding authors: zhangps@iccas.ac.cn; zhangbb058@163.com; houyi@iccas.ac.cn

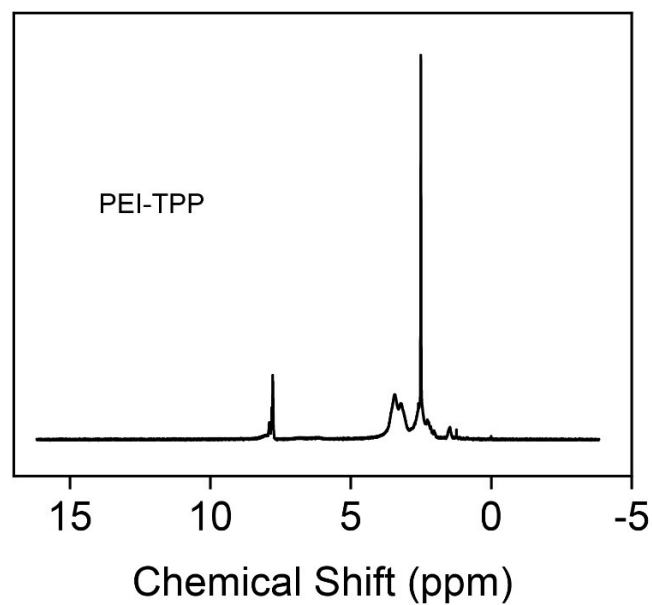


Figure S1. The ^1H NMR spectra of the PEI-TPP.

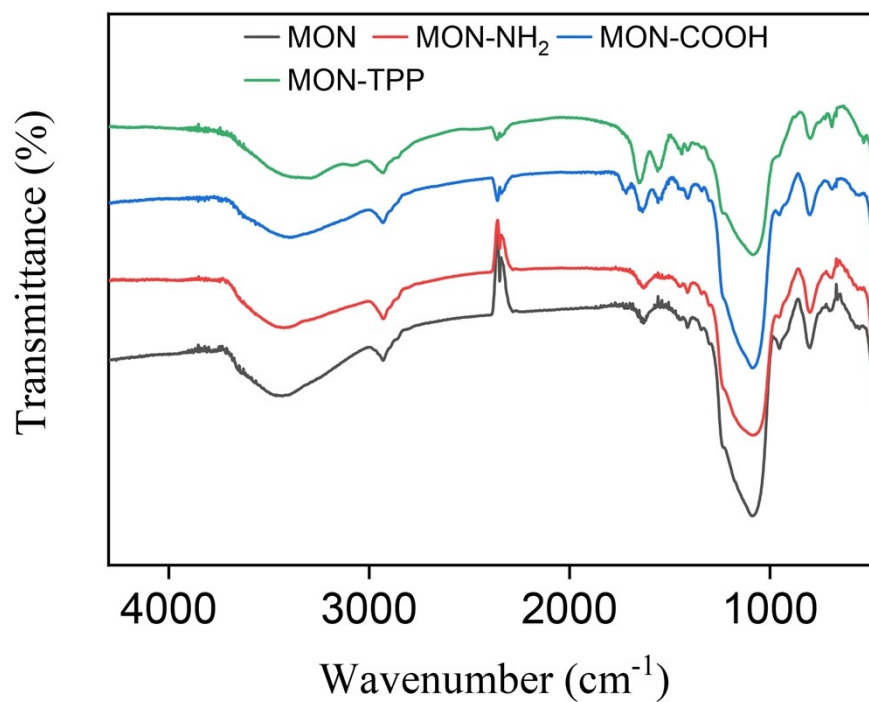


Figure S2. The Fourier transform infrared spectroscopy of different nanoparticles.

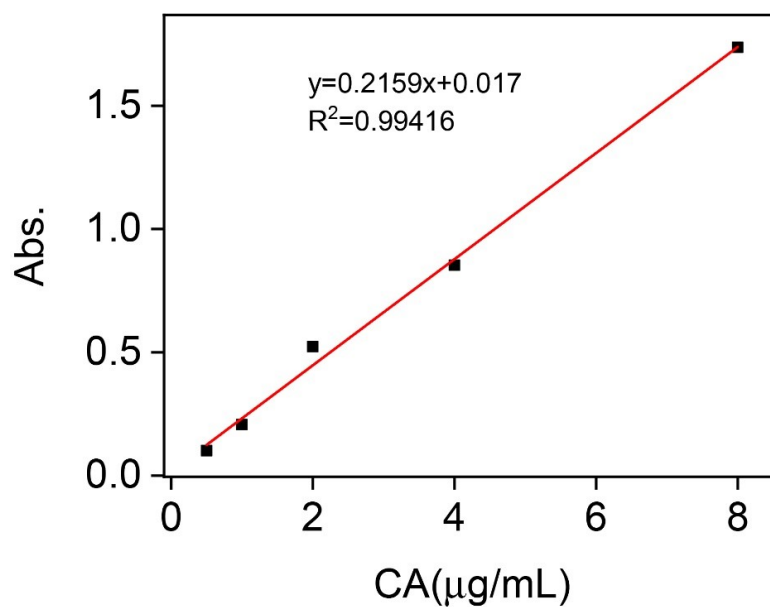


Figure S3. The standard curve of CA at 290 nm.

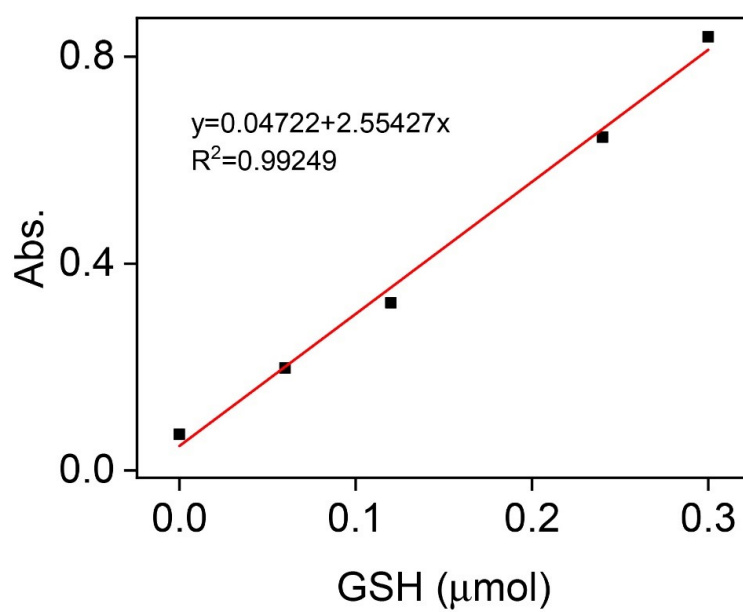


Figure S4. The standard curve of the reaction of GSH between and DTNB at 412 nm.

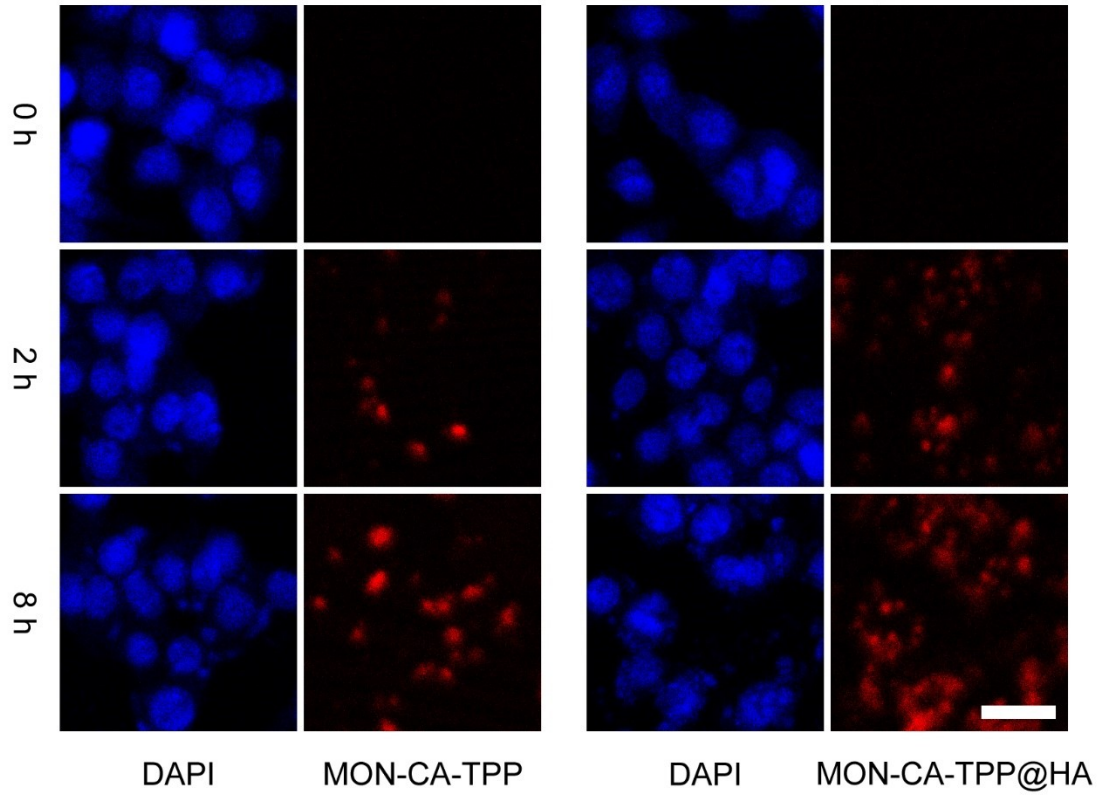


Figure S5. The cell uptake images of MON-CA-TPP and MON-CA-TPP@HA. Scale bar: 25 μm .

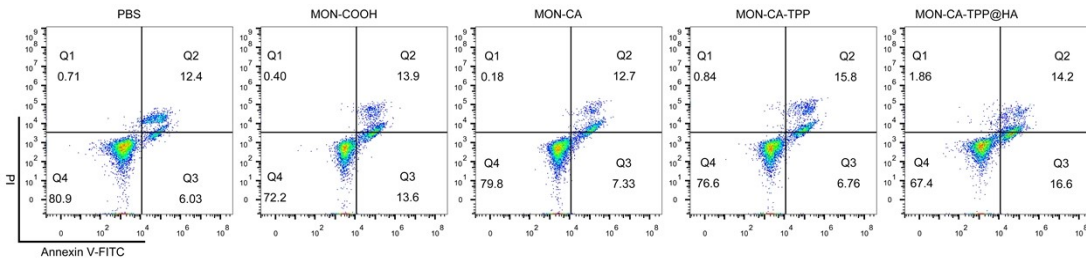


Figure S6. Flow cytometry apoptosis assay stained with annexin-FITC and PI after varying treatment.

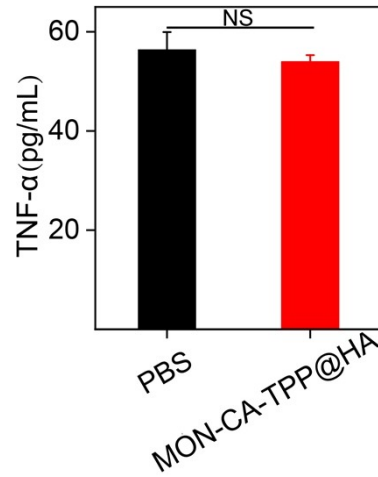


Figure S7. ELISA analysis of TNF- α in tumor tissues. Statistical significances, T test (* $p < 0.05$, *** $p < 0.001$). NS: no significance.

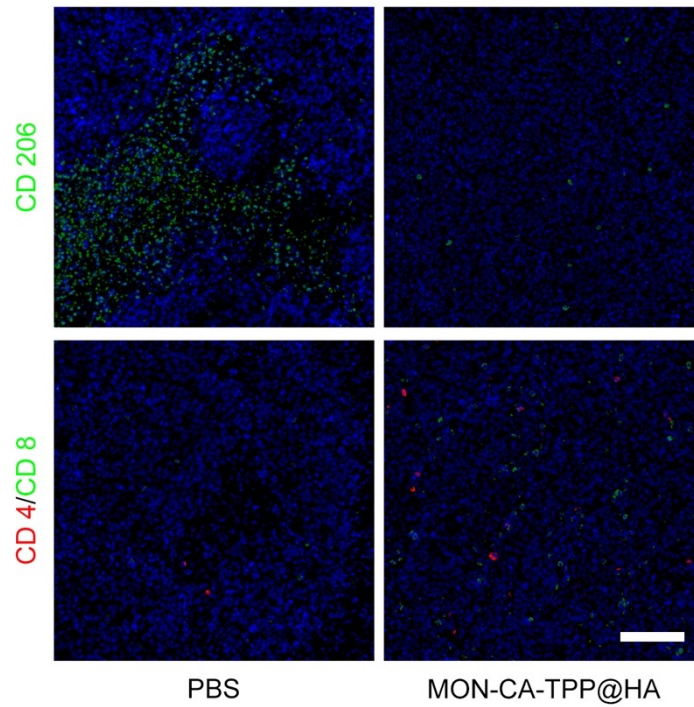


Figure S8. Immunofluorescence images of tumor tissue slices showing the staining of T cell markers (CD 4, red; CD 8, green) and M2 macrophages (CD 206). Scale bar: 100 μm .

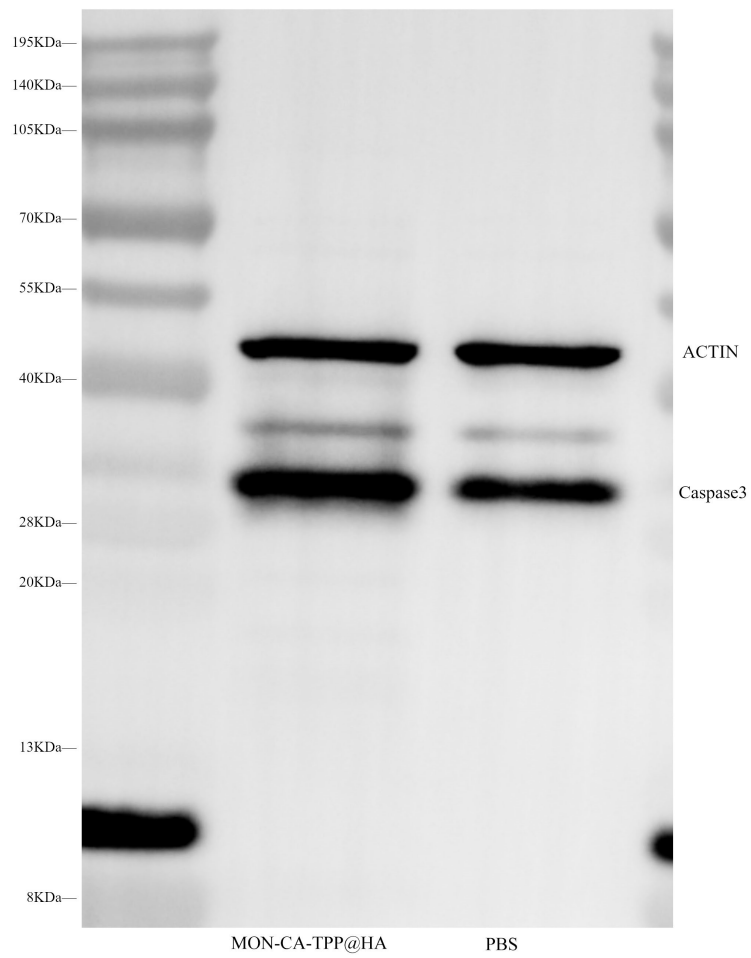


Figure S9. The picture of whole blots.

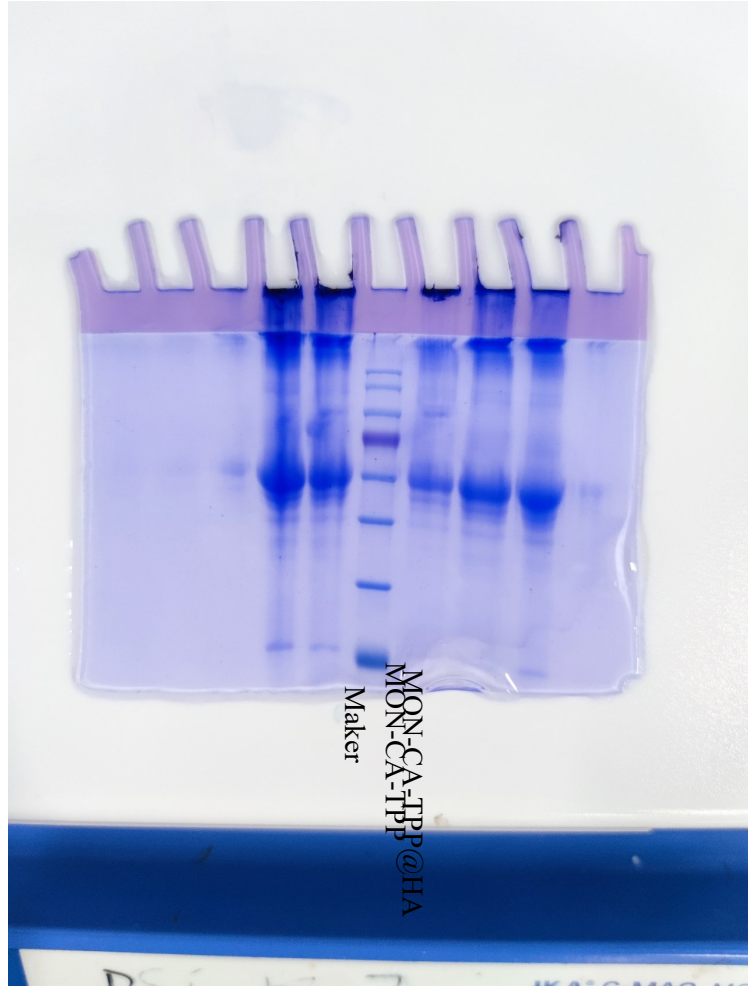


Figure S10. The raw data of gel electrophoresis images.