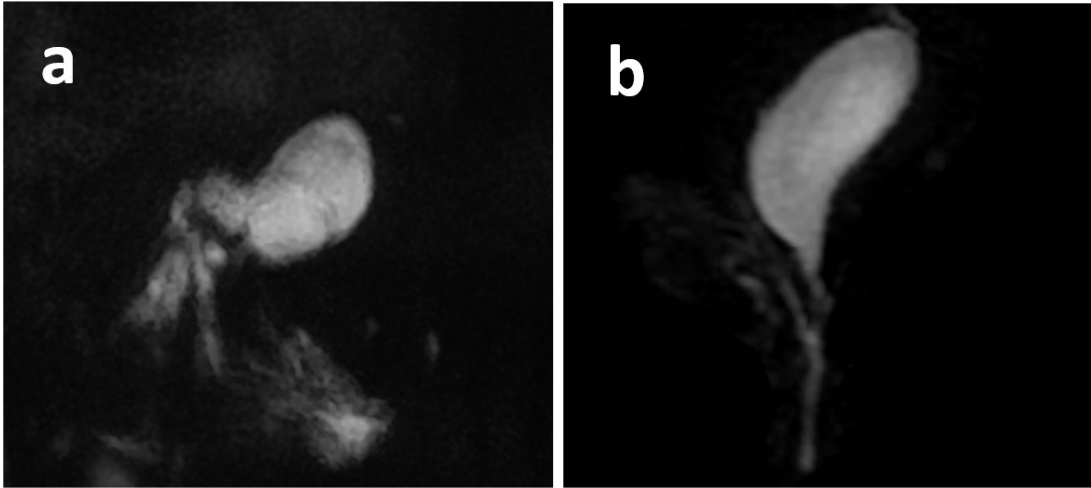
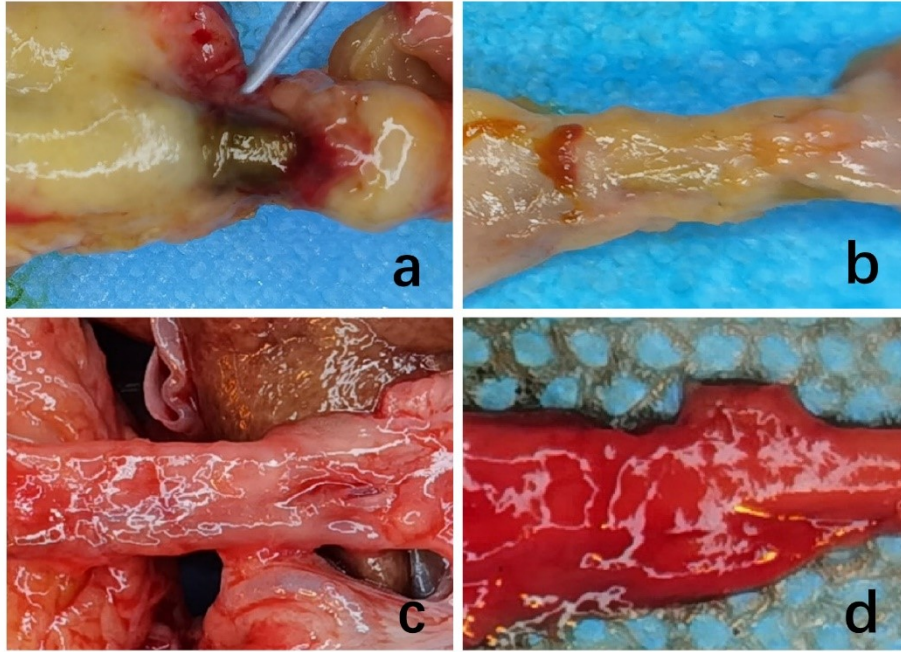


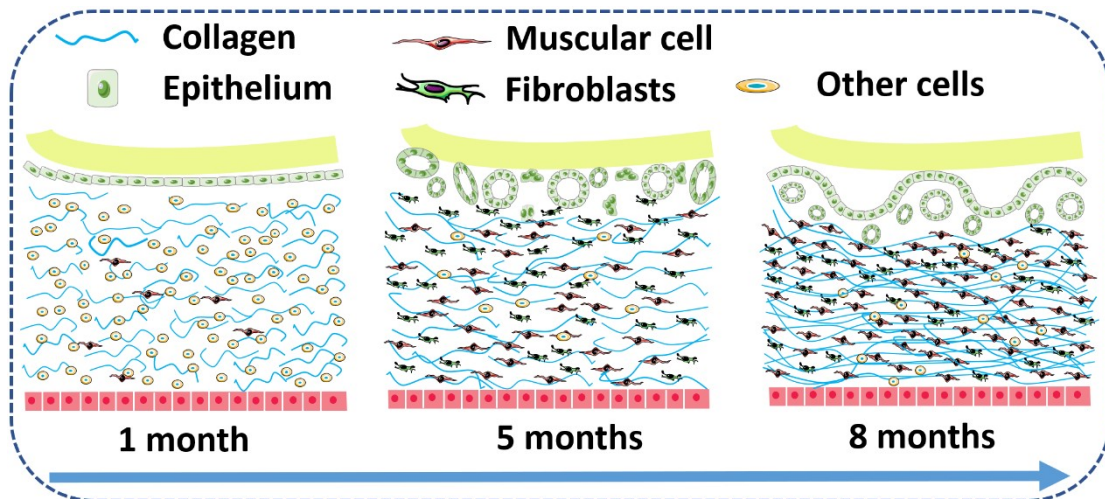
S1 Shore hardness of the PCL/PEG composites scaffolds made with different PEG content.



S2 MRI image of gall bladder and extrahepatic bile duct in sham group (a) 3 months and (b) 8 months after surgery.



S3 The anastomosis region with both native bile duct and newly formed bile duct after 1 month (a), 5 months (b) and 8 months (c) of in vivo implantation of PE1 ABD, as well as anastomosis region of sham group after 8 months (d).



S4 Schematic diagram of the biliary tissue regeneration after 1 month, 5 months and 8 months of in vivo implantation of PE1 ABD.