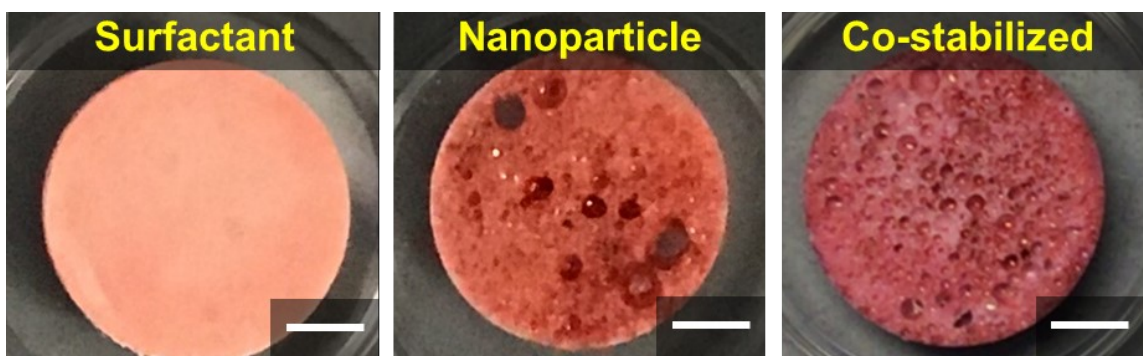


SUPPLEMENTAL INFORMATION



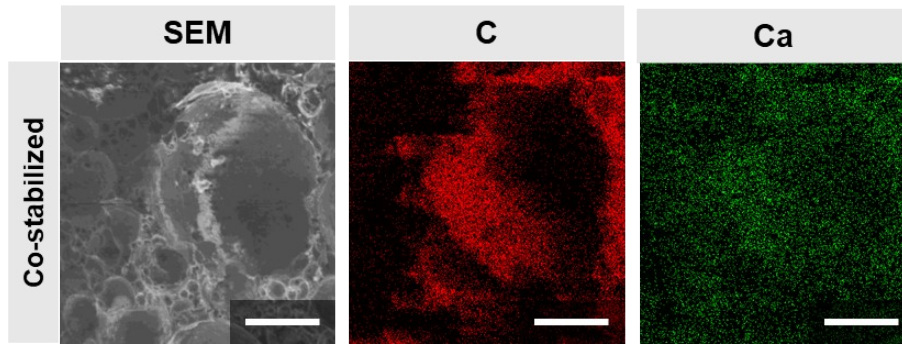
SI Figure 1. Image of custom emulsion mixer used to mix the aqueous phase into the organic phase of the emulsion.



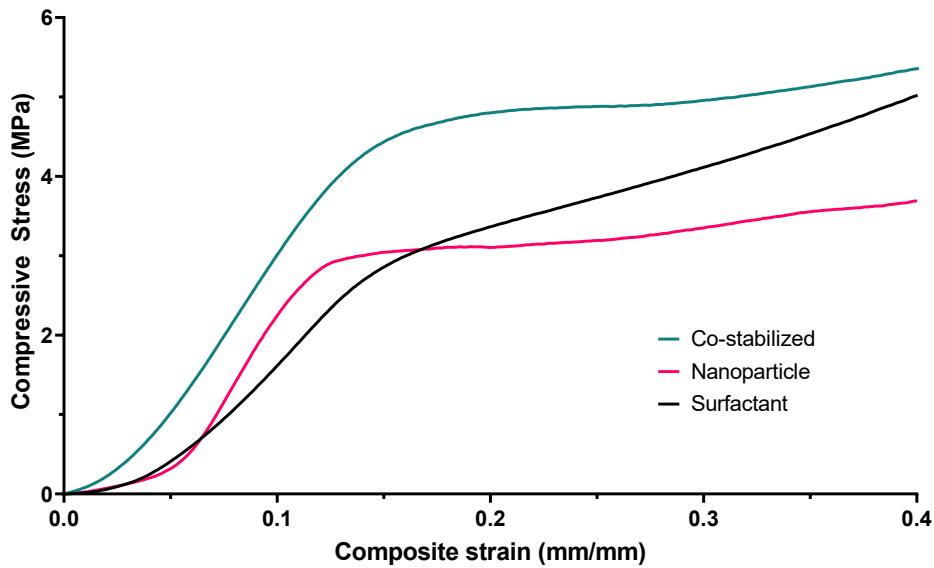
SI Figure 2: The presence of calcium is verified with Alizarin Red S. staining of nHA at the surface of the nHA-stabilized and co-stabilized porous scaffolds as compared to the negative control of the surfactant-stabilized porous scaffold. Scale bar = 2 mm.

SI Table 1: Gel fraction, compressive modulus, and compressive strength for surfactant-stabilized, nanoparticle-stabilized, and co-stabilized polyMIPEs.

	PGPR (n)	nHA (n)	Co-stabilized (n)
Gel Fraction (%)	96.6 ± 1.1 (8)	94.3 ± 1.7 (7)	97.5 ± 1.6 (9)
Compressive Modulus (MPa)	29.2 ± 6.4 (6)	44.9 ± 11.0 (5)	41.6 ± 6.4 (5)
Compressive Strength (MPa)	2.5 ± 0.4 (6)	3.9 ± 1.0 (5)	3.6 ± 0.5 (5)



SI Figure 3: Carbon and calcium mapping with EDS to demonstrate the presence of nanoparticles at the pore surface of co-stabilized polyMIPEs. Scale bars = 100 μ m.



SI Figure 4: Representative stress-strain curves of surfactant, nanoparticle, and co-stabilized polyMIPEs.