

## Electronic Supplementary Information

### **Engineered elastin-like polypeptide-based hydrogel delivering chemotherapeutics and PD-L1 antibodies for potentiated cancer immunotherapy**

Jinguang Chen,<sup>‡a</sup> Meiyong Cui,<sup>‡b</sup> Lianping He,<sup>‡c</sup> Yeteng Mu,<sup>c</sup> Nannan Hu,<sup>c</sup> Xingang  
Guan<sup>\*c</sup>

<sup>a</sup> Department of Dermatology, Taizhou Central Hospital (Taizhou University Hospital), Taizhou University, Taizhou 318001, PR China

<sup>b</sup> Department of Clinical Laboratory, Affiliated Hospital of Jining Medical College, Jining 272007, China

<sup>c</sup> Department of Basic Medical Science, Medical School, Taizhou University, Taizhou 318001, PR China

<sup>‡</sup> These authors contributed to this work equally.

Corresponding author: [guanxg@ciac.ac.cn](mailto:guanxg@ciac.ac.cn) (Guan X)

Supplementary Figures

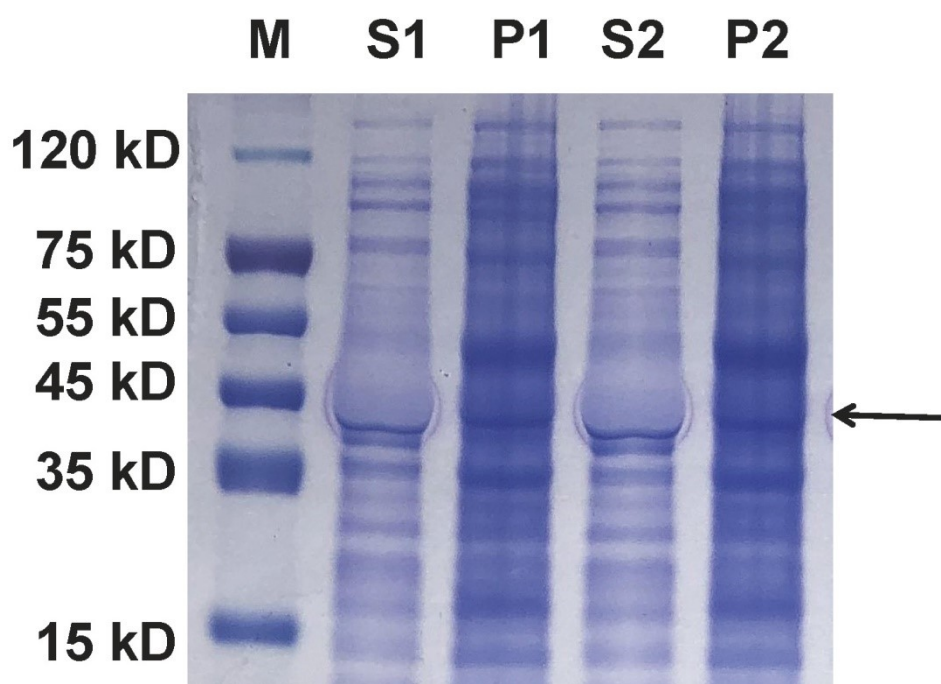


Figure S1. SDS-PAGE analysis of RGD-ELP production in BL21 *E. coli* cells.

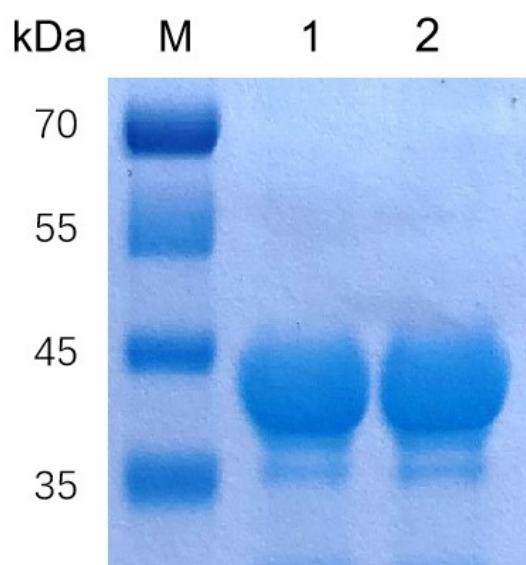


Figure S2. SDS-PAGE analysis of purified RGD-ELP proteins via ITC method.

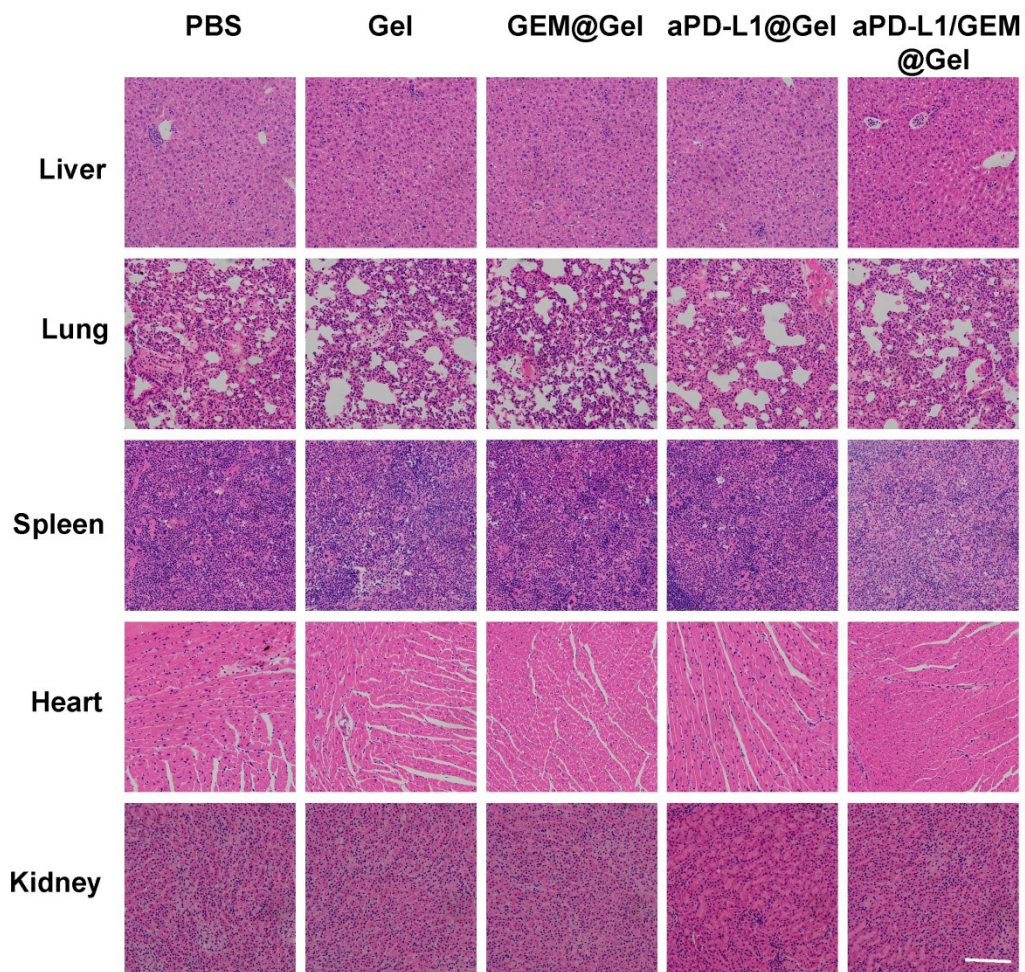


Figure S3. H&E staining of main organs (liver, lung, spleen, heart, and kidney) from mice treated with PBS, Gel, GEM@Gel, aPD-L1 @Gel, and aPD-L1/GEM@Gel. Scale bar: 100  $\mu$ m.

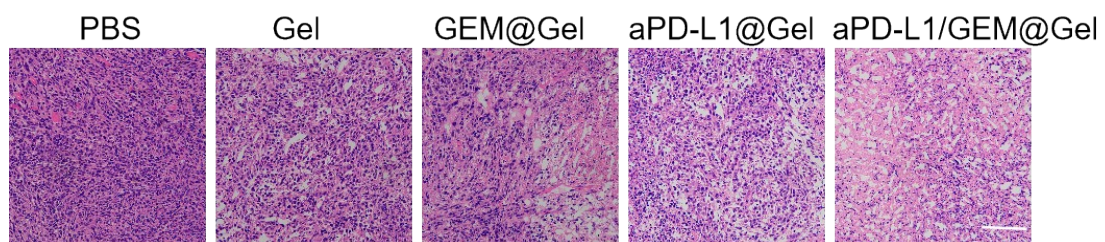


Figure S4. H&E staining of tumor tissues from the mice treated with PBS, Gel, GEM@Gel, aPD-L1@Gel, and aPD-L1/GEM@Gel. Scale bar: 100  $\mu$ m.