

Fig. S1. Determination of MIC of CDs in pathogenic bacteria. Images show a continuous decrease in OD_{600nm} with increase in CD concentration in (a) *Staphylococcus epidermidis* (ATCC 14990), *Enterobacter cloacae* (MTCC 509), *Escherichia coli* DH5 α and *Pseudomonas aeruginosa*. The minimum concentration of CDs at which no bacterial growth (clear solution of culture) was observed determined the MIC.

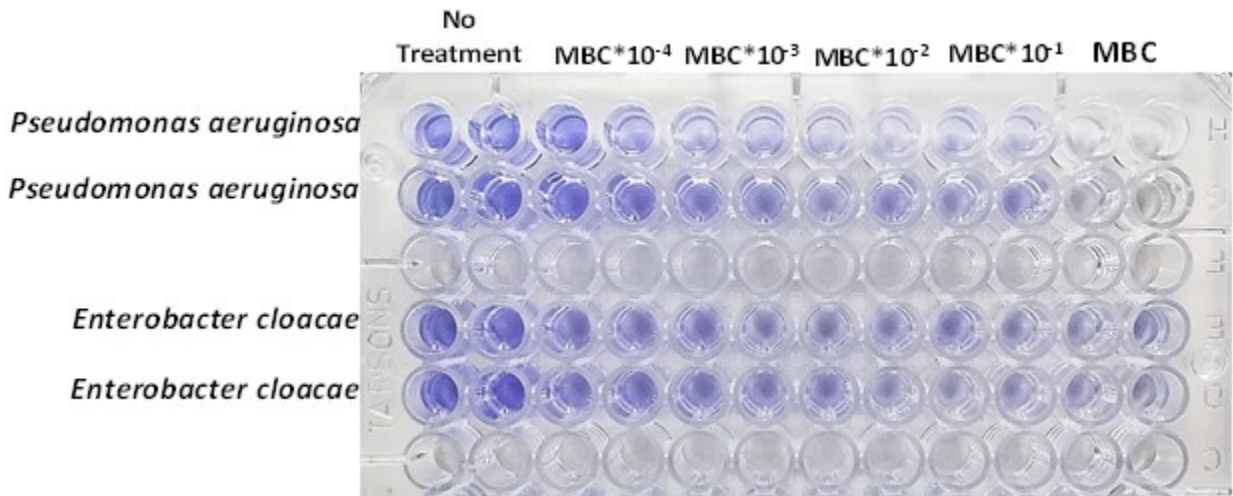


Fig. S2. Absorbance-based biofilm inhibition assay in *P. aeruginosa* and *E. cloacae*. Image of a 96-well flat bottom microtiter plate shows a decrease in crystal violet color intensity compared to the untreated sample, indicating biofilm inhibition, in the wells containing CD treatment at the doses of MBC and its ten-fold serial dilution.

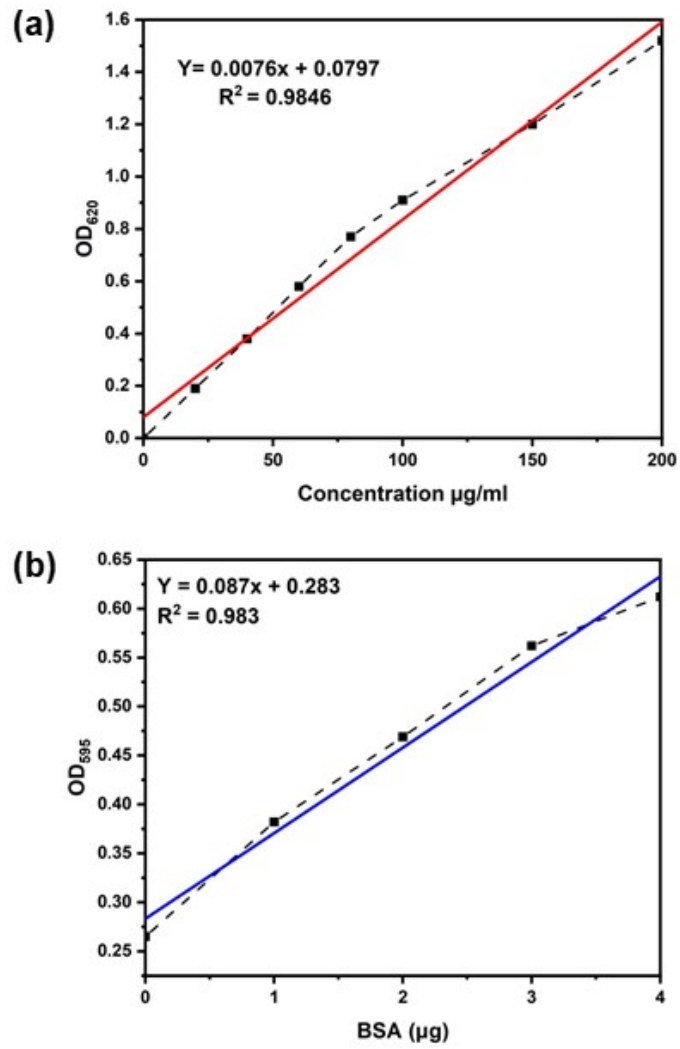


Fig. S3. (a) Glucose standard curve for carbohydrate content estimation. (b) Protein (BSA) standard curve for protein estimation