

A Highly Biocompatible CE-Crosslinked Collagen Implant with Exceptional Anti-Calcification and Collagen Regeneration Capabilities for Aging Skin Rejuvenation

Qi Wang^{a,b, #}, Huiyu Yan^{a,b, #}, Linyan Yao^{a,b}, Wenhua Li^{a,b} and Jianxi Xiao^{a,b*}

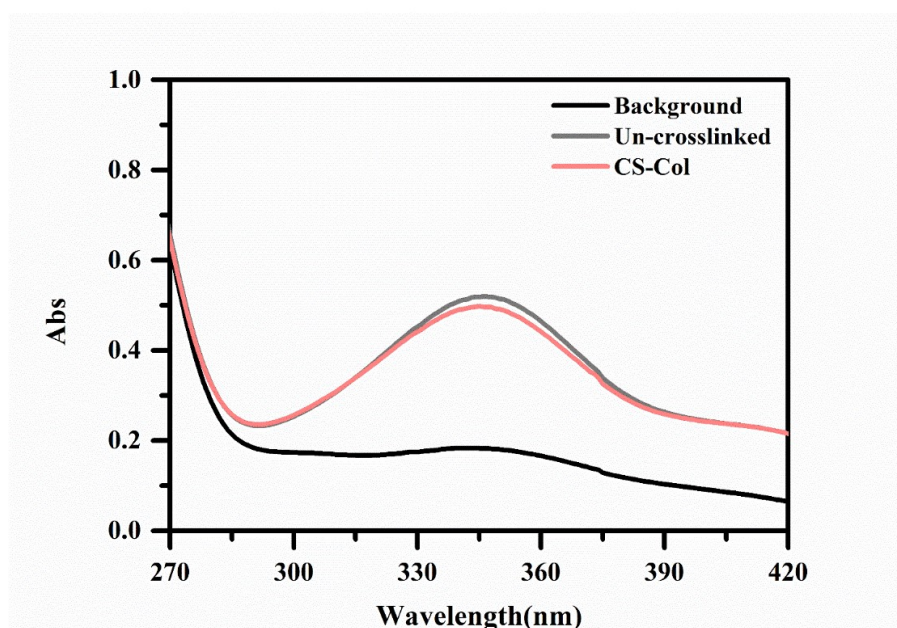


Fig. S1 The determination curve of the degree of crosslinking between chondroitin sulfate (CS) and collagen.

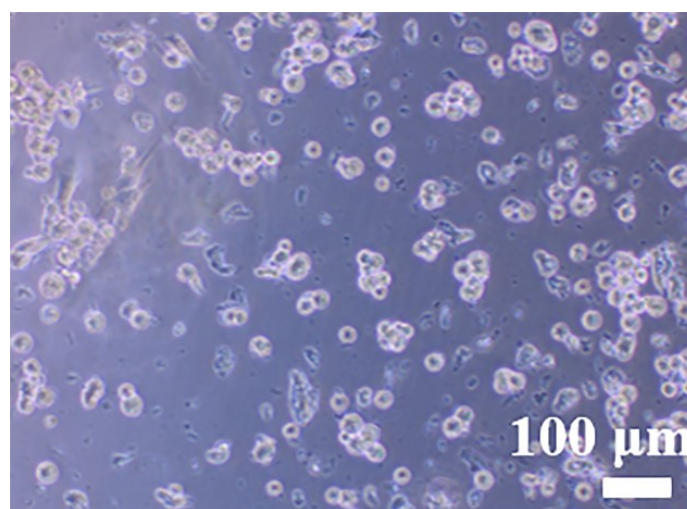


Fig. S2 The Cellular adhesion of PBS.

Table S1 The hemocompatibility of CE-crosslinked collagen implant

Material	Number	Hemolysis rate (%)	Mean hemolysis rate (%)
0.9%Saline	1	0	0
	2	0	
	3	0	
Col	1	1.05	1.08
	2	1.10	
	3	1.10	
Col-CE	1	1.50	1.45
	2	1.41	
	3	1.45	