

Supporting Information

A hierarchical metafabric with dynamically thermochromic property for subambient daytime radiative cooling

Rong Zhang,^{1,2} Renzhi Li,¹ Peng Xu,¹ Bo Xiang^{1*}

¹ College of Science, Nanjing Forestry University, Nanjing 210037, P. R. China.

² College of Engineering and Applied Sciences, Nanjing University, Nanjing 210093,
P. R. China

*Corresponding author. Email: xiangbo@njfu.edu.cn

This file includes:

Table S1 Optical properties of samples in this work.

Fig. S1 FT-IR spectra of TRM_{GN}, PA6/SiO₂, PA6.

Fig. S2 SEM of TRM.

Fig. S3 The reflectivity (a) and transmittance (b) of PA6 and TRM across 2.5-15 μm.

Fig. S4 Strain-stress curve of the dual-mode fiber membrane.

Fig. S5 Photograph of the setup for the sunlight radiation test.

Table S1 Optical properties of samples in this work.

Optical properties	TRM	TRM _{RD}	TRM _{GN}
$R_{lum,20\text{ }^{\circ}\text{C}}$ (%)	96.28	49.88	36.06
$R_{lum,40\text{ }^{\circ}\text{C}}$ (%)	96.99	90.01	88.70
ΔR_{lum} (%)	0.71	40.13	52.64
$R_{sol,20\text{ }^{\circ}\text{C}}$ (%)	93.07	63.42	55.95
$R_{sol,40\text{ }^{\circ}\text{C}}$ (%)	94.11	88.06	87.66
ΔR_{sol} (%)	1.04	24.64	31.71

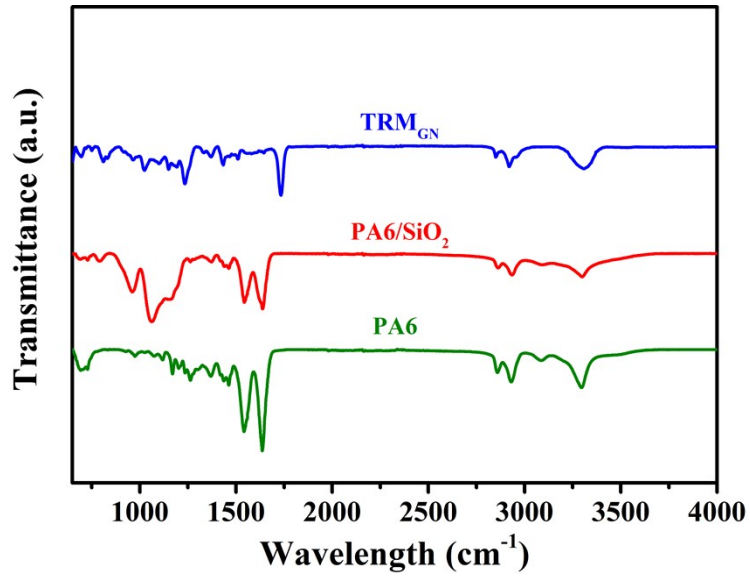


Fig. S1 FT-IR spectra of TRM_{GN}, PA6/SiO₂, PA6.

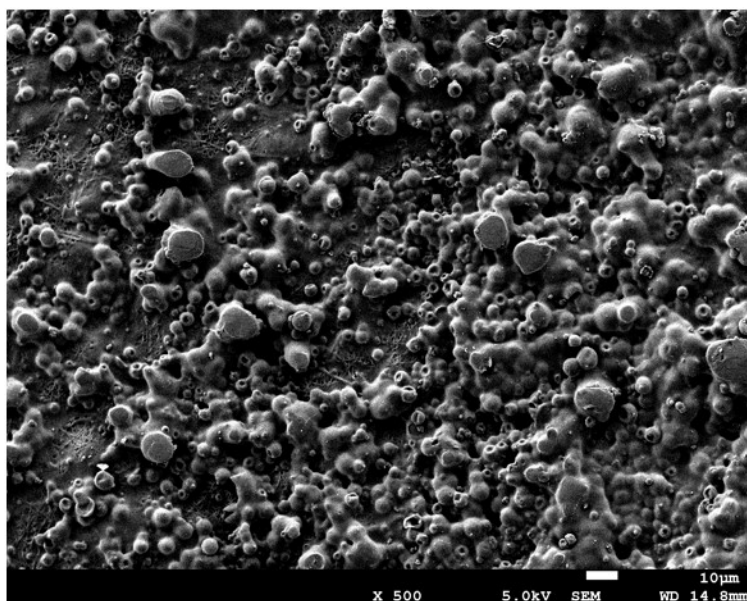


Fig. S2 SEM of TRM.

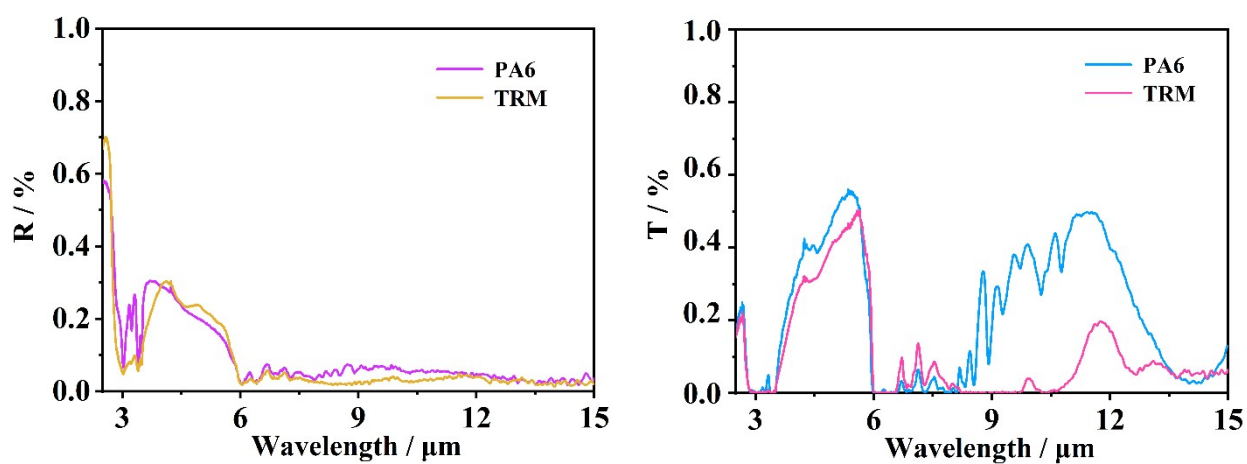


Fig. S3 The reflectivity (a) and transmittance (b) of PA6 and TRM across 2.5-15 µm.

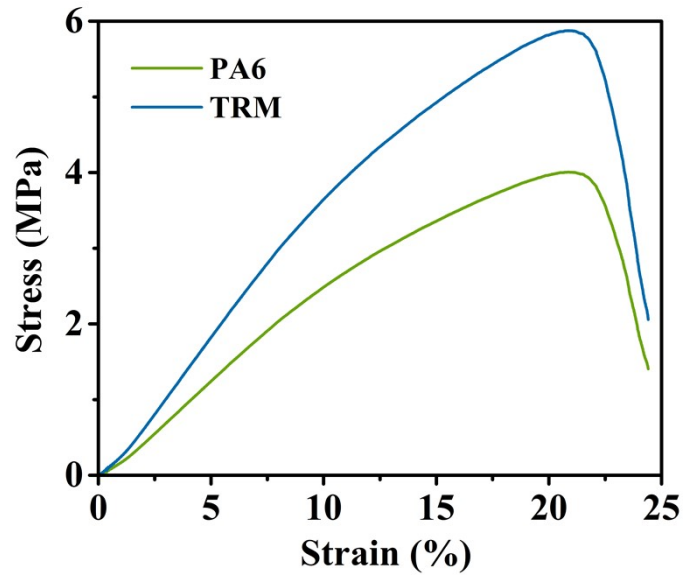


Fig. S4 Strain-stress curve of the dual-mode fiber membrane.



Fig. S5 Photograph of the setup for the sunlight radiation test.