

Microplastic Distribution and Ecological Risks: Investigating Road Dust and Stormwater Runoff Across Land Uses

S. M. Alamgir Kabir^a, Muhammed A Bhuiyan^a, Guomin Zhang^a, Biplob Kumar Pramanik^{a*},

^a *School of Engineering, RMIT University, GPO Box 2476, Melbourne VIC 3001, Australia*

**Corresponding Author: biplob.pramanik@rmit.edu.au RMIT University, School of Engineering, 124 La Trobe St, VIC 3000, Australia 3001, Tel: +61 3 9925 9419; Fax: +61 3 9639 0138*

Table S1. Road dust sample locations in industrial, commercial, and residential land uses.

SI	Industrial zone	SI	Residential zone	SI	Commercial zone
1	Huntingdale Rd,	11	Clayton Rd, Clayton	21	Blackburn Rd,
2	Ferntree Gully Rd, Ferntree	12	Cooke St, Clayton	22	Carinish Rd, Oakleigh
3	Forster Rd, Mount	13	Pinadle Ave, Woolamai	23	Springs Rd, Clayton
4	Grieve Pde, Altona North	14	Browns Rd,	24	Rayhur St, Clayton
5	Heidelberg Rd, Northcote	15	Rowe St, Alphington	25	Cheltenham Rd,
6	Ballarat Rd, Deer Park	16	Lonsdale St, East	26	Middleborough Rd,
7	Queen St, North Melbourne	17	Fulton Rd, Blackburn	27	Farnsworth Ave,
8	Butler Rd, Altona North	18	Heaths Rd, Hoppers	28	Moore St, Southbank
9	Aberdeen Rd, Prahran	19	Copeton Ave, Tarneit	29	Manning Cct, Tarneit
10	Dohertys Rd, Laverton	20	College Rd, Werribee	30	Burns Rd, Altona

Table S2. Stormwater sample locations in wetlands of industrial, commercial, and residential land uses.

SI	Industrial zone	SI	Residential zone	SI	Commercial zone
1	Huntingdale Wetland,	6	Namatjira Reserve,	11	Keeley Park, Clayton
2	Mulgrave Reserve,	7	Talbot Park, Oakleigh	12	Alphington Wetlands,
3	Yarra River, <i>Central</i>	8	Holmesglen Reserve,	13	Gardiners Creek, Box
4	Maribyrnong River,	9	Wilson Reserve, Ivanhoe	14	Edgewater Wetland,
5	Frogs Hollow Wetland,	10	Wurundjeri Wetland,	15	Lysterfiled Lake,



Figure S1. The map indicates the locations in Melbourne, Australia, where the road dust and stormwater samples were collected for various land uses, such as industrial, commercial, and residential.

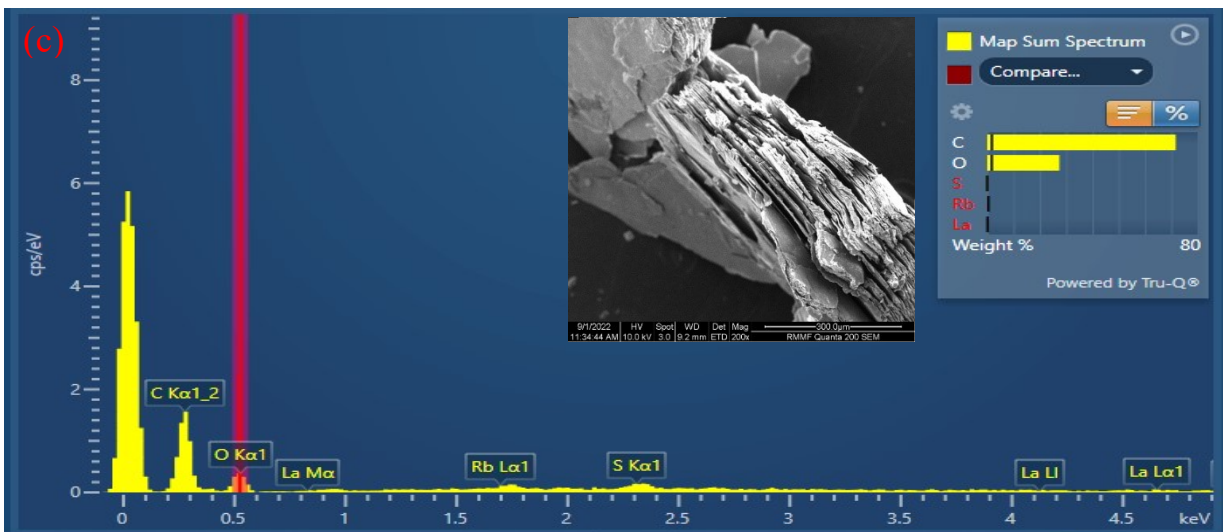
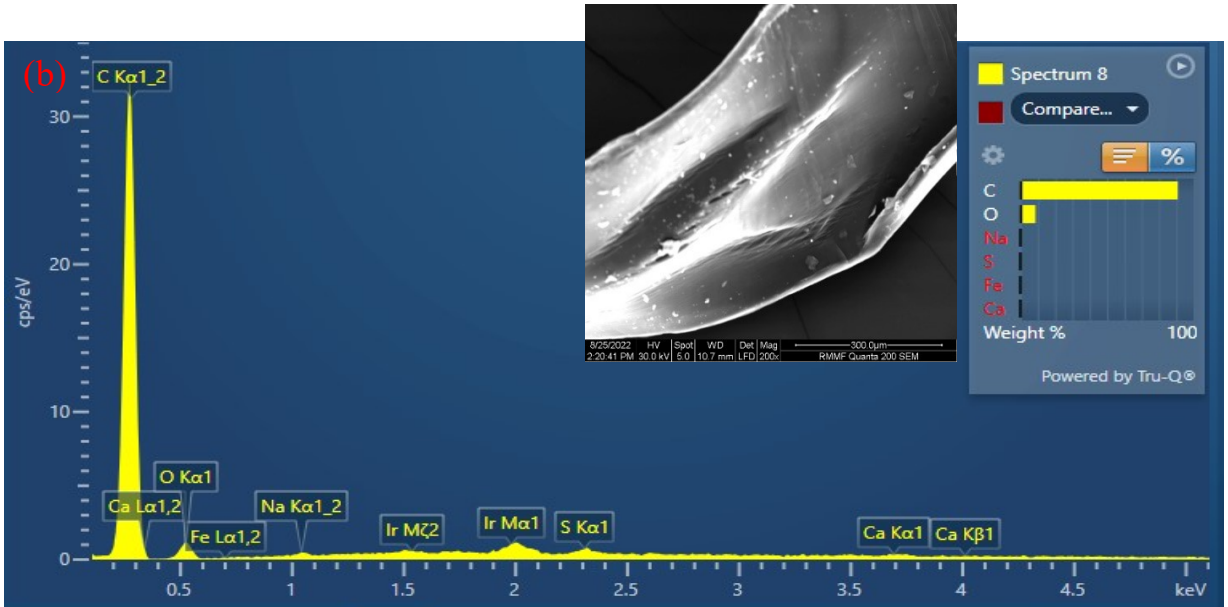
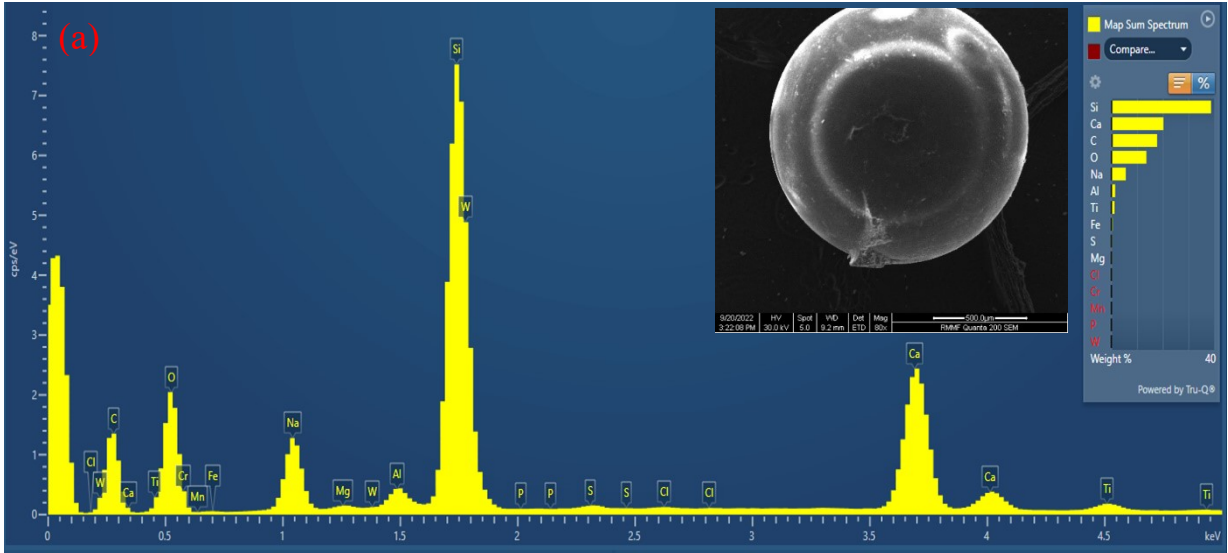


Figure S2. SEM images and their corresponding EDX spectra show the elemental composition of representative MPs (a) microbead, (b) fiber, and (c) film in road dust samples.

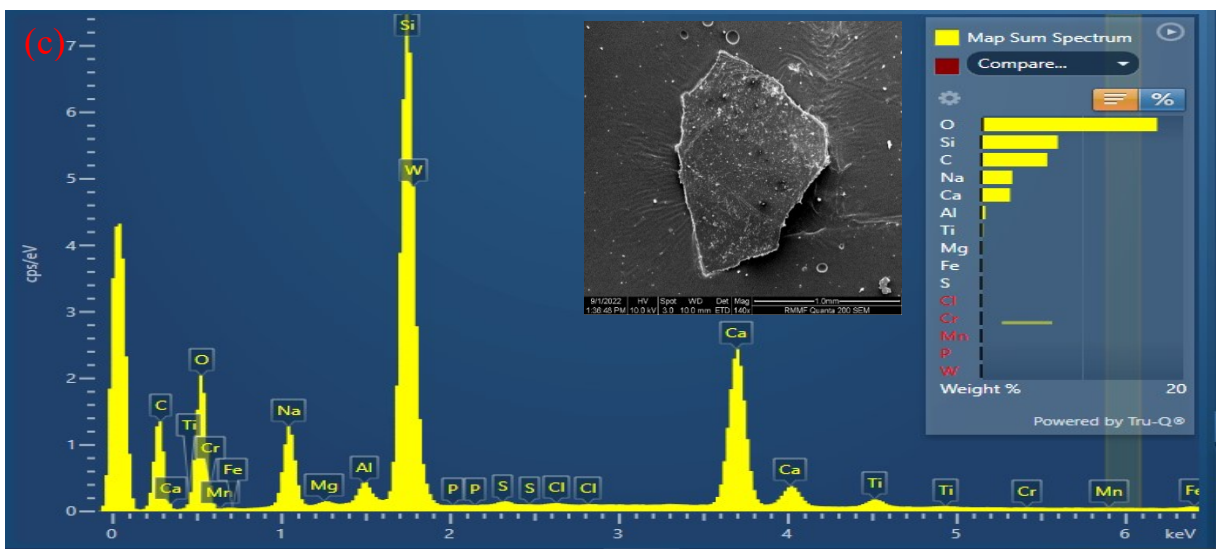
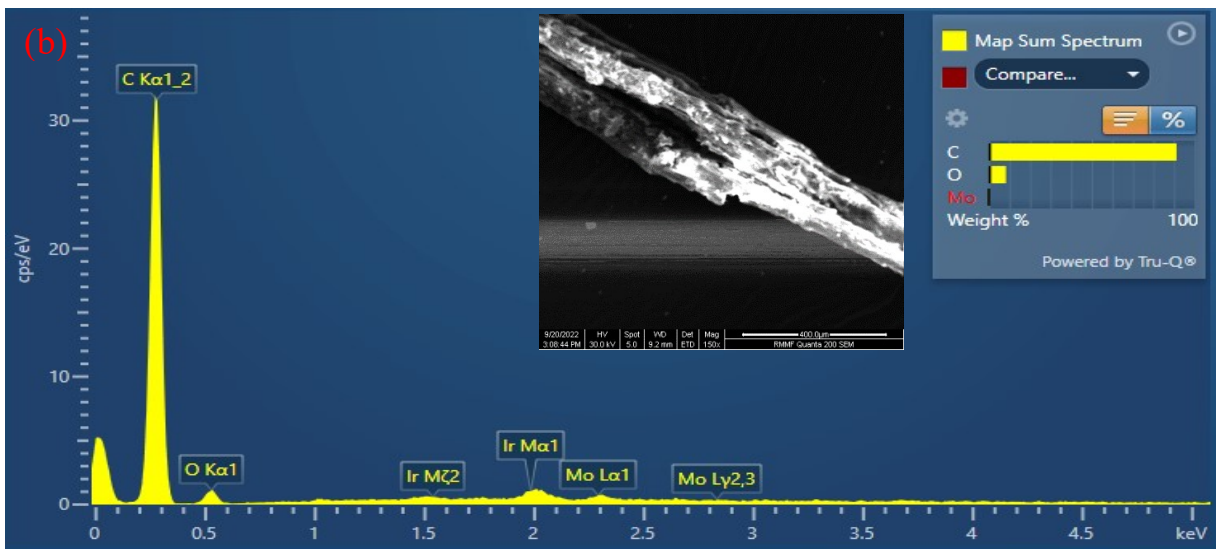
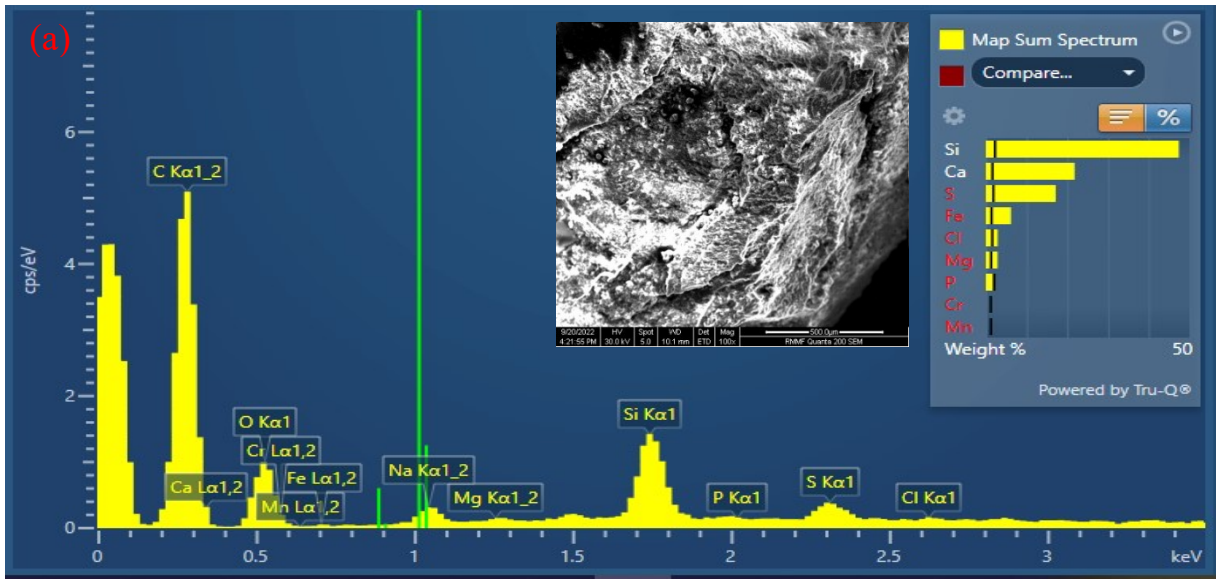


Figure S3. SEM images and their corresponding EDX spectra show the elemental composition of representative MPs on the (a) fragment, (b) fiber, and (c) film in stormwater runoff.

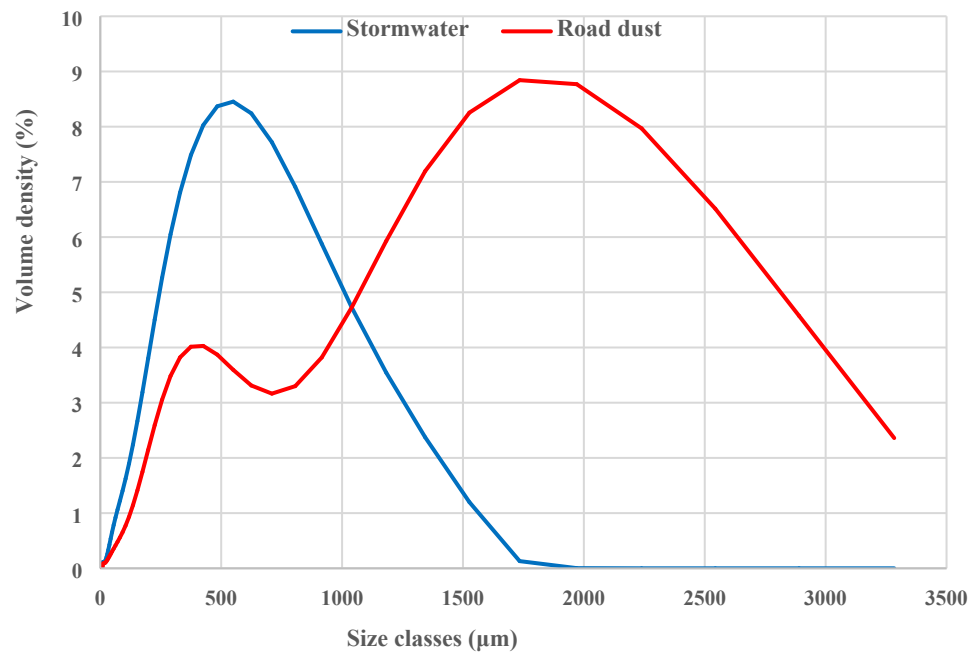


Figure S4. Particle size analysis of MPs identified in road dust and stormwater samples.