

Determination of 3-Acetyl-11-keto- β -boswellic acid in analytical and biological samples using streamlined and robust RP-HPLC method

Supplementary information:

Table 1S Details of Calibration curve

Concentration (ng/mL)	Peak Area (Mean \pm SD) n=3	% RSD
250	6838 \pm 129.25	1.89
1000	28745 \pm 311.89	1.08
2000	57517 \pm 463.24	0.80
5000	143082 \pm 483.75	0.33
10000	286730 \pm 3572.33	1.24
20000	569143 \pm 6761.27	1.18

SD: Standard deviation; RSD: Relative standard deviation

Chromatogram of quality control samples:

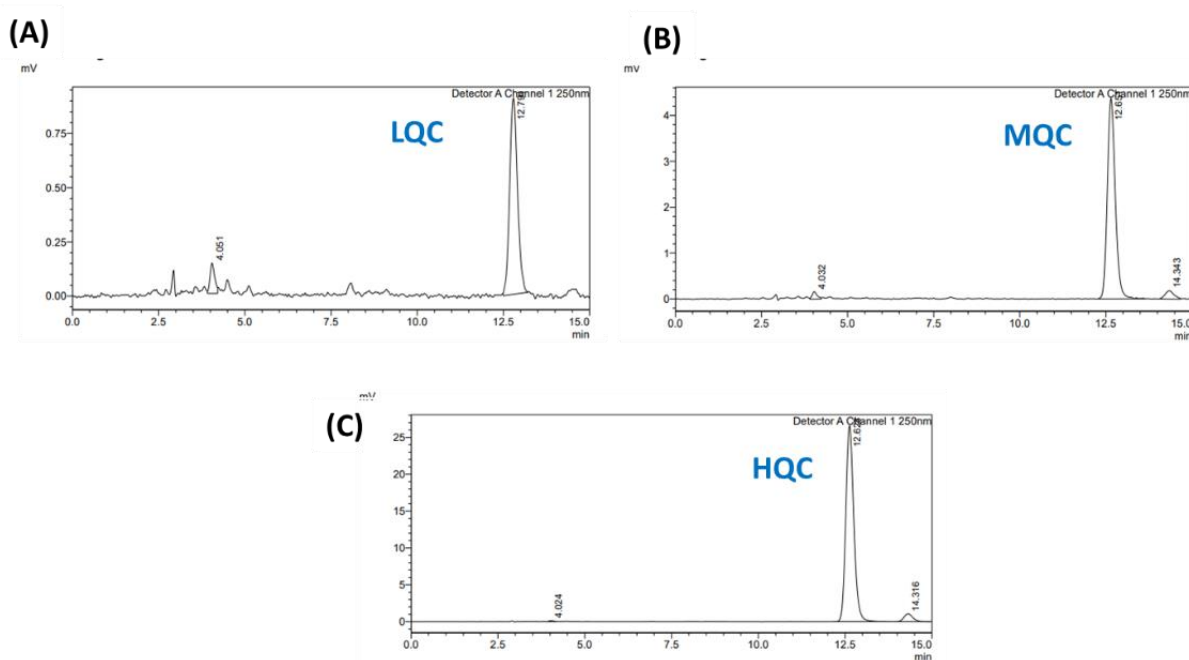


Fig. 1S Representative chromatogram of (A) Lower quality control samples (500 ng/mL), (B) Medium quality control samples (2500 ng/mL), (C) High-quality control samples (15000 ng/mL).