

**Escaping Site from Endo-lysosomal Trafficking Route Manipulates Exocytosis of Nanoparticles in Polar Epithelium**

Key Laboratory of Drug Targeting and Drug Delivery System, Ministry of Education,  
West China School of Pharmacy, Sichuan University. No. 17, Block 3, Southern  
Renmin Road, Chengdu 610041, P.R. China

Corresponding Author

Yuan Huang

\*E-mail: [huangyuan0@163.com](mailto:huangyuan0@163.com),

Tel.: +86-28-85501617

Fax: +86-28-85501617

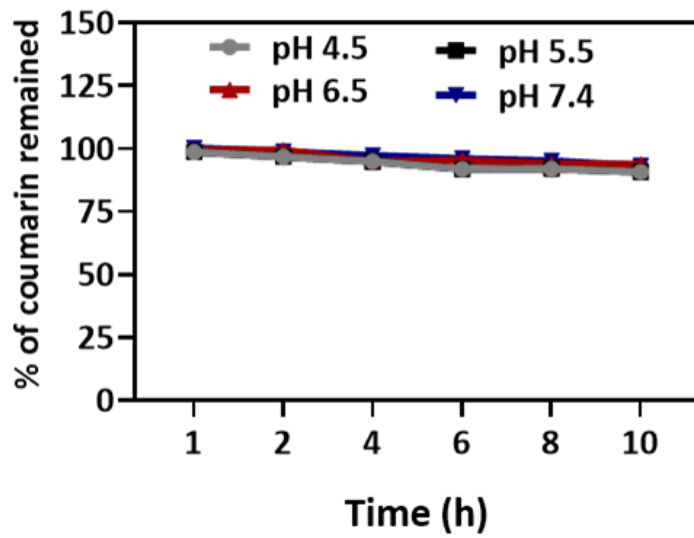


Figure S1 The release profile of C6 from C6 MNPs in pH 4.5, 5.5, 6.5 medium. Error bars represent SD (n=3).

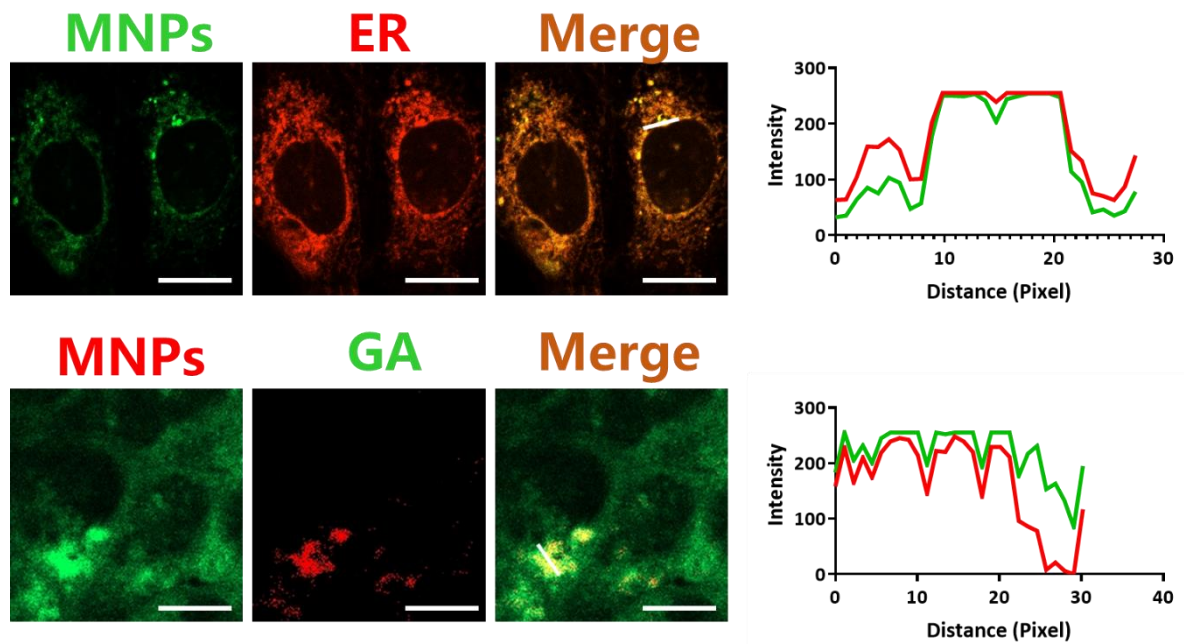


Figure S2 Colocalization of re-taken MNPs with ER and GA in Early. Scale bar: 20  $\mu\text{m}$ .

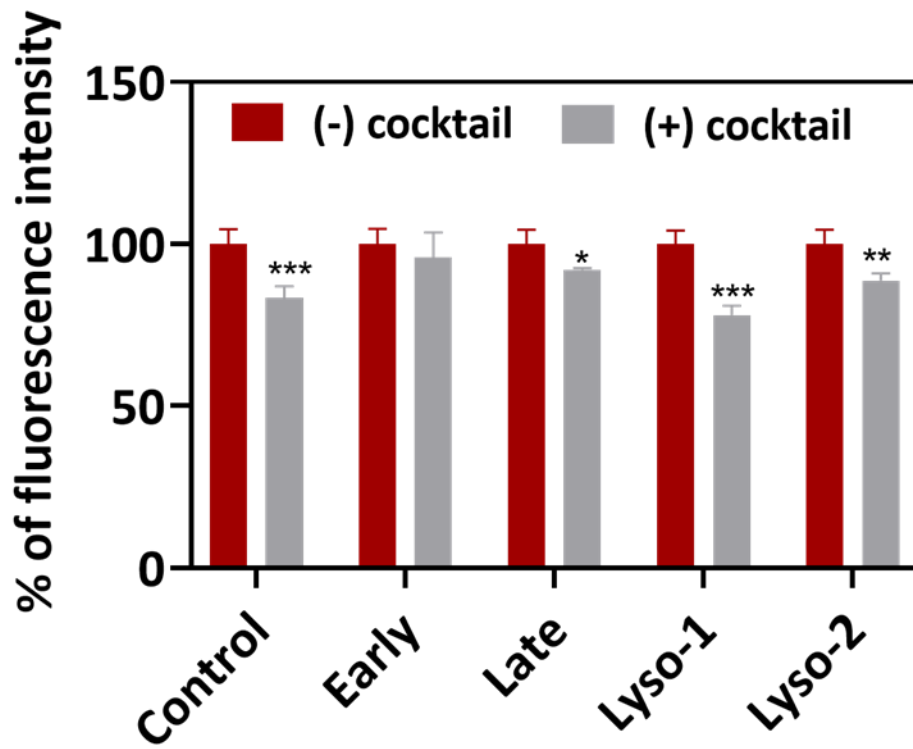


Figure S3 he cellular retention of MNPs when pre-incubation with cocktail. \* $p < 0.05$ , \*\* $p < 0.01$ , \*\*\* $p < 0.001$  versus (-) cocktail. Error bars represent SD (n=3).

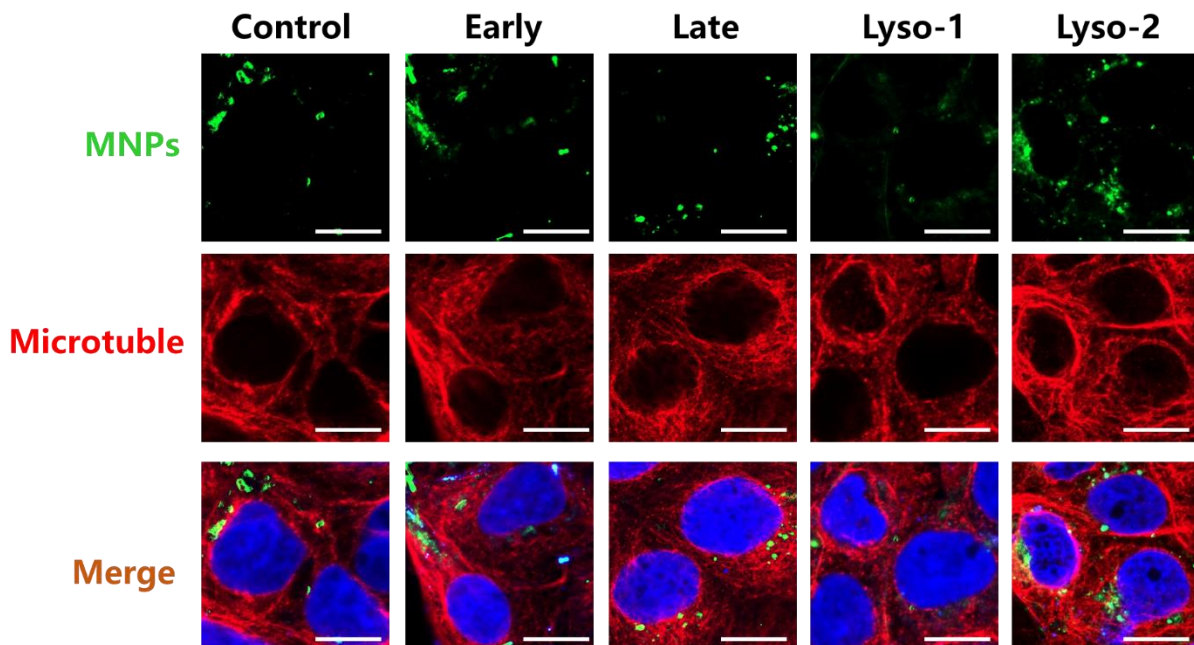


Figure S4 Colocalization of MNPs with microtubule in Control, Early, Late, Lyso-1, Lyso-2 group. Scale bar: 20  $\mu\text{m}$ .

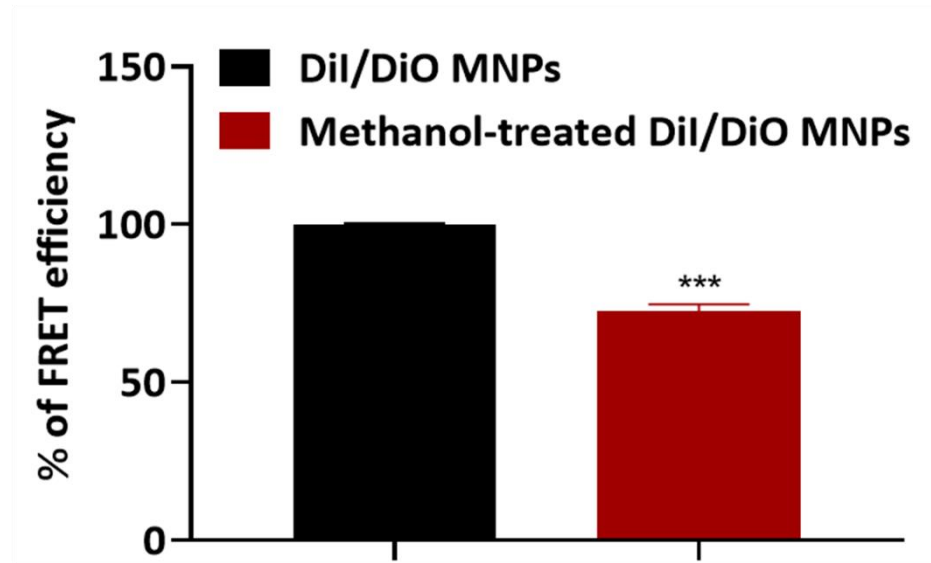
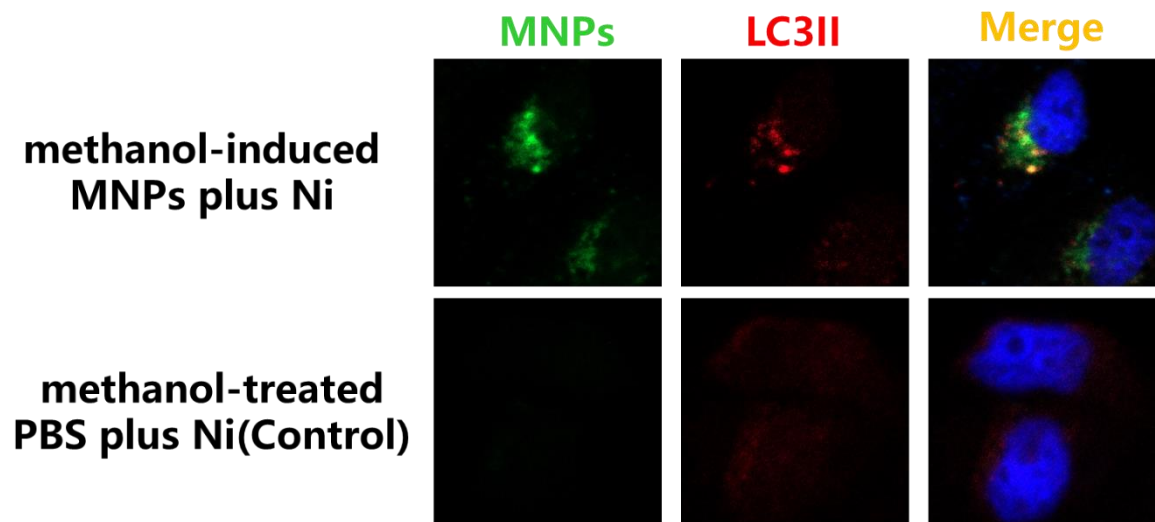
**A****B**

Figure S5 (A) FRET efficiency variation of DiI/DiO MNPs after methanol treatment. \*\*\* $p < 0.001$ , versus DiI/DiO MNPs. Error bars represent SD (n=3). (B) Colocalization of MNPs with LC3II in different groups. Scale bar: 20  $\mu\text{m}$ .