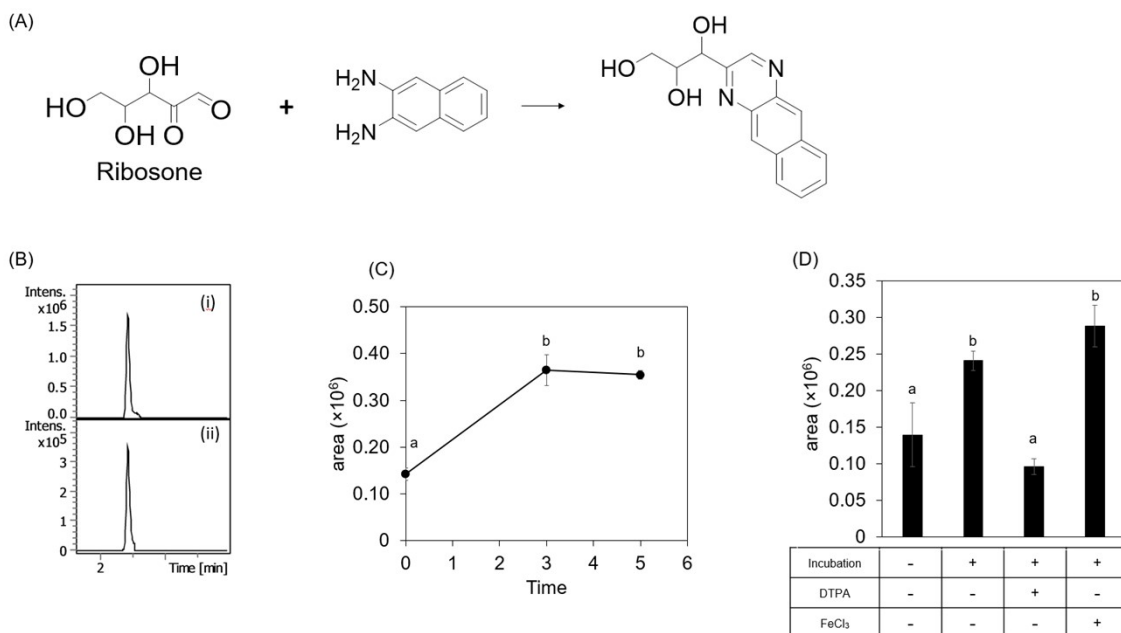


Electronic Supplementary Information (ESI)



**Supplemental Fig.1: Ribosone formation from ribose.** (A) The predicted structure of the derivatized ribosone. Ribosone formation was evaluated by LC-ESI-QTOF. (B) MS chromatograms indicating ribosone in (i) ribose solution ( $m/z$  271.1077  $\pm$  0.01), and ribosone in (ii)  $^{13}\text{C}_1$  ribose solution ( $m/z$  273.1218  $\pm$  0.01). (C) Time-course of ribosone formation in ribose solution. (D) Ribosone formation from ribose incubated with/without DTPA or  $\text{FeCl}_3$ , followed by LC-ESI-QTOF analysis. Different superscripts indicate statistically significant differences between groups ( $p < 0.01$ ). All data are presented as the mean  $\pm$  S.D. ( $n = 3$ ).