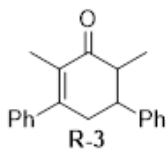


$^1\text{H}$  NMR (400 MHz,  $\text{CDCl}_3$ )

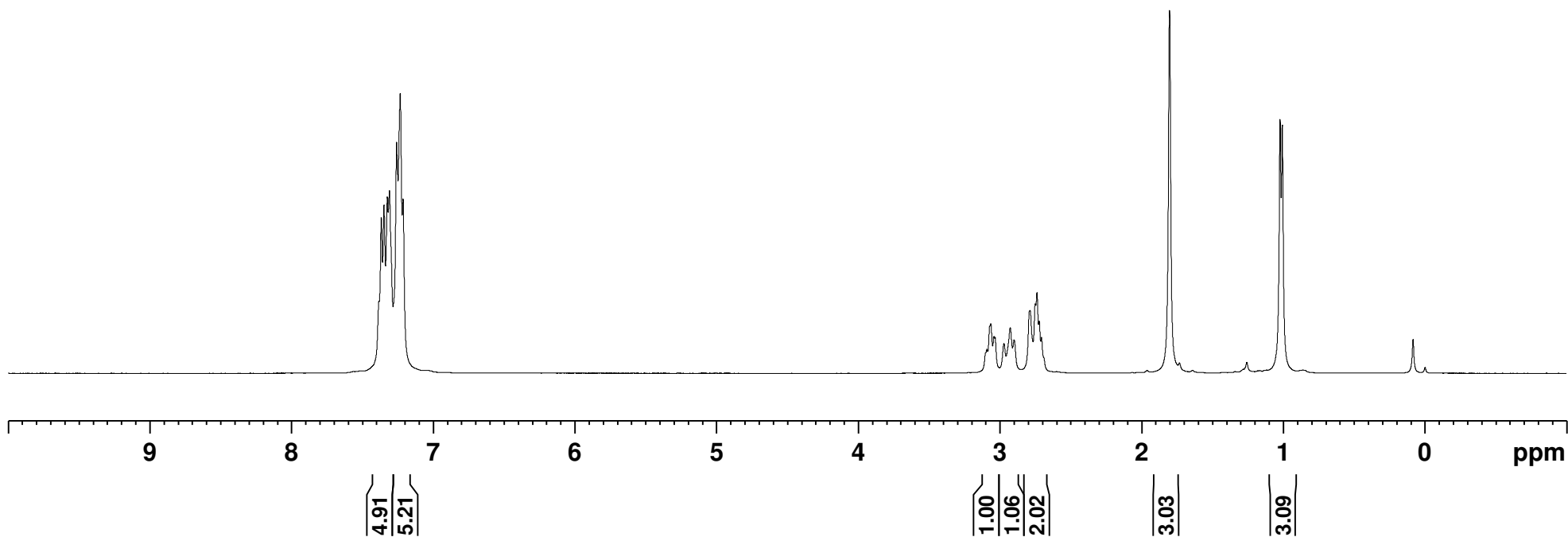


7.384  
7.368  
7.348  
7.325  
7.309  
7.259  
7.234  
7.214

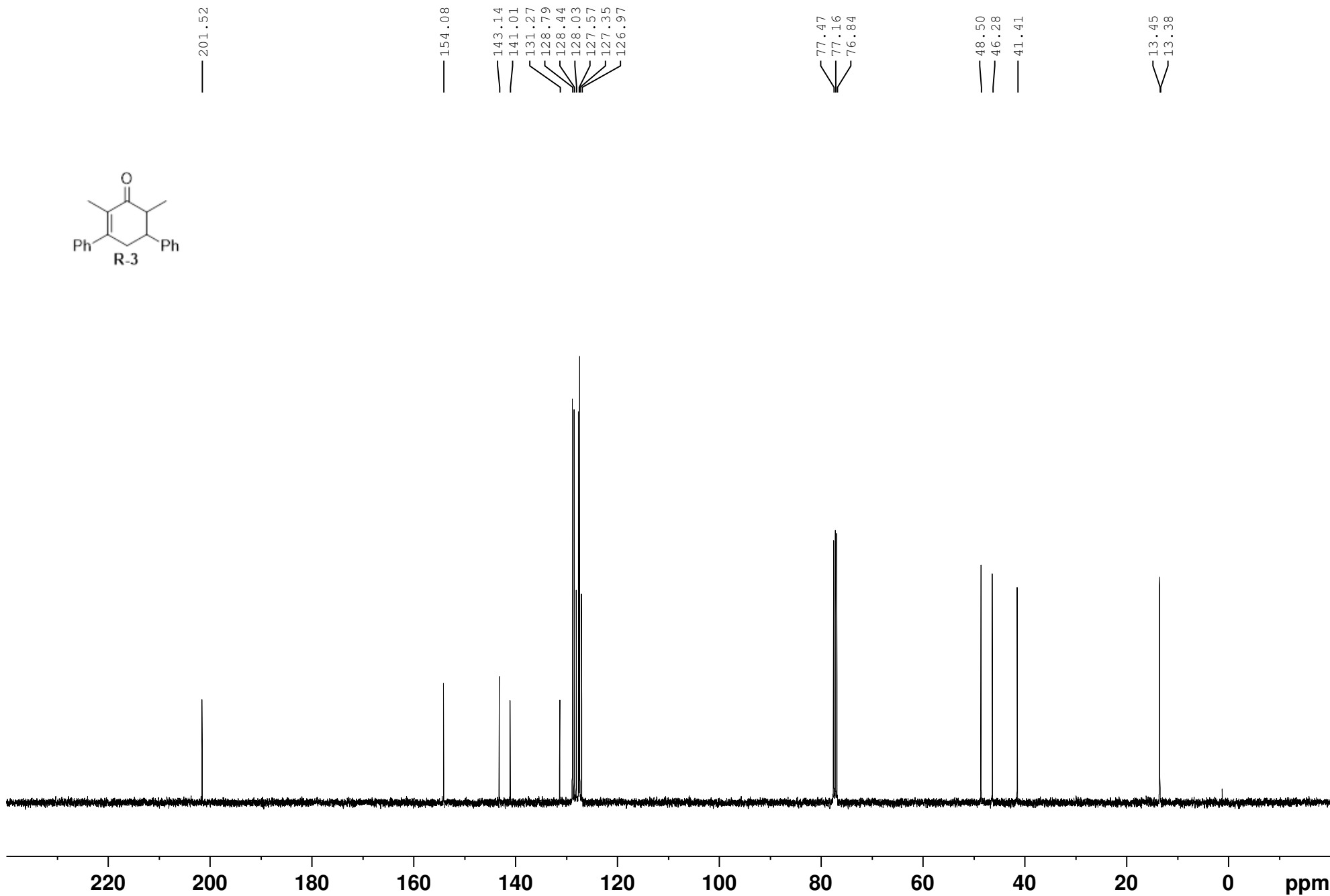
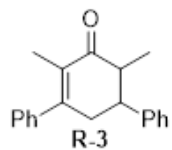
3.092  
3.065  
3.043  
3.035  
2.973  
2.928  
2.901  
2.789  
2.752  
2.739  
2.723  
2.707  
1.803

1.023  
1.007

0.084  
-0.000

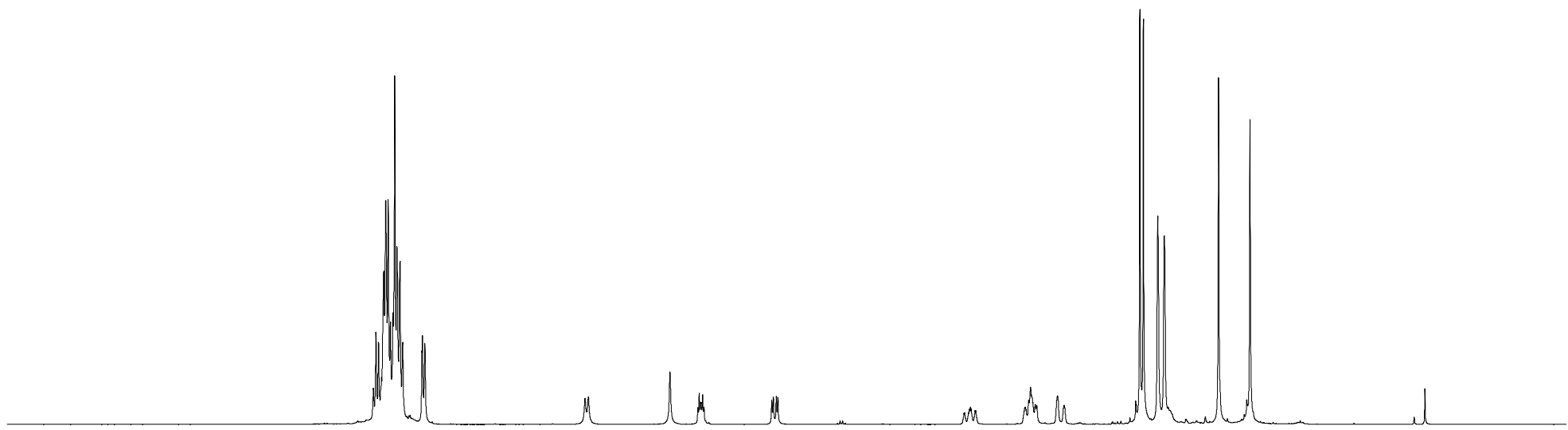
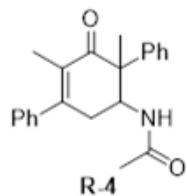


<sup>13</sup>C NMR (100 MHz, CDCl<sub>3</sub>)



$^1\text{H}$  NMR (400 MHz,  $\text{CDCl}_3$ )

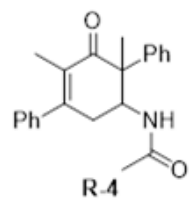
7.414  
7.397  
7.378  
7.363  
7.358  
7.341  
7.327  
7.311  
7.294  
7.276  
7.264  
7.249  
7.227  
7.208  
7.072  
7.069  
7.052  
5.922  
5.899  
5.323  
5.126  
5.117  
5.107  
5.103  
5.093  
5.084  
4.606  
4.594  
4.574  
4.563  
3.251  
3.245  
3.219  
3.212  
3.205  
3.199  
3.172  
3.167  
2.827  
2.821  
2.817  
2.811  
2.793  
2.781  
2.774  
2.770  
2.764  
2.747  
2.738  
2.594  
2.590  
2.546  
2.542  
2.010  
1.985  
1.883  
1.838  
1.836  
1.455  
1.233  
-0.000



9 8 7 6 5 4 3 2 1 0 ppm

2.27  
18.24  
2.04  
1.01  
0.95  
1.02  
0.95  
0.97  
2.01  
1.01  
2.91  
3.10  
3.04  
3.10  
3.00  
2.87

$^{13}\text{C}$  NMR (100 MHz,  $\text{CDCl}_3$ )



202.13  
197.67

170.22  
169.62

154.11  
151.68  
142.41  
140.94  
140.08  
139.28  
131.85  
130.54  
129.28  
128.79  
128.50  
128.42  
128.23  
128.17  
127.40  
127.26  
126.30

77.47  
77.16  
76.84

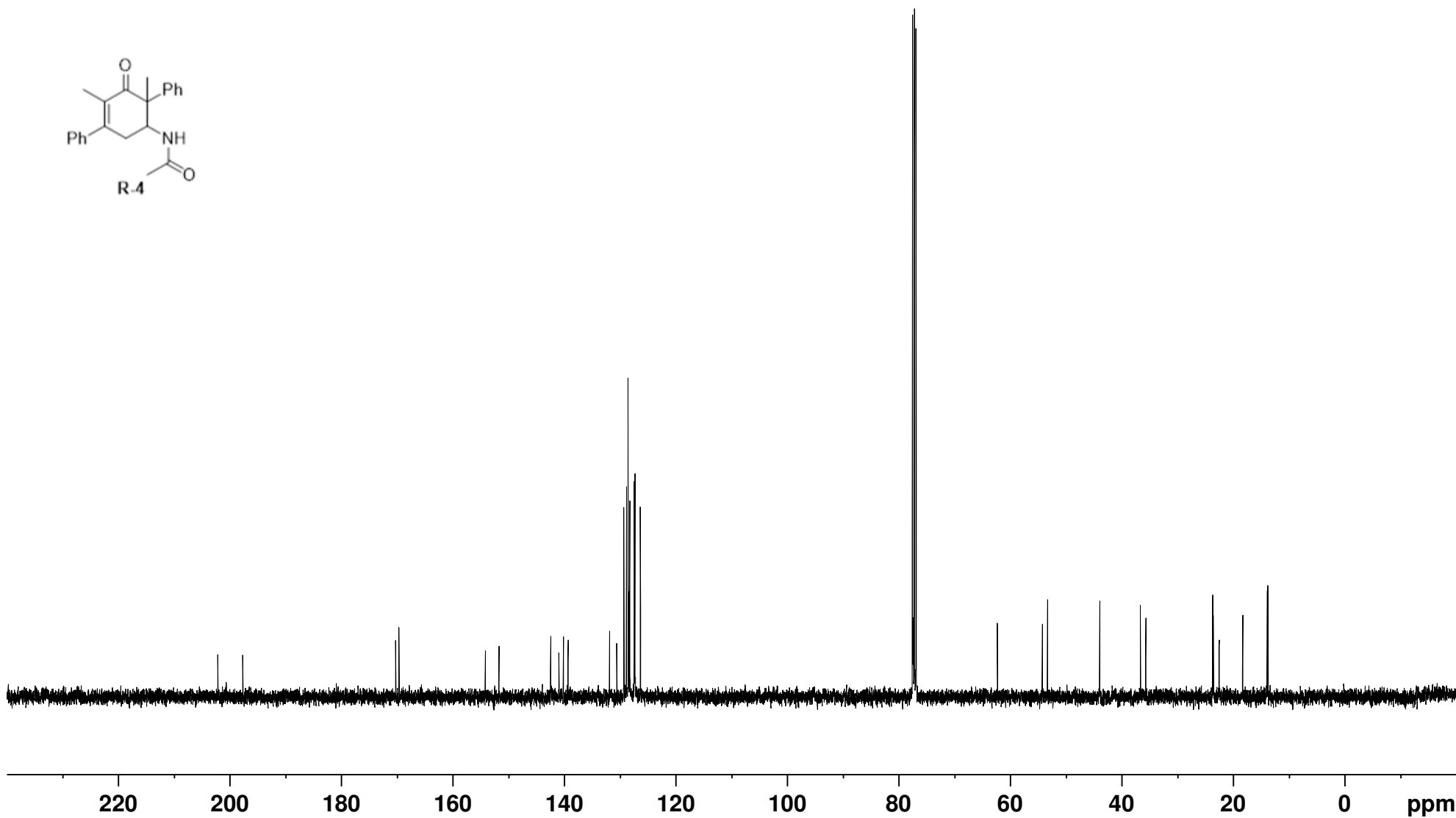
62.24

54.16  
53.23

43.88

36.58  
35.62

23.61  
23.50  
22.46  
18.23  
13.82  
13.69



$^1\text{H}$  NMR (400 MHz,  $\text{CDCl}_3$ )

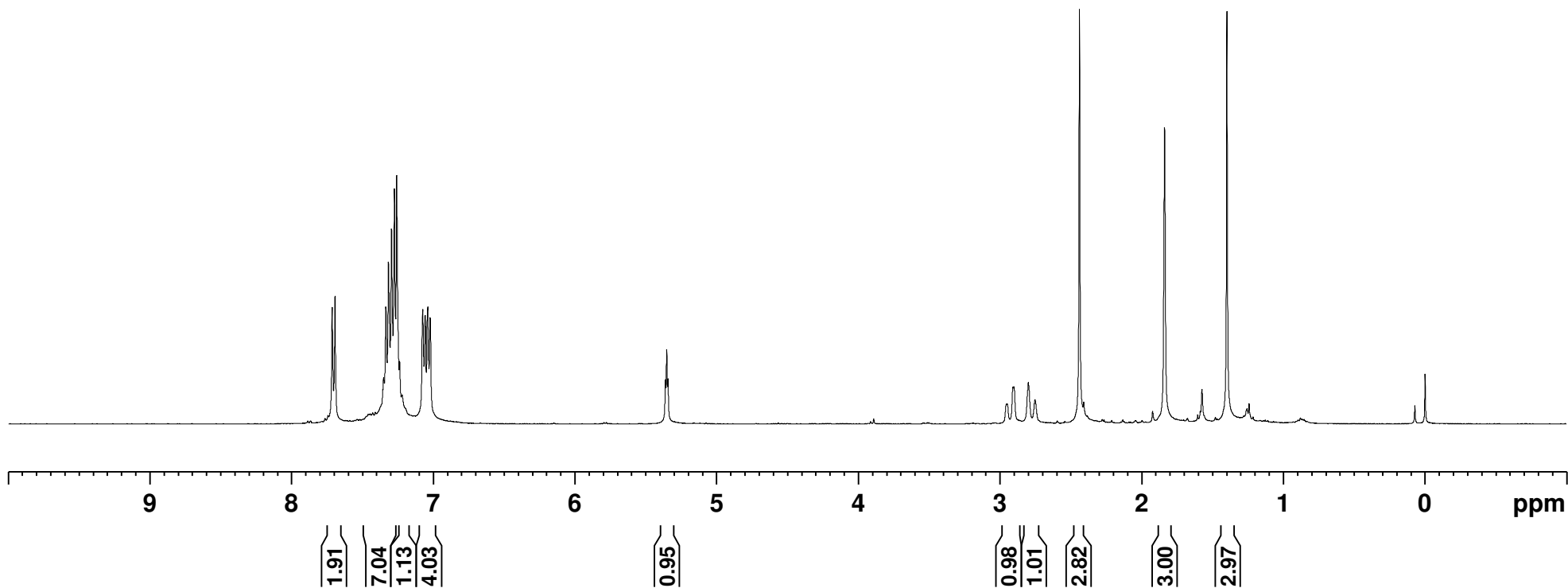
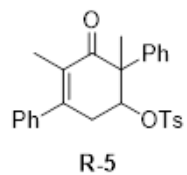
7.714  
7.693  
7.473  
7.461  
7.453  
7.445  
7.428  
7.408  
7.357  
7.351  
7.335  
7.317  
7.295  
7.275  
7.259  
7.238  
7.222  
7.219  
7.074  
7.058  
7.042  
7.039  
7.023  
5.362  
5.353  
5.344

2.956  
2.950  
2.908  
2.902  
2.800  
2.752  
2.439

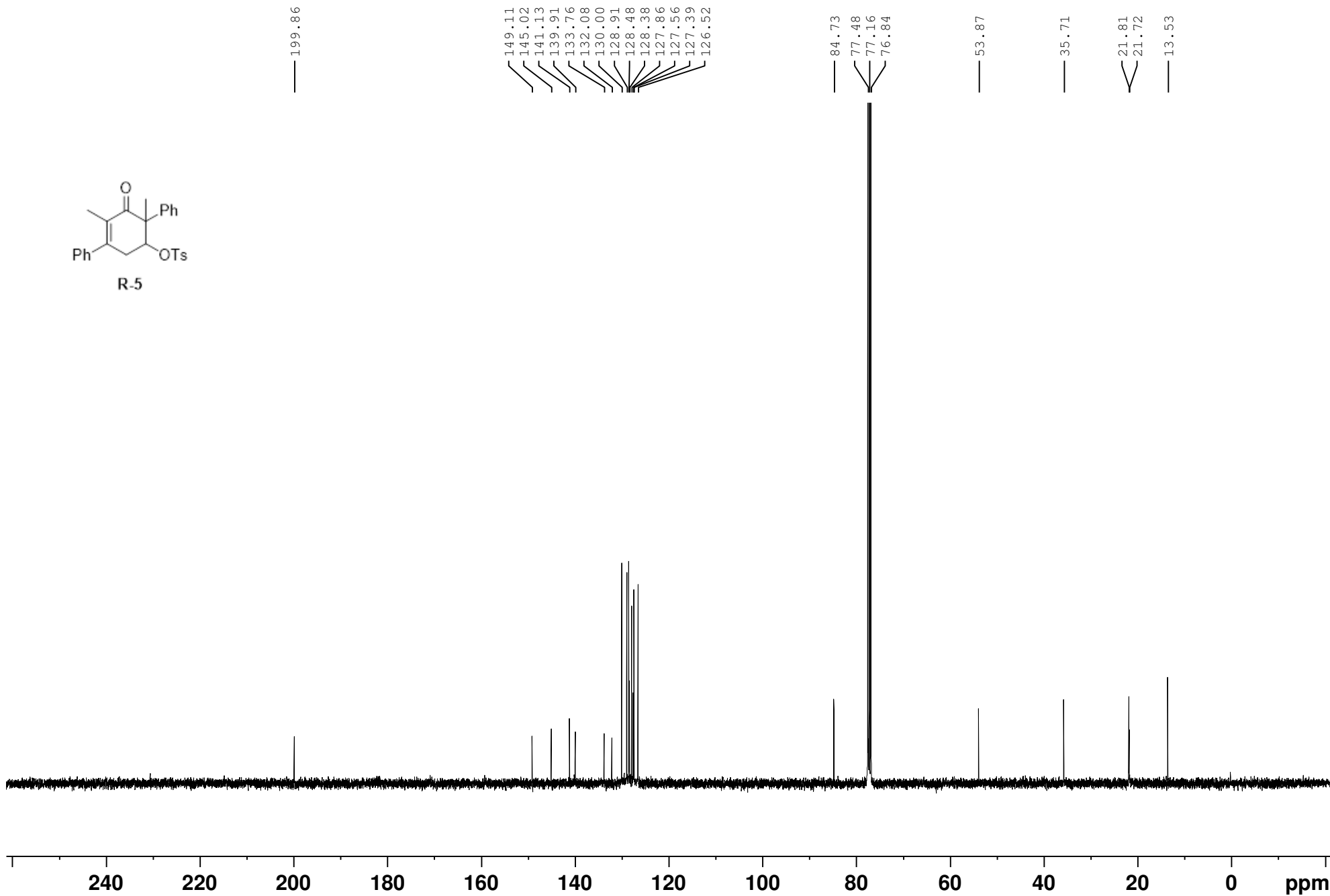
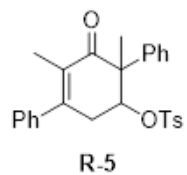
1.838

1.398

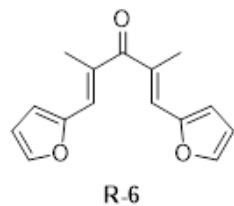
0.072  
-0.000



$^{13}\text{C}$  NMR (100 MHz,  $\text{CDCl}_3$ )



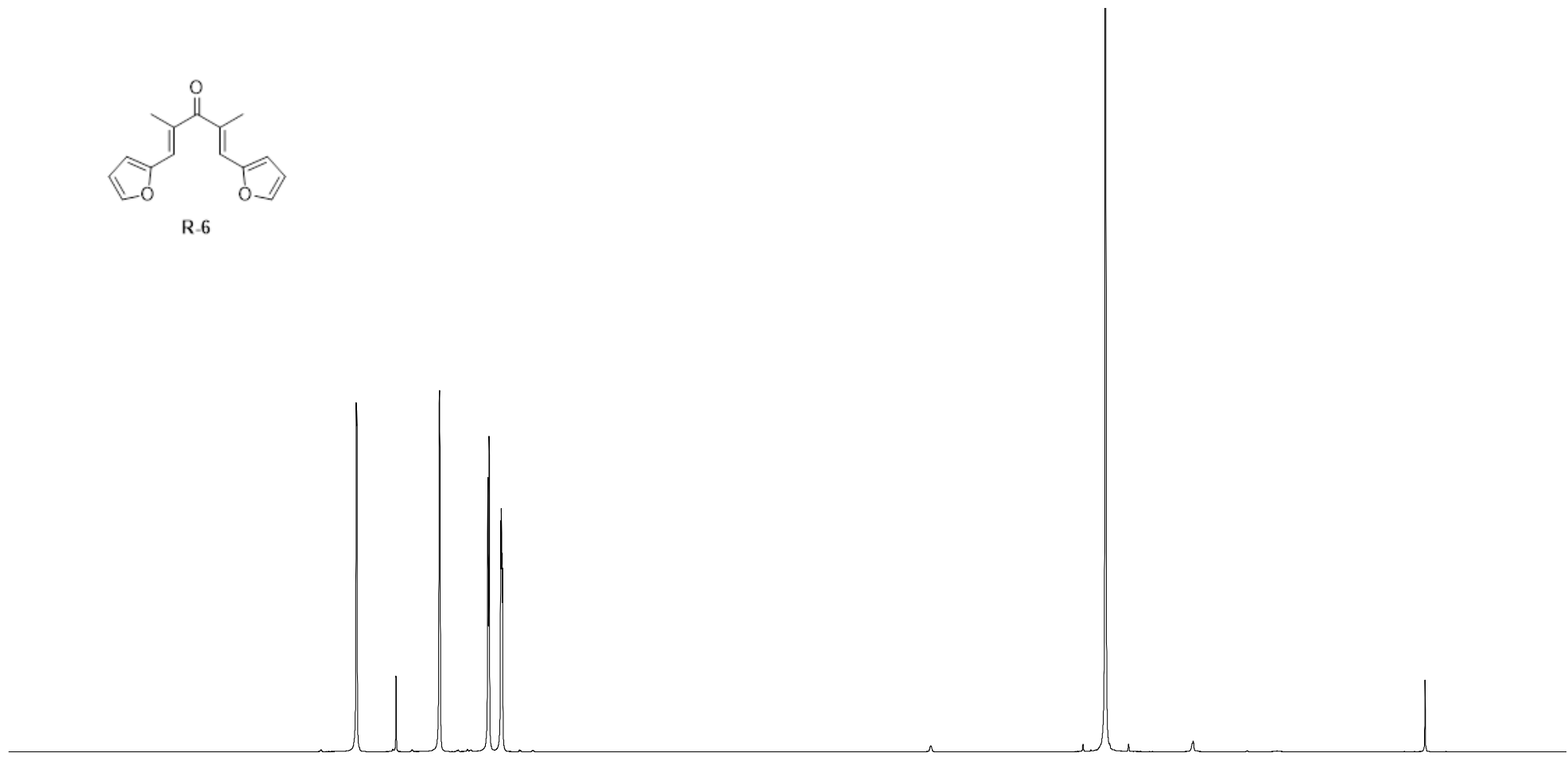
<sup>1</sup>H NMR (400 MHz, CDCl<sub>3</sub>)



7.543  
7.540  
7.263  
6.956  
6.614  
6.606  
6.524  
6.520  
6.516  
6.512

2.256  
2.255

— 0.000



9

8

7

6

5

4

3

2

1

0

ppm

1.86

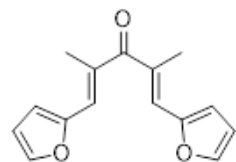
1.94

1.94

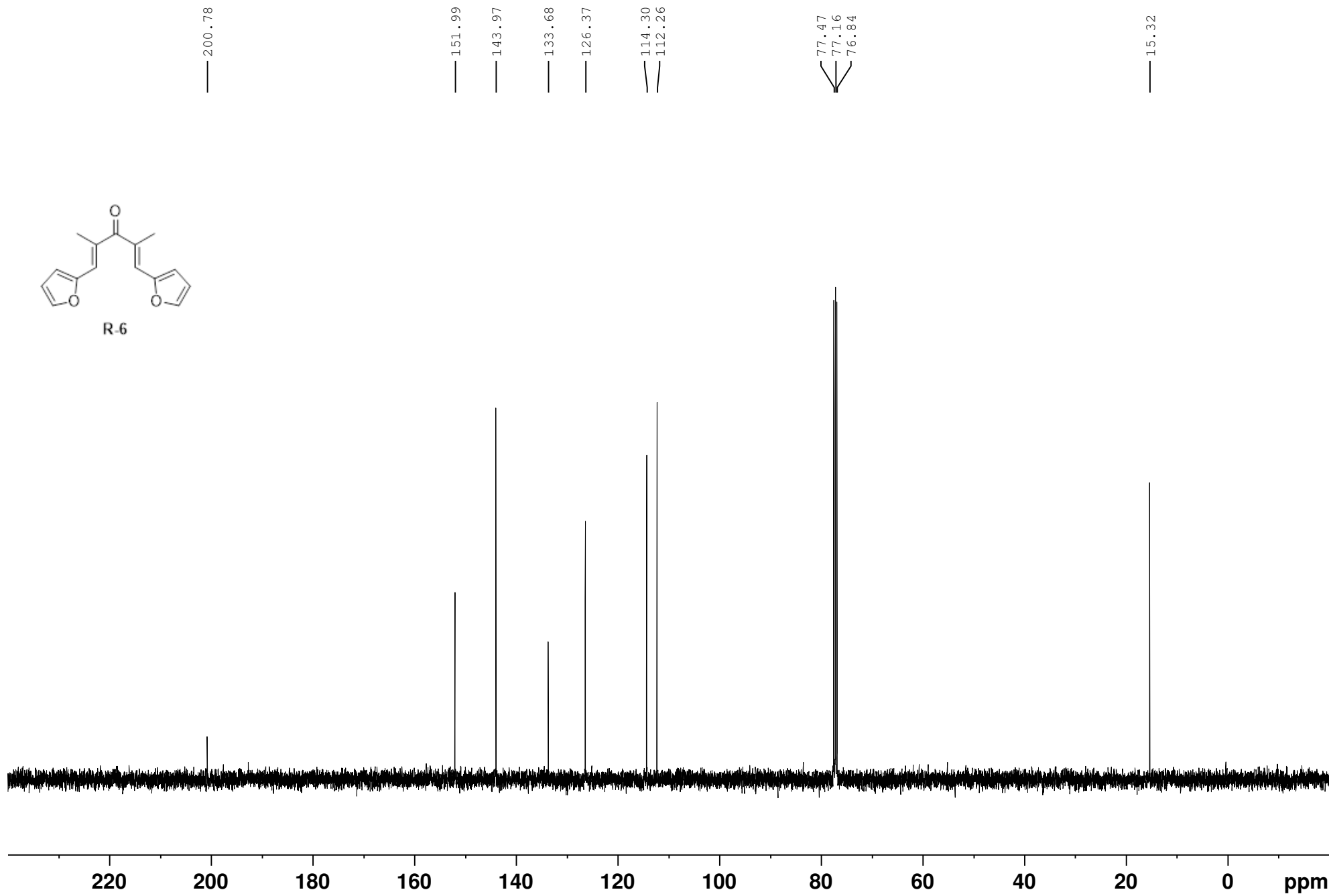
1.90

6.00

<sup>13</sup>C NMR (100 MHz, CDCl<sub>3</sub>)

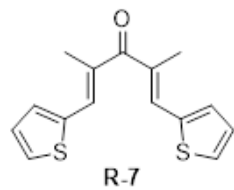


R-6





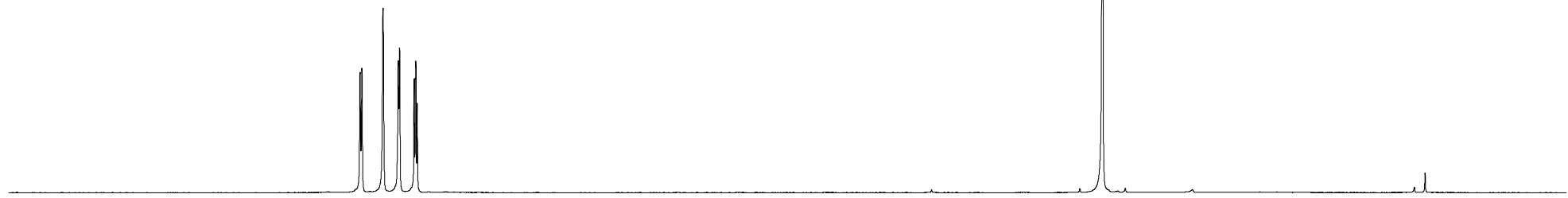
$^1\text{H}$  NMR (400 MHz,  $\text{CDCl}_3$ )



7.517  
7.504  
7.355  
7.247  
7.238  
7.136  
7.126  
7.123  
7.114

2.277

-0.000



9

8

7

6

5

4

3

2

1

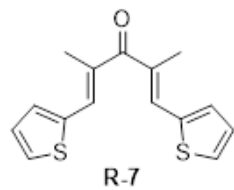
0

ppm

1.88  
2.00  
2.08  
1.98

6.14

$^{13}\text{C}$  NMR (100 MHz,  $\text{CDCl}_3$ )

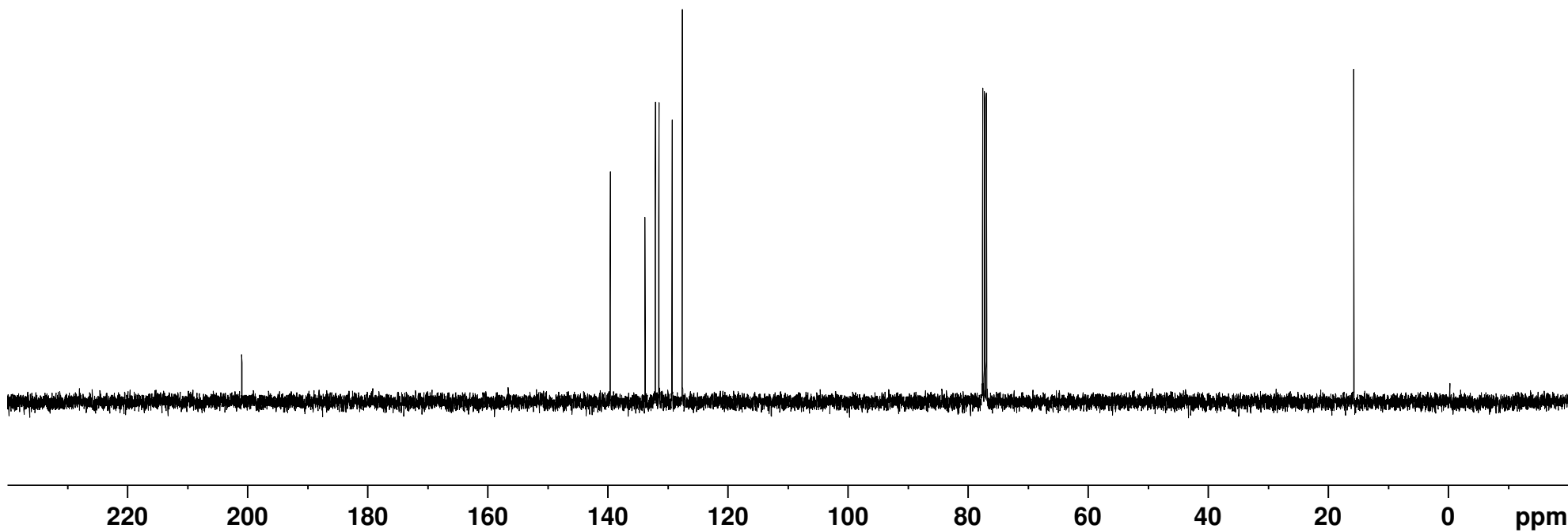


200.92

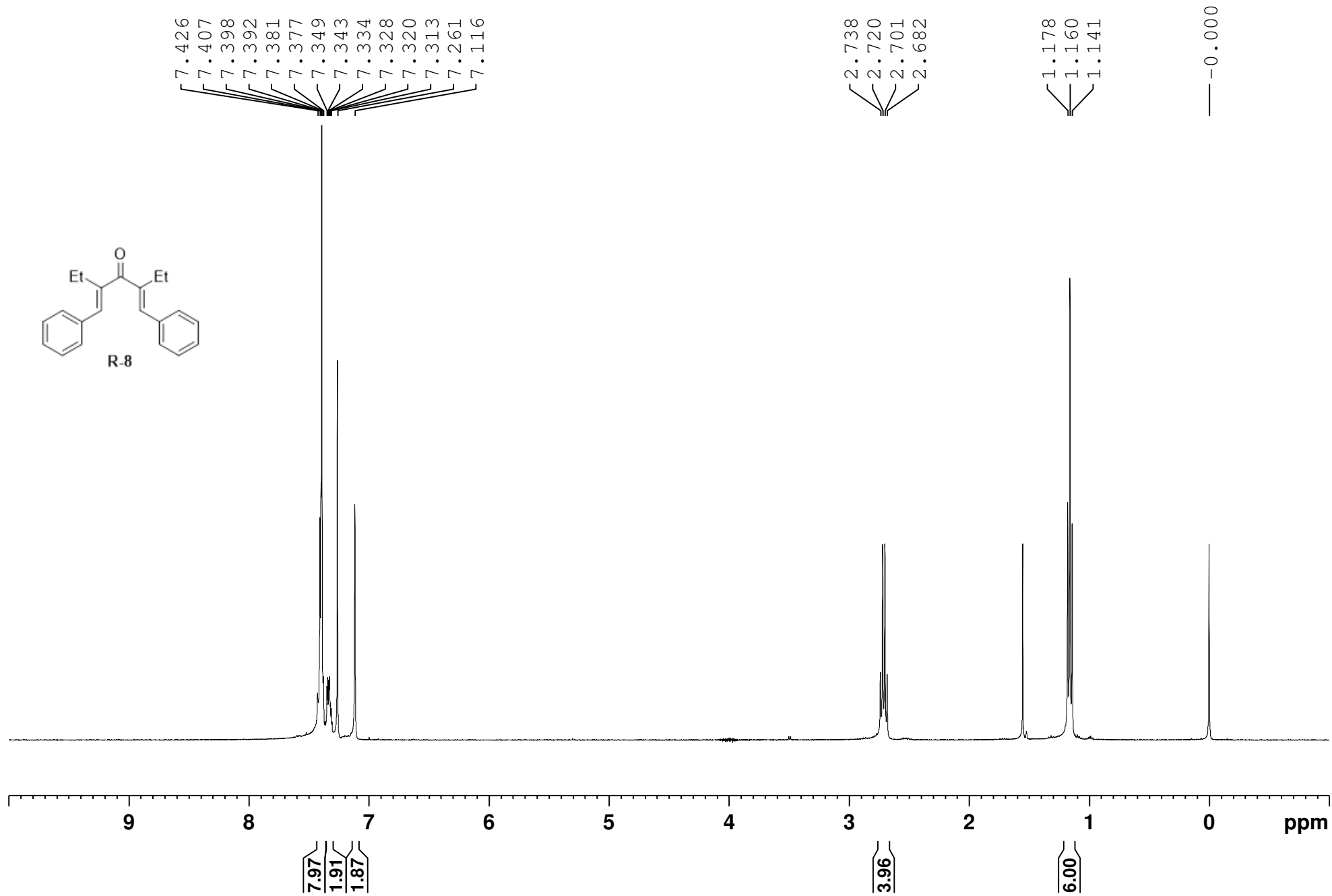
139.54  
133.73  
132.02  
131.42  
129.21  
127.53

77.47  
77.16  
76.84

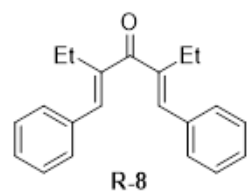
15.63



$^1\text{H}$  NMR (400 MHz,  $\text{CDCl}_3$ )



$^{13}\text{C}$  NMR (100 MHz,  $\text{CDCl}_3$ )

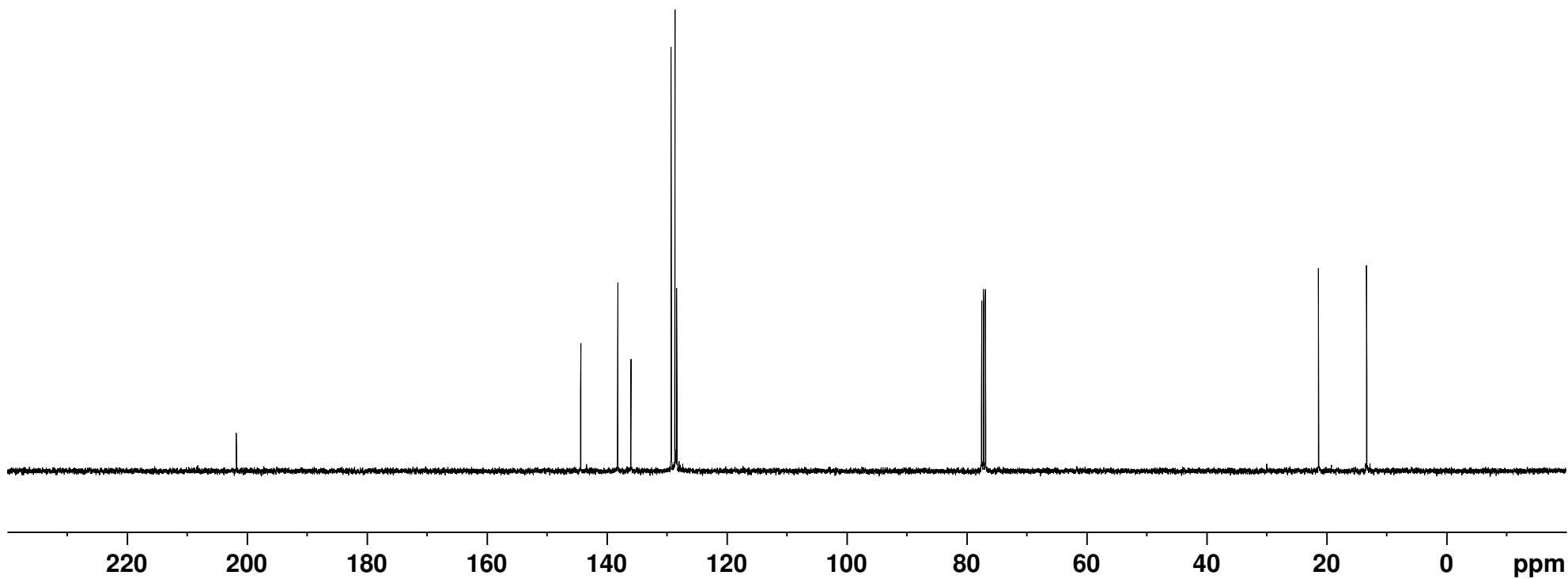


201.79

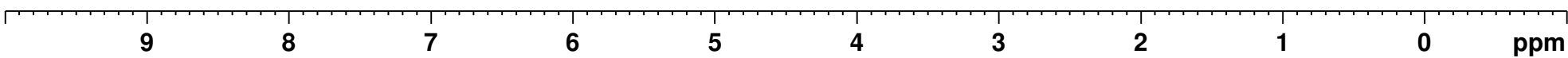
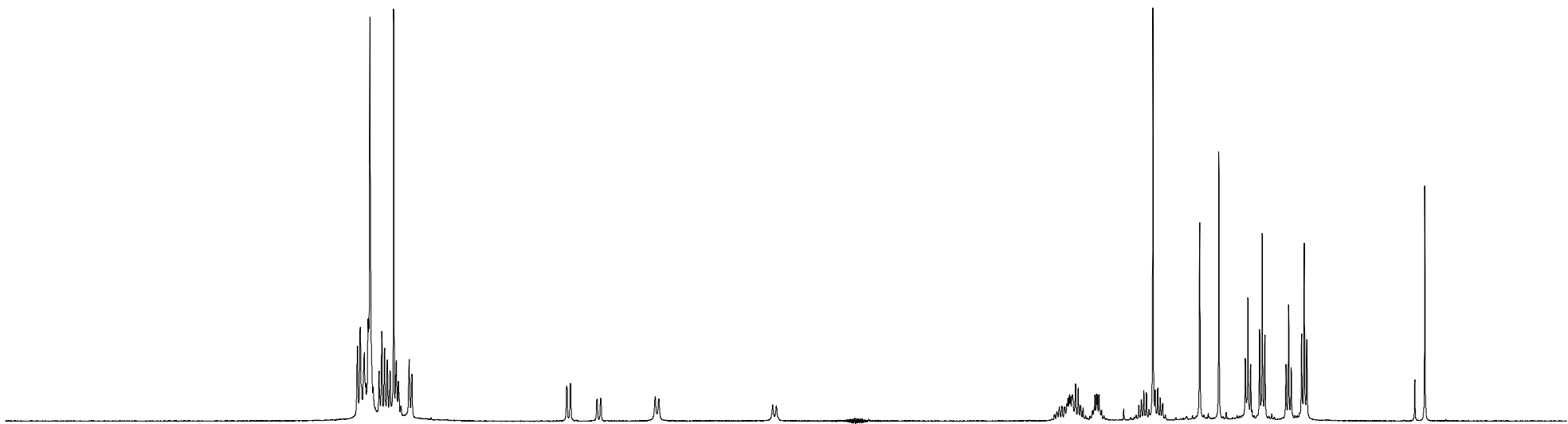
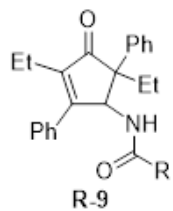
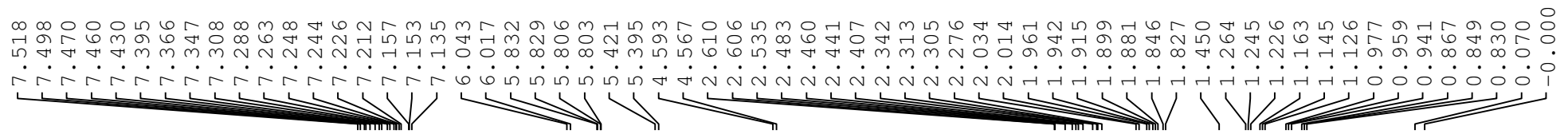
144.35  
138.17  
135.97  
129.25  
128.61  
128.33

77.48  
77.16  
76.84

21.30  
13.26



**<sup>1</sup>H NMR (400 MHz, CDCl<sub>3</sub>)**



<sup>13</sup>C NMR (100 MHz, CDCl<sub>3</sub>)

