

Supporting Information

Solute Dynamics of a Hydrophobic Molecule in Menthol-Thymol Based Type-V Deep Eutectic Solvent: Effect of Composition of the Components

Sagar Srivastava, Sapana Sinha, Sanyukta Bhattacharjee, Debabrata Seth*

Department of Chemistry, Indian Institute of Technology Patna, Patna 801103, Bihar, India,

E-mail: debabrata@iitp.ac.in; Phone: +91- 6115-233028

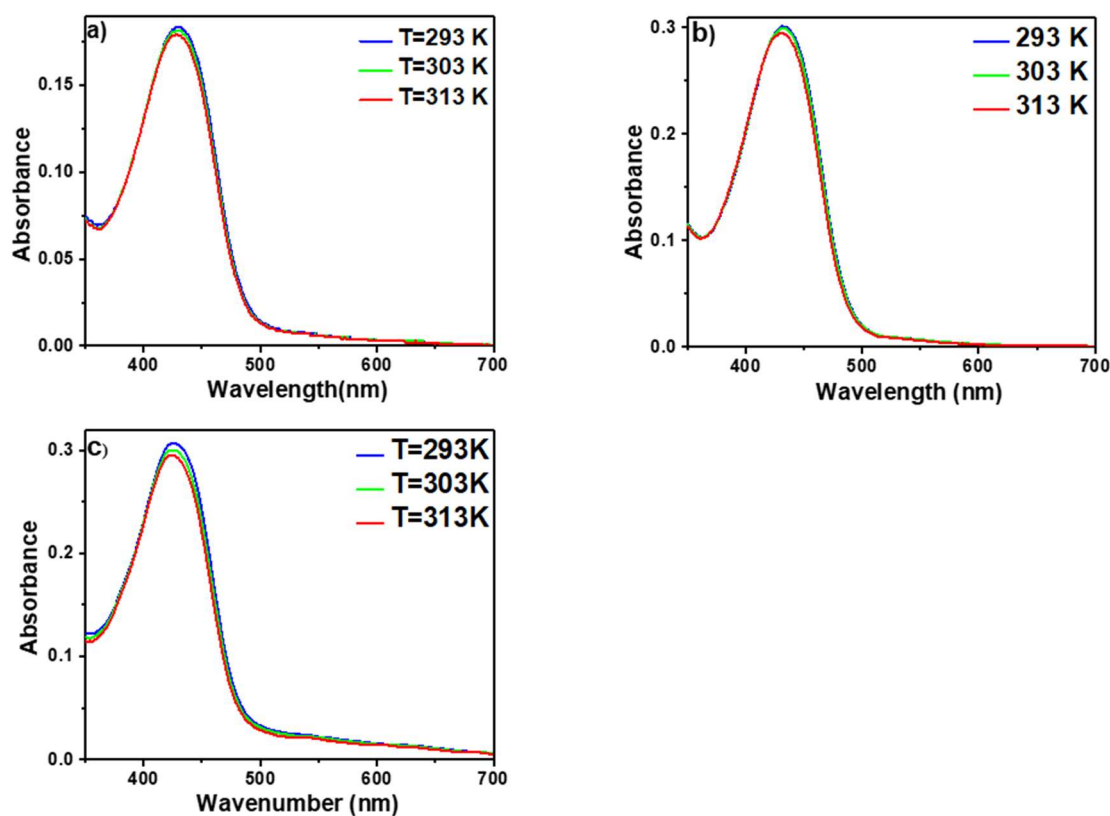


Figure S1: Absorbance spectra of C153 in all DESs with the variation of temperature.

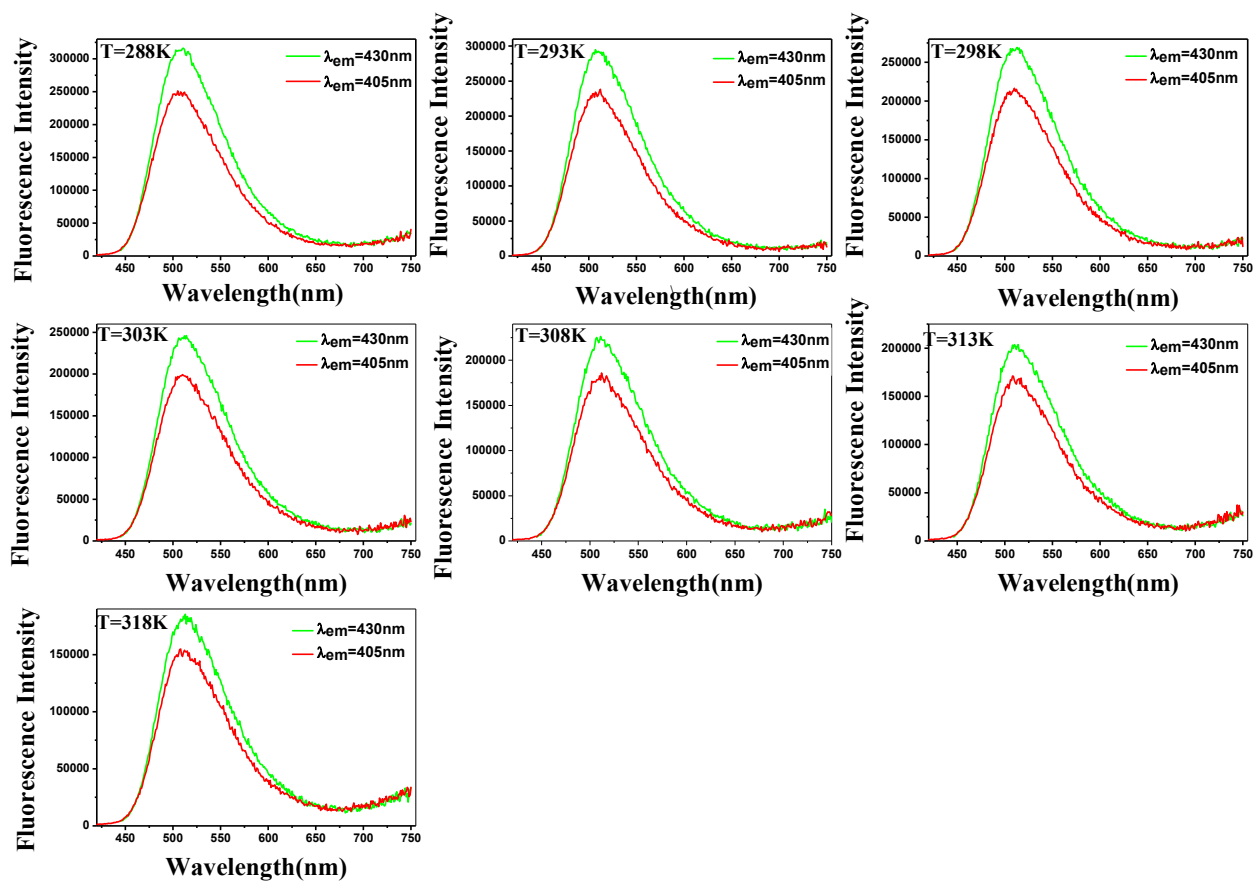


Figure S2: The emission Spectra of C153 in M1T1 DES with the variation of temperature.

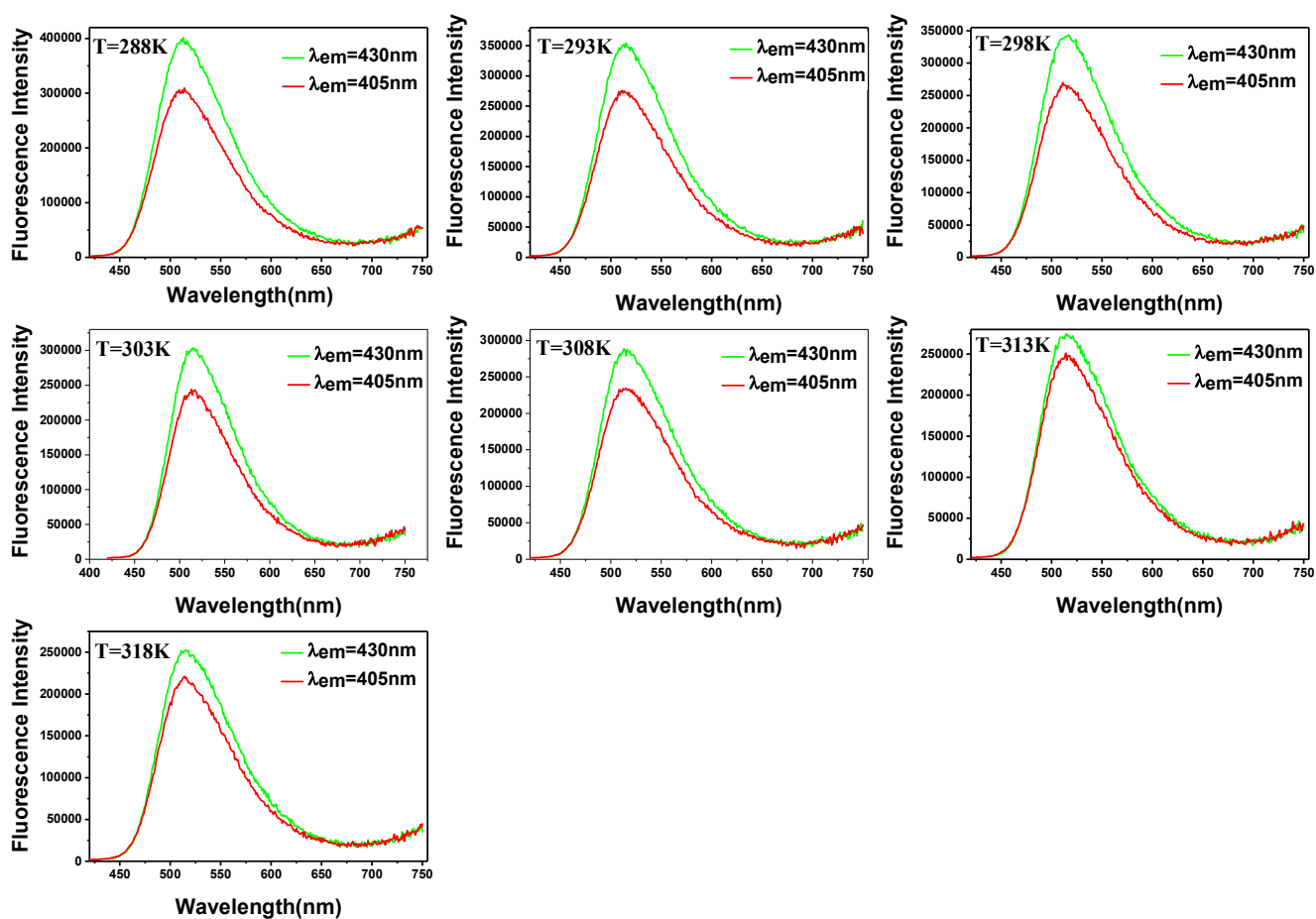


Figure S3: The emission spectra of C153 in M1T1.5 DES with the variation of temperature.

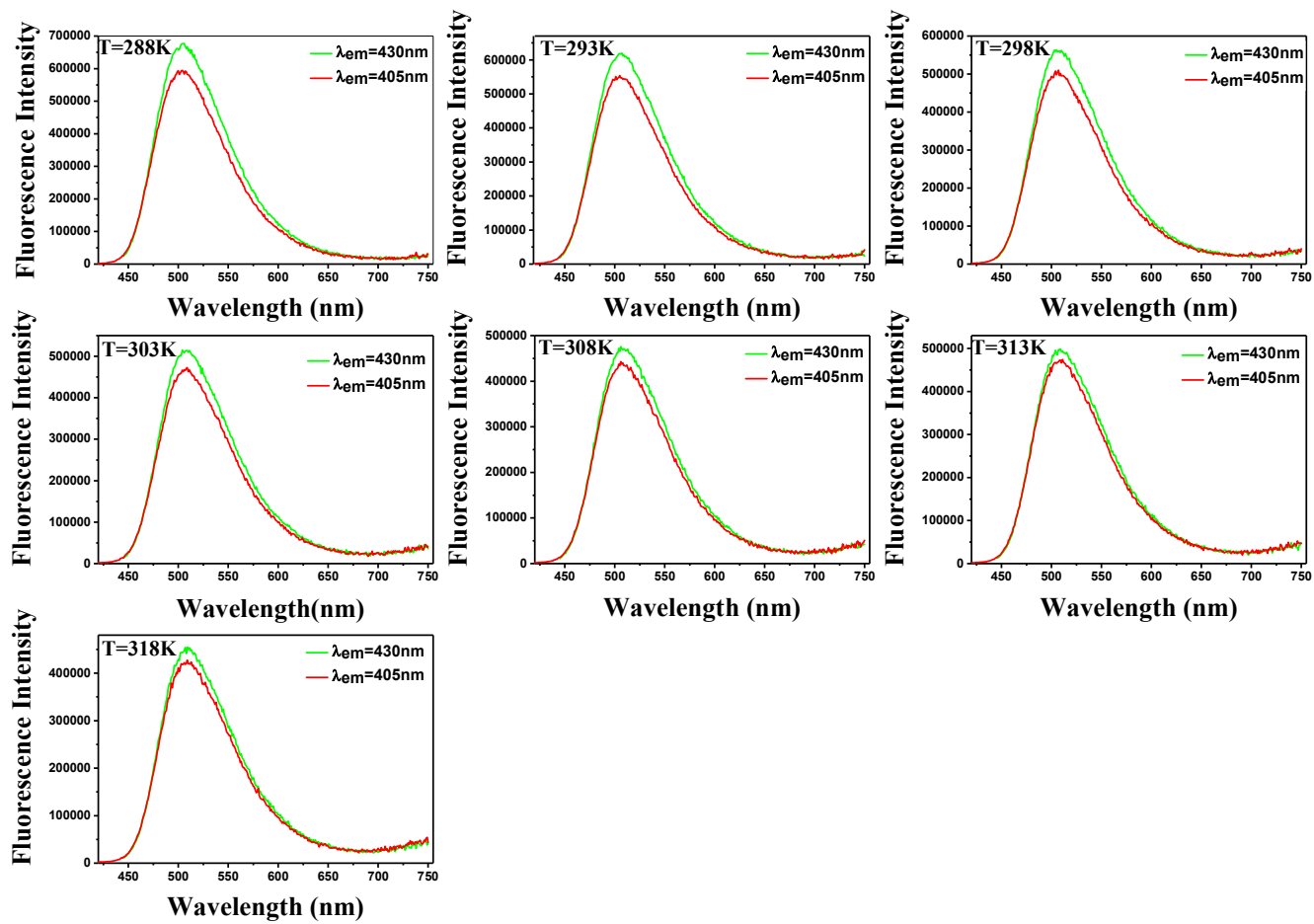


Figure S4: The emission spectra of C153 in M2T1 DES with the variation of temperature.

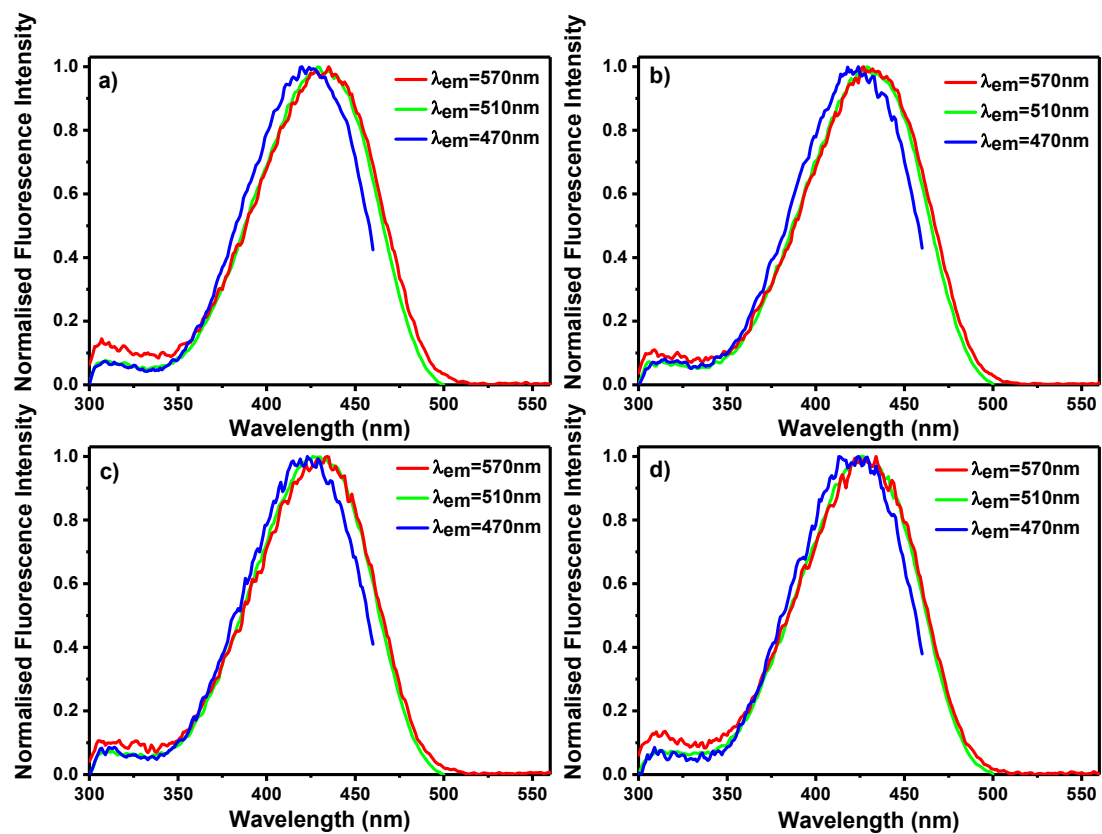


Figure S5: The excitation spectra of C153 in MIT1 DES with the variation of temperature and emission wavelengths.

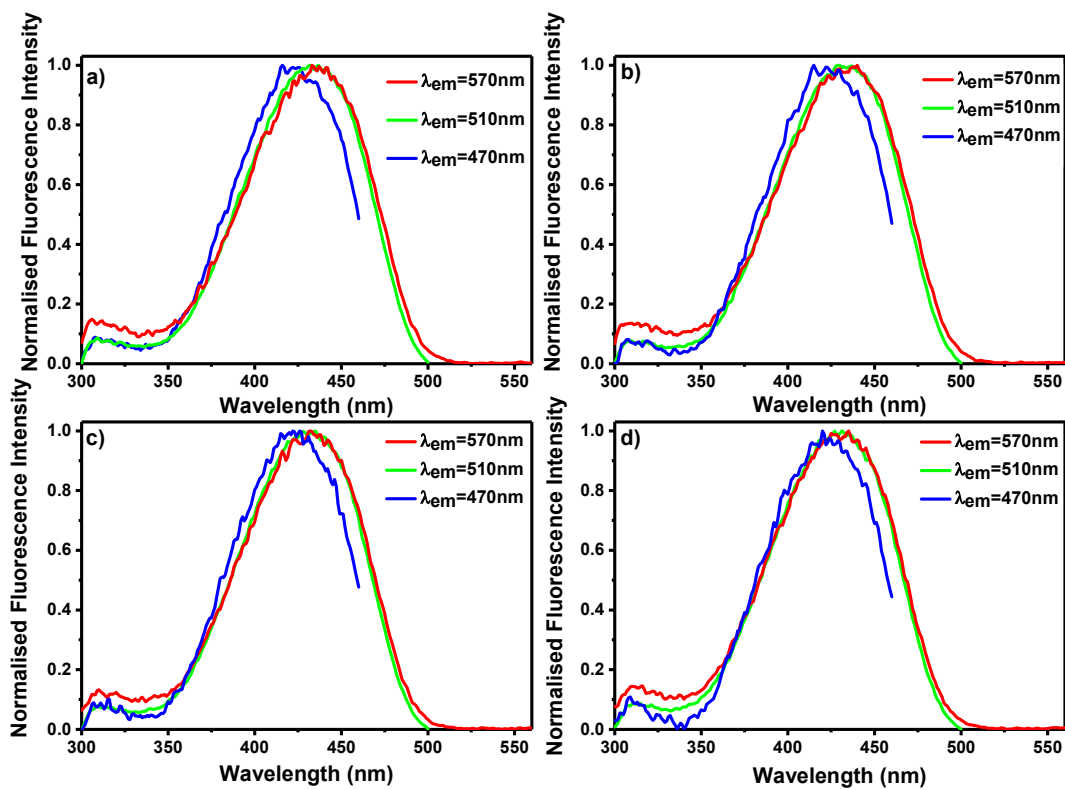


Figure S6: The excitation spectra of C153 in MIT1.5 DES with the variation of temperature and emission wavelengths.

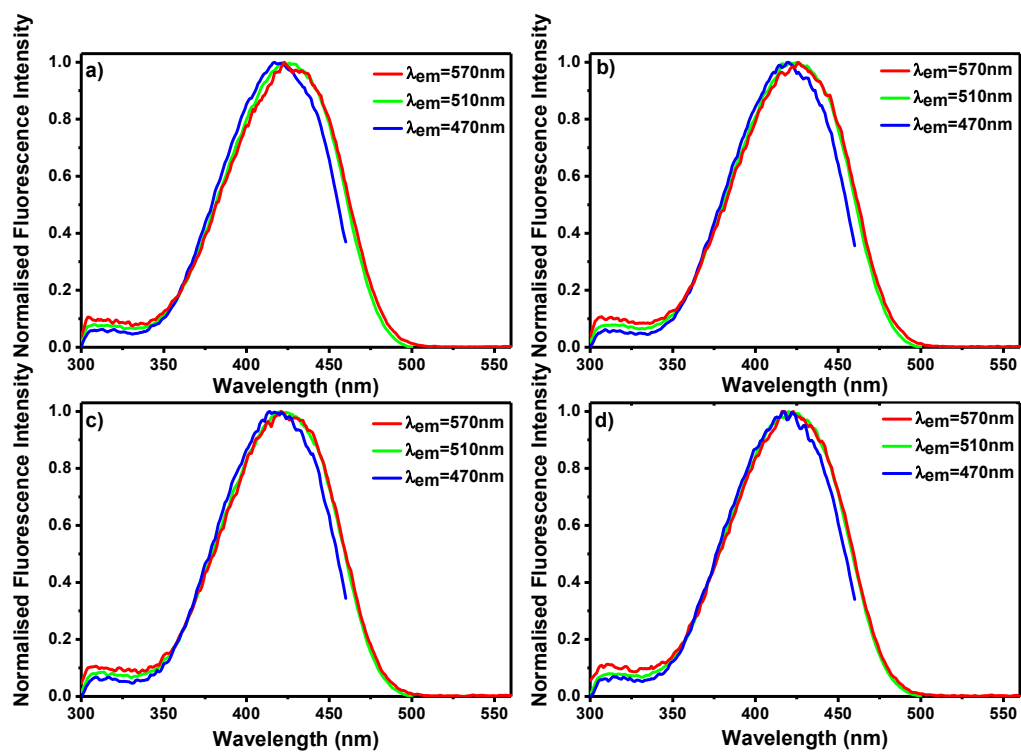


Figure S7: The excitation spectra of C153 in DES (Men:Thy = 2:1) with the variation of temperature and the emission wavelengths.

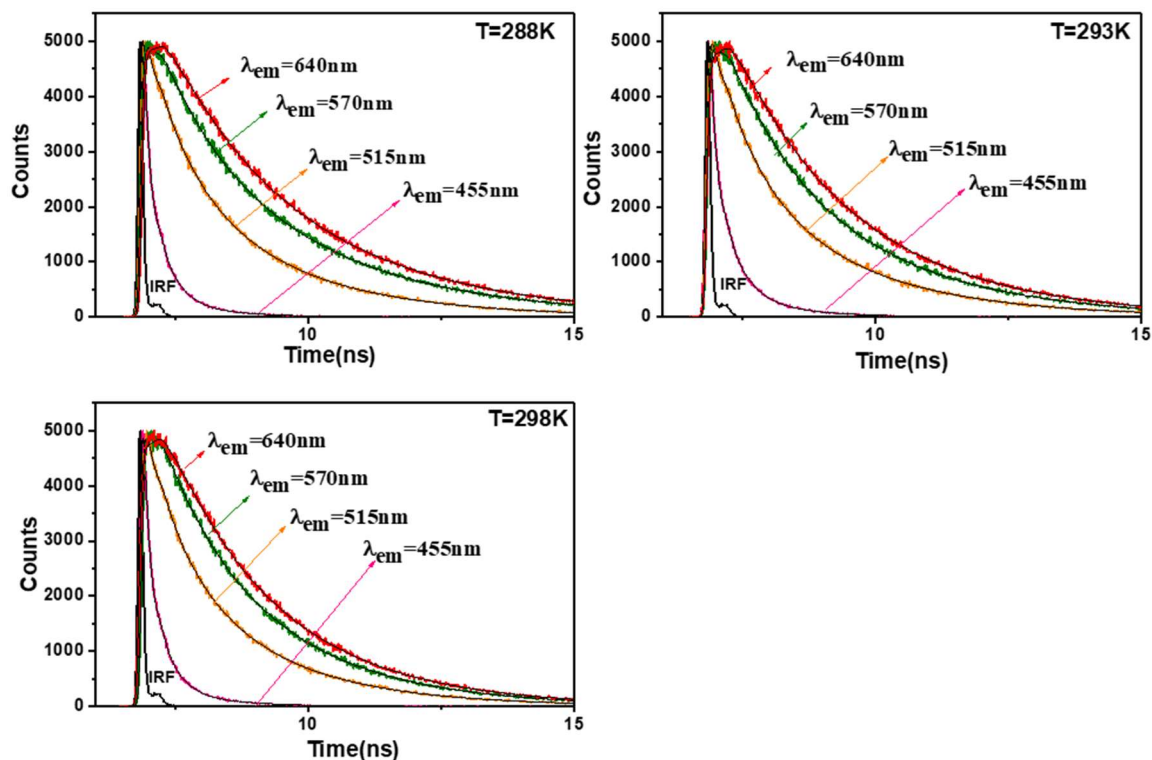


Figure S8: Emission wavelength-dependent fluorescence decay profile of C153 at different temperatures in MIT1.5 DES.

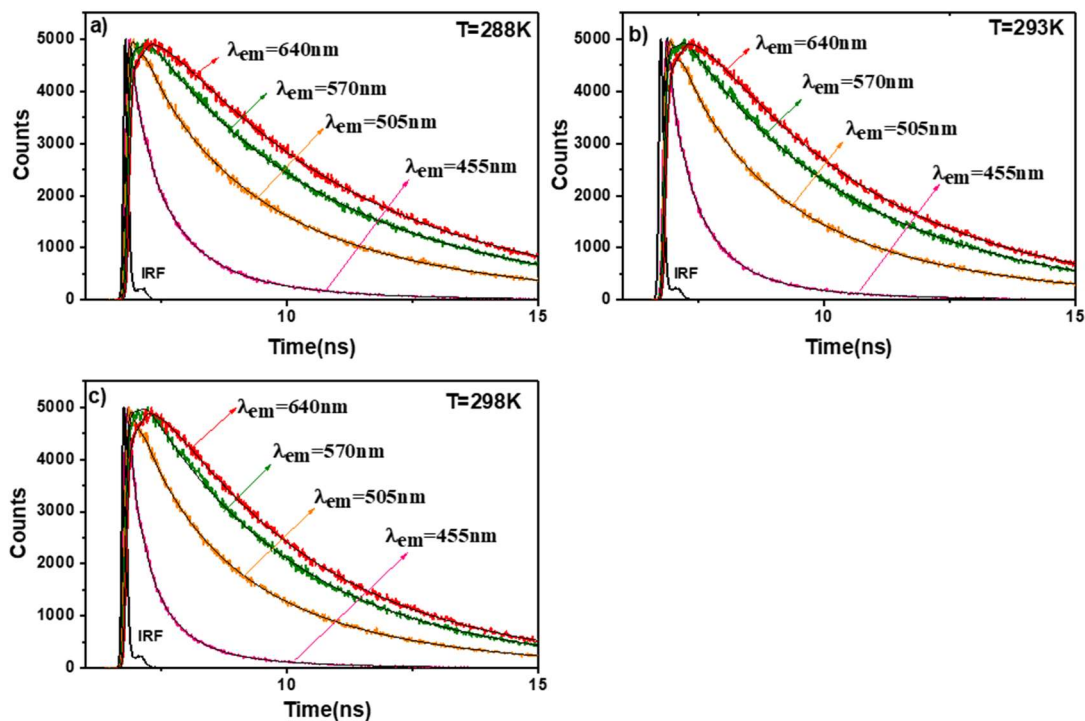


Figure S9: Emission wavelength-dependent fluorescence decay profile of C153 at different temperatures in M2T1 DES.

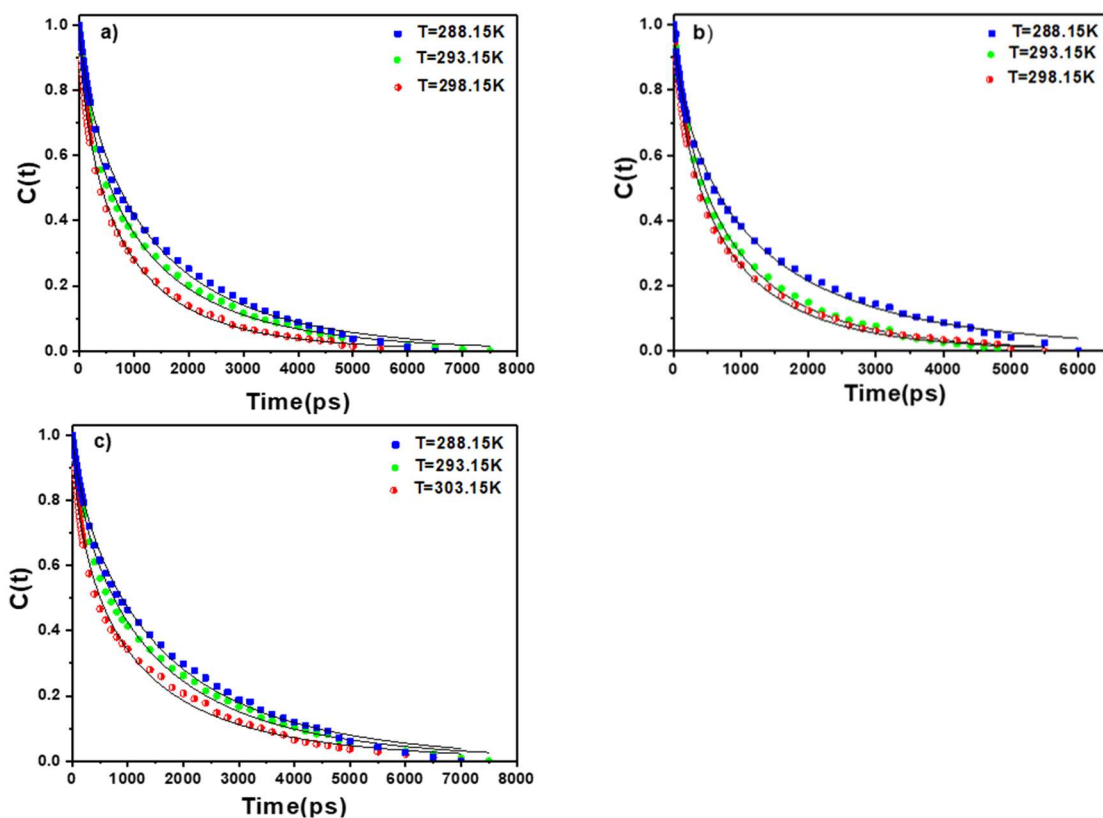


Figure S10: Decay of solvent response function ($C(t)$) with respect to time in M1T1, M1T1.5 and M2T1 DESs respectively. Solid line corresponds to the stretched exponential fit.