

1 **Supplemental Information (SI)**

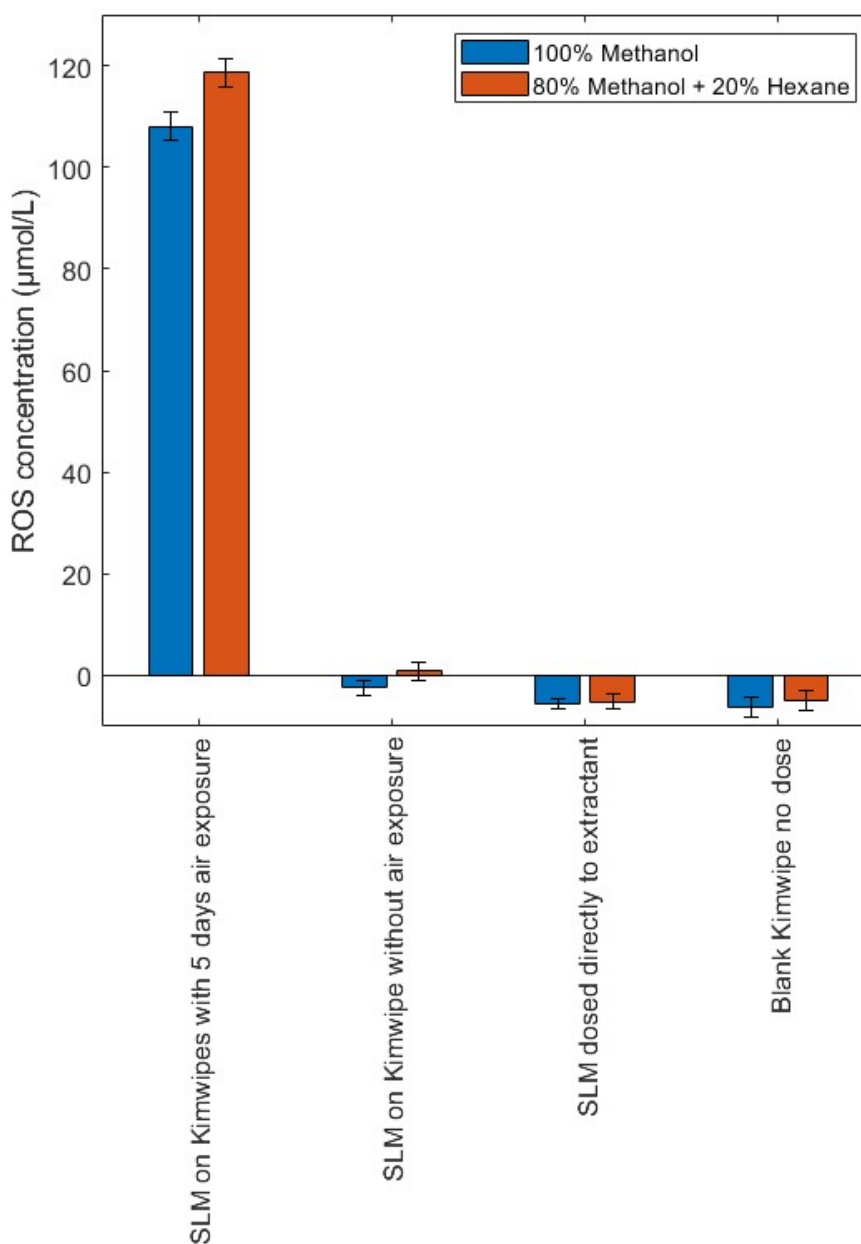
2 *Reactive Oxygen Species on Indoor Surfaces*

3 *Zhenduo Yao<sup>a</sup>, Glenn Morrison<sup>a\*</sup>*

4 a. Department of Environmental Sciences and Engineering, Gillings School of Global Public  
5 Health, University of North Carolina at Chapel Hill, Chapel Hill, NC, United States

6 \*Corresponding Author:

7 Email: [glennmor@email.unc.edu](mailto:glennmor@email.unc.edu)

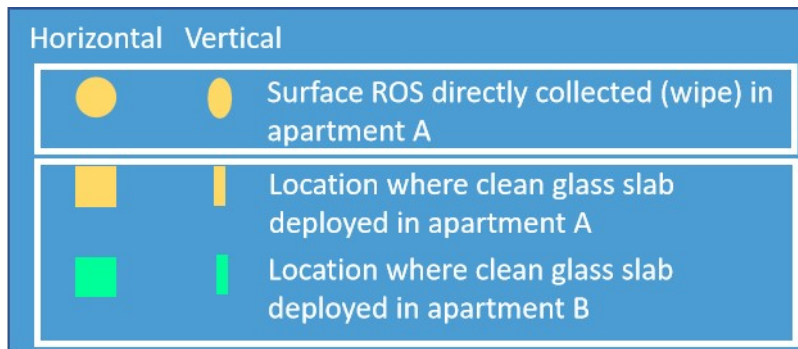


8

9 **Figure S1.** Comparison of ROS extraction using different extracts.



10



11

12 **Figure S2.** Floor plan of apartment A and B

13

14

15

16

17

18

19

20

21

22

23

24

25

26

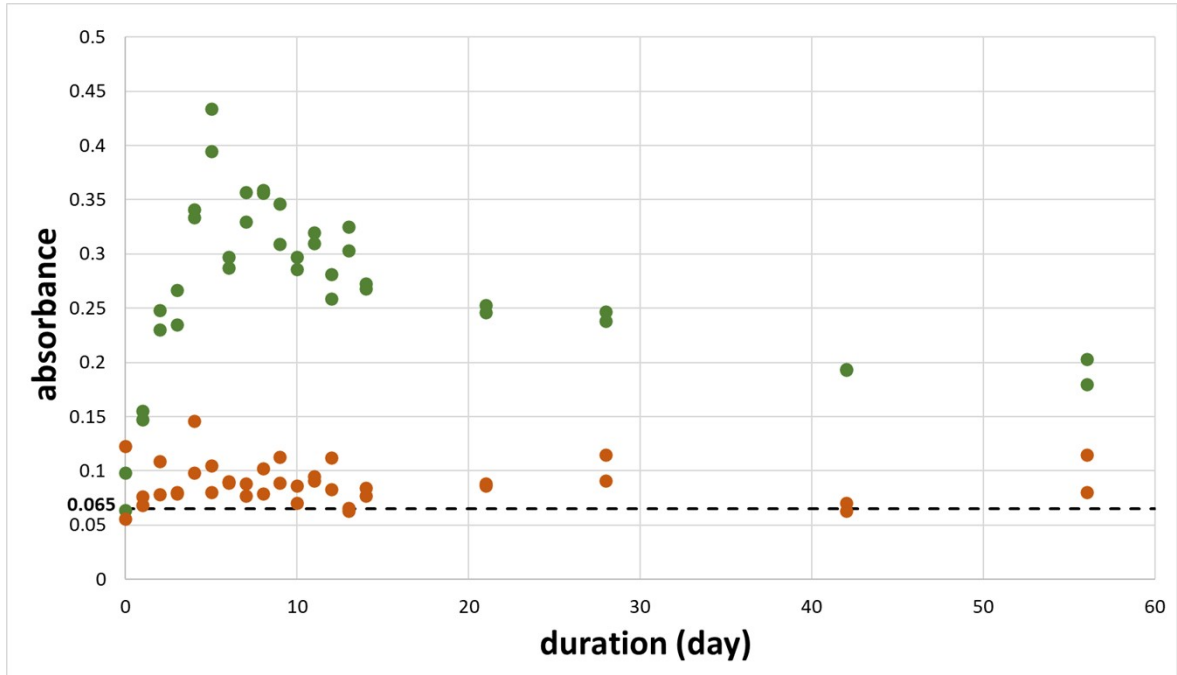
27

28 **Table S1.** Surface areas of SLM films on dosed glass plates.

No.	date deployed	date collected	duration (day)	SLM film area (cm <sup>2</sup> )
1	5/24/2022	5/24/2022	0	85.16
2	5/23/2022	5/24/2022	1	77.70
3	5/22/2022	5/24/2022	2	75.93
4	5/21/2022	5/24/2022	3	60.06
5	5/20/2022	5/24/2022	4	77.19
6	5/19/2022	5/24/2022	5	75.48
7	5/18/2022	5/24/2022	6	84.64
8	5/17/2022	5/24/2022	7	71.09
9	5/16/2022	5/24/2022	8	75.41
10	5/15/2022	5/24/2022	9	73.67
11	5/14/2022	5/24/2022	10	87.54
12	5/13/2022	5/24/2022	11	72.93
13	5/12/2022	5/24/2022	12	77.38
14	5/11/2022	5/24/2022	13	64.42
15	5/10/2022	5/24/2022	14	85.09
16	5/31/2022	6/21/2022	21	81.12
17	5/31/2022	6/28/2022	28	86.68
18	5/31/2022	7/12/2022	42	72.48
19	5/31/2022	7/26/2022	56	66.93

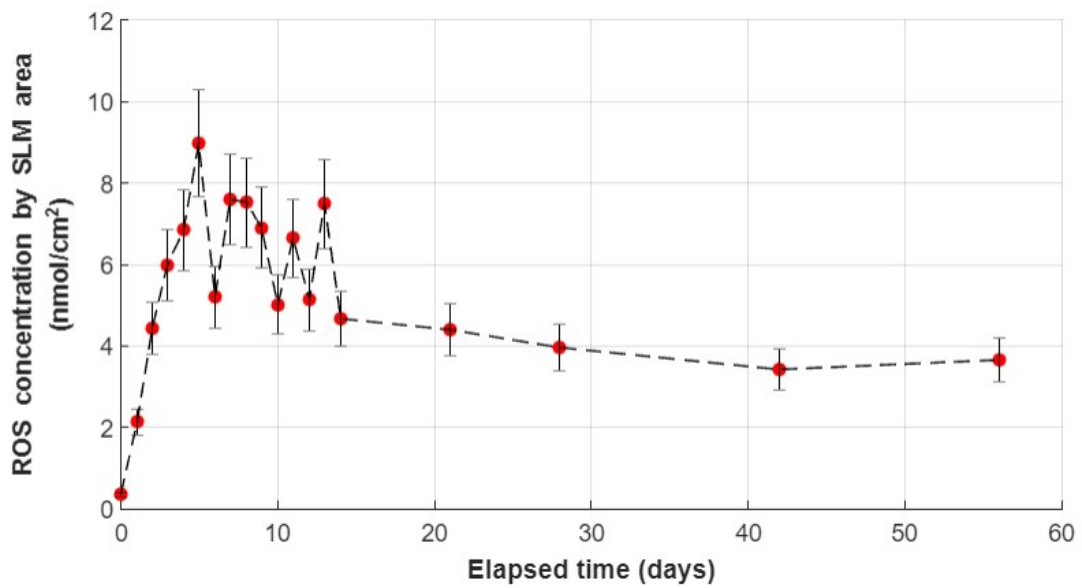
29

30



31

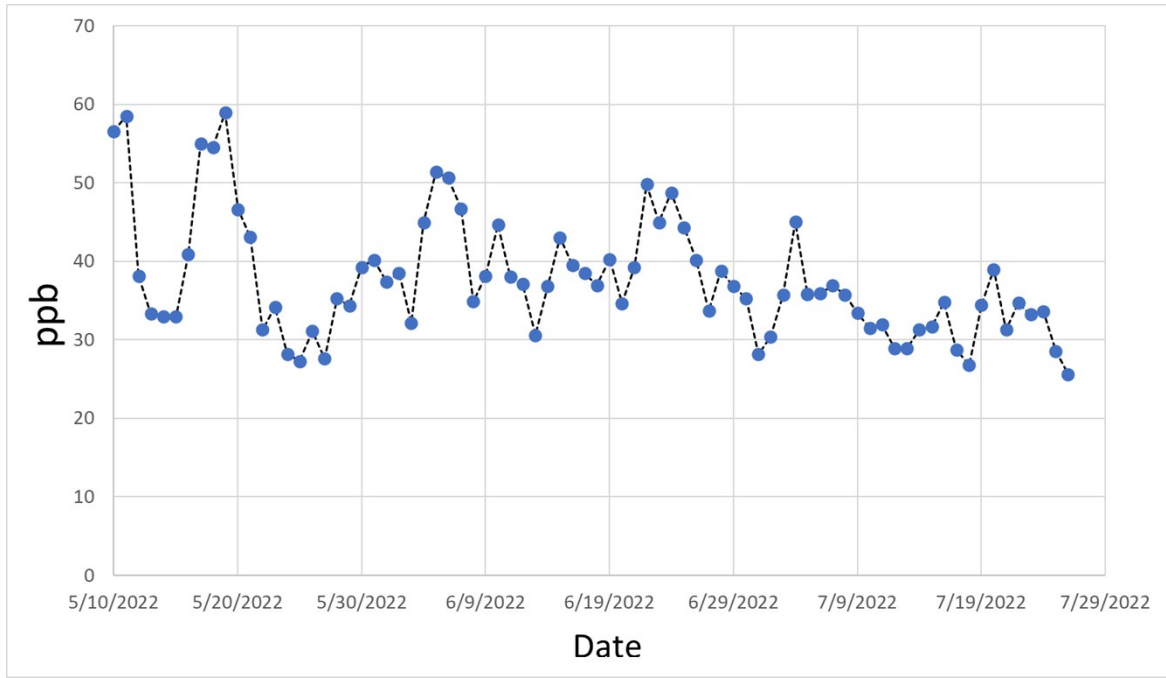
32 **Figure S3.** Absorbance of first and second wipe for oil coated glass plates.



33

34 **Figure S4.** Dynamic ROS area concentration (nmol/cm<sup>2</sup> on oil coated glass plate)

35



36

37 **Figure S5.** Daily average ozone concentration in lab during coated glass plates

38 experiment.

39

40

41

42