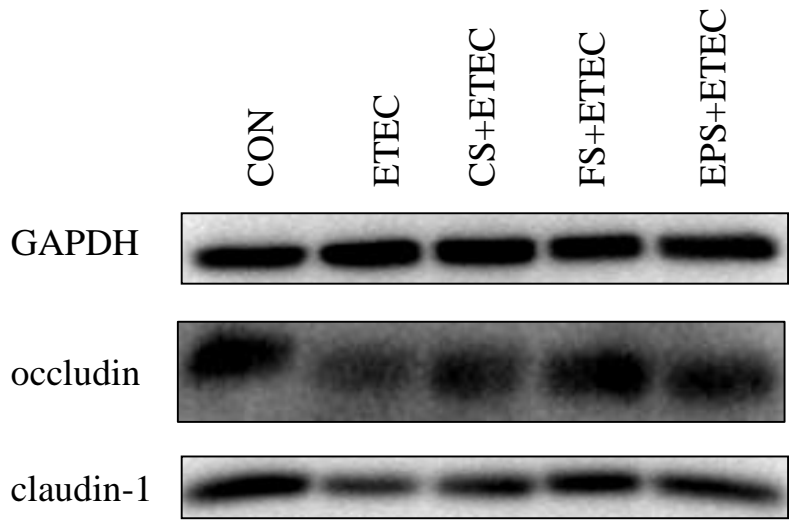


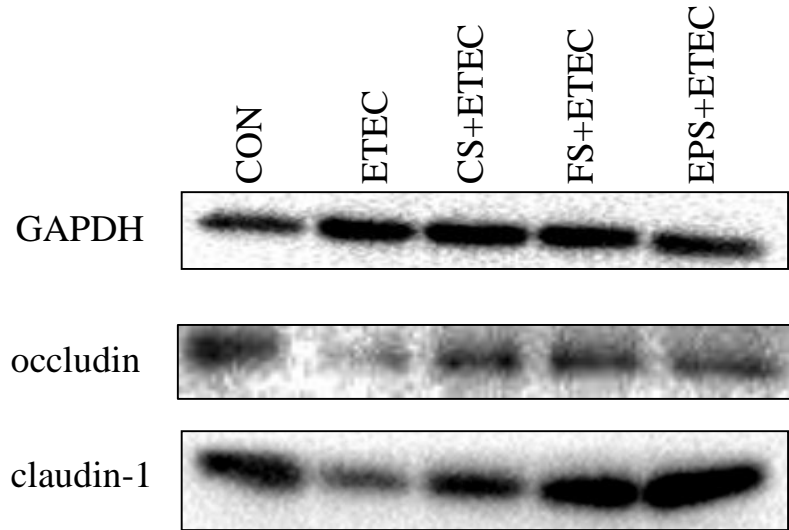
Fig.3 IPEC-J2 cells were pretreated with *L. plantarum* T10 (CS) and its fermentation supernatant (FS) and EPS for 3 h respectively and were subjected to a 6-hETEC challenge.

In IPEC-J2 cells, Western Blotting of occluding and claudin-1

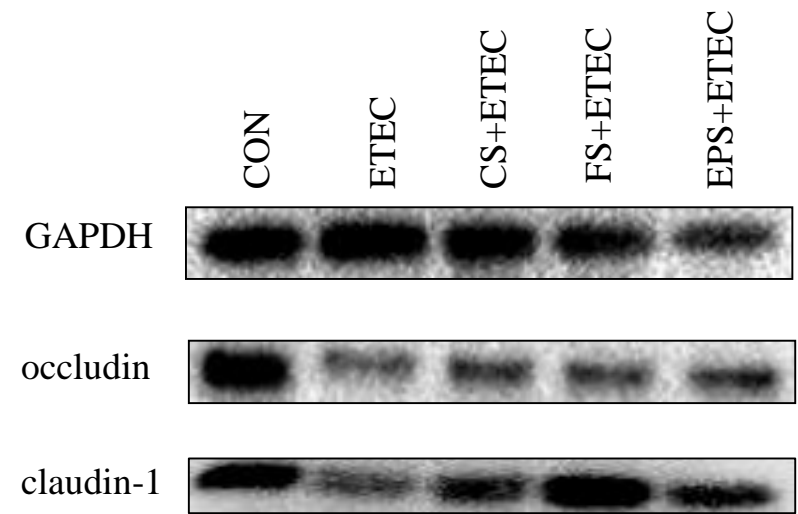
1.



2.

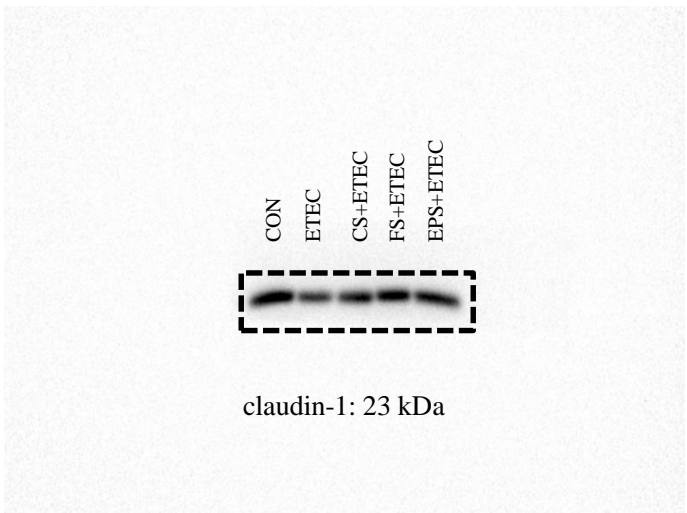
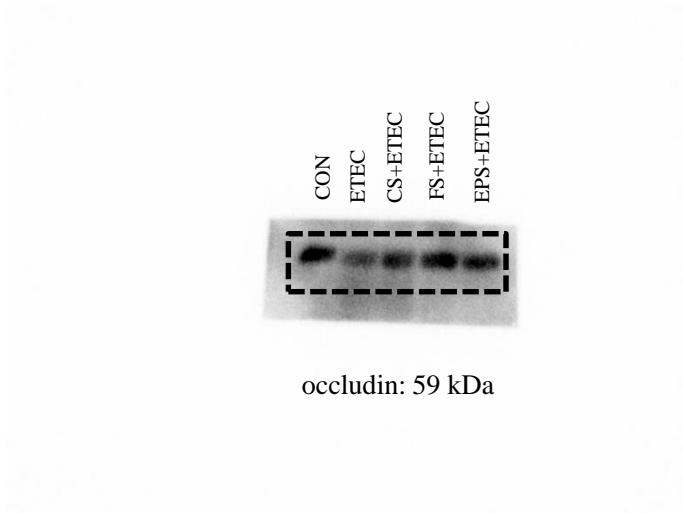
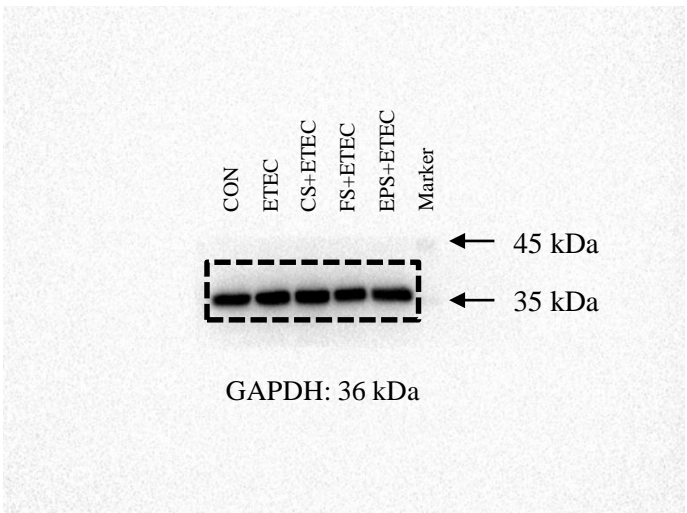


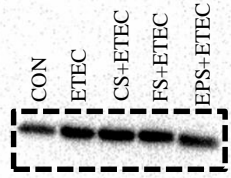
3.



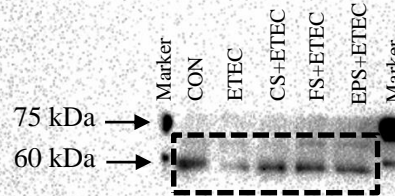
Results of 3 independent experiments

The following is the original plot of the above bands

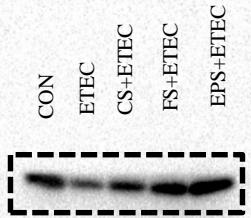




GAPDH: 36 kDa



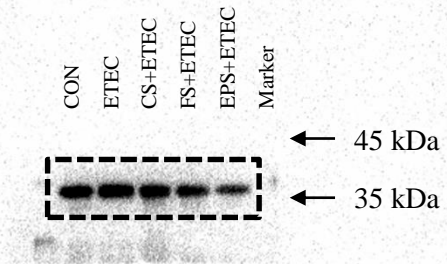
occludin: 59 kDa



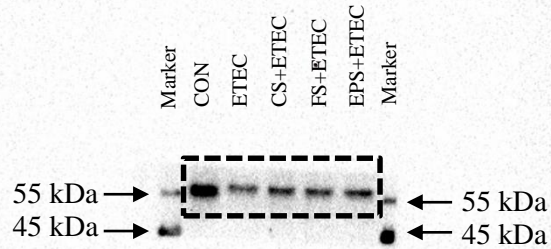
claudin-1: 23 kDa

3

GAPDH

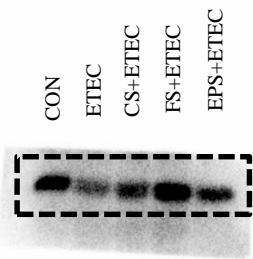


GAPDH: 36 kDa



occludin: 59 kDa

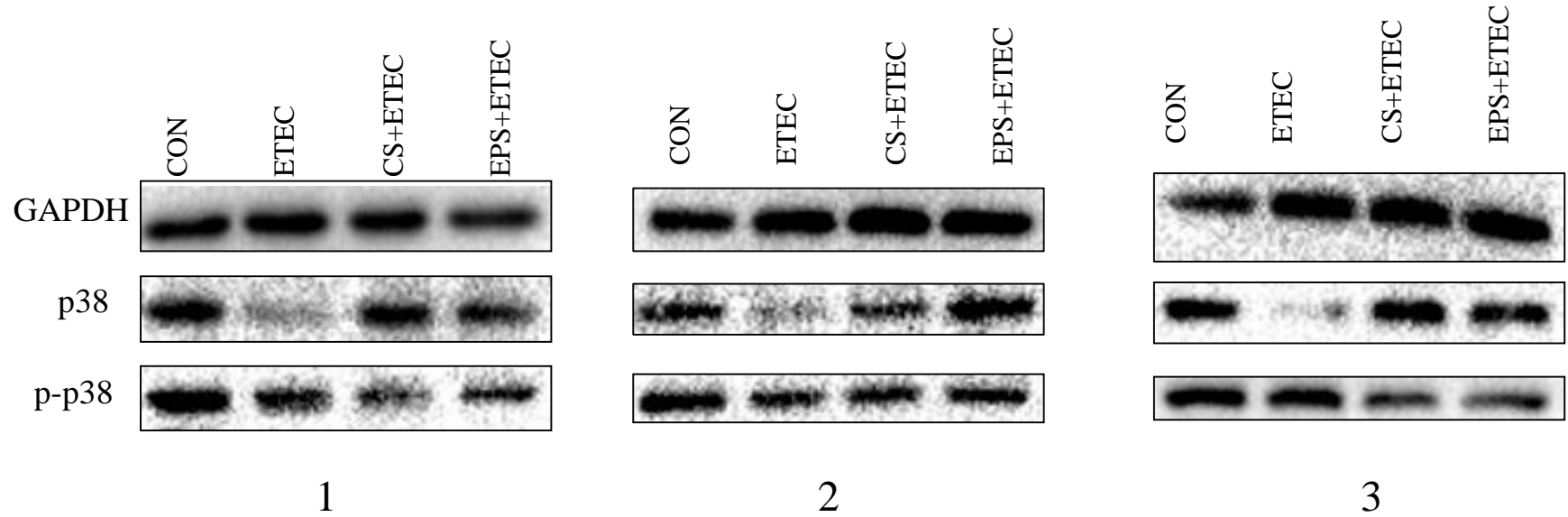
claudin-1



claudin-1: 23 kDa

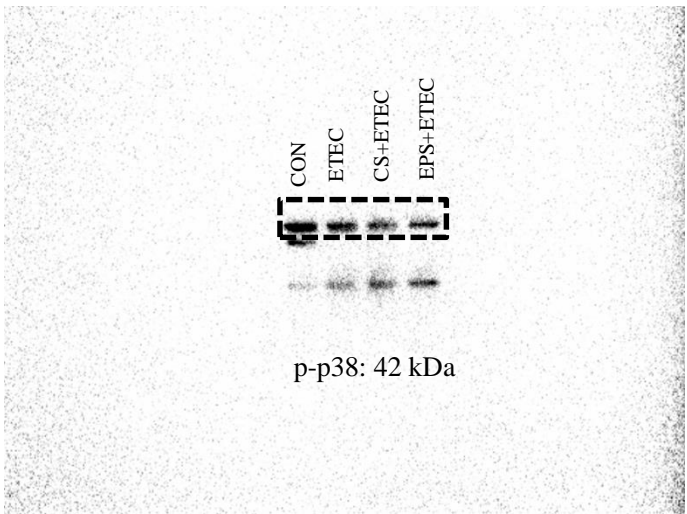
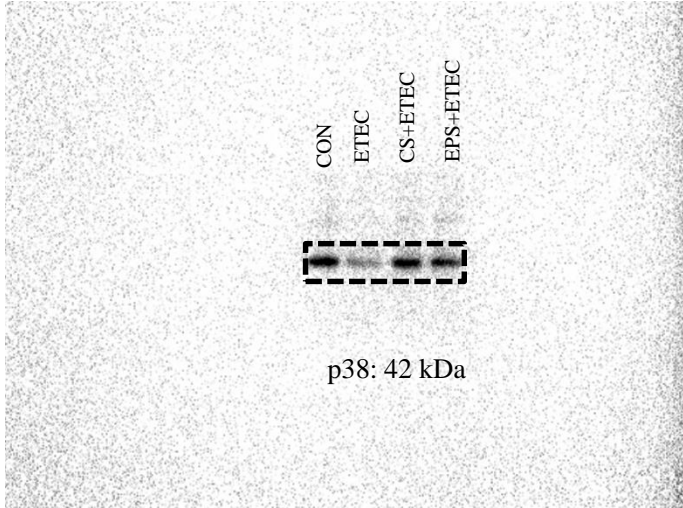
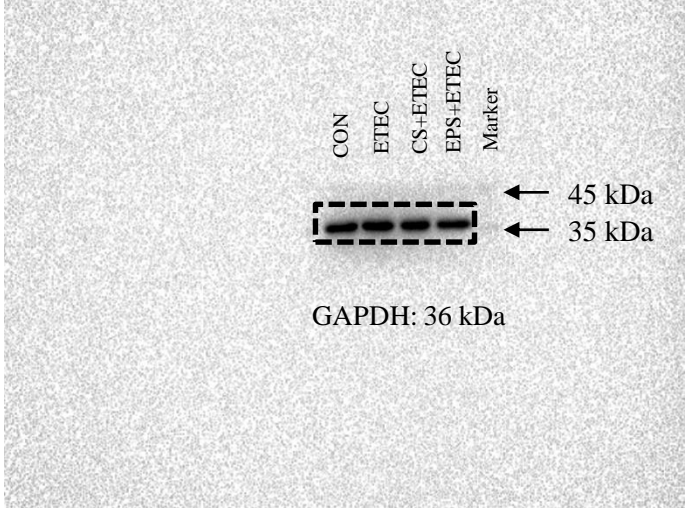
Western Blotting analysis for p38 and p-p38

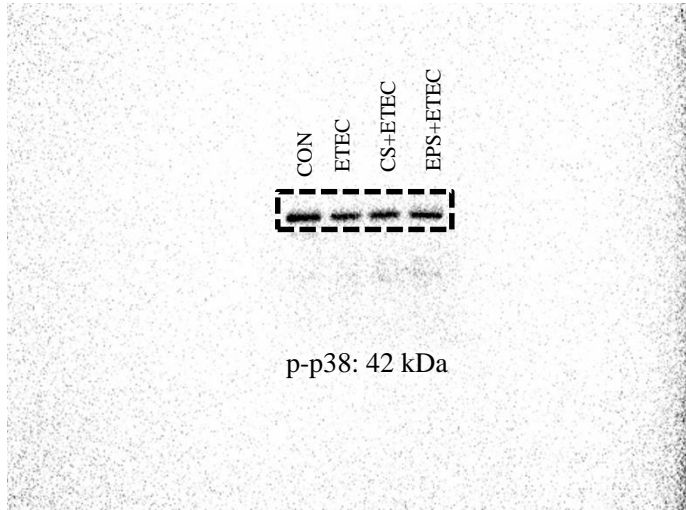
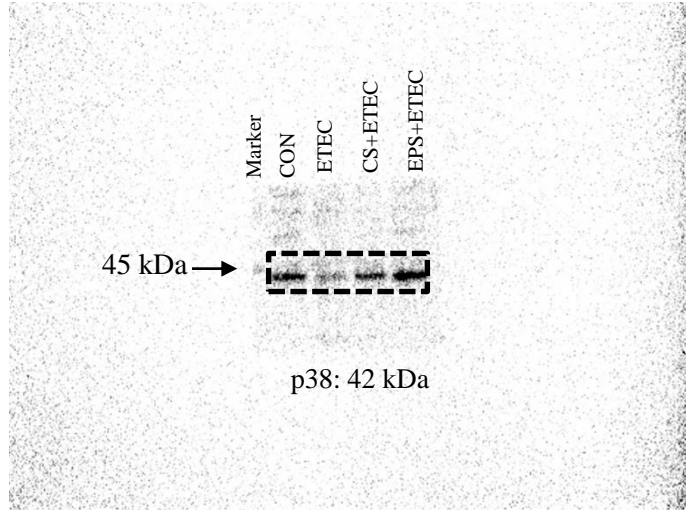
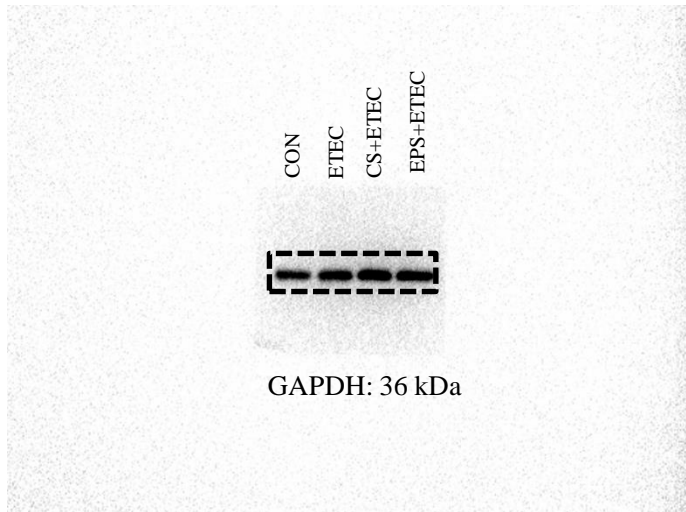
Results of three independent experiments

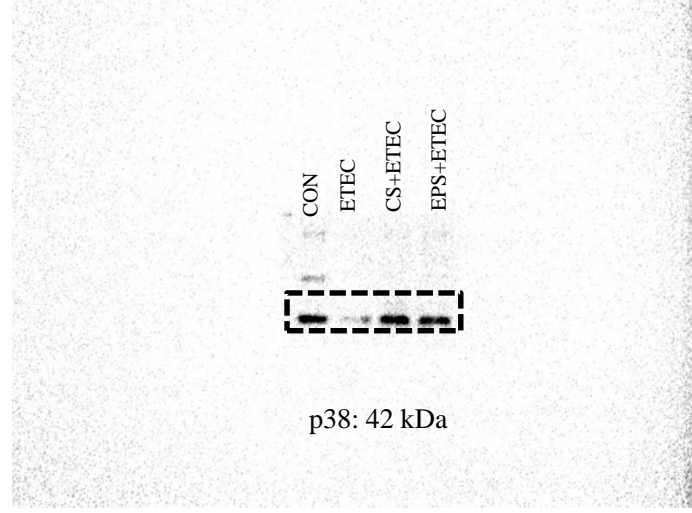
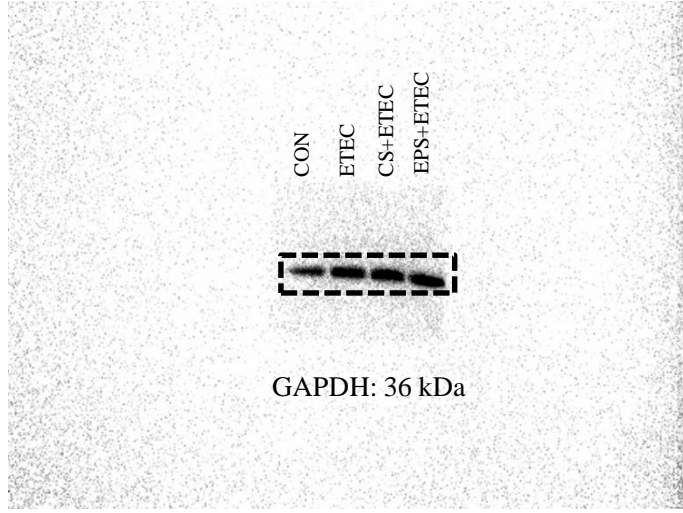


The following is the original plot of the above bands

1







p-p38

