

## Supplementary Information

### **Fucoxanthin alleviates lipopolysaccharide-induced intestinal barrier injury in mice**

Lei Du <sup>a, b#</sup>, Chen Chen <sup>b#</sup>, Yu-Hong Yang <sup>c</sup>, Yan Zheng <sup>d</sup>, Hui Li <sup>a, b</sup>, Zi-Jian Wu <sup>a, b</sup>, Hao Wu <sup>a, b</sup>, Kazuo Miyashita <sup>e</sup>, Guo-Hai Su <sup>d\*</sup>

<sup>a</sup> Research Center of Translational Medicine, Jinan Central Hospital, Shandong University, No.105 Jiefang Road, Jinan, Shandong, 250013, China.

<sup>b</sup> Department of Nutrition and Food Hygiene, School of Public Health, Cheeloo College of Medicine, Shandong University, No.44 Wenhuxi Road, Jinan, Shandong, 250012, China.

<sup>c</sup> School of Food Science and Engineering, Qilu University of Technology (Shandong Academy of Sciences), No.3501 Daxue Road, Jinan, Shandong, 250353, China.

<sup>d</sup> Research Center of Translational Medicine, Central Hospital Affiliated to Shandong First Medical University, No.105 Jiefang Road, Jinan, Shandong, 250013, China.

<sup>e</sup> Center for Industry-University Collaboration, Obihiro University of Agriculture and Veterinary Medicine, Inada-cho, Obihiro, Hokkaido, 080-8555, Japan.

<sup>#</sup> These authors contributed equally to this work.

<sup>\*</sup> Correspondence author:

Prof. Guo-Hai Su, E-mail address: gttstg@163.com.

**Table S1** Colonic histopathology scoring criteria.

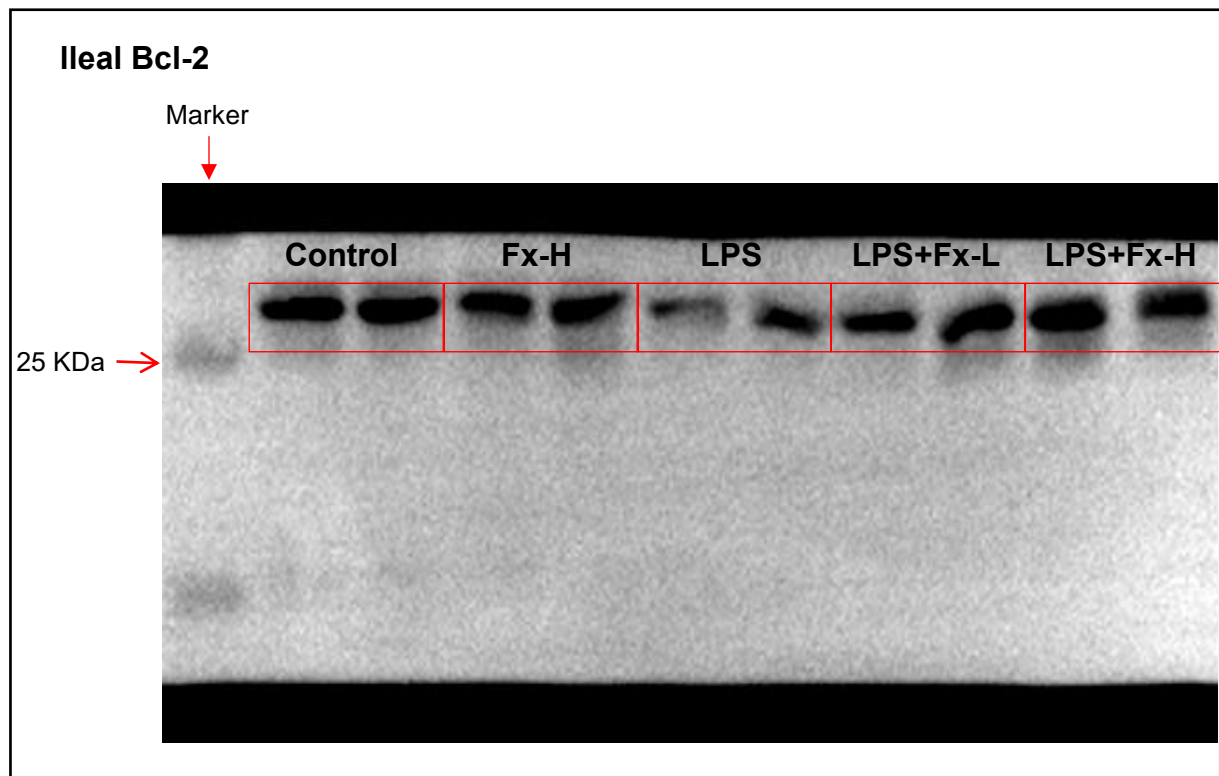
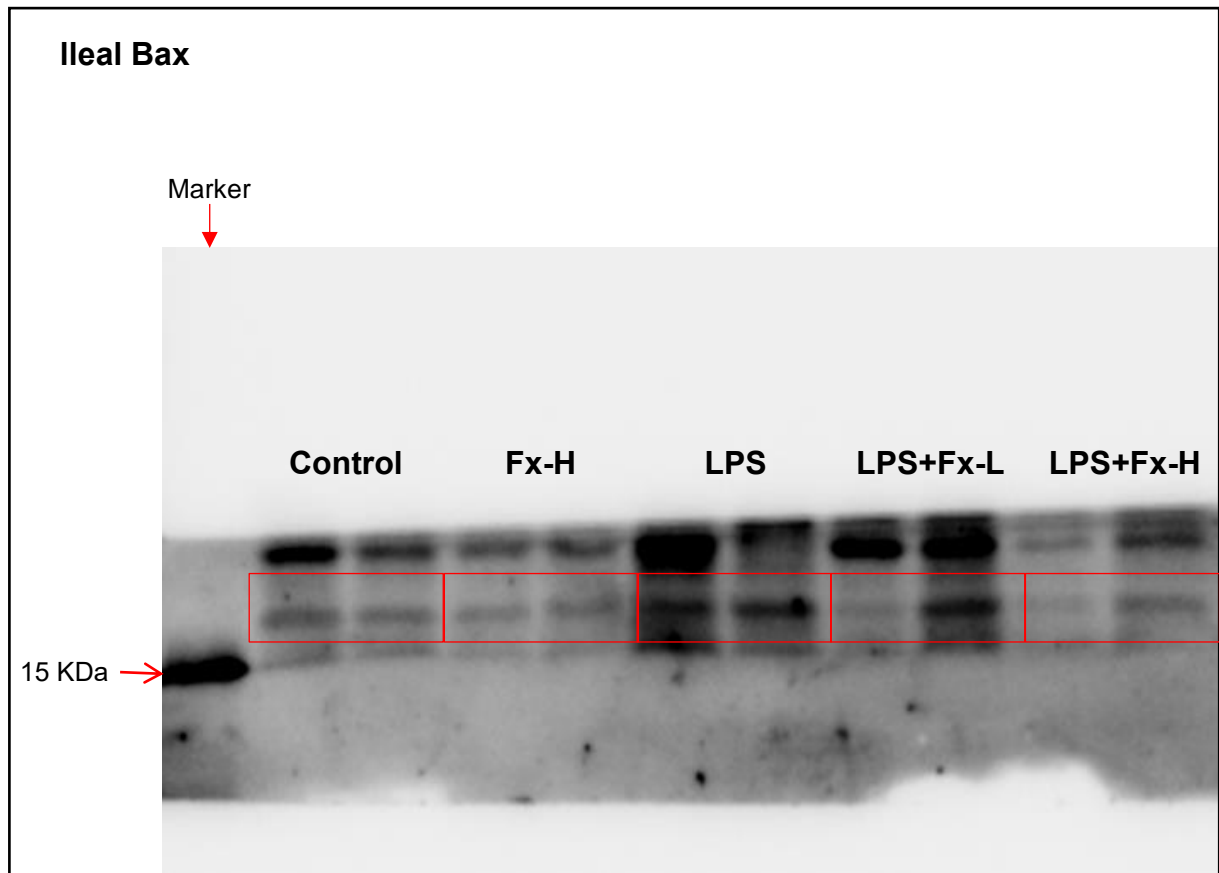
**Figure S1** Original Western blotting images presented in this study.

**Table S1** Colonic histopathology scoring criteria

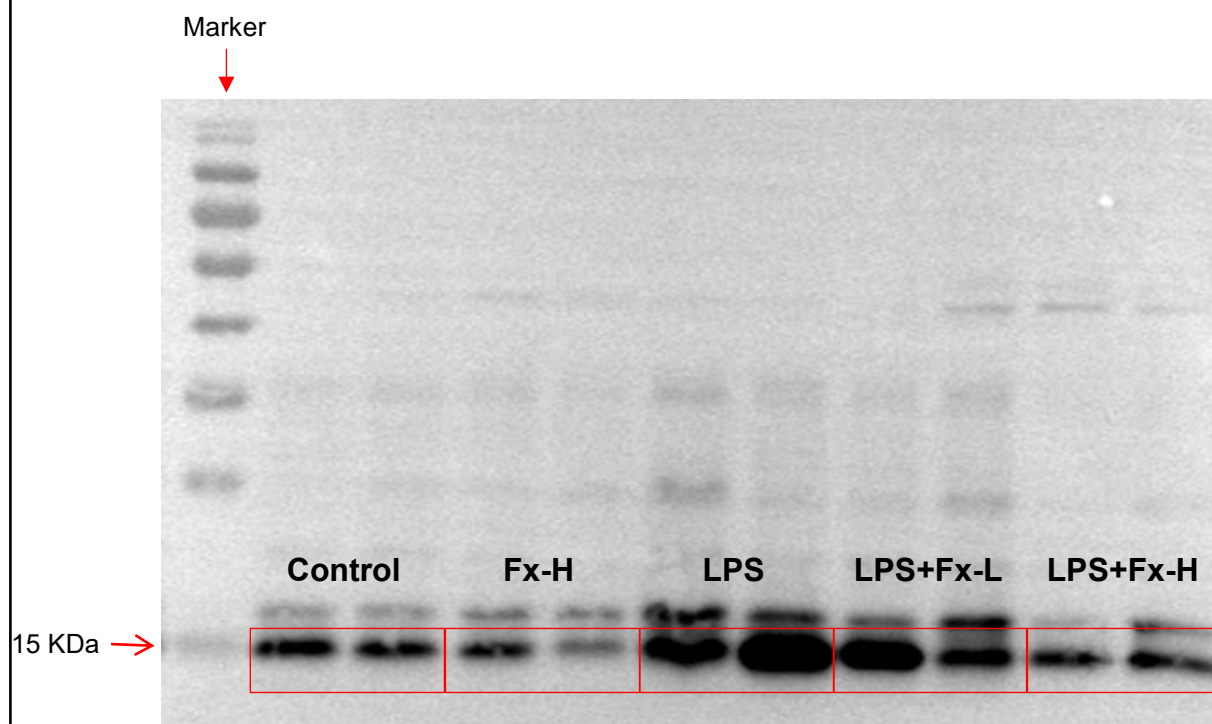
Score	Inflammation	Mucosal damage	Crypt damage	Range of lesions (%)
0	None	None	None	0
1	Mild	Mucous layer	1/3	1~25
2	Moderate	Submucosa	2/3	26~50
3	Severe	Muscularis and serosa	100%	51~75
4	-	-	100%+epithelium loss	76~100

**Figure S1** Original Western blotting images presented in this study.

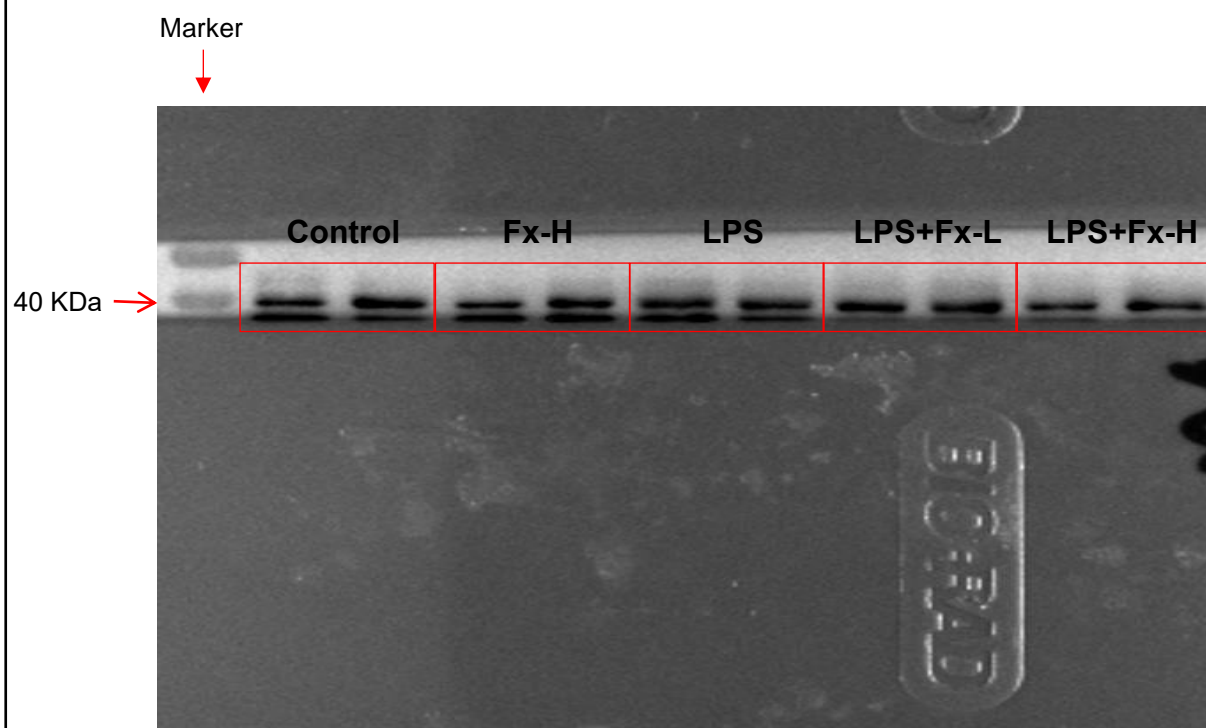
Uncropped blots for **Figure 2E**



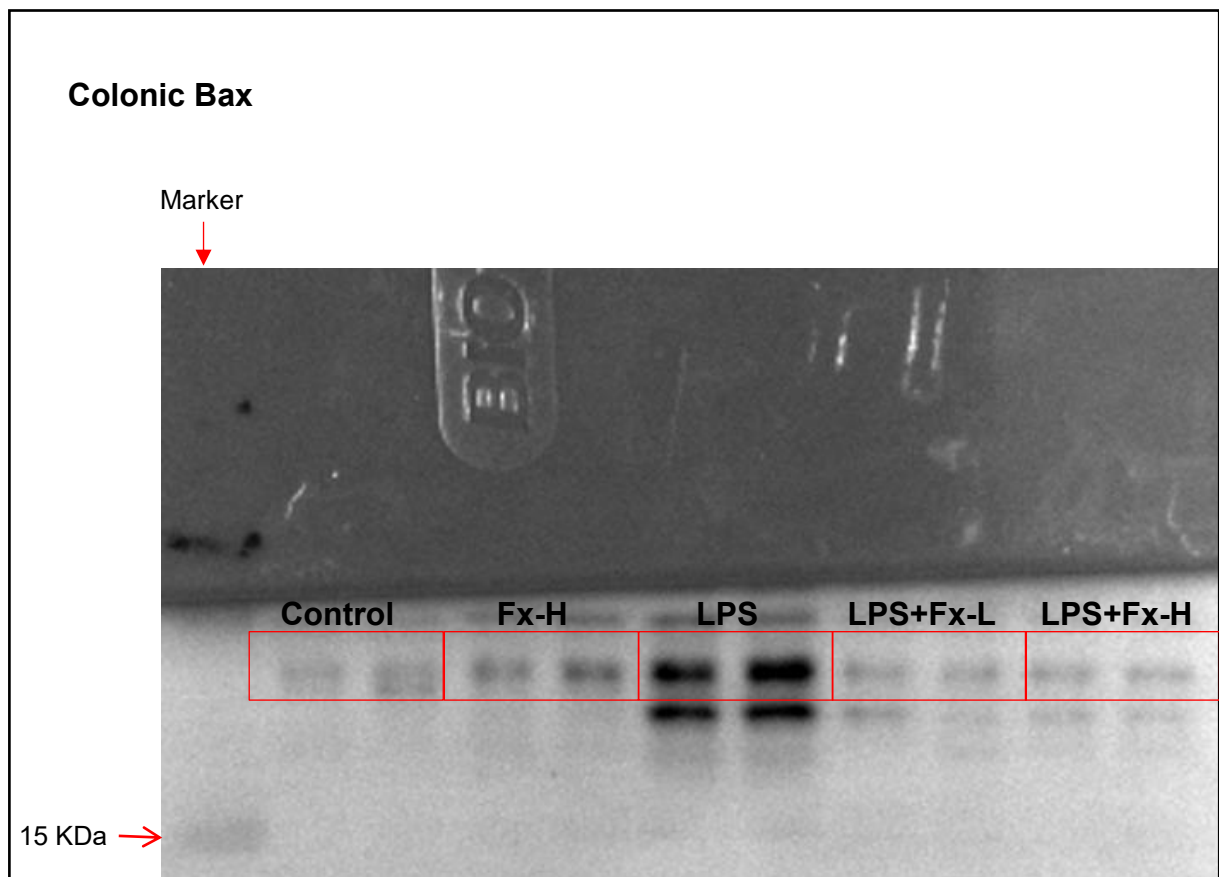
### Ileal cleaved caspase-3



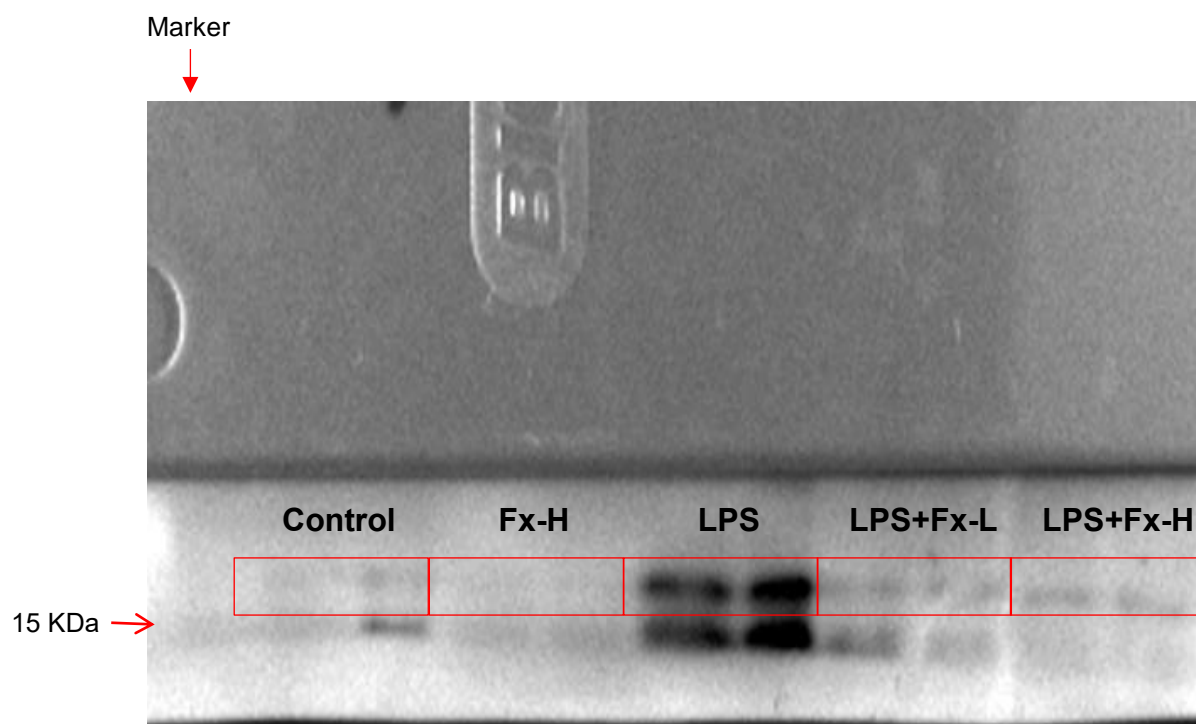
### Ileal GAPDH



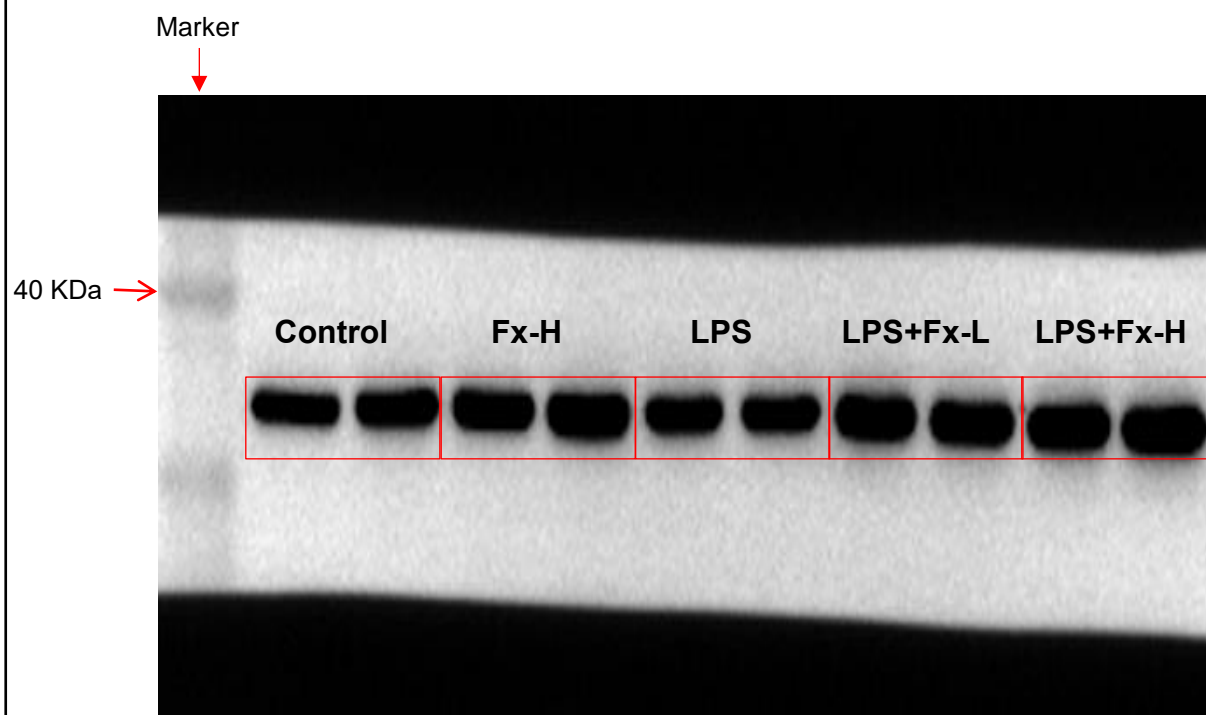
Uncropped blots for **Figure 2J**



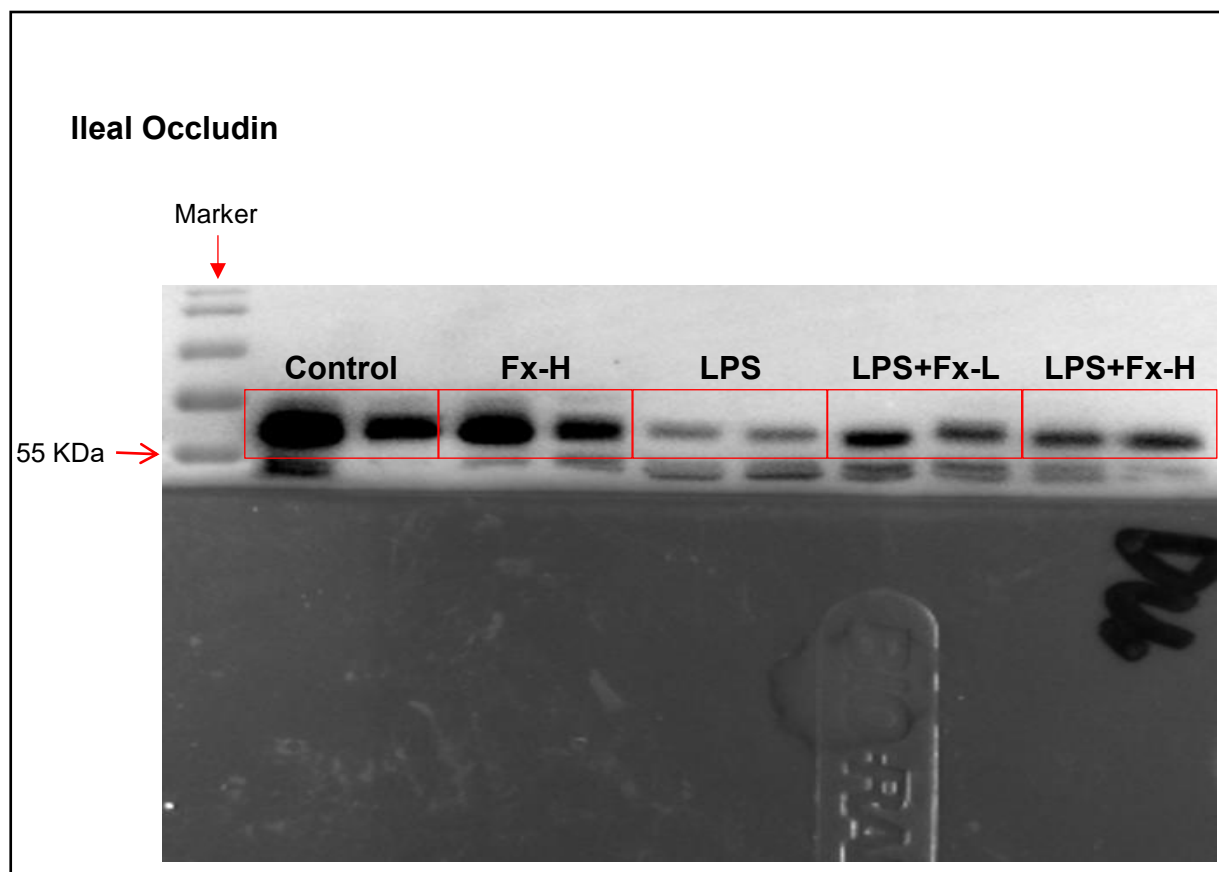
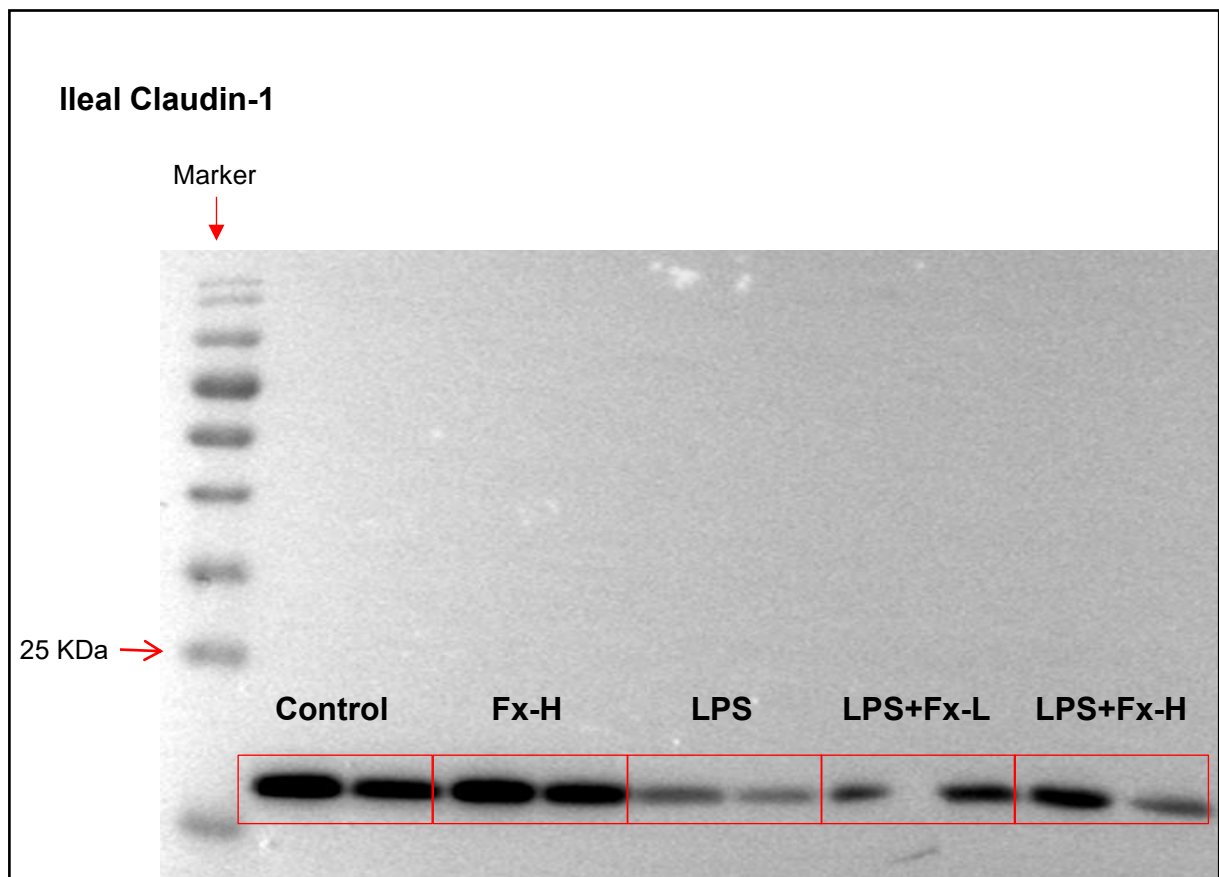
### Colonic cleaved caspase-3



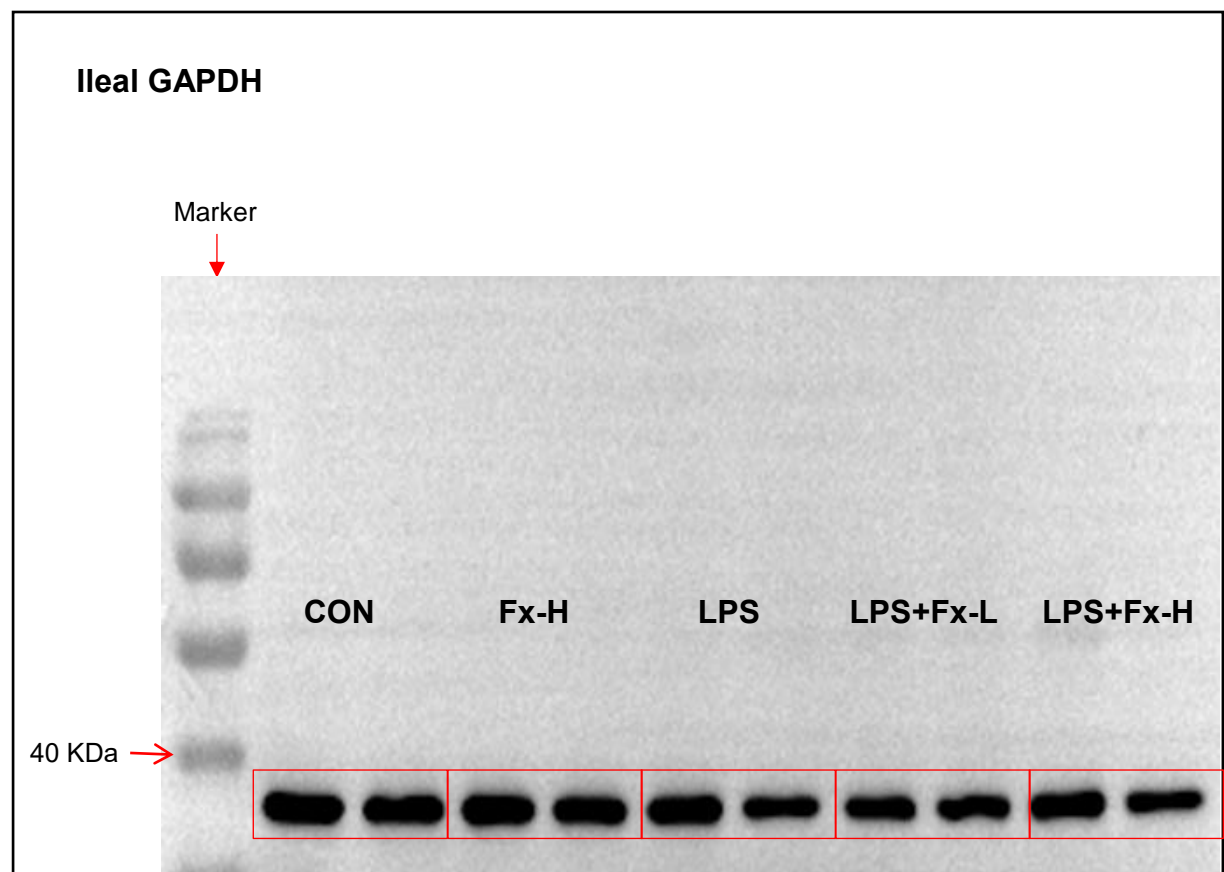
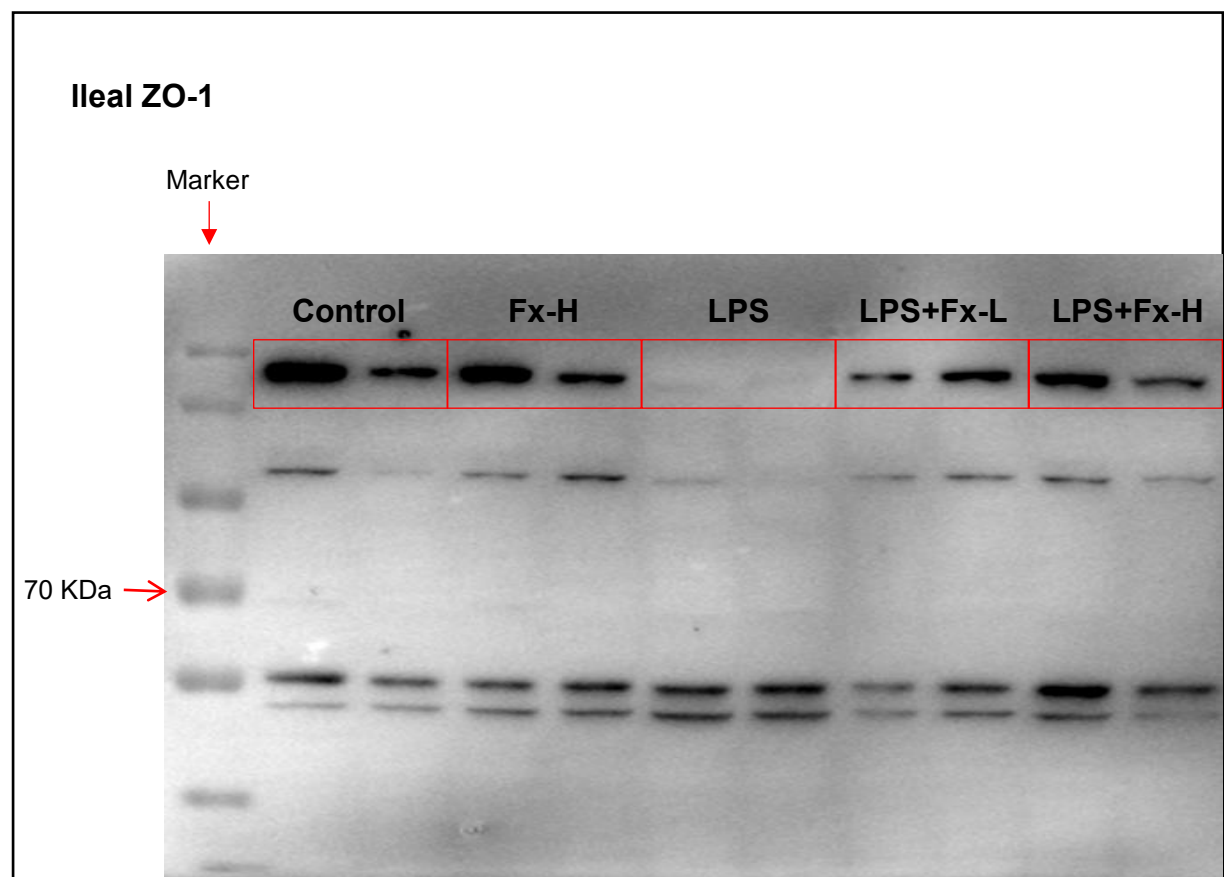
### Colonic GAPDH



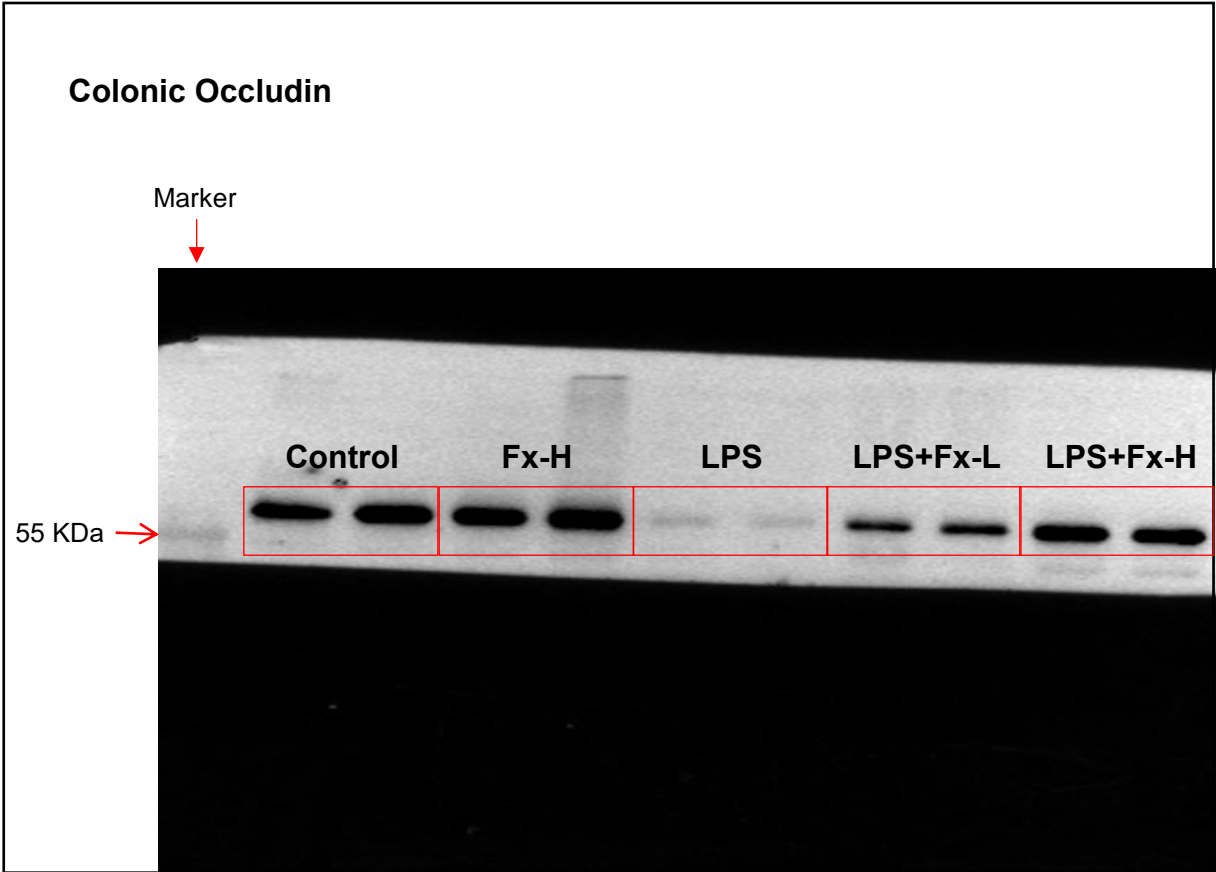
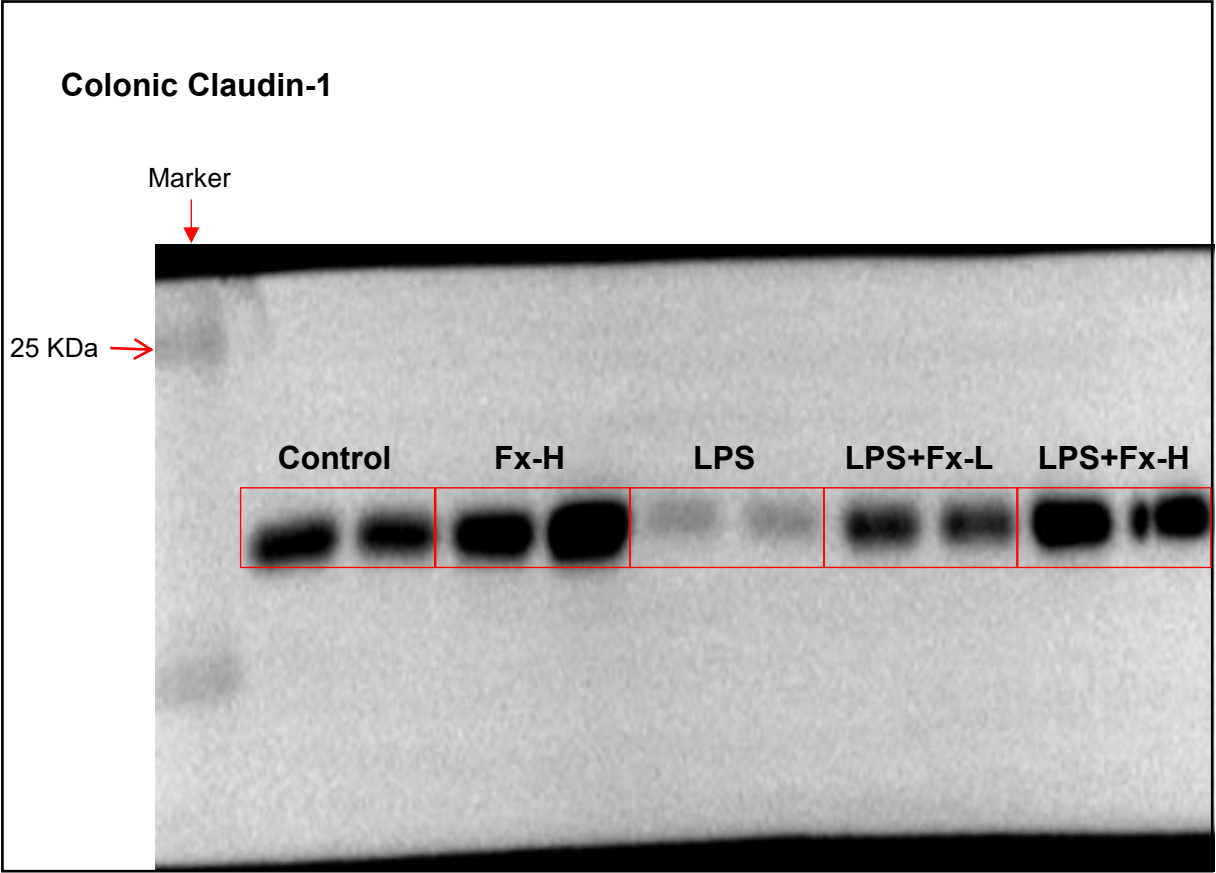
Uncropped blots for **Figure 3A**

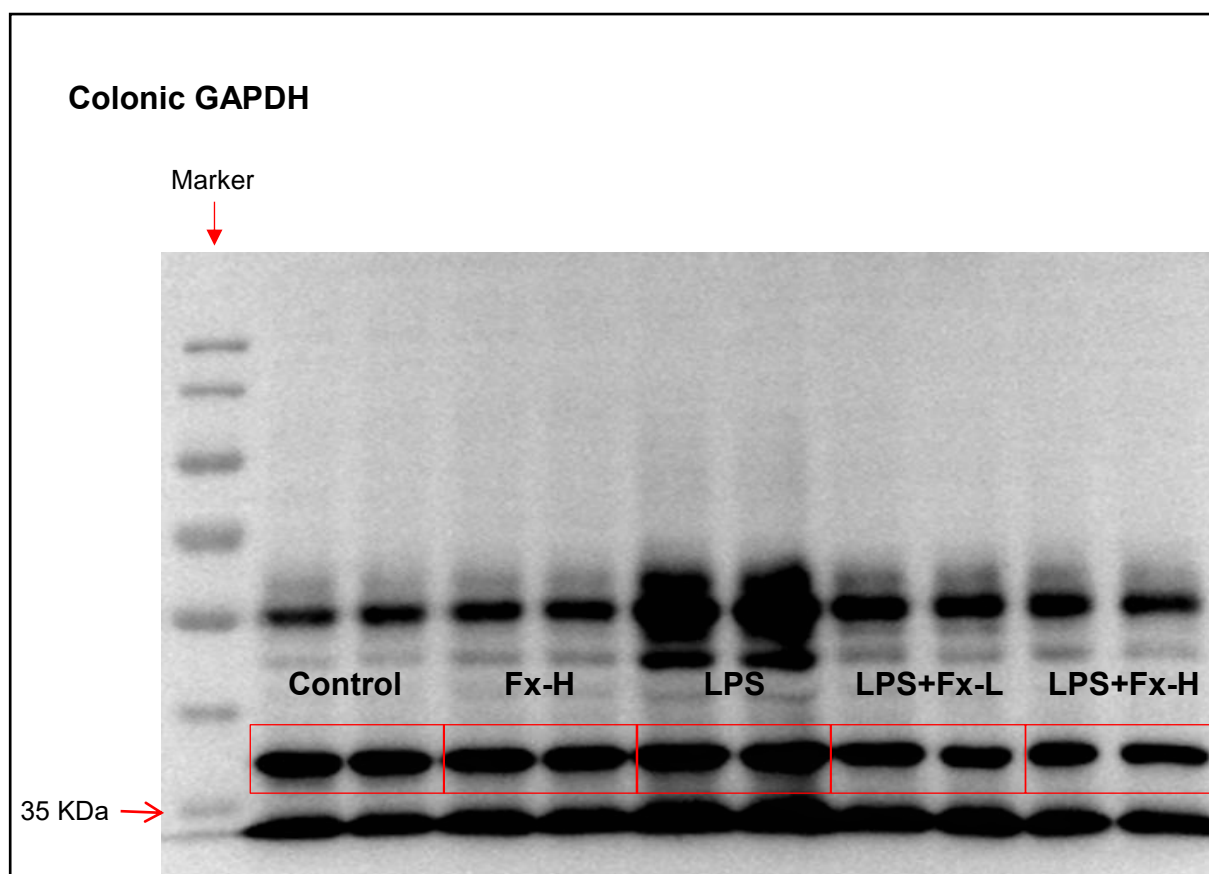
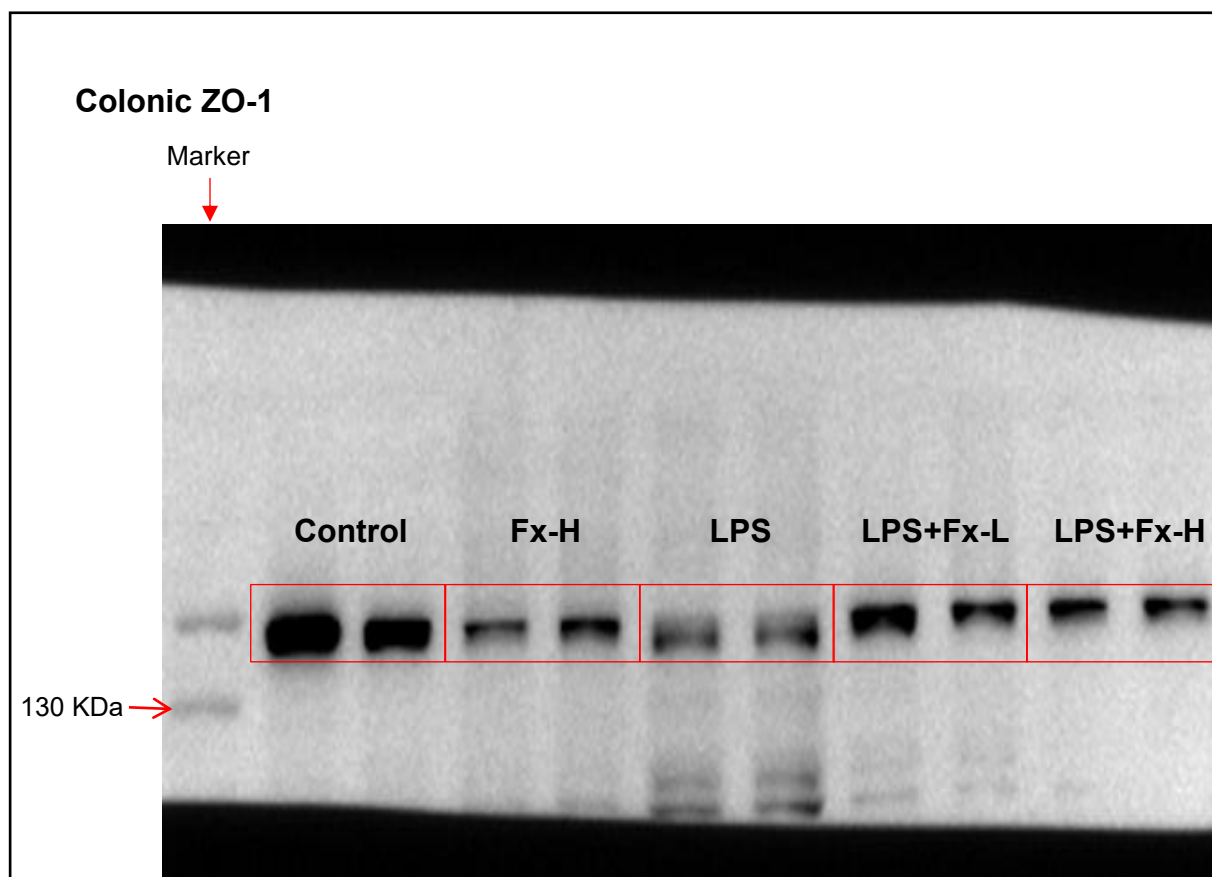




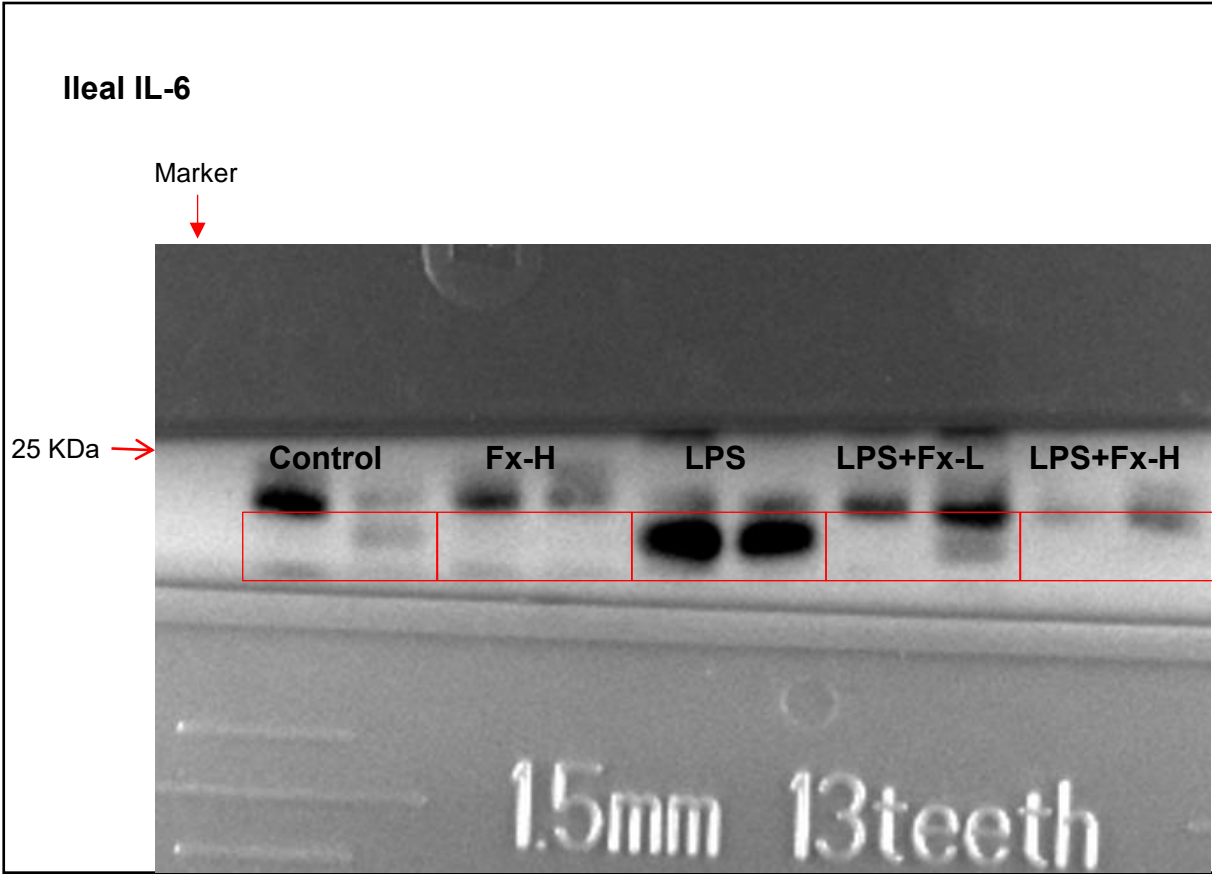


Uncropped blots for **Figure 3E**

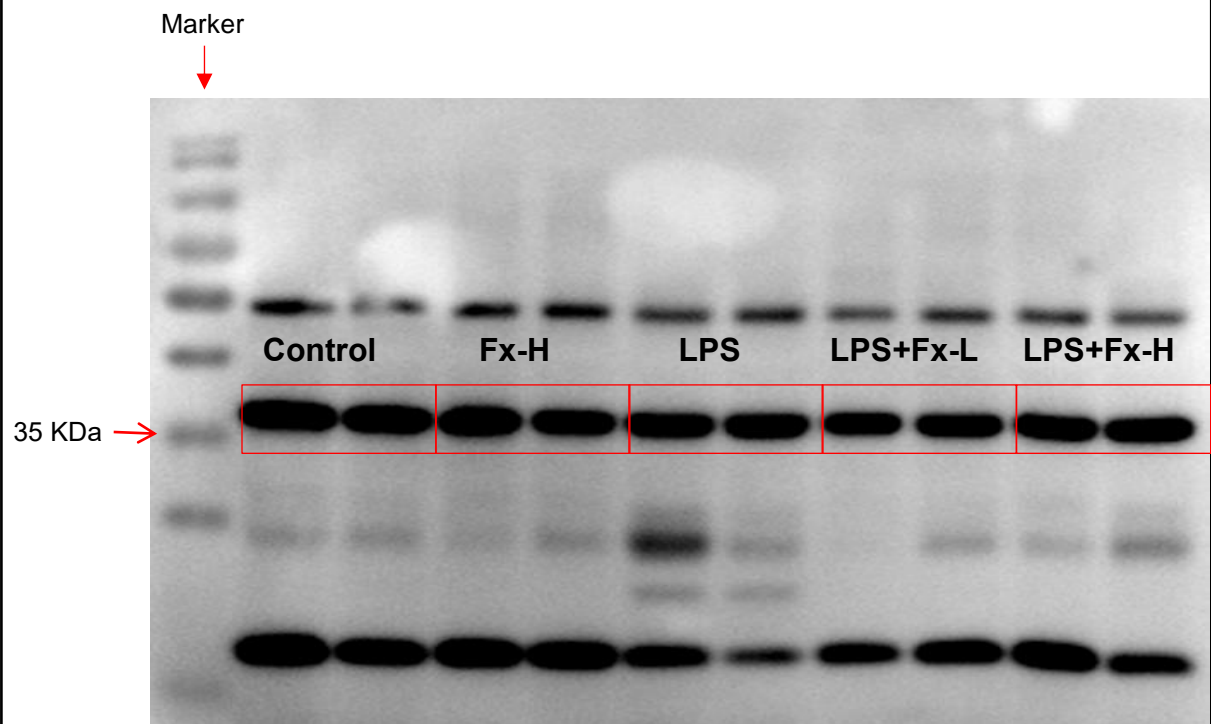




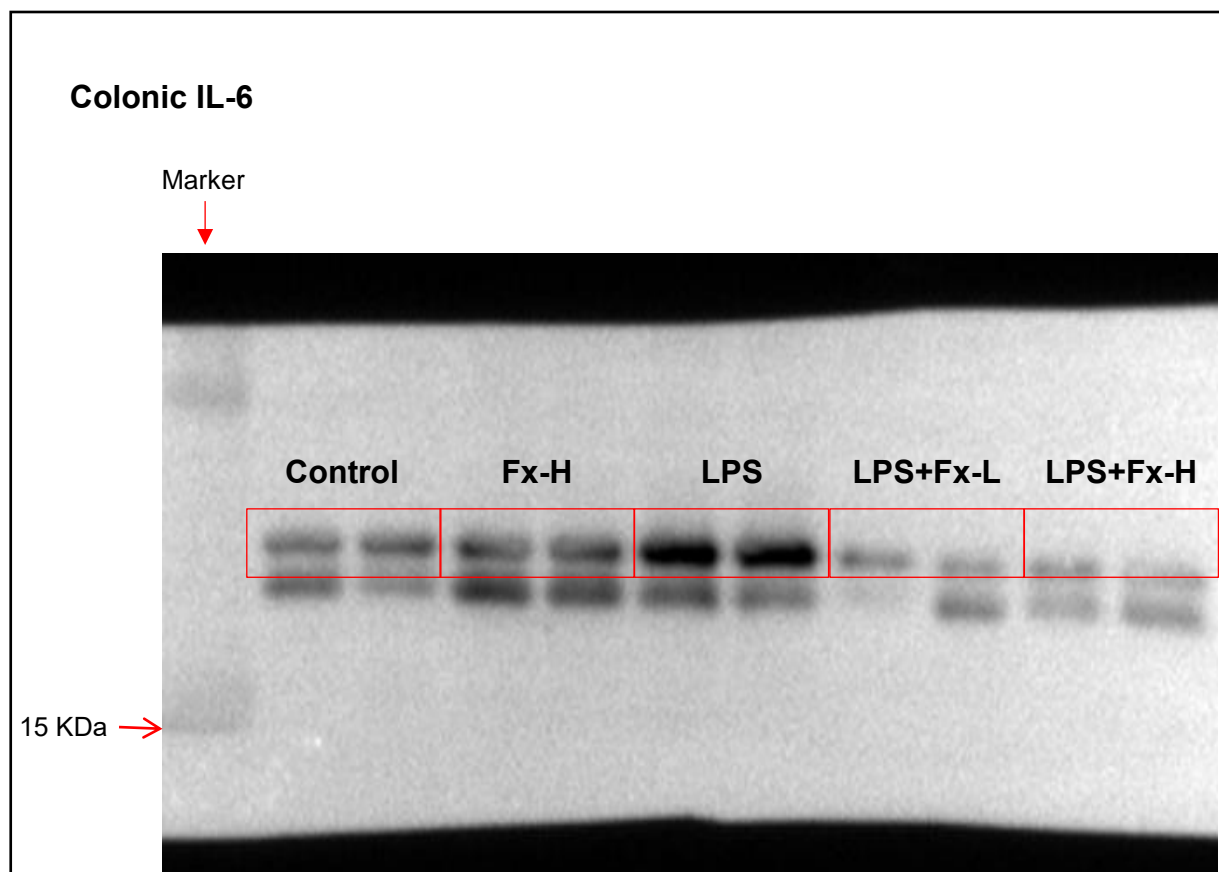
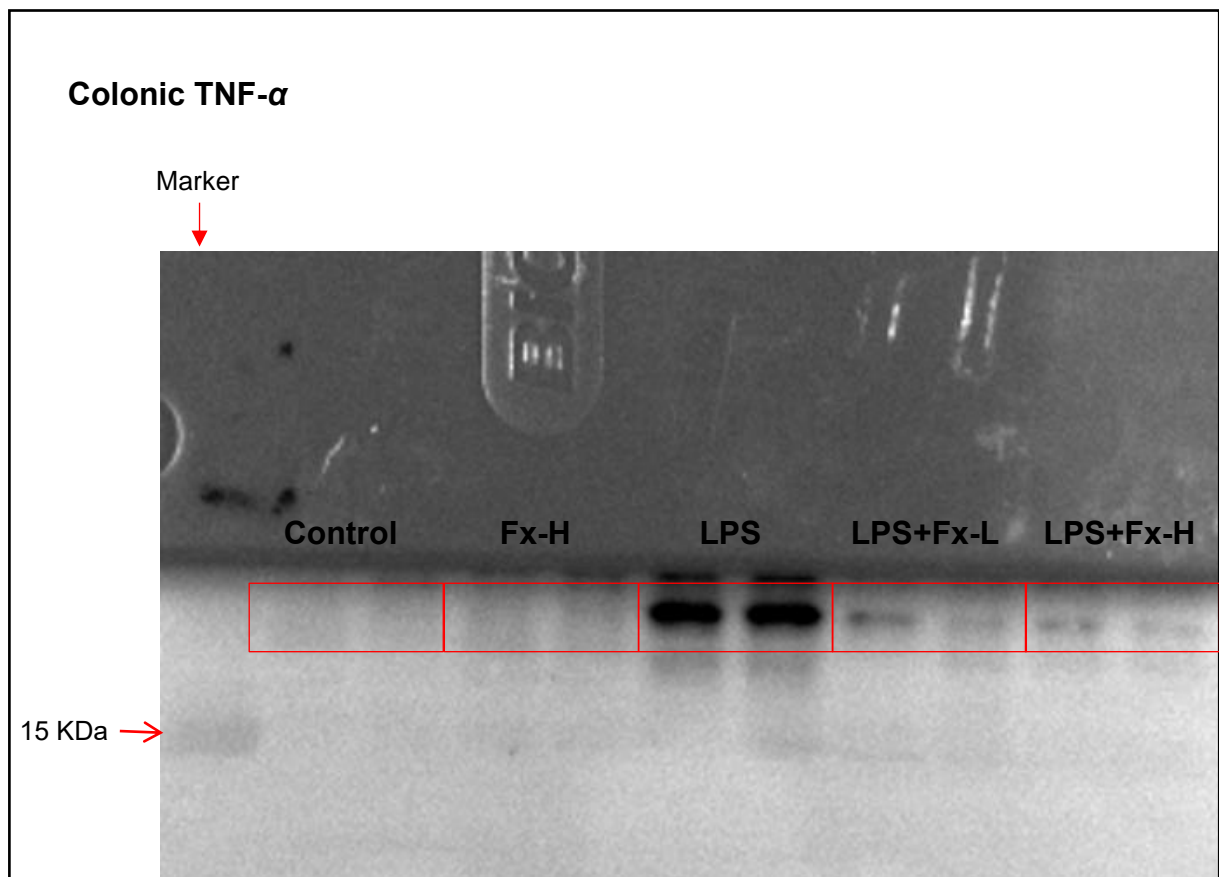
Uncropped blots for **Figure 4F**



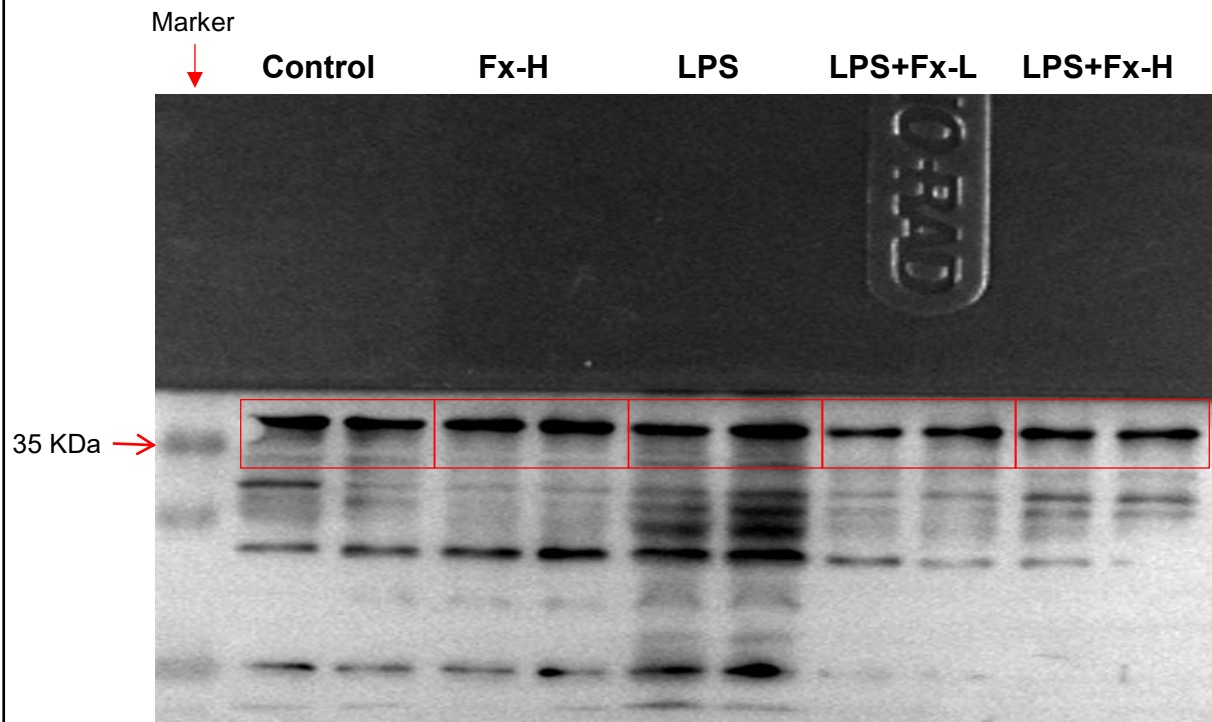
# Ileal GAPDH



Uncropped blots for **Figure 4I**

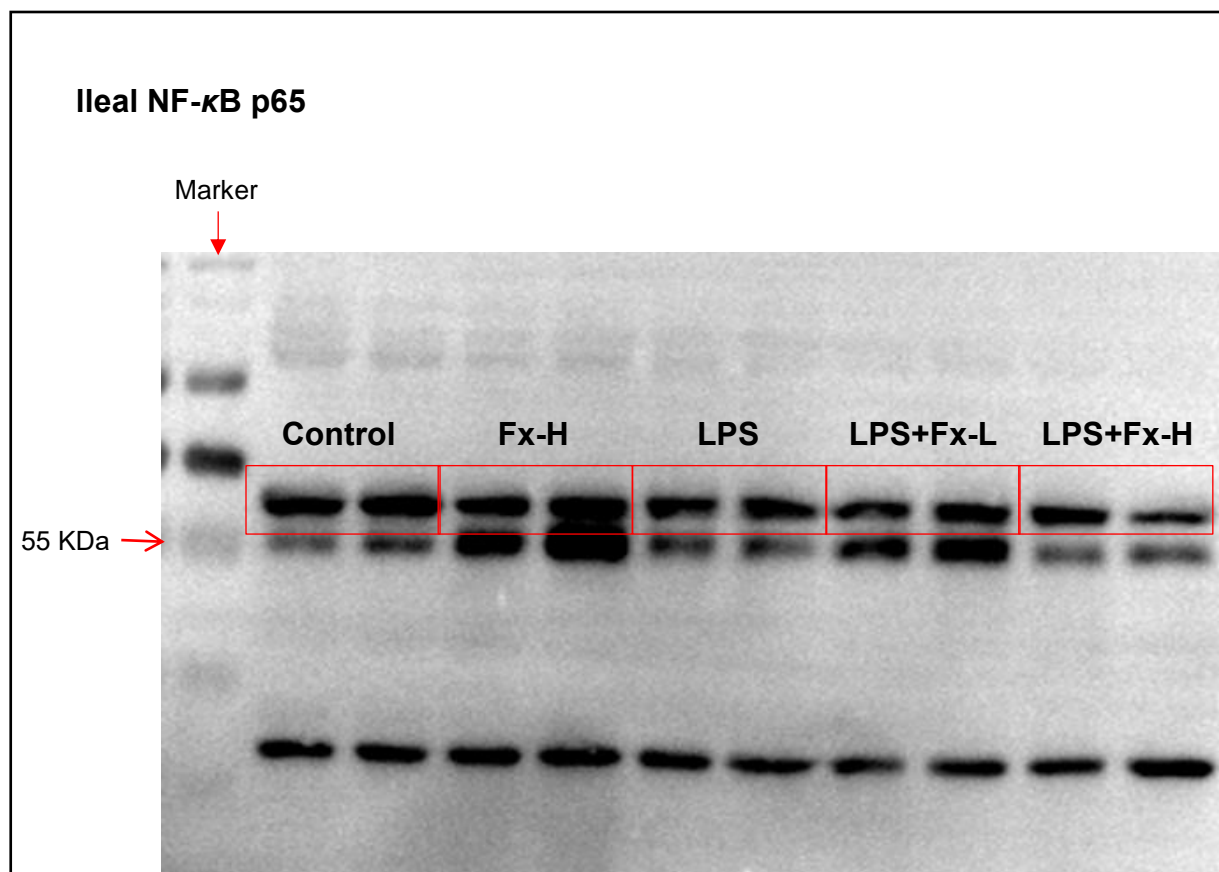
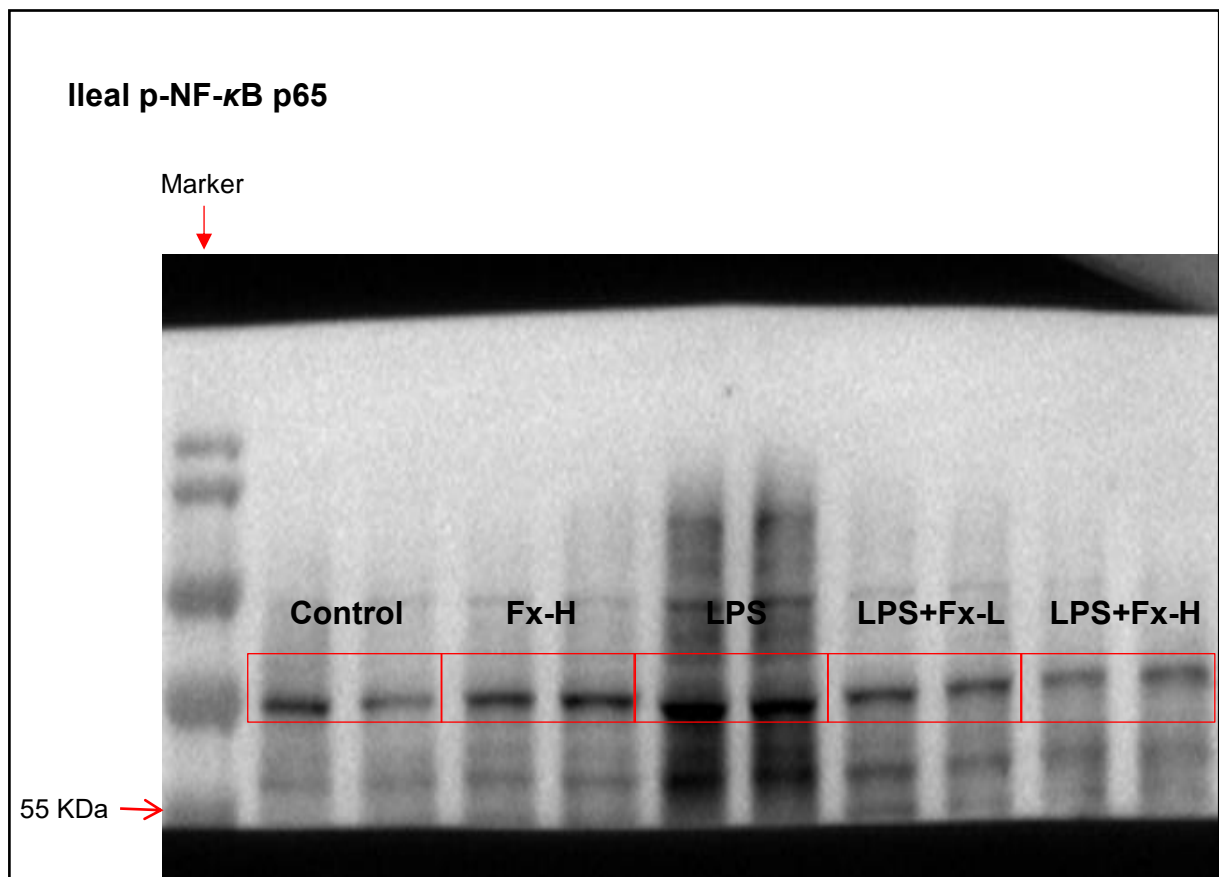


## Colonic GAPDH



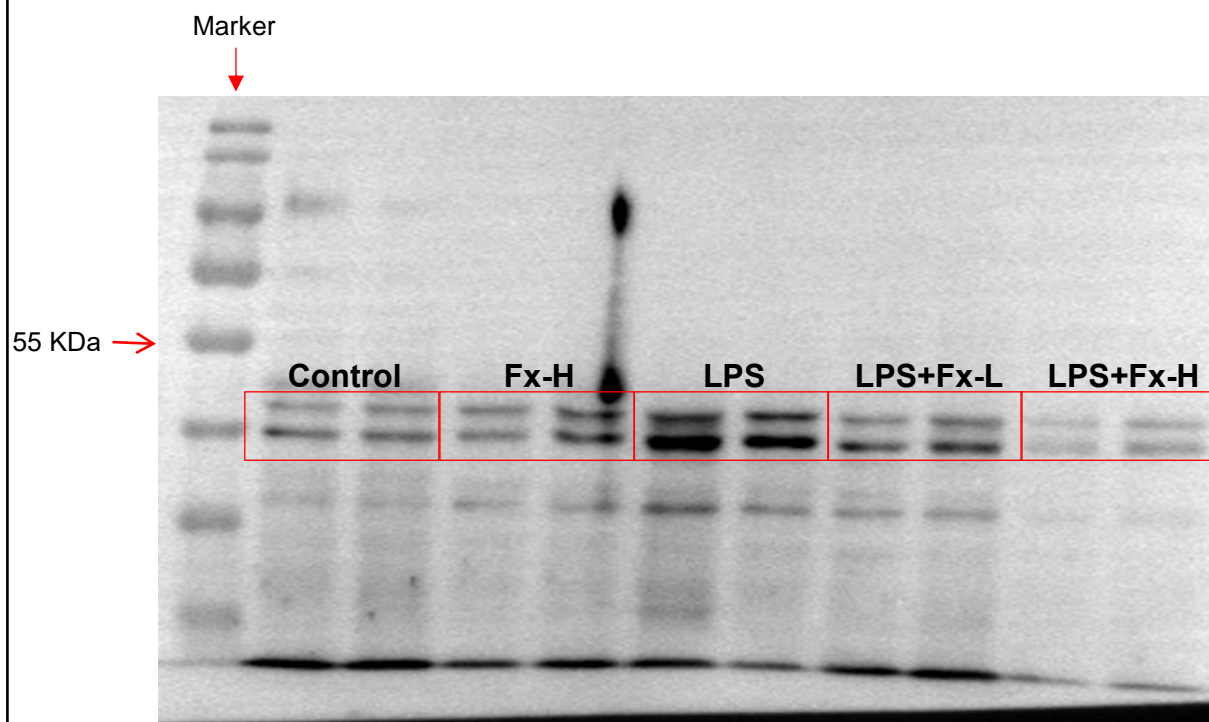


Uncropped blots for **Figure 5A**

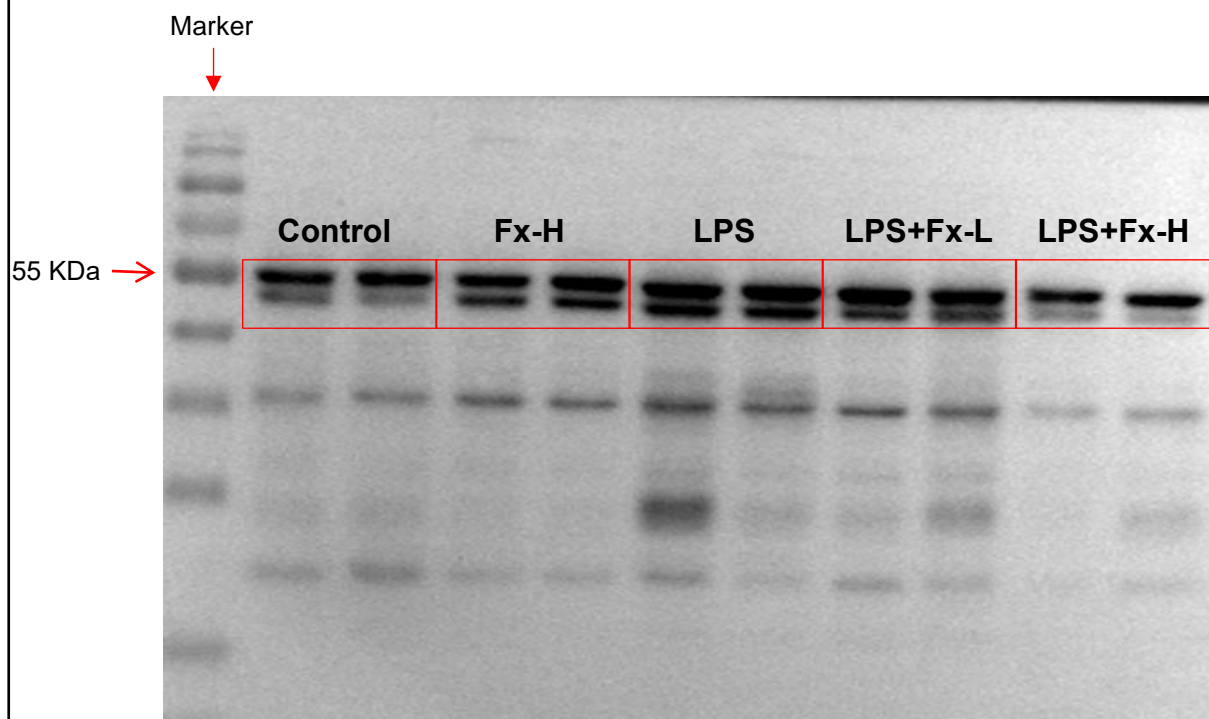




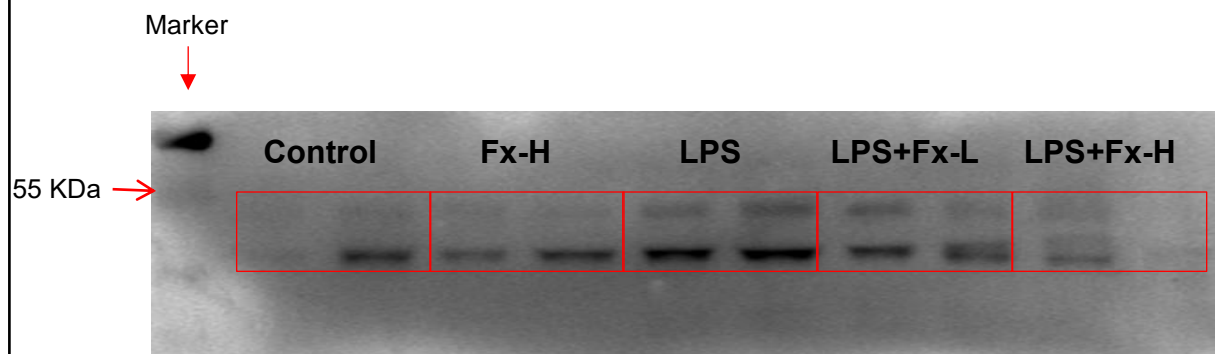
### Ileal p-ERK 1/2



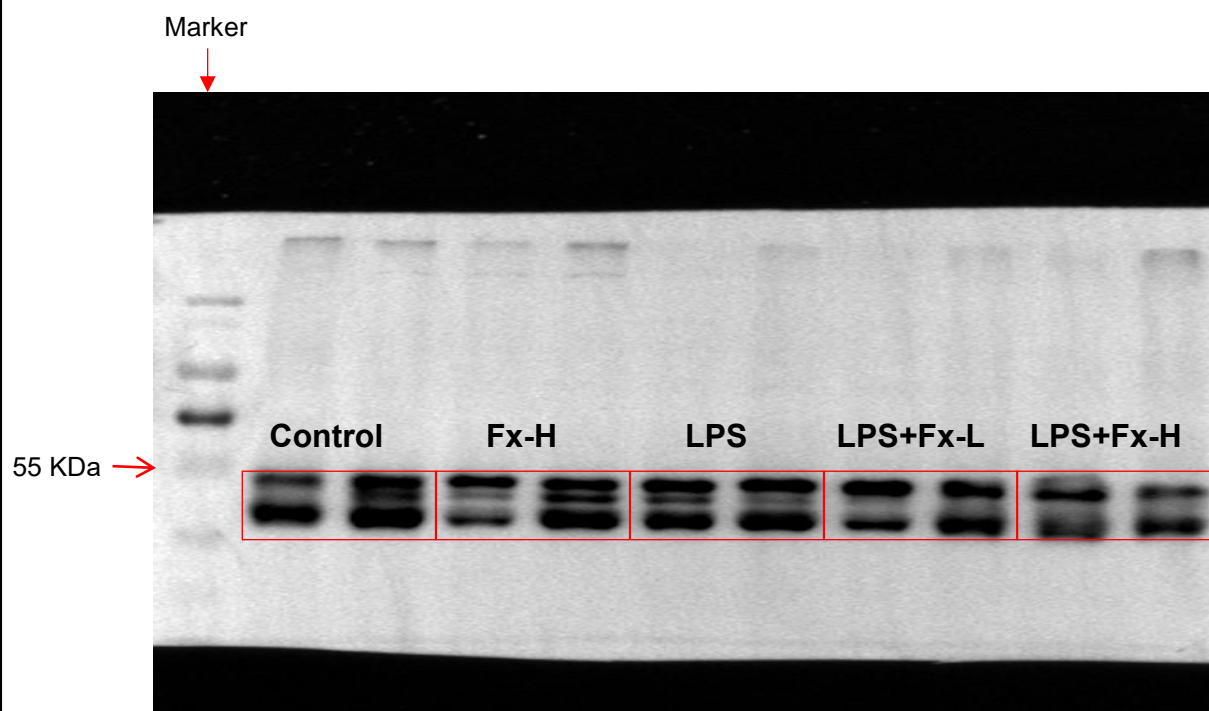
### Ileal ERK 1/2

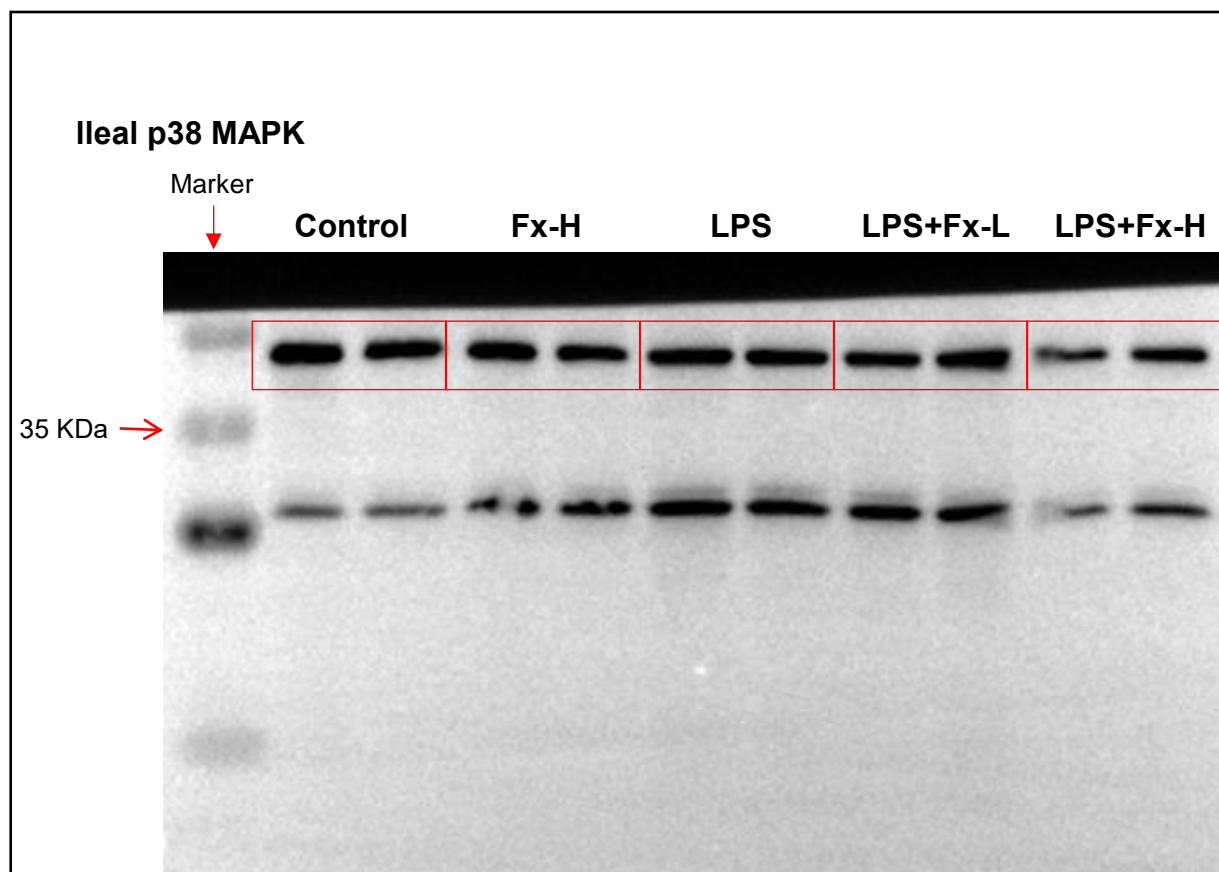
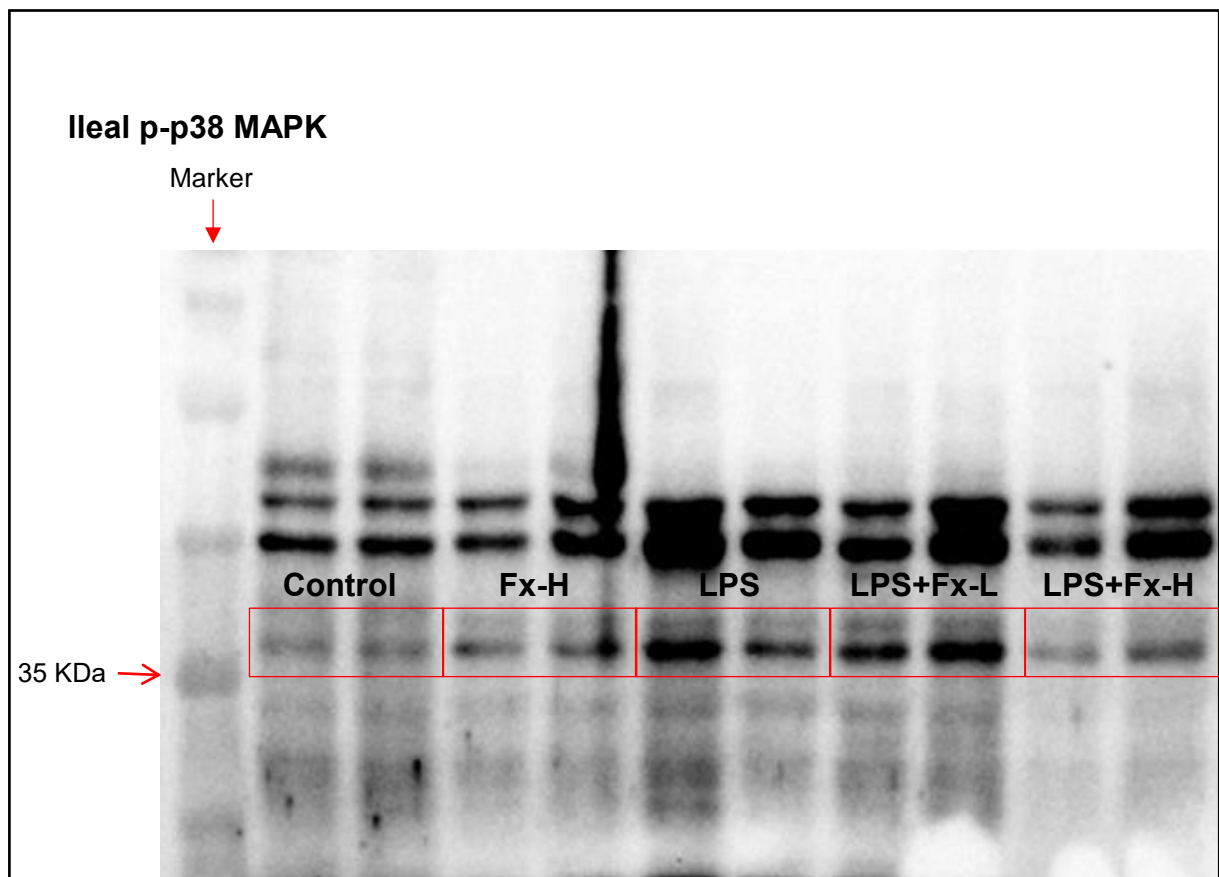


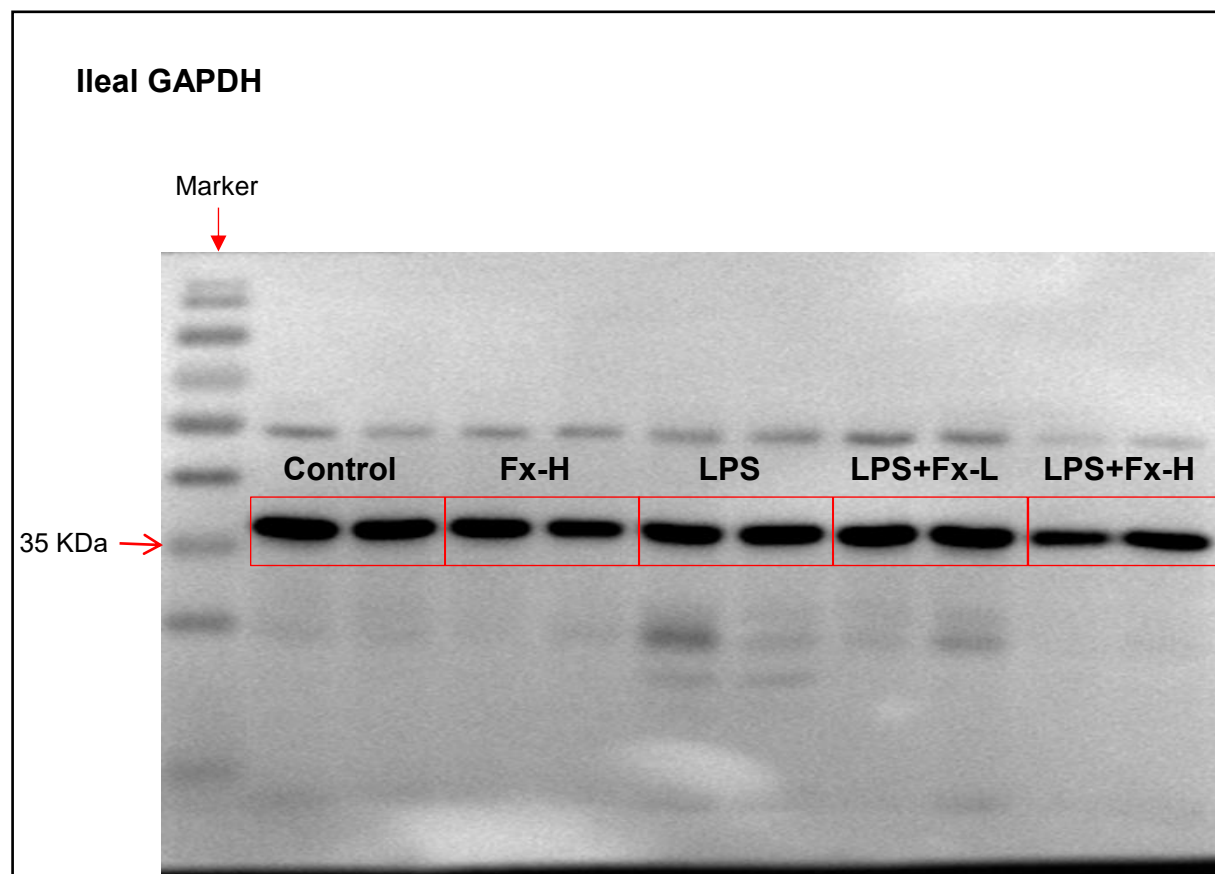
### Ileal p-JNK



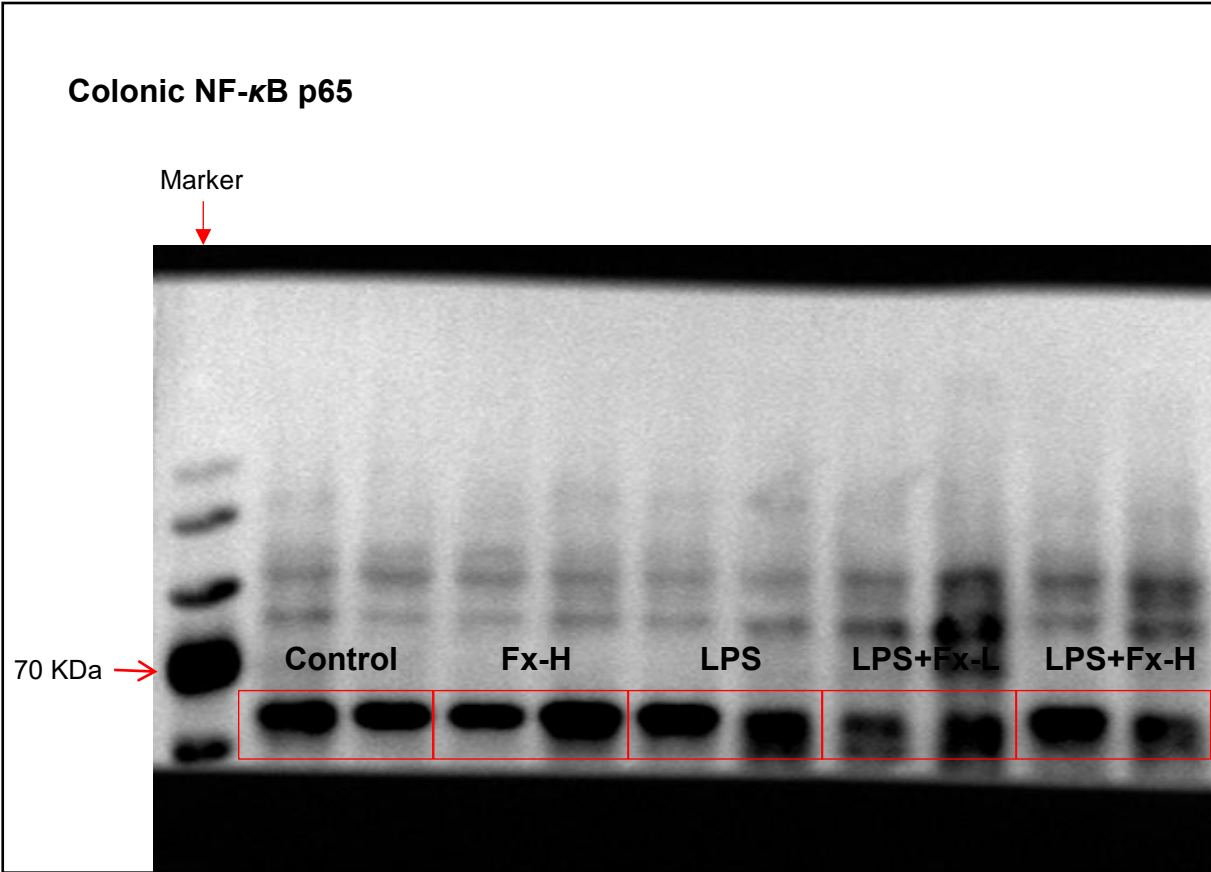
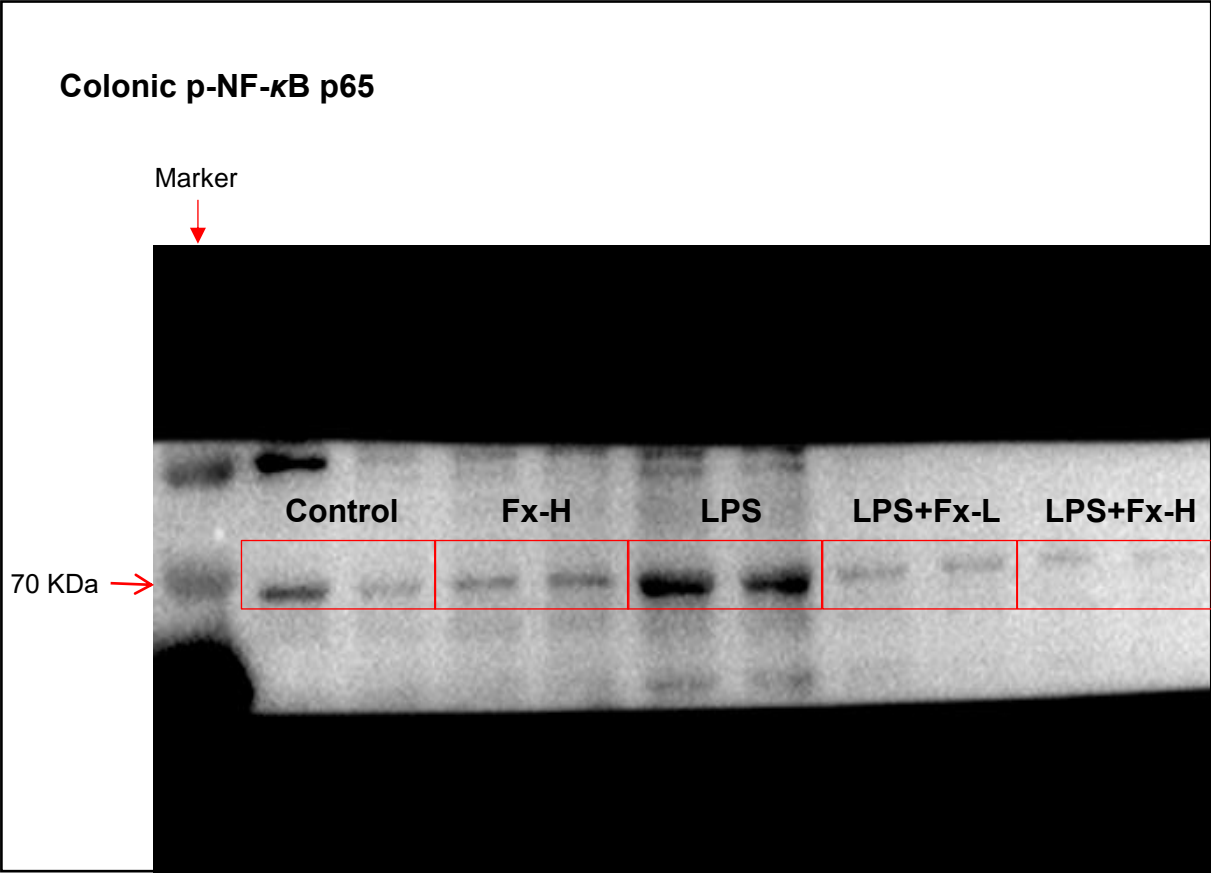
### Ileal JNK







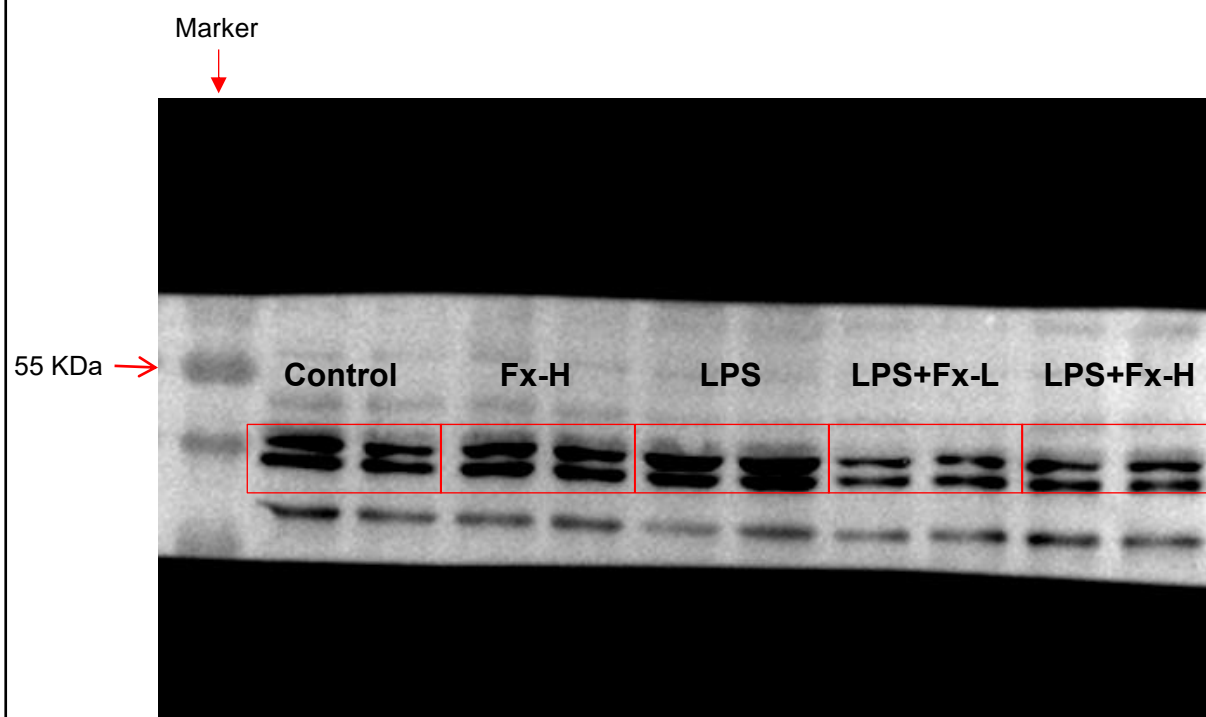
Uncropped blots for **Figure 5F**



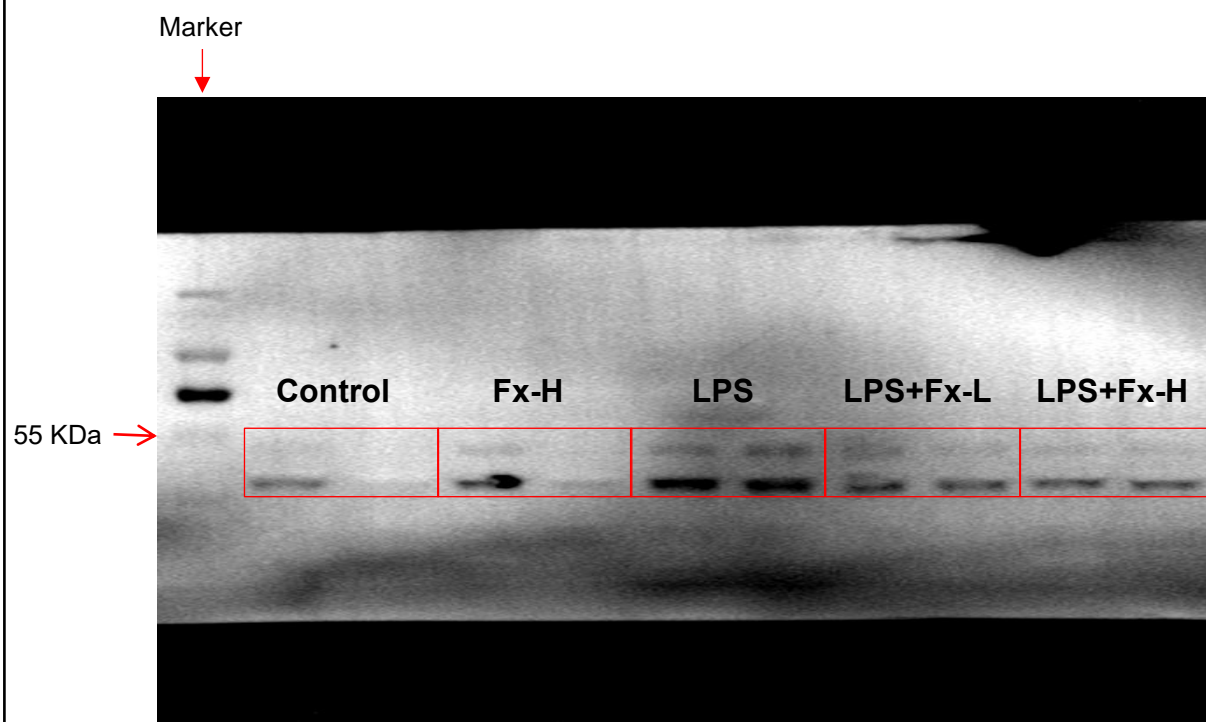
### Colonic p-ERK 1/2



### Colonic ERK 1/2



### Colonic p-JNK

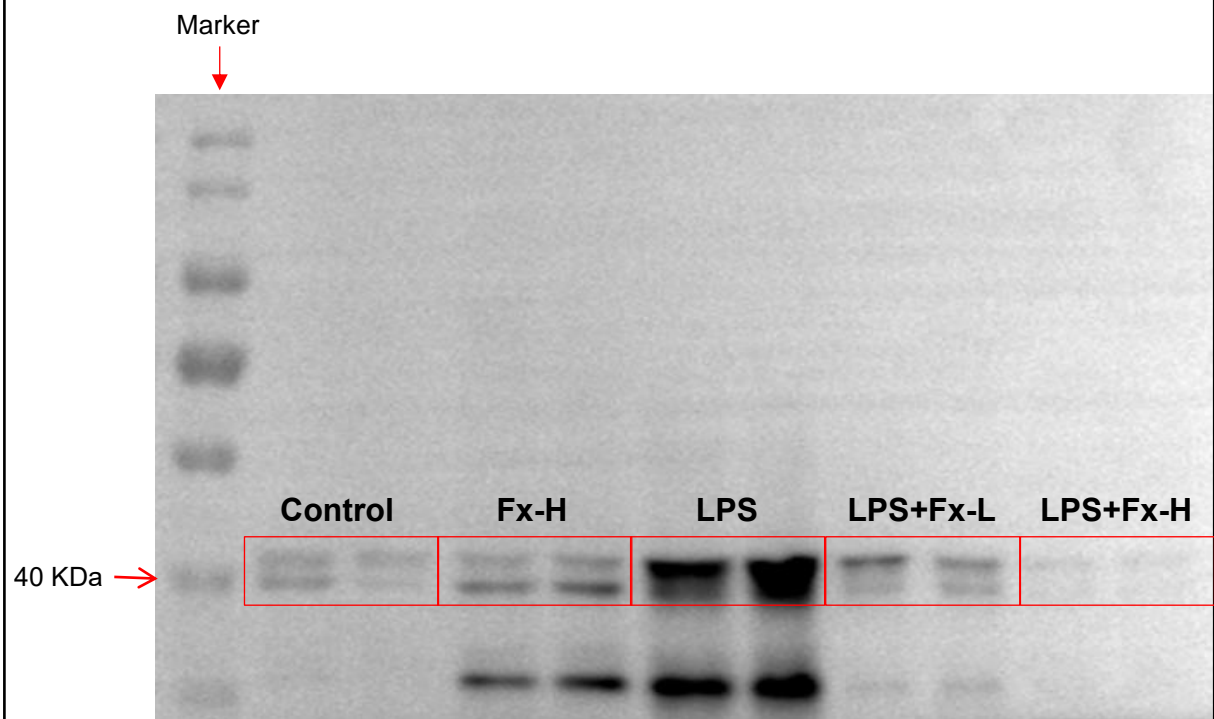


### Colonic JNK

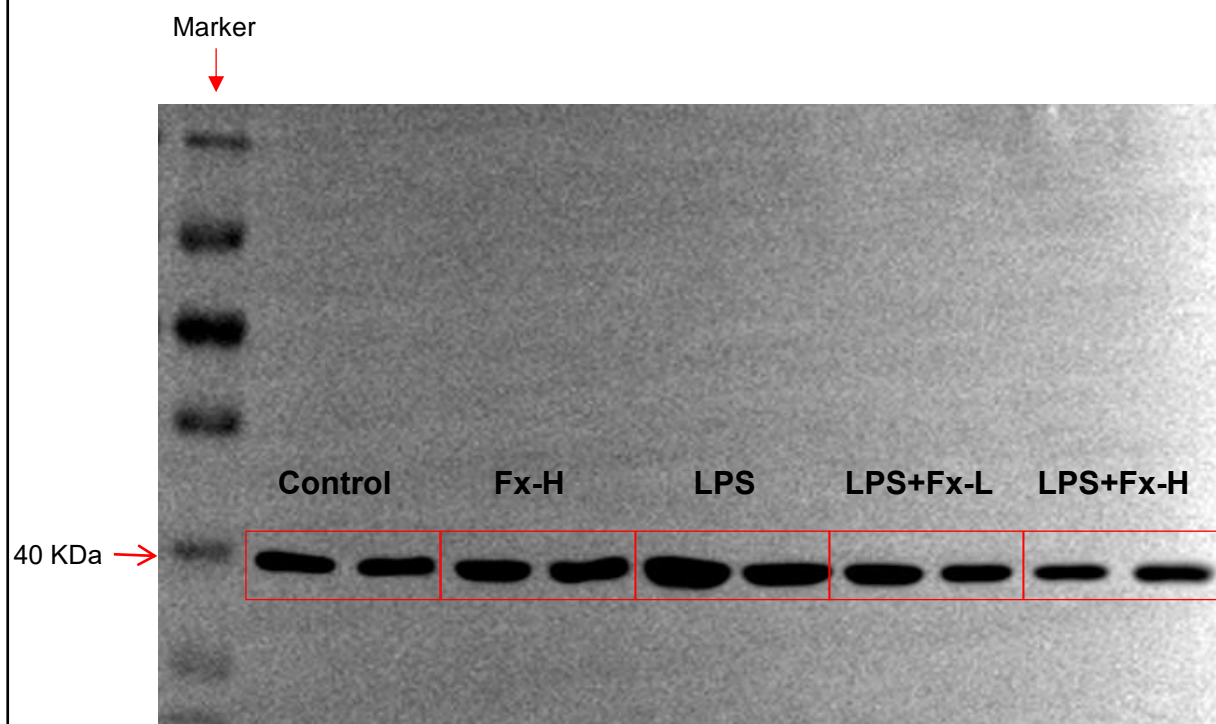




### Colonic p-p38 MAPK

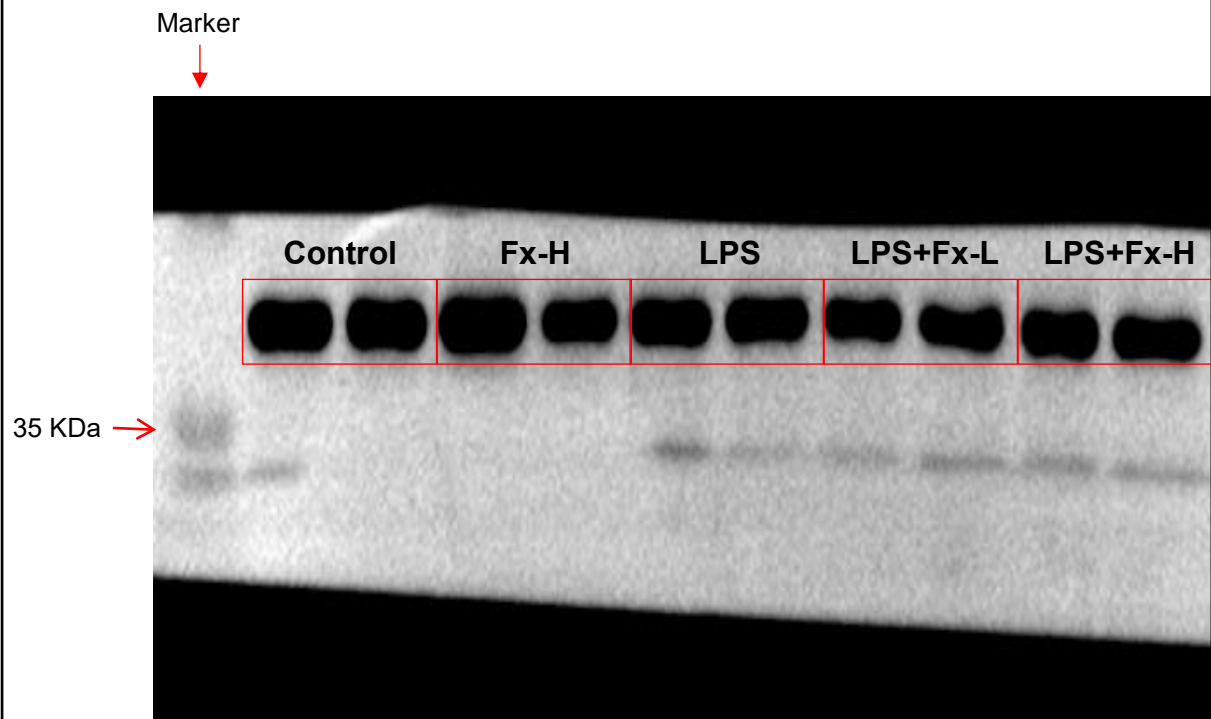


### Colonic p38 MAPK

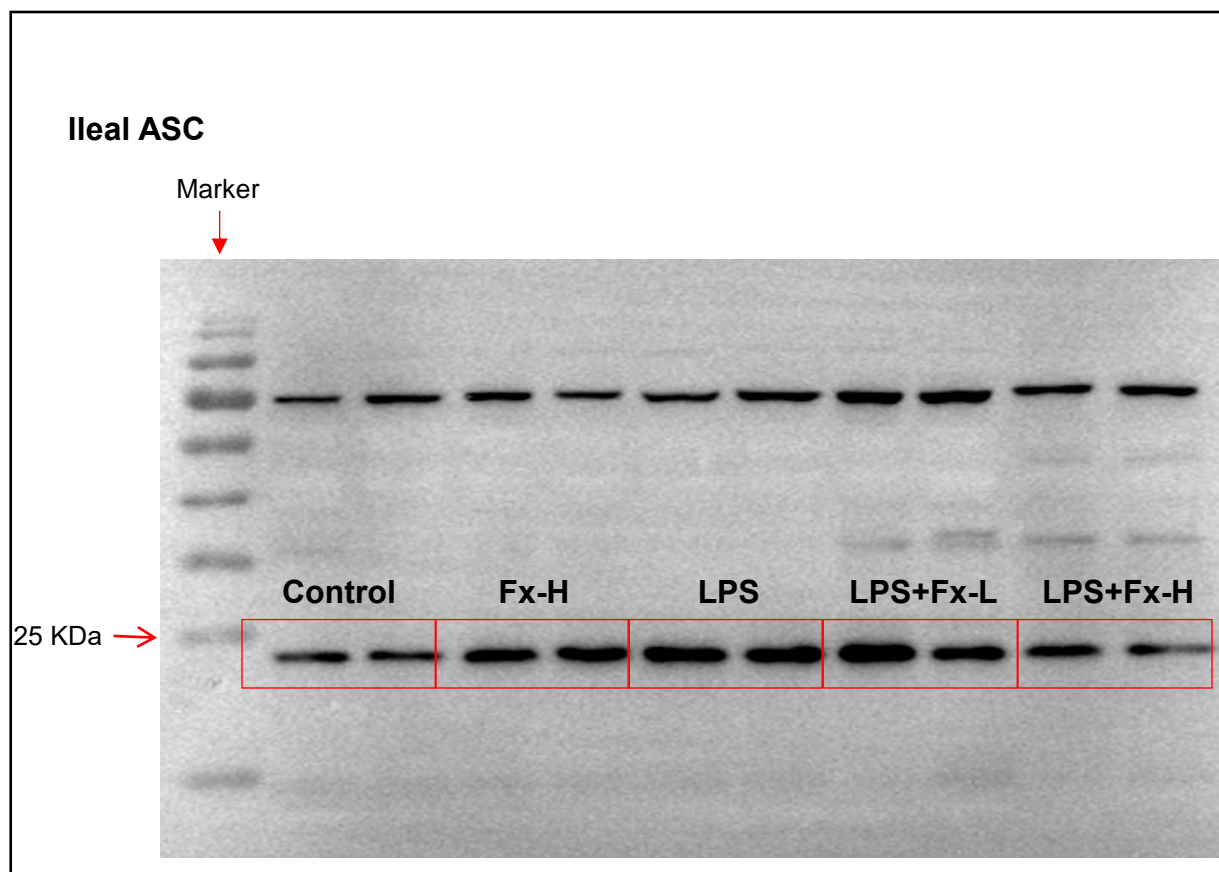
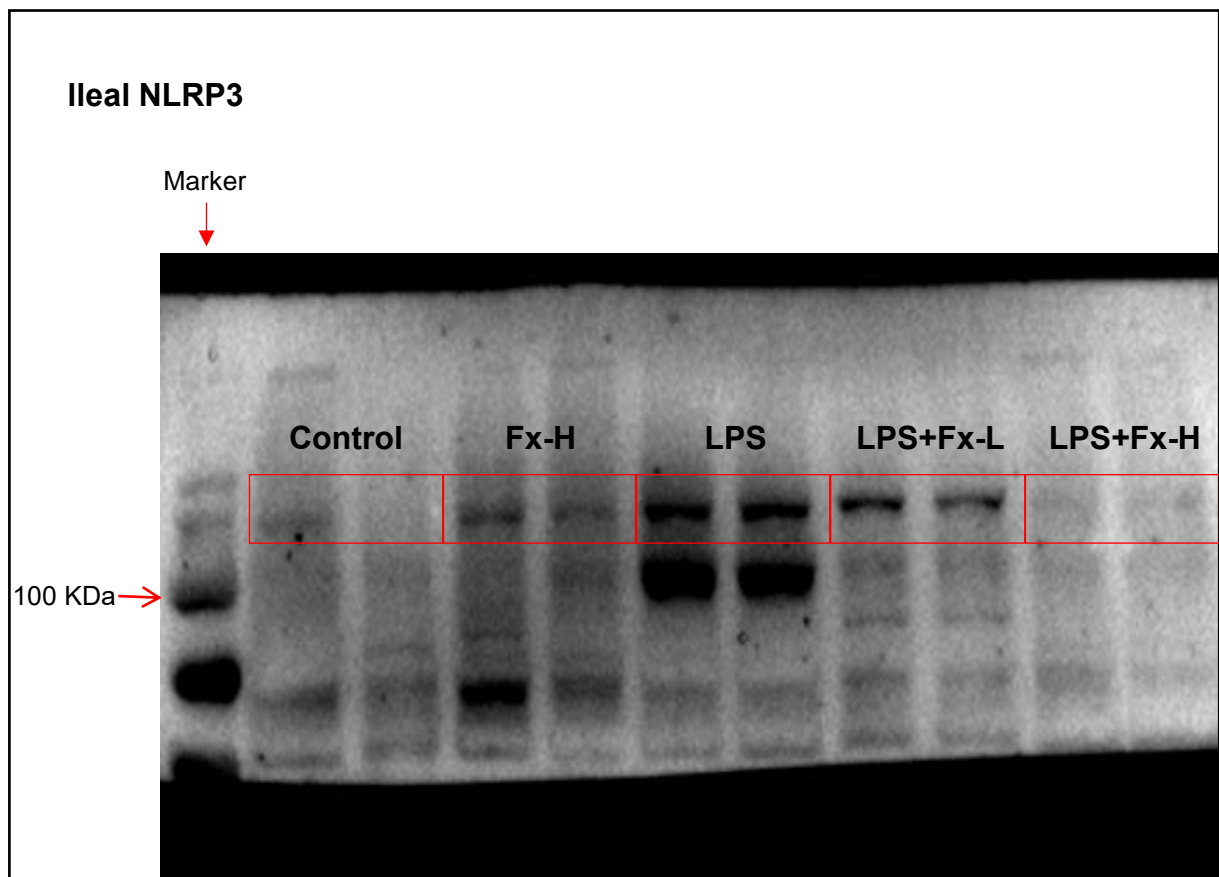




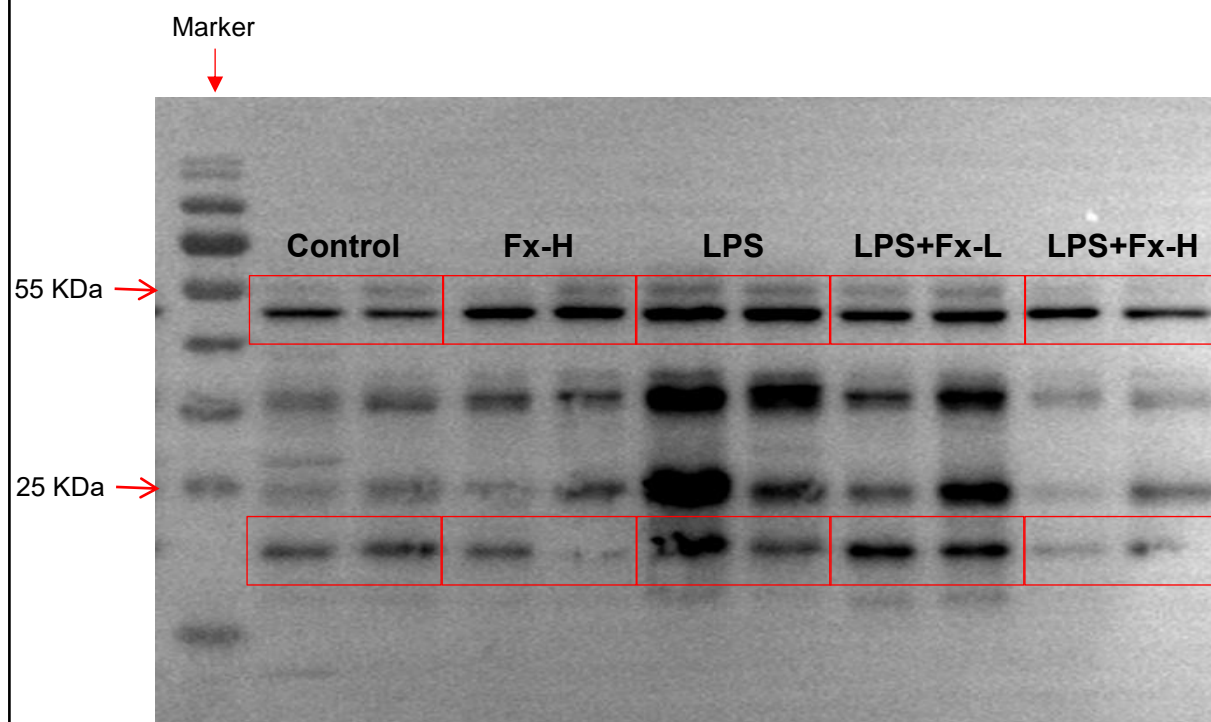
## Colonic GAPDH



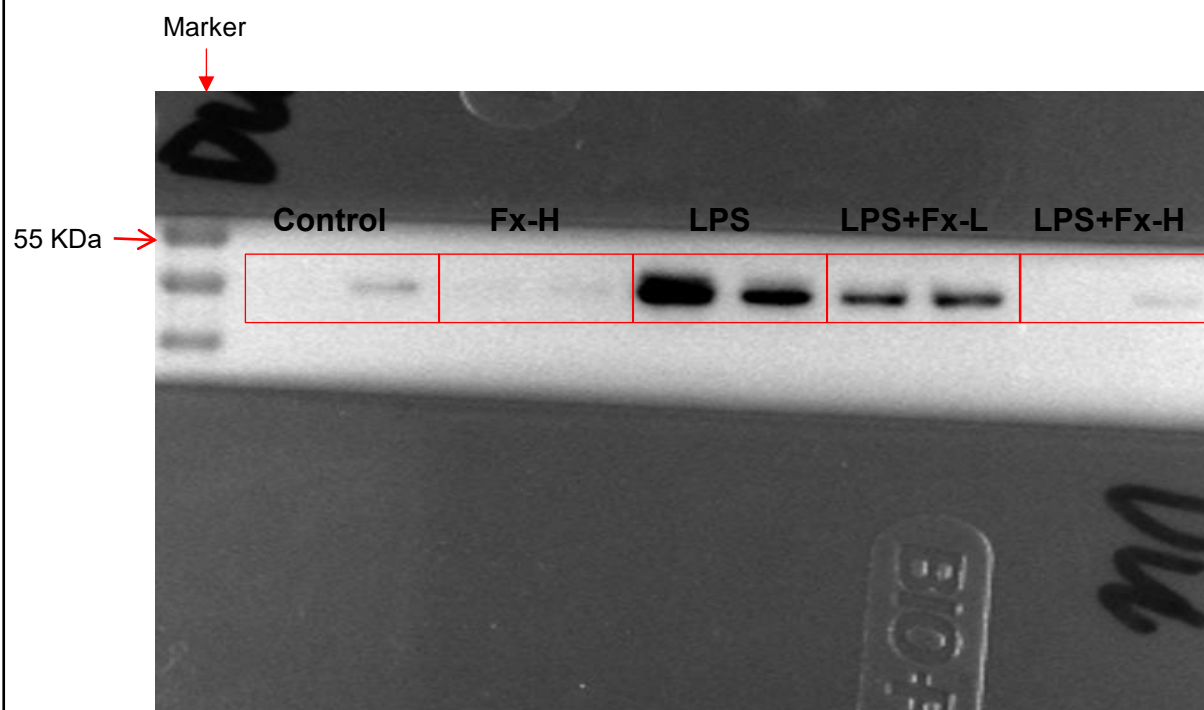
Uncropped blots for **Figure 6A**

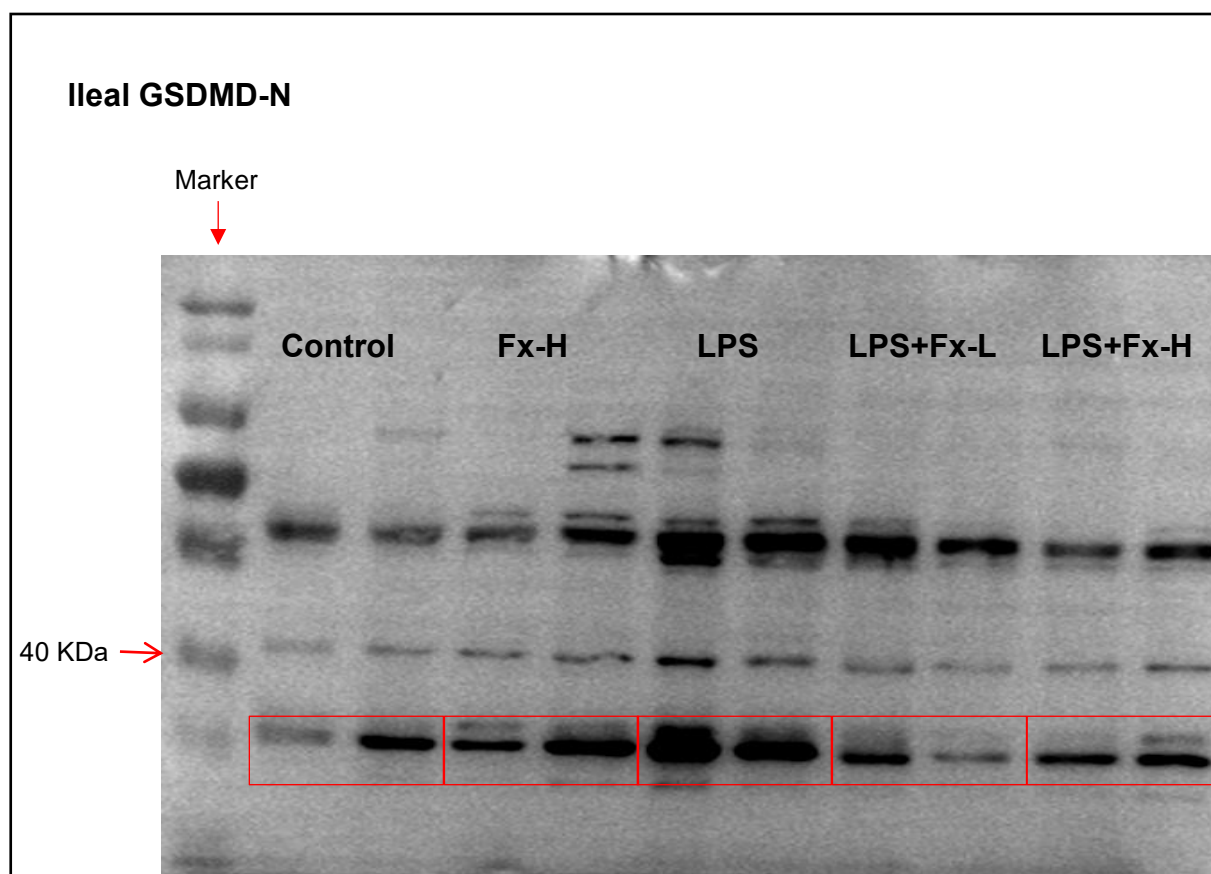
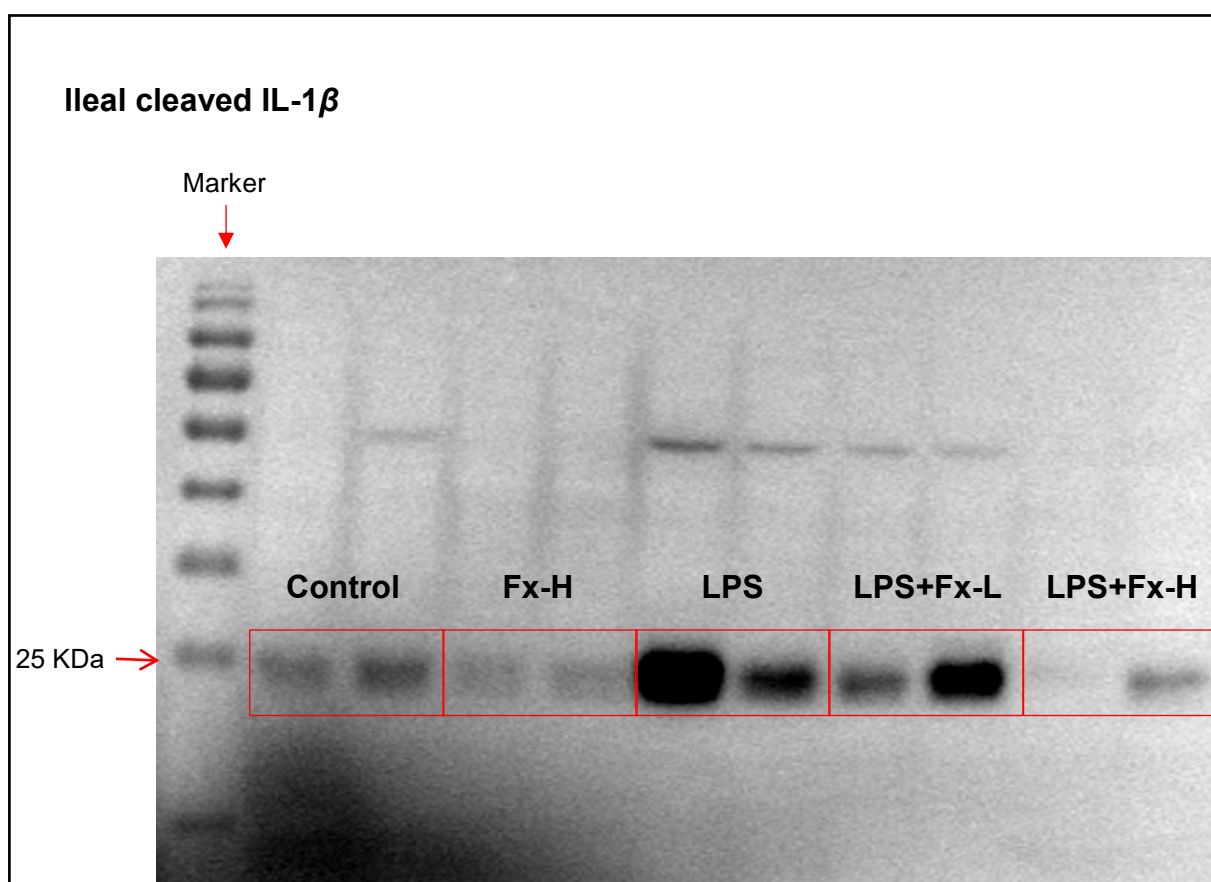


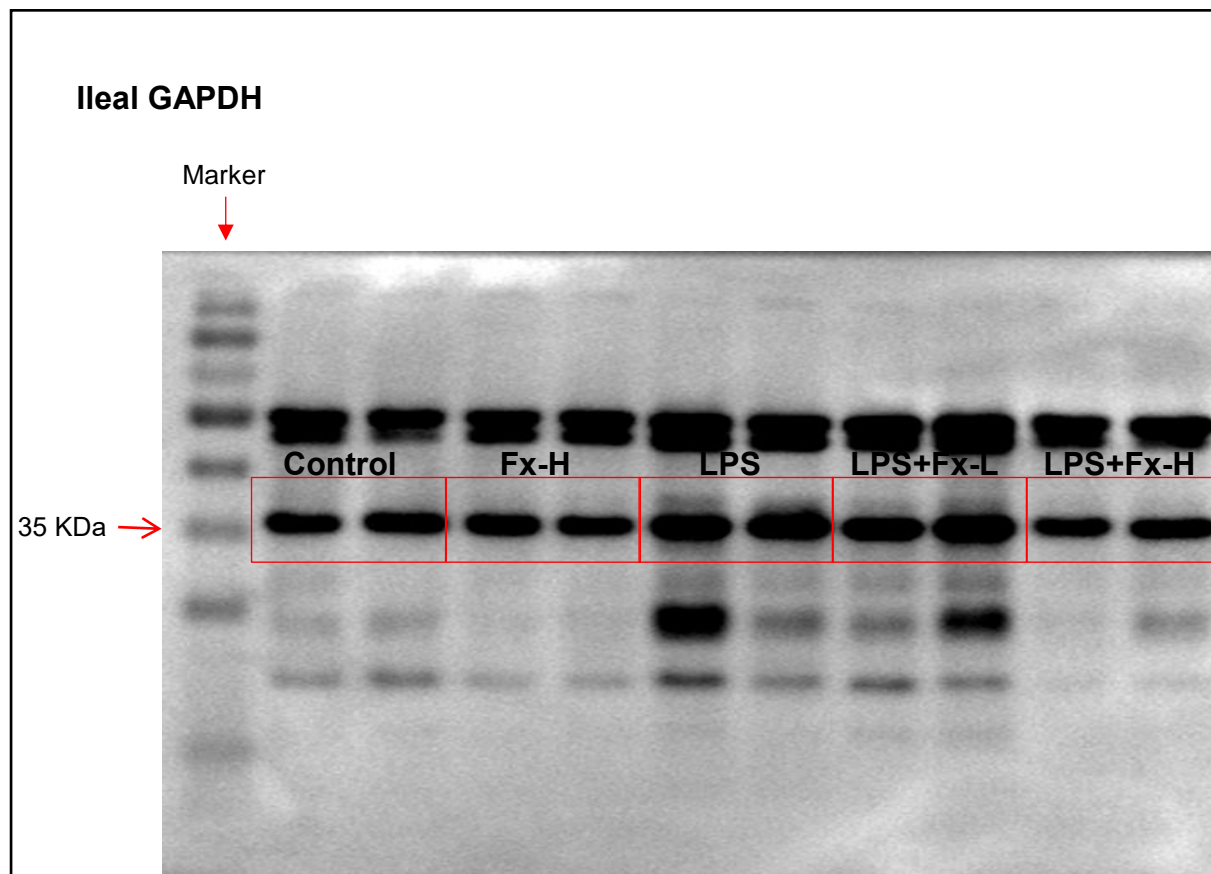
### Ileal pro-caspase 1 and cleaved caspase 1



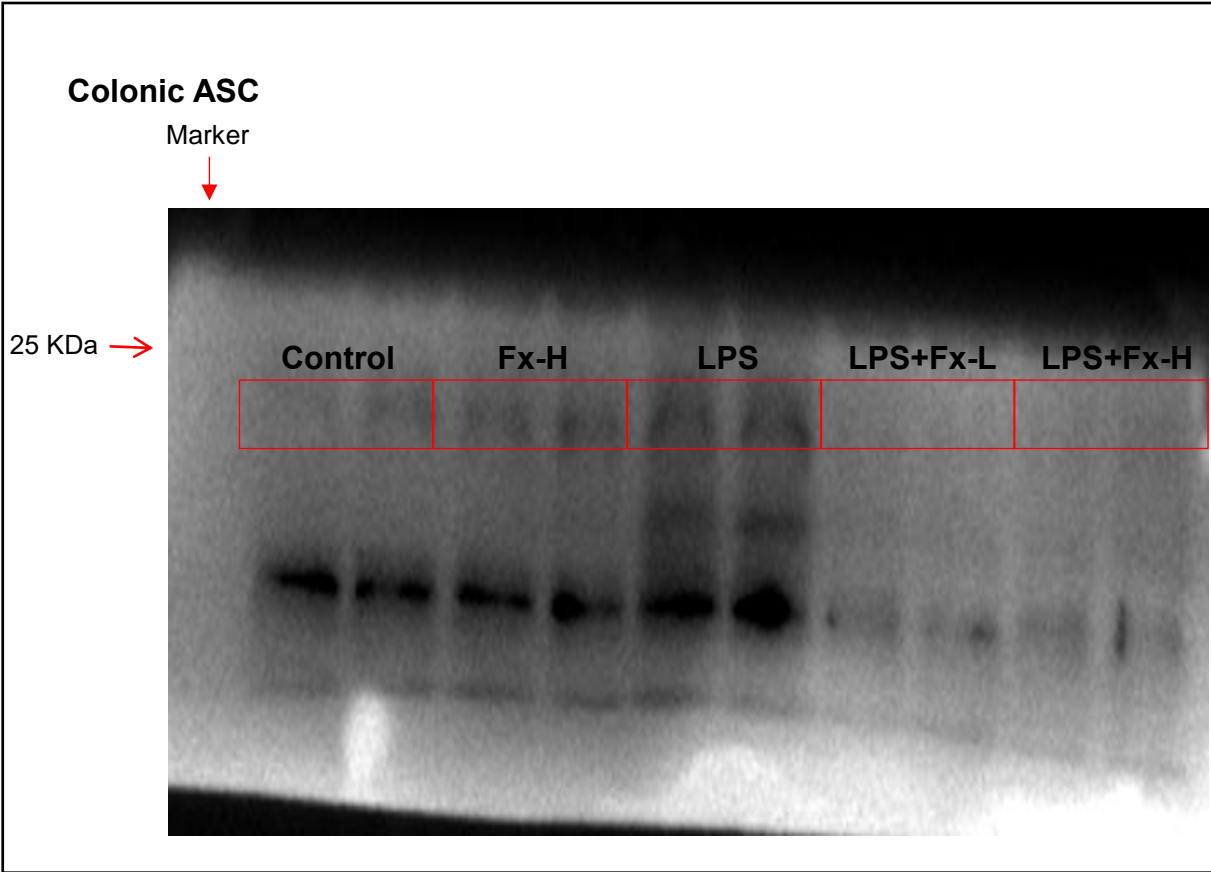
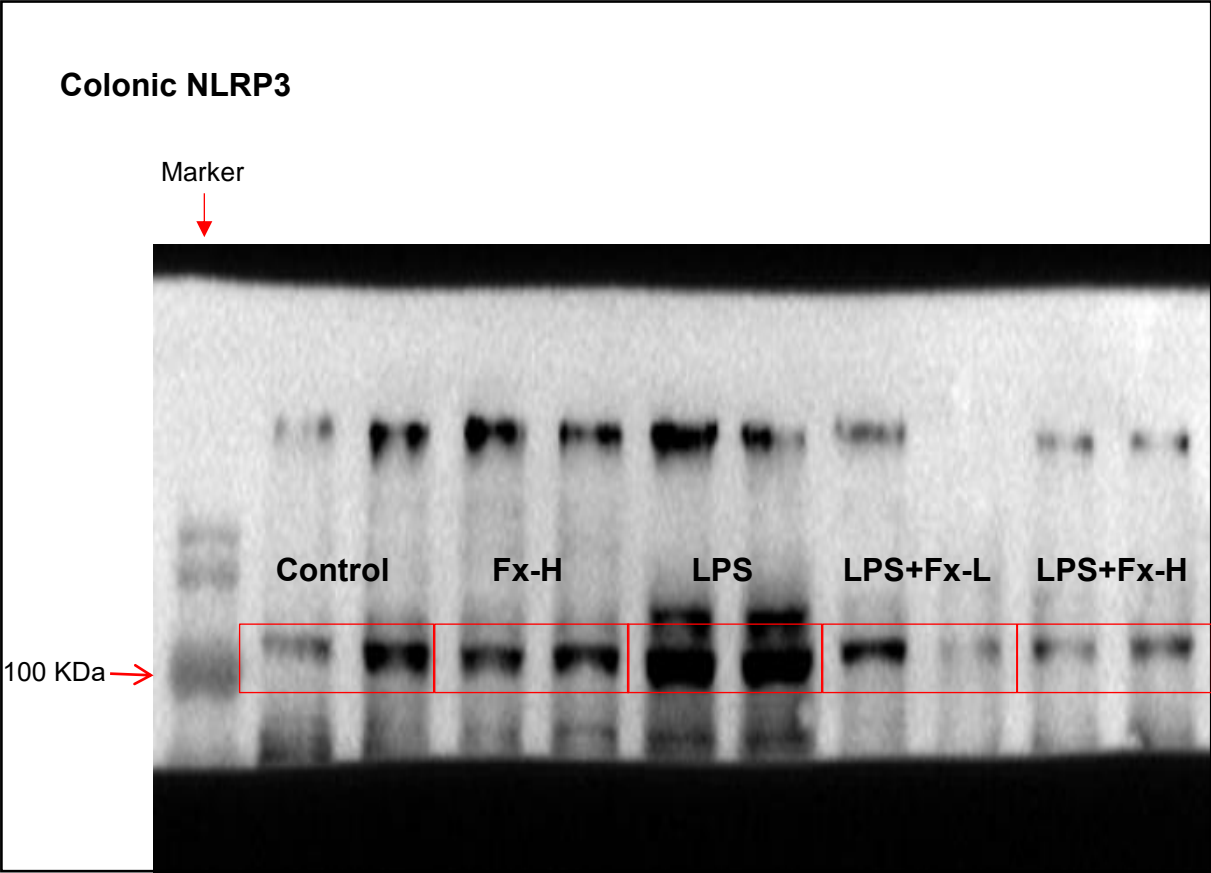
### Ileal pro-IL-1 $\beta$





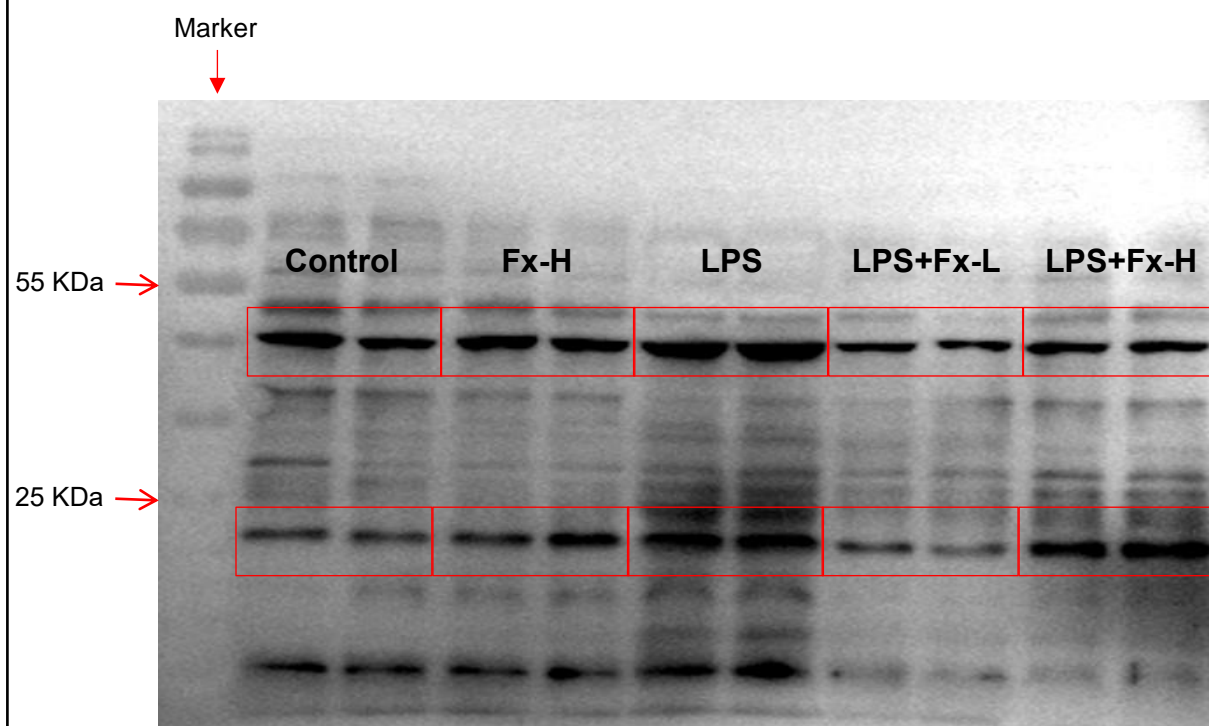


Uncropped blots for **Figure 6I**

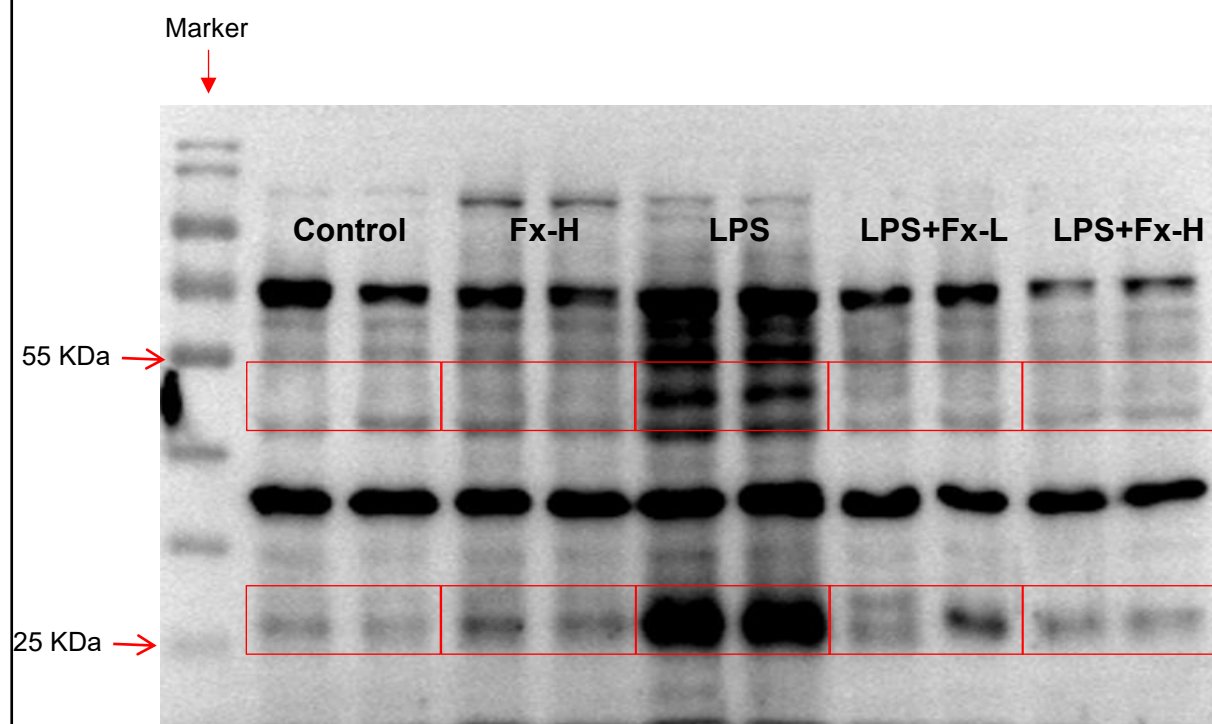




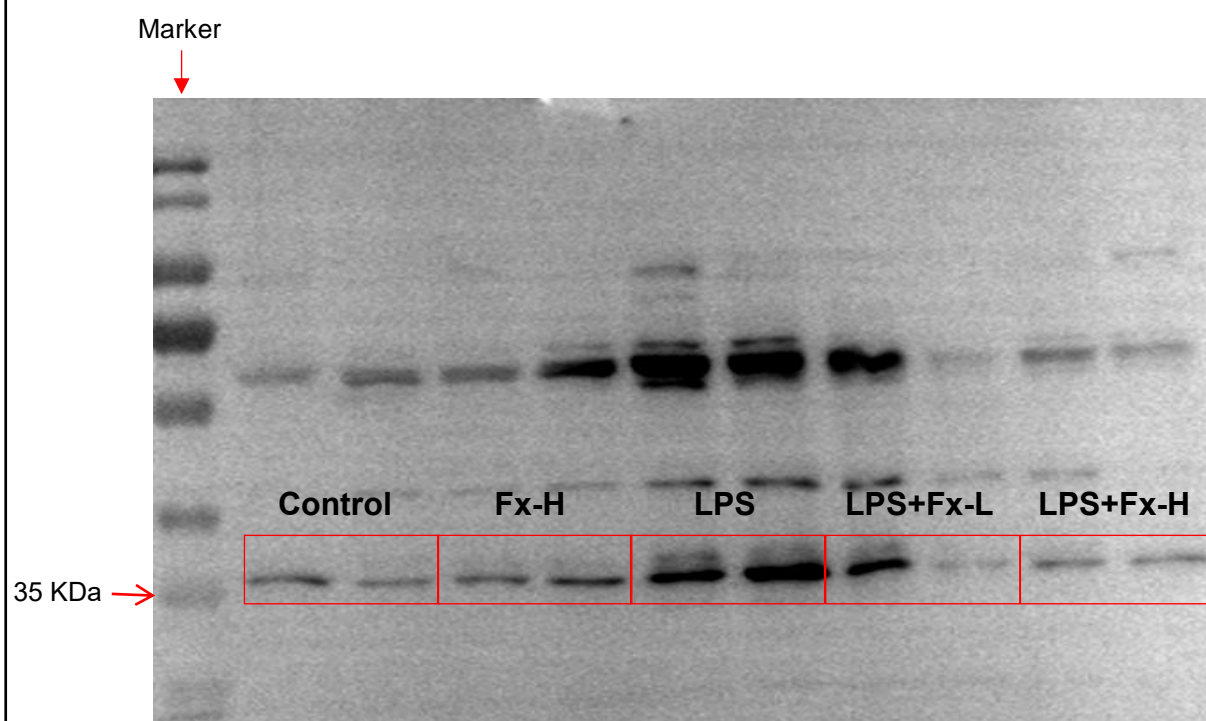
### Colonic pro-caspase 1 and cleaved caspase 1



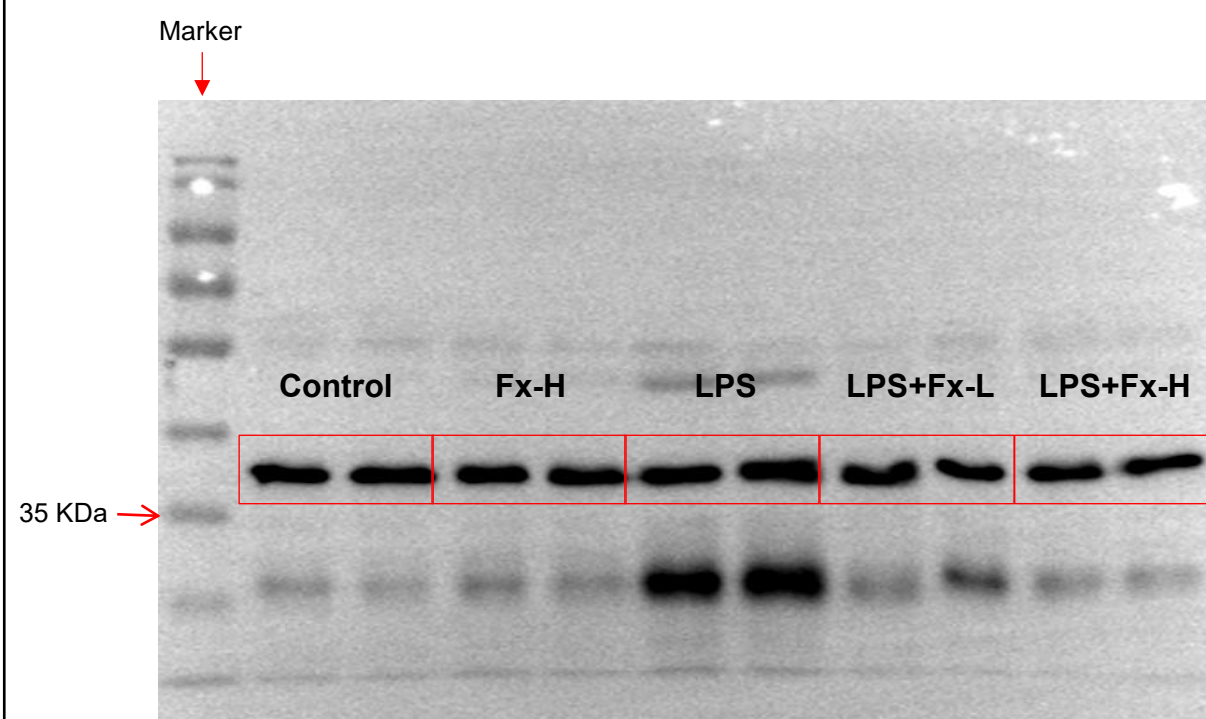
### Colonic pro-IL-1 $\beta$ and cleaved IL-1 $\beta$



### Colonic GSDMD-N

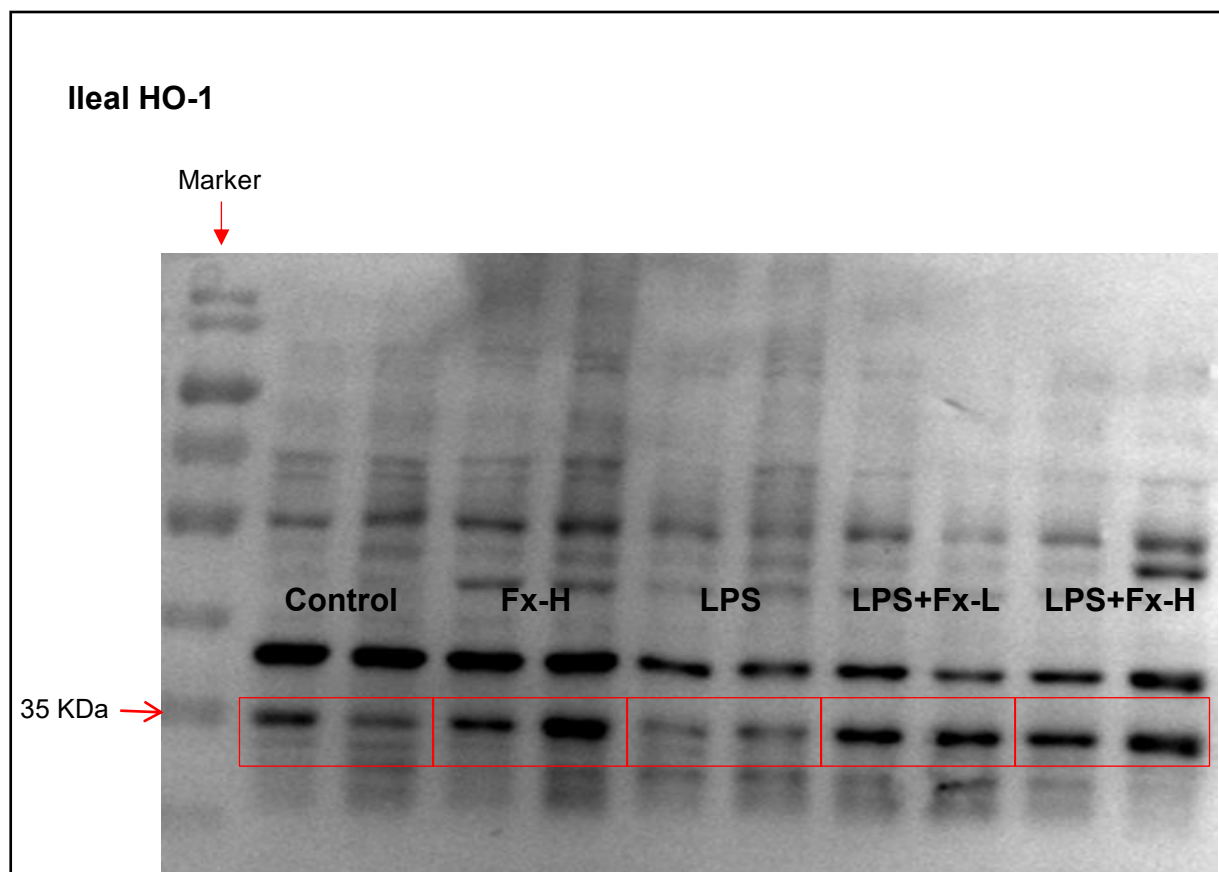
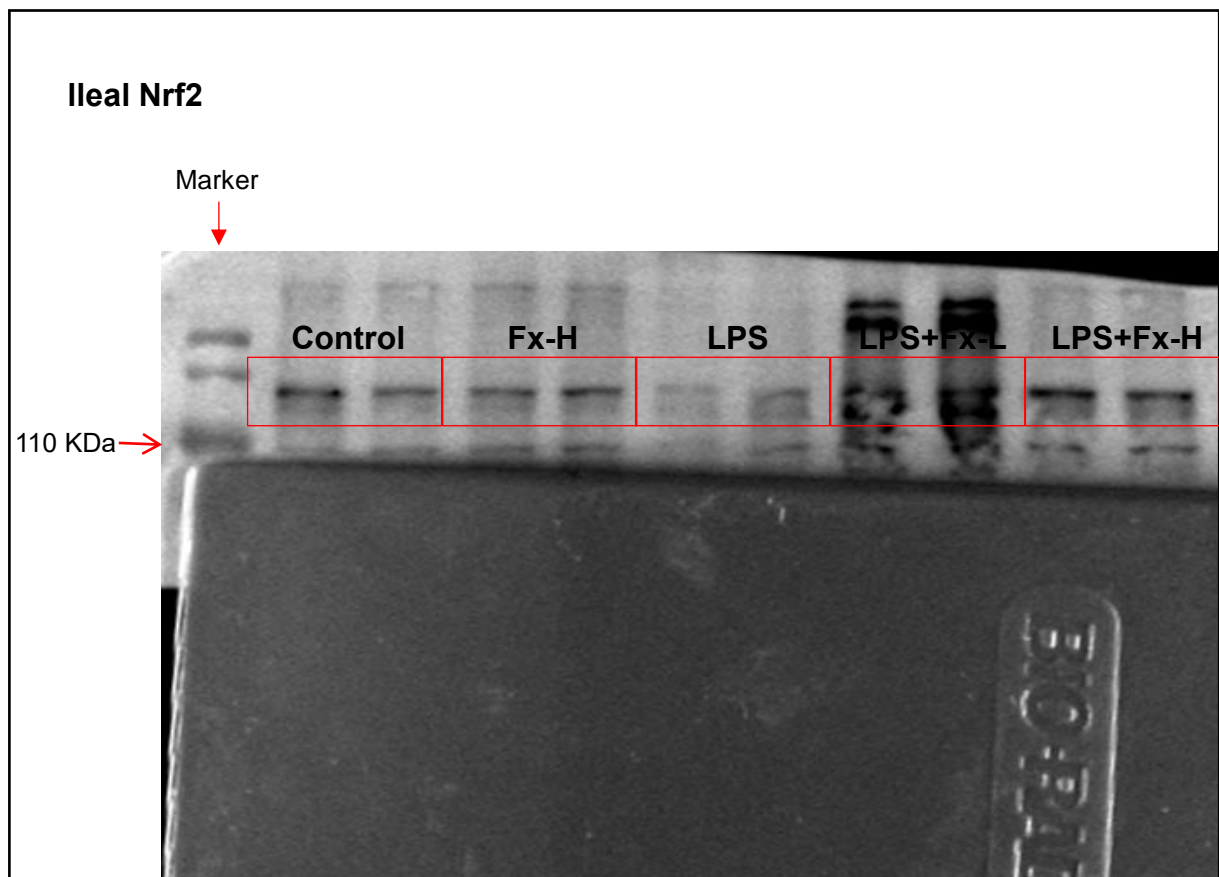


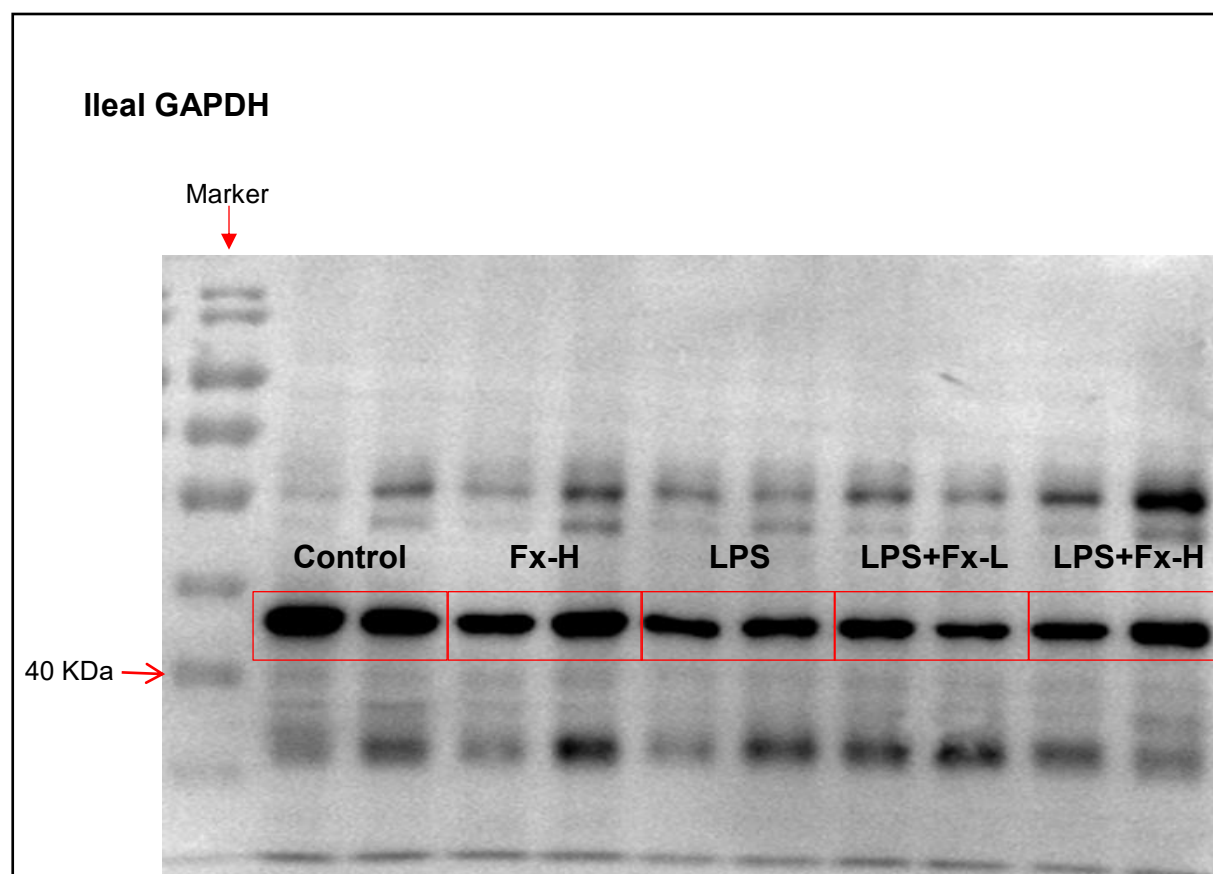
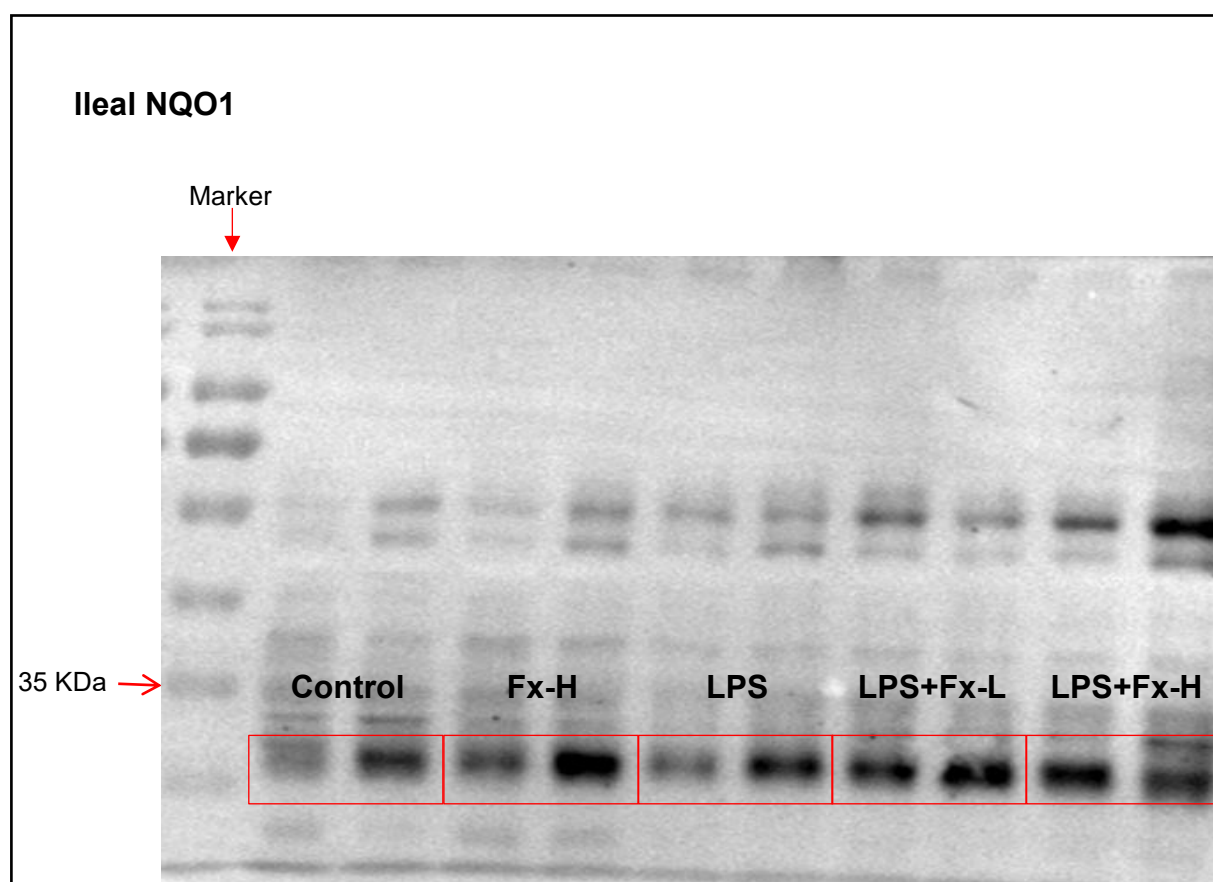
### Colonic GAPDH





Uncropped blots for **Figure 8A**





Uncropped blots for **Figure 8E**

