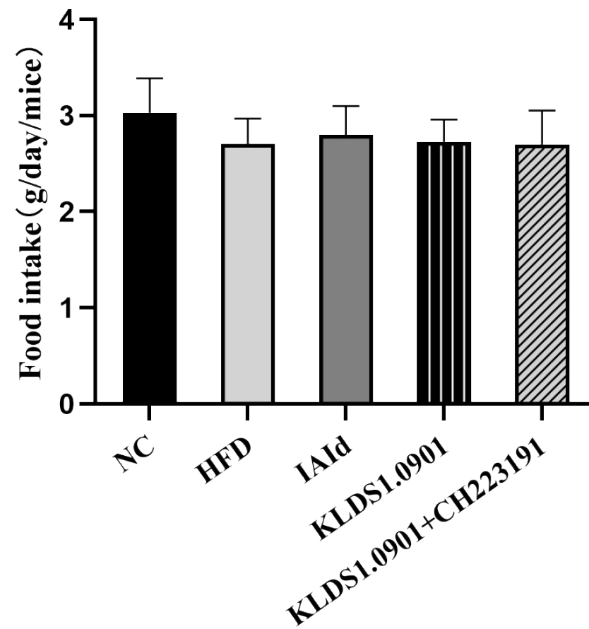


Table S1 Feed formula of mice

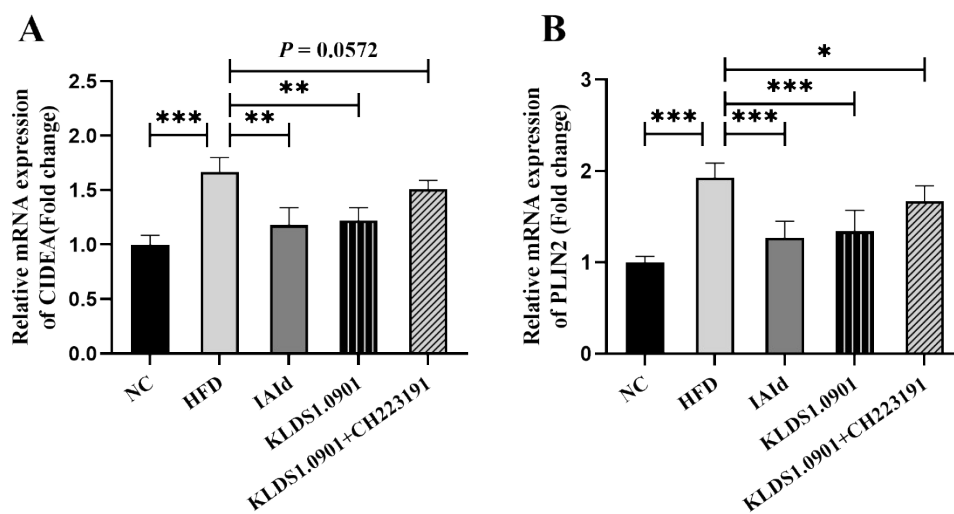
Ingredient	D12450B control feed		D12492 high fat feed	
	gm	Kcal	gm	Kcal
Casein, 80mesh	200	800	200	800
L-Cystine	3	12	3	12
Corn starch	315	1260	0	0
Maltodextrin 10	35	140	125	500
Sucrose	350	1400	68.8	275.2
Cellulose BW20	50	0	50	0
Soybean oil	25	255	25	225
Lard	20	180	245	2205
Mineral mix S10026	10	0	10	0
Dicalcium phosphate	13	0	13	0
Calcium carbonate	5.5	0	5.5	0
Potassium citrate, 1 H ₂ O	16.5	0	16.5	0
Vitamin mix V10001	10	10	10	40
Choline bitartrate	2	0	2	0
FD&C yellow dye # 5	0.05	0		0
FD&C blue dye # 1		0	0.05	0
Total	1055.05	4057	773.85	4057

Average daily food intake of mice in all the groups.

There was no statistically significant difference in dietary intake between the control group and all groups treated with HFD ($P > 0.05$). At the mean level, there was a trend toward lower dietary intake for all groups on the HFD diet, but this still indicates that HFD did not significantly reduce appetite.



Supplementary Figure 1. Average daily food intake of mice in all the groups.



Supplementary Figure 2. Relative mRNA expression of biomarker genes for fat droplet formation