

Supplementary material

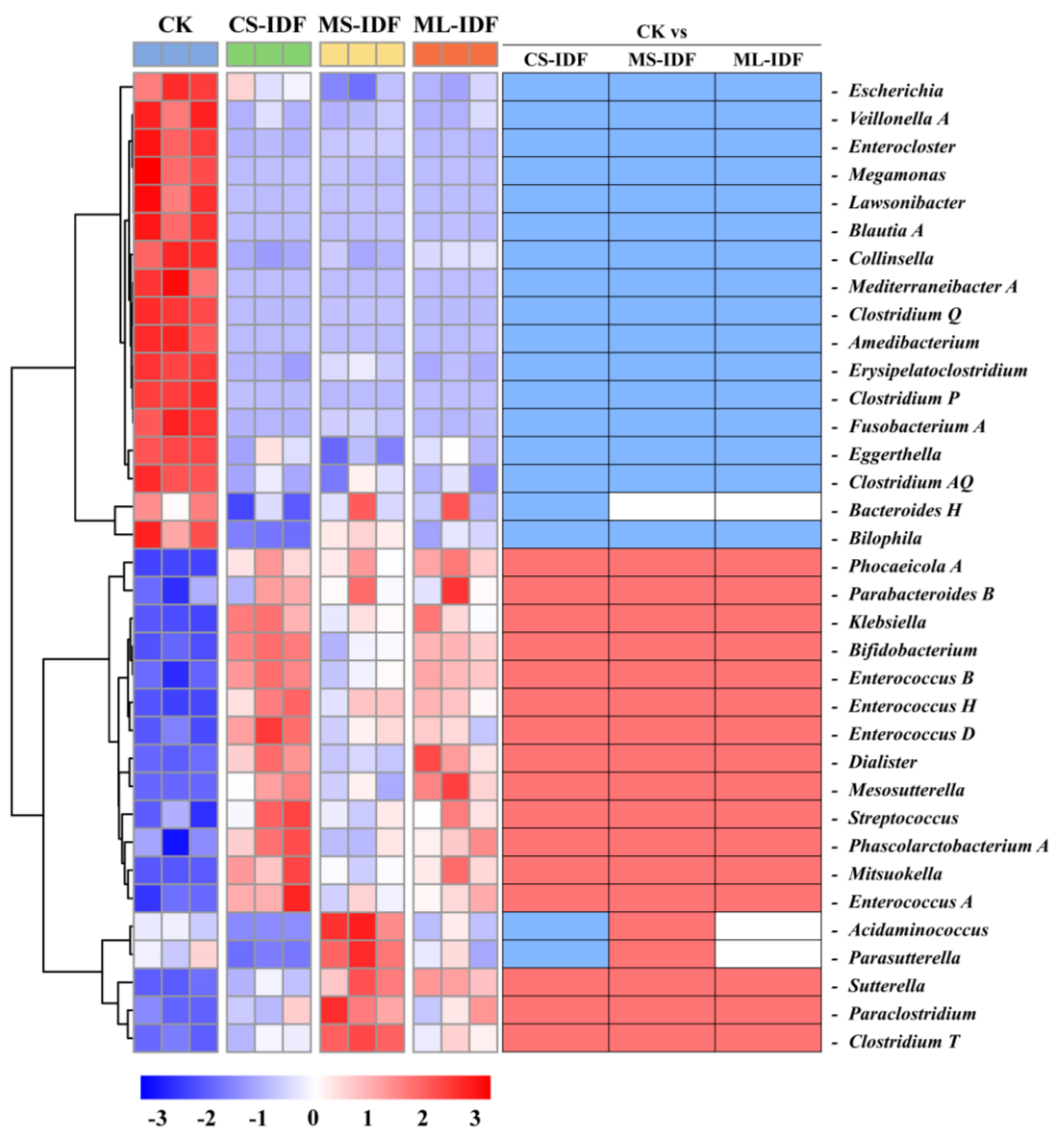


Figure S1. Changes of gut microbiota at genus level.

The heatmap of bacterial taxonomic profiling is based on the top 35 dominant genera. Red and blue in the right of heatmap mean significantly higher and significantly lower compared with CK, respectively ($p < 0.05$).

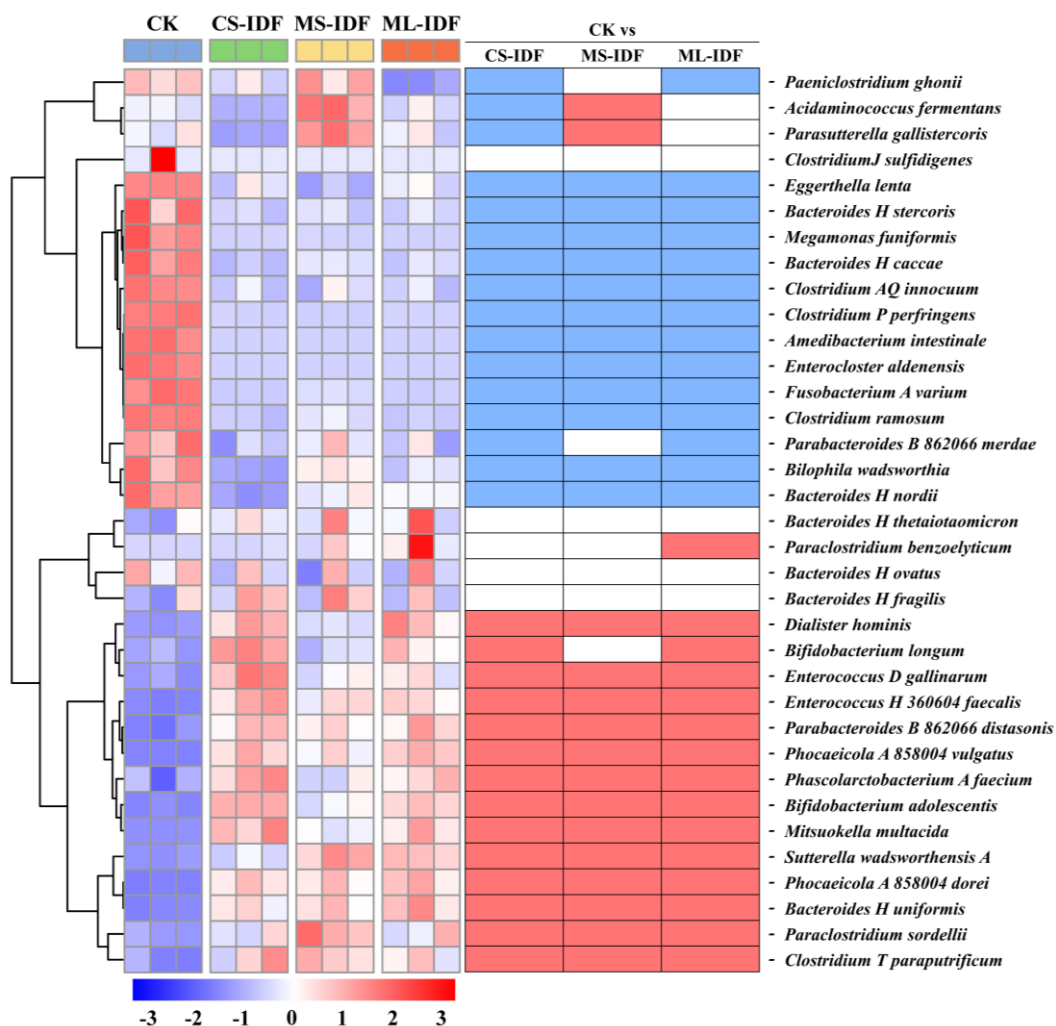


Figure S2. Changes of gut microbiota at species level.

The heatmap of bacterial taxonomic profiling is based on the top 35 dominant species. Red and blue in the right of heatmap mean significantly higher and significantly lower compared with CK, respectively ($p < 0.05$).