

**Supporting information:**

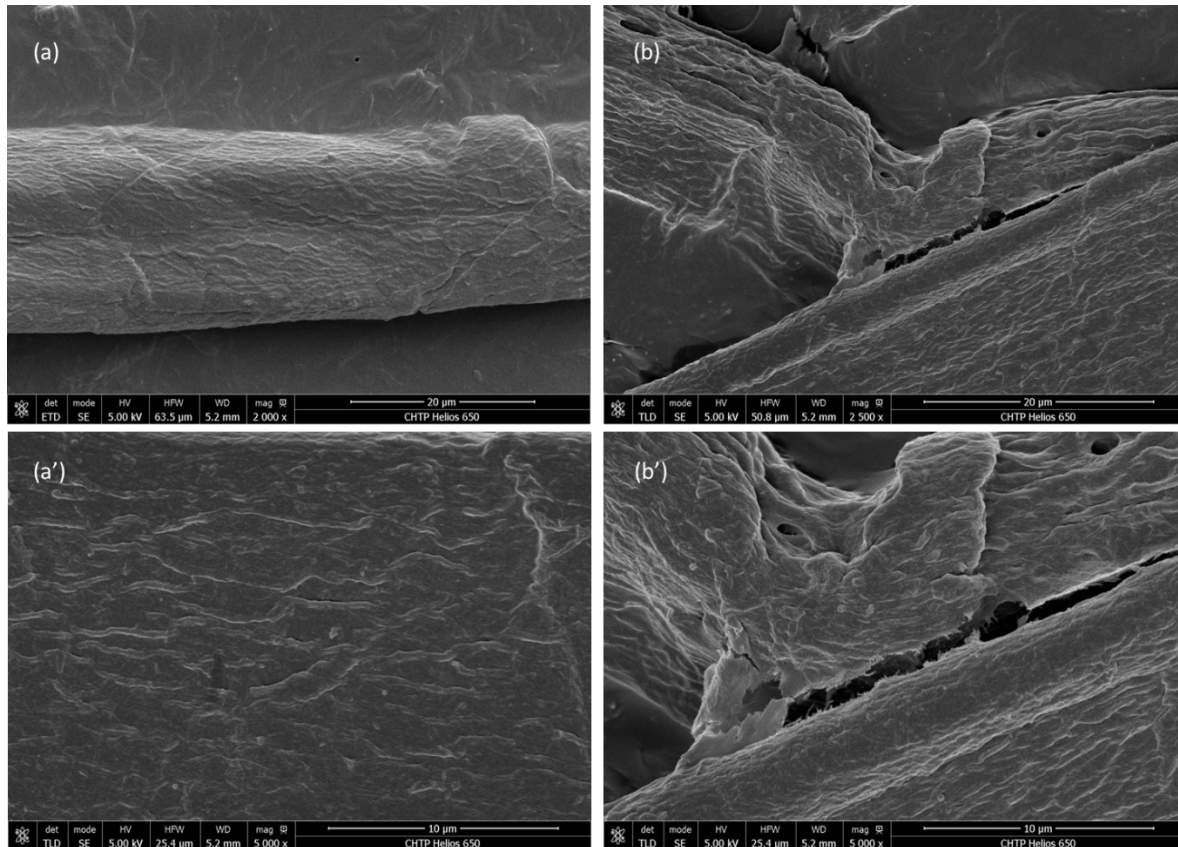
**Production of lignin containing cellulose nanofibrils (CNF) after enzymatic treatment of curl-induced, unbleached kraft pulps**

Jie Wu, Yintian Dong, Xia Sun, Peipei Wang, Jiaying Zhu, Yeling Zhu, Feng Jiang, and Jack Saddler \*

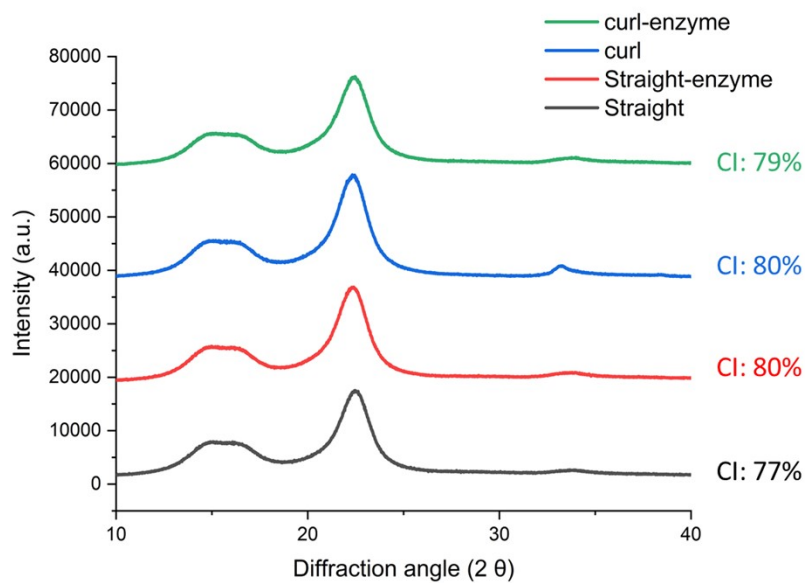
**Corresponding author \*:**

Prof. Jack Saddler (jack.saddler@ubc.ca)

As shown below, the surface morphology and crystallinity index of fibres were analyzed by X-ray diffraction analysis (XRD, Bruker, Billerica) and Scanning Electron Microscope (SEM, Helios NanoLab 650 FIB-SEM).



**Figure S1.** Surface structure of straight (a, a') and curl (b, b') fibres before (a, b) and after (a', b') treatment of enzyme mixture, as measured by scanning electron microscope (SEM).



**Figure S2.** X-ray diffraction analysis (XRD) of straight and curl fibres before and after treatment of enzyme mixture lacking CBH activity.