

## **Supplementary Information**

# **Layered MOF supported on 2D delaminated MXene (Mo<sub>2</sub>Ti<sub>2</sub>C<sub>3</sub>) nanosheets boosted water splitting**

**Maida Murtaza<sup>1</sup>, Komal Farooq<sup>1</sup>, Waqas Ali Shah<sup>1,2</sup>, Iftikhar Ahmed<sup>1</sup>, Amir Waseem<sup>1\*</sup>.**

<sup>1</sup>Department of Chemistry, Quaid-i-Azam University, Islamabad, Pakistan.

<sup>2</sup>School of Chemistry and Chemical Engineering, Henan Normal University, Xinxiang, China-453007.

**\*Corresponding author's email: [amir@qau.edu.pk](mailto:amir@qau.edu.pk)**

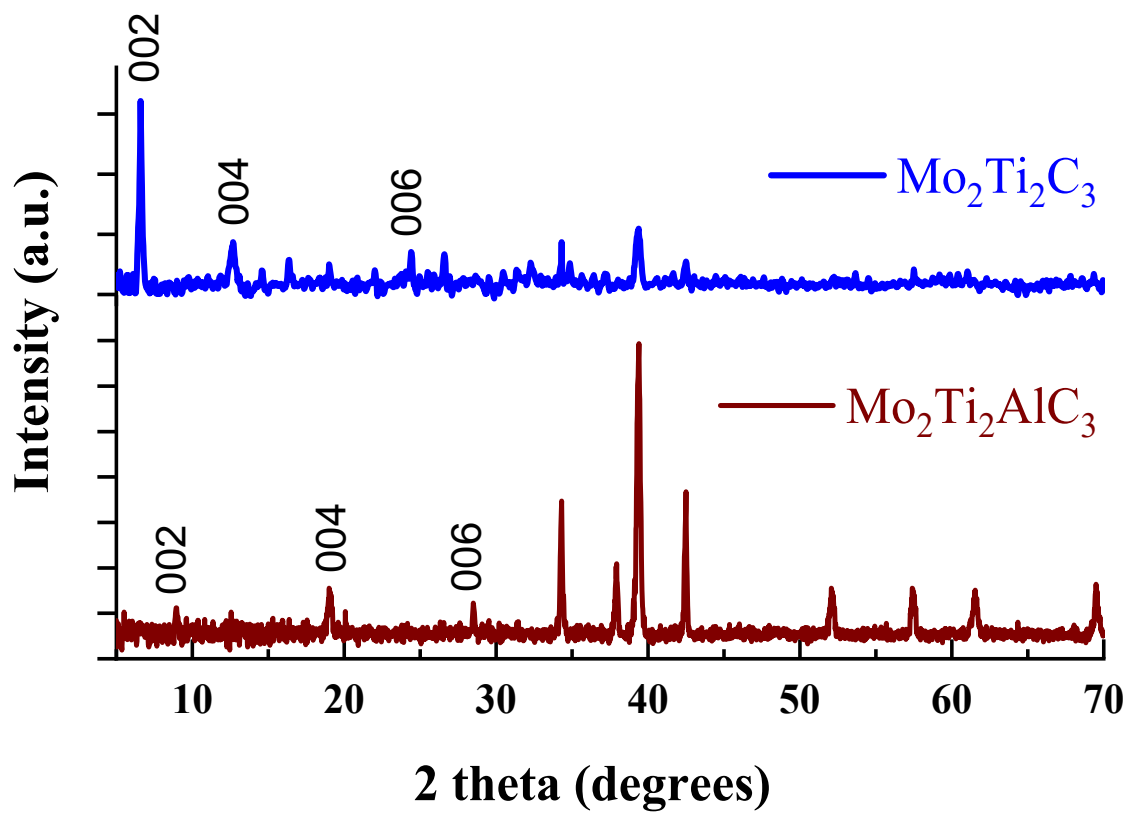
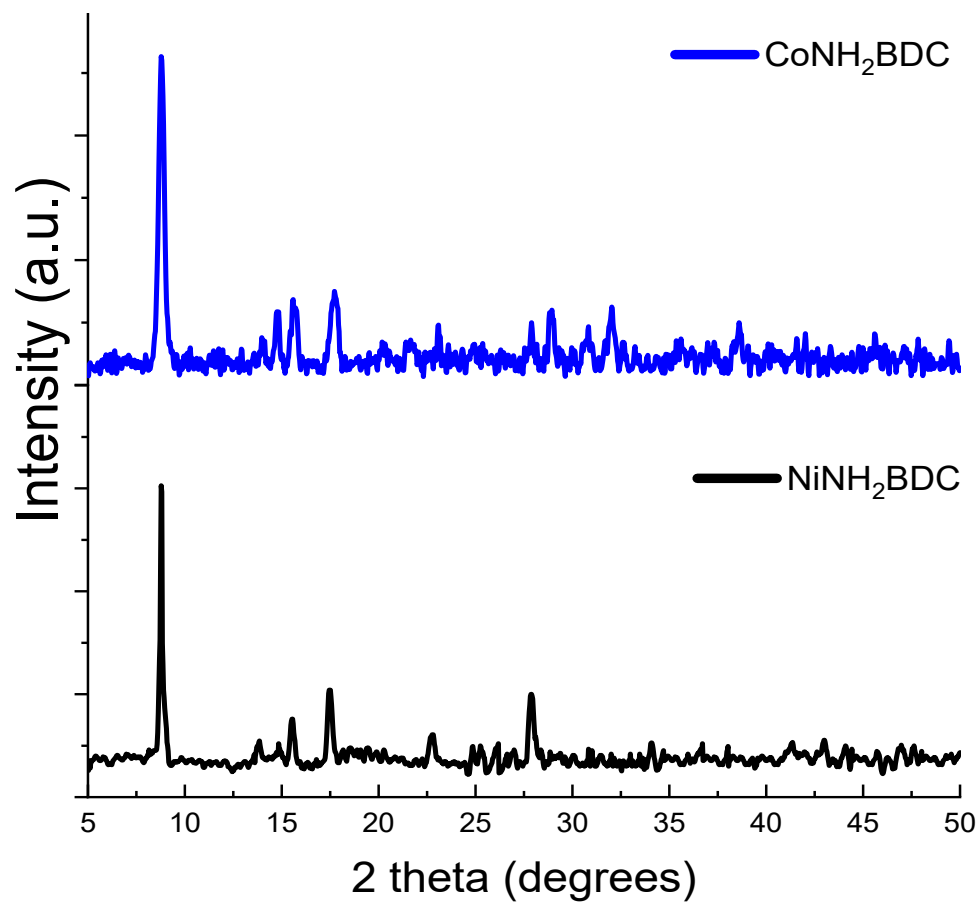
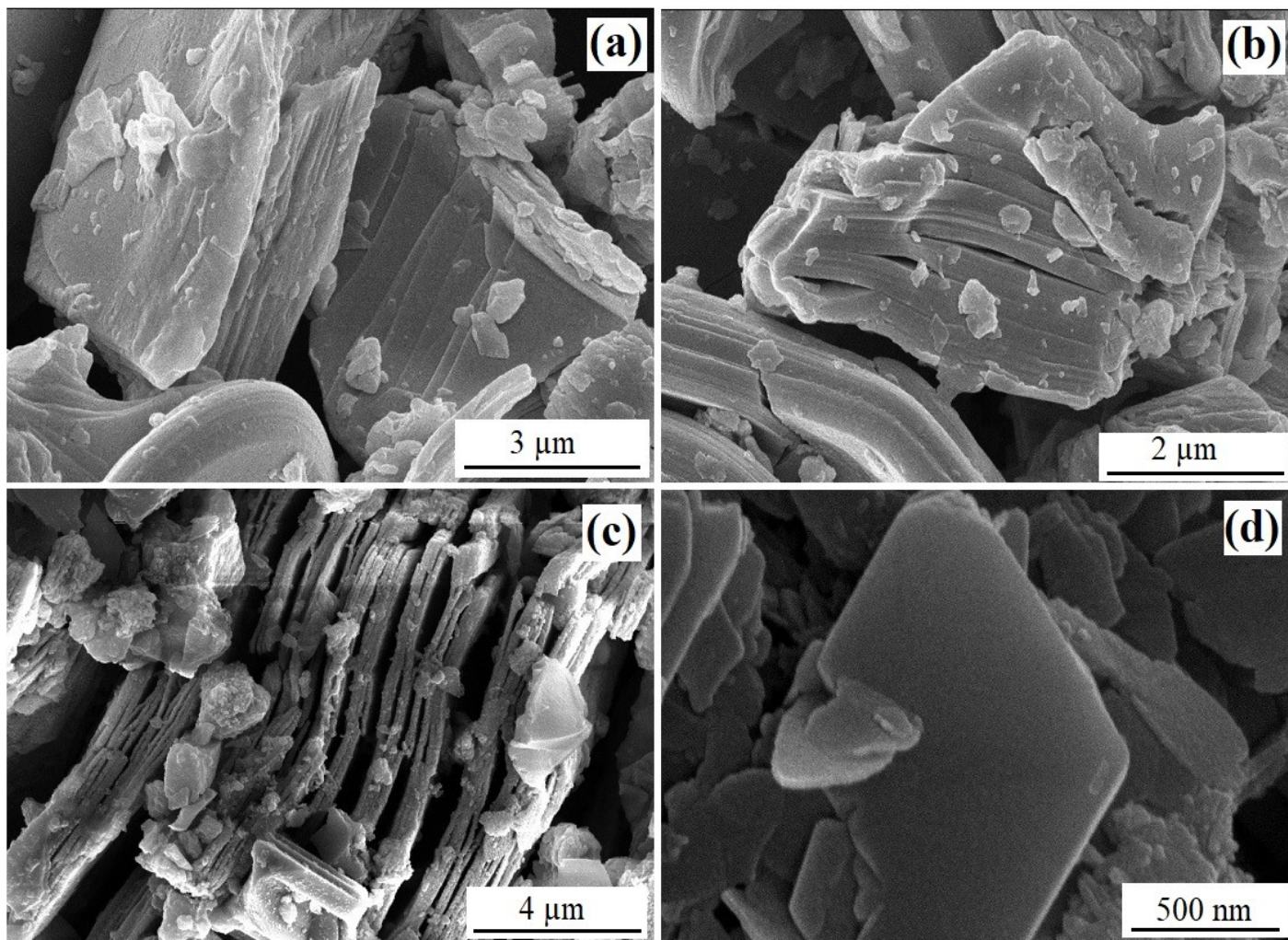


Figure S1 XRD pattern of  $\text{Mo}_2\text{Ti}_2\text{AlC}_3$  MAX phase and  $\text{Mo}_2\text{Ti}_2\text{C}_3$  MXene.



**Figure S2** XRD patterns of CoNH<sub>2</sub>BDC and NiNH<sub>2</sub>BDC MOF



**Figure S3** FESEM images of Mo<sub>2</sub>Ti<sub>2</sub>AlC<sub>3</sub> MAX phase (a, b) and Mo<sub>2</sub>Ti<sub>2</sub>C<sub>3</sub> MXene (c, d).

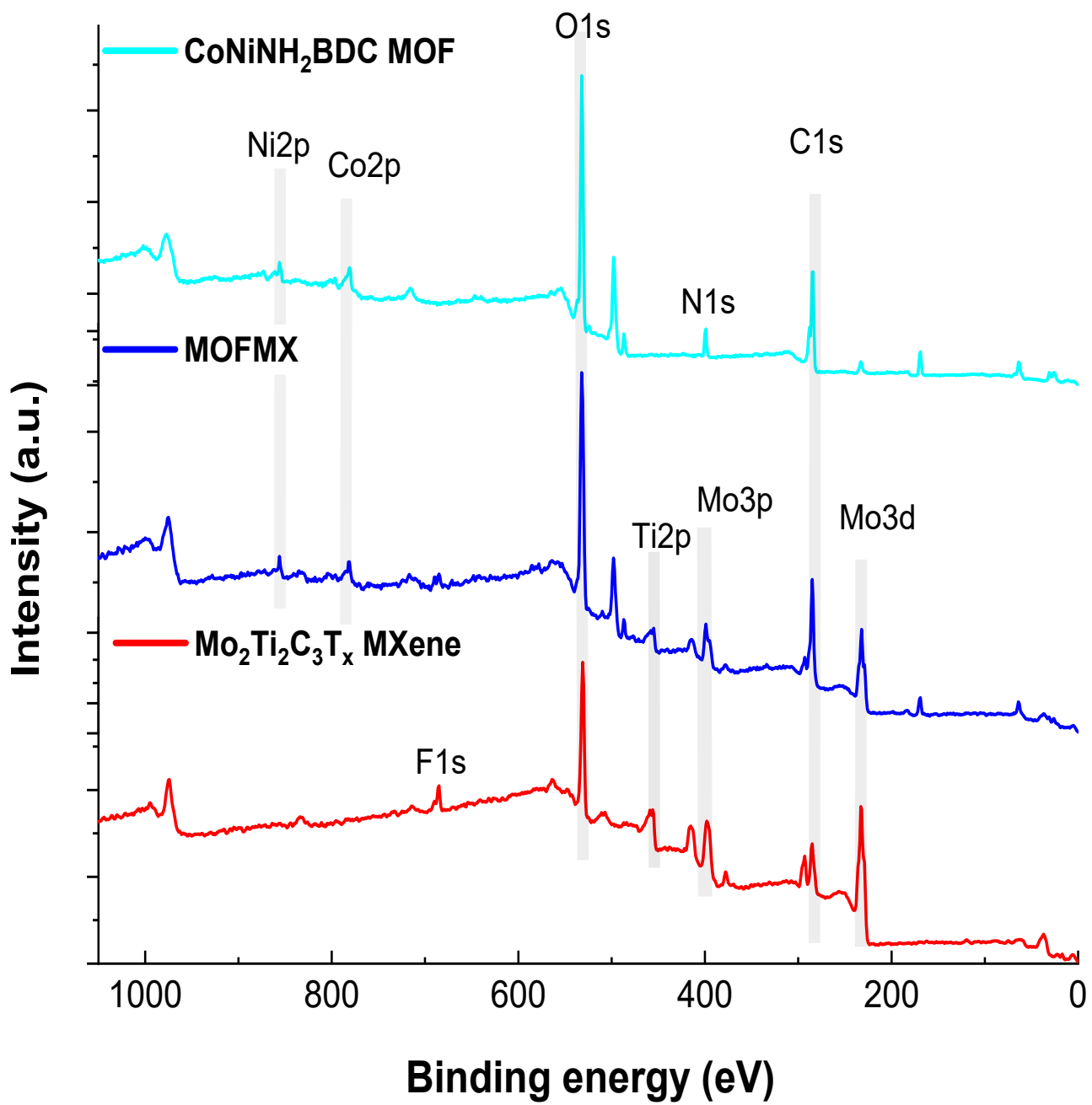
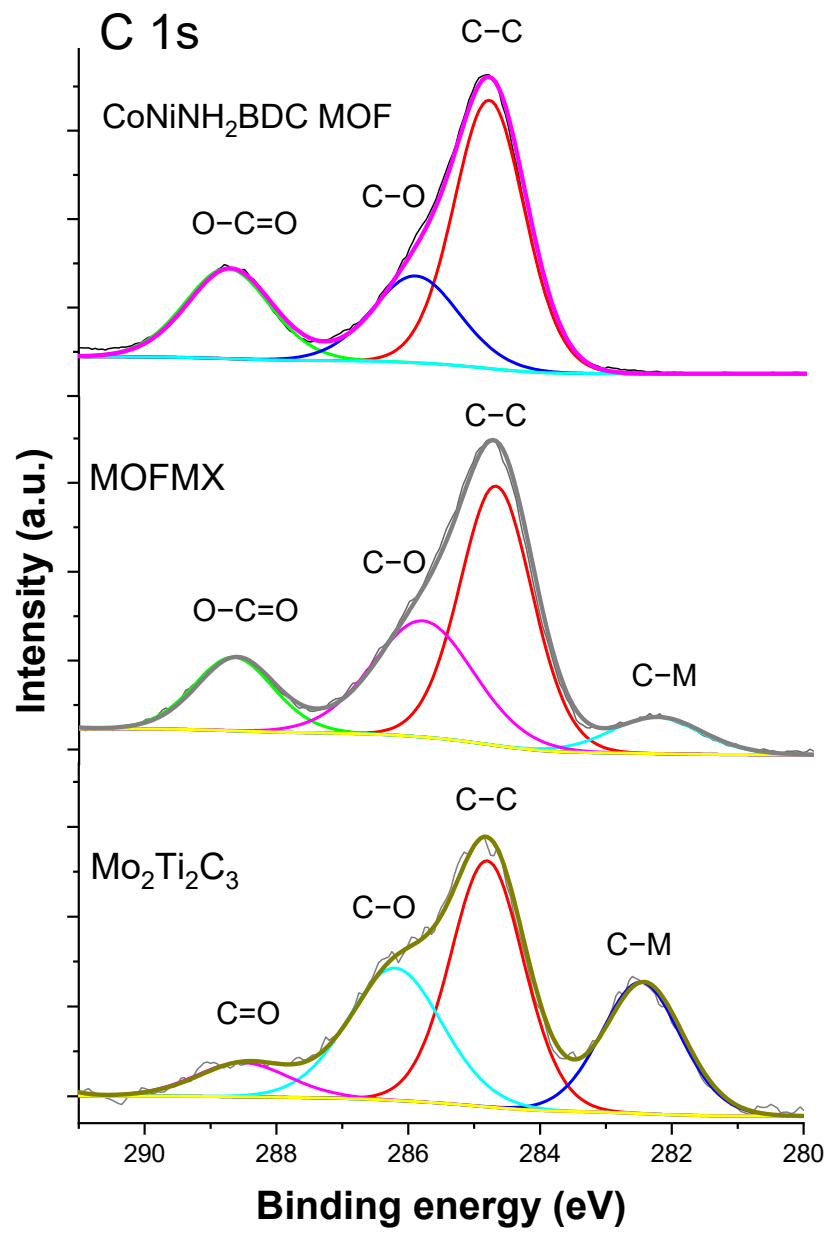


Figure S4 XPS survey scan of CoNiNH<sub>2</sub>BDC MOF, MXene and MOF/MX composite.



**Figure S5** High resolution XPS spectra of C 1s of CoNiNH<sub>2</sub>BDC, MOF MX and Mo<sub>2</sub>Ti<sub>2</sub>C<sub>3</sub> MXene.

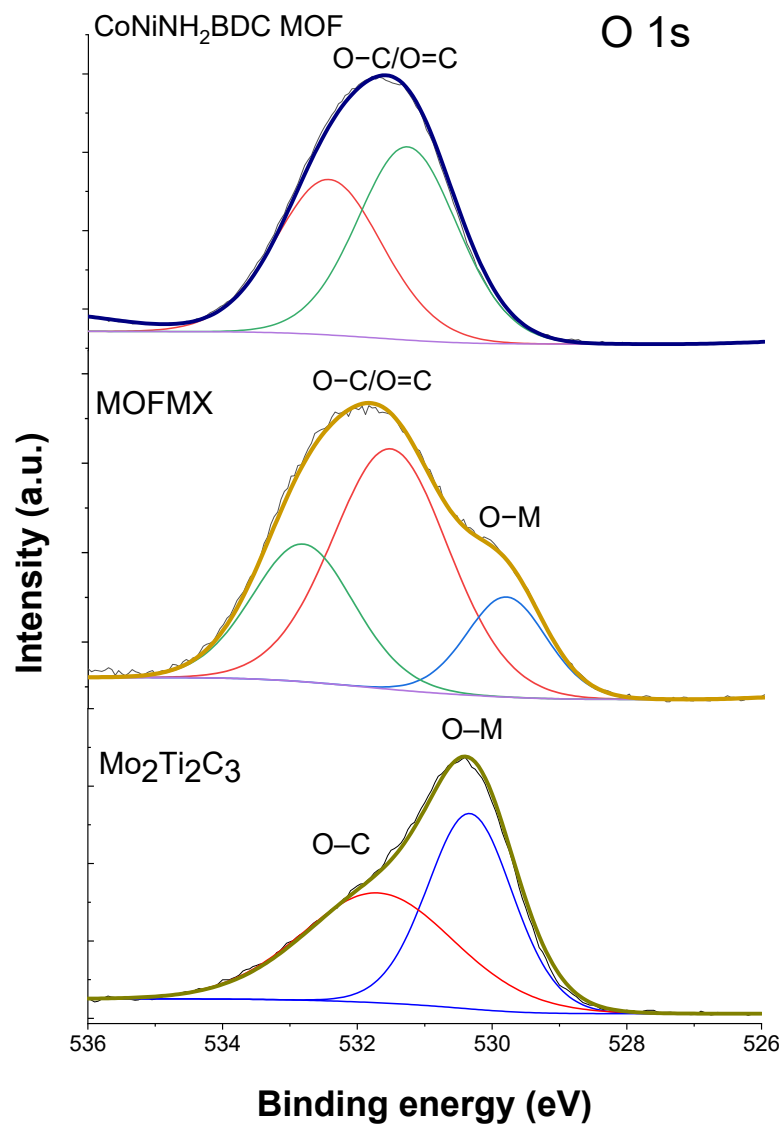


Figure S6 High resolution XPS spectra of O 1s of CoNiNH<sub>2</sub>BDC, MOFMX and Mo<sub>2</sub>Ti<sub>2</sub>C<sub>3</sub> MXene

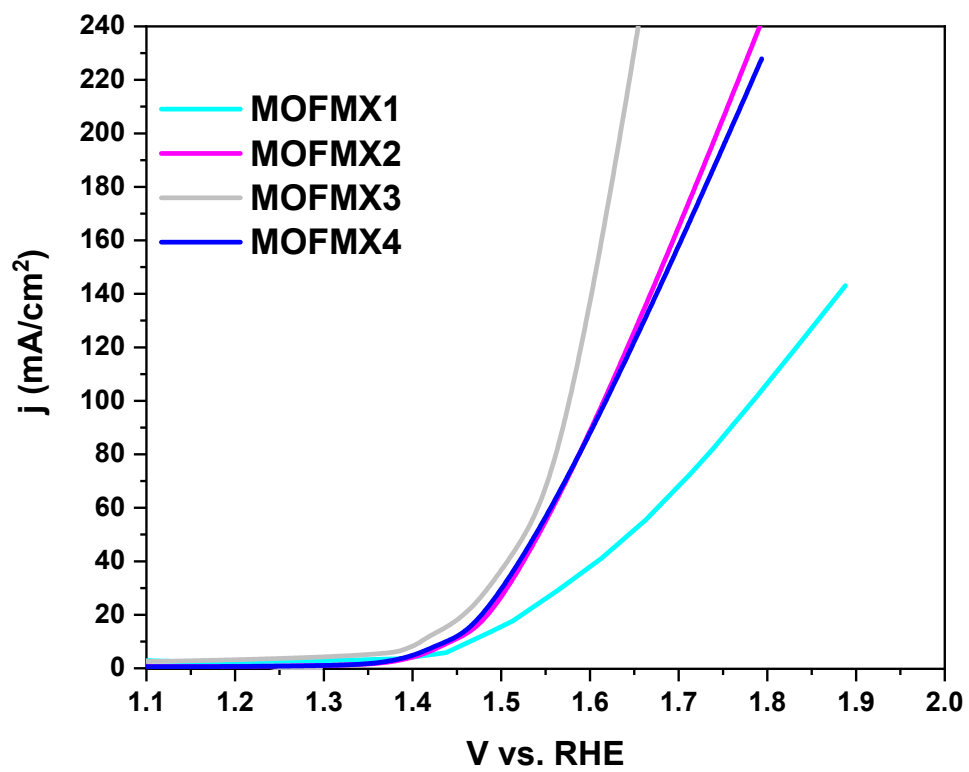


Figure S7 LSV curves for electrocatalytic OER efficiency



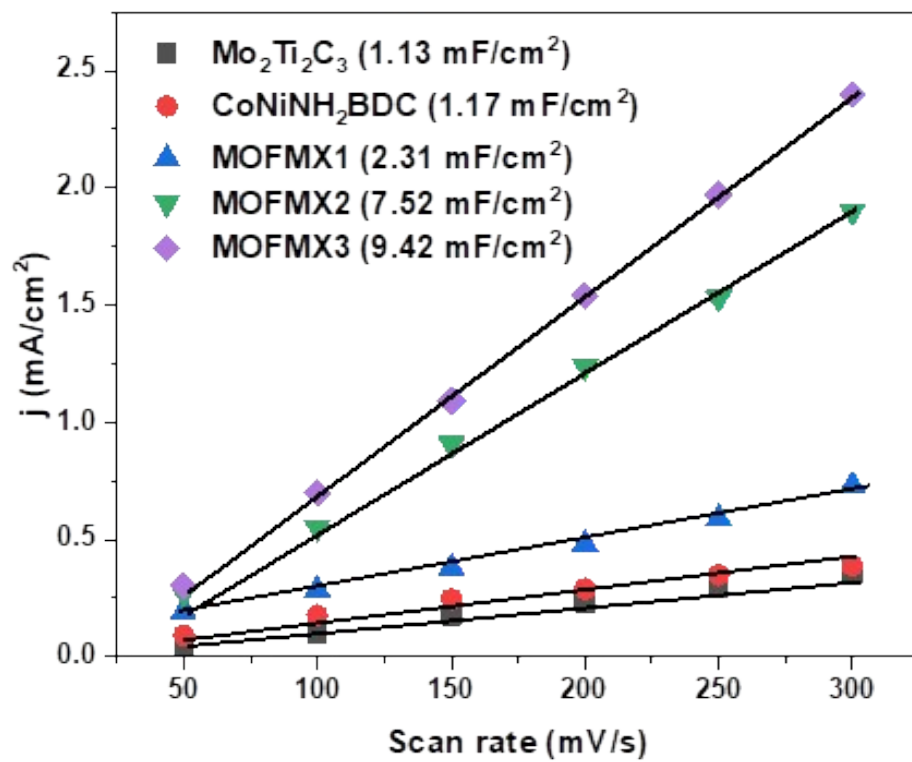
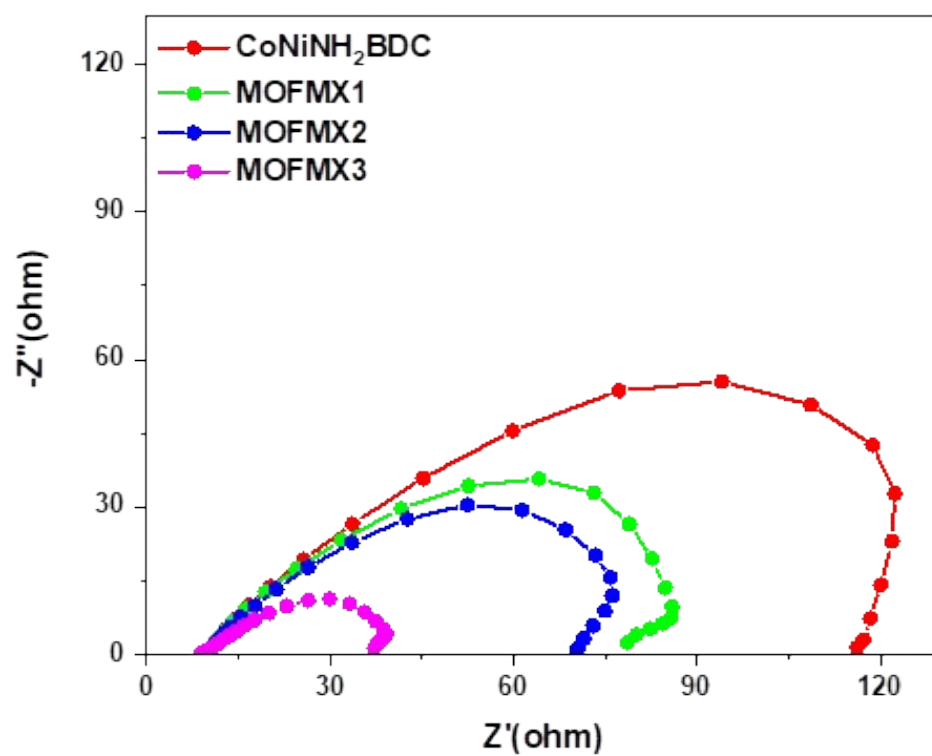
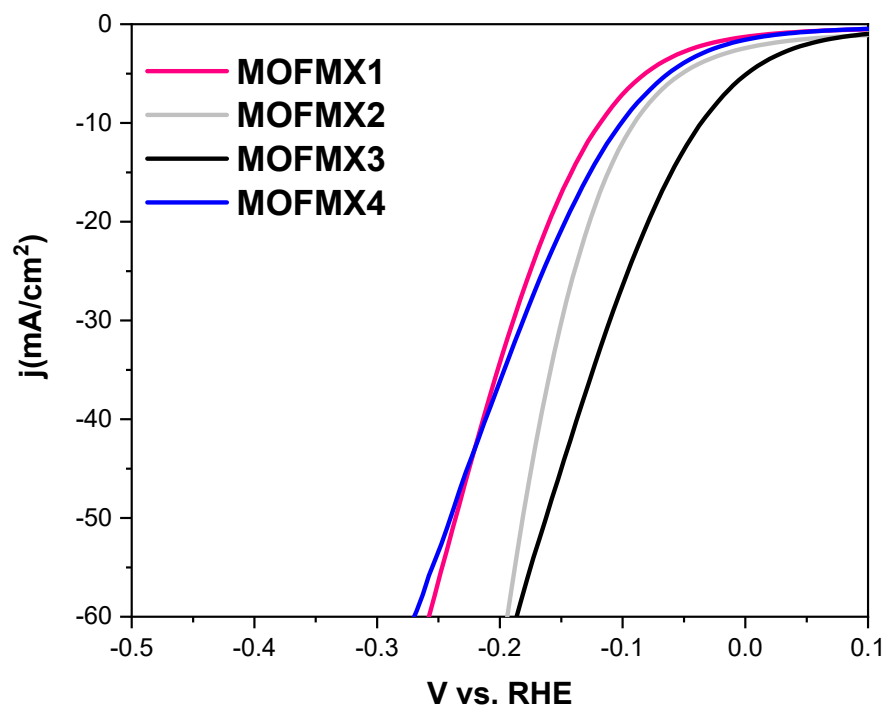


Figure S8 Double layer capacitance ( $C_{dl}$ ) evaluation.



**Figure S9** Electrochemical impedance spectroscopy for various catalysts.



**S10** LSV curves for electrocatalytic HER efficiency