

## Supporting Information

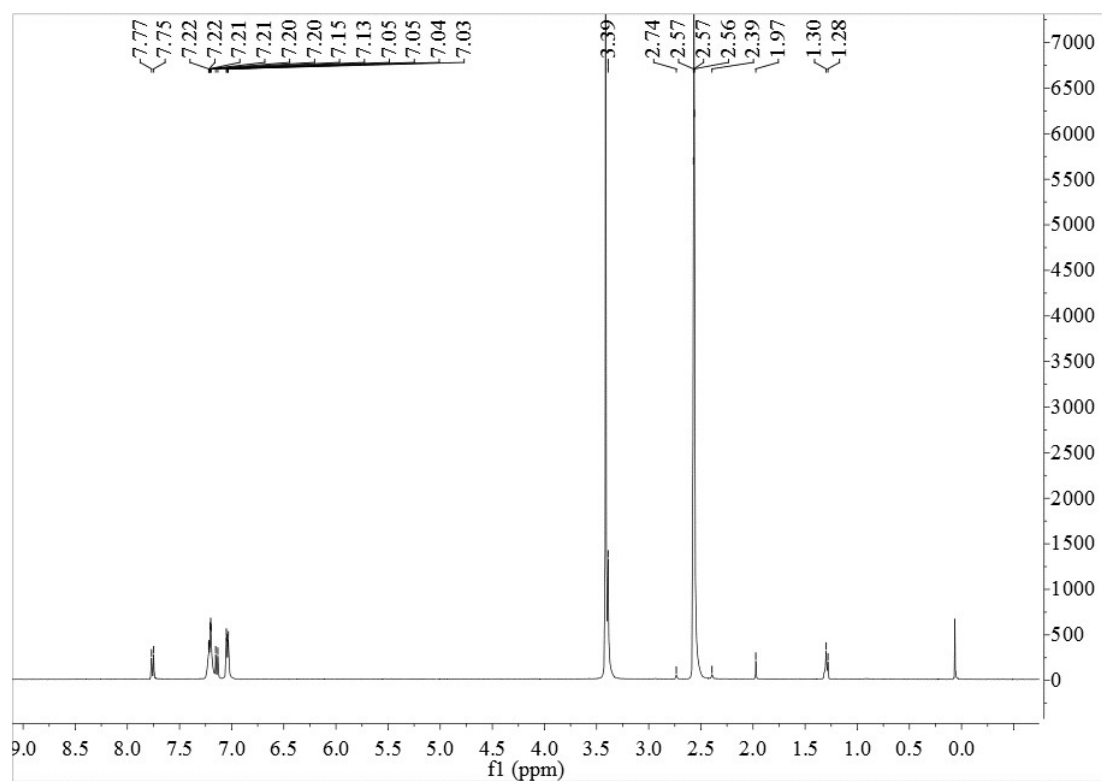
### Construction of glutathione-responsive paclitaxel prodrug nanoparticles for image-guided targeted delivery and breast cancer therapy

Weiwei Ma\*, Qiufeng Zhao, Shilong Zhu, Xinyue Wang, Chuangchuang Zhang,  
Daming Ma, Na Li\*, Yanyan Yin\*

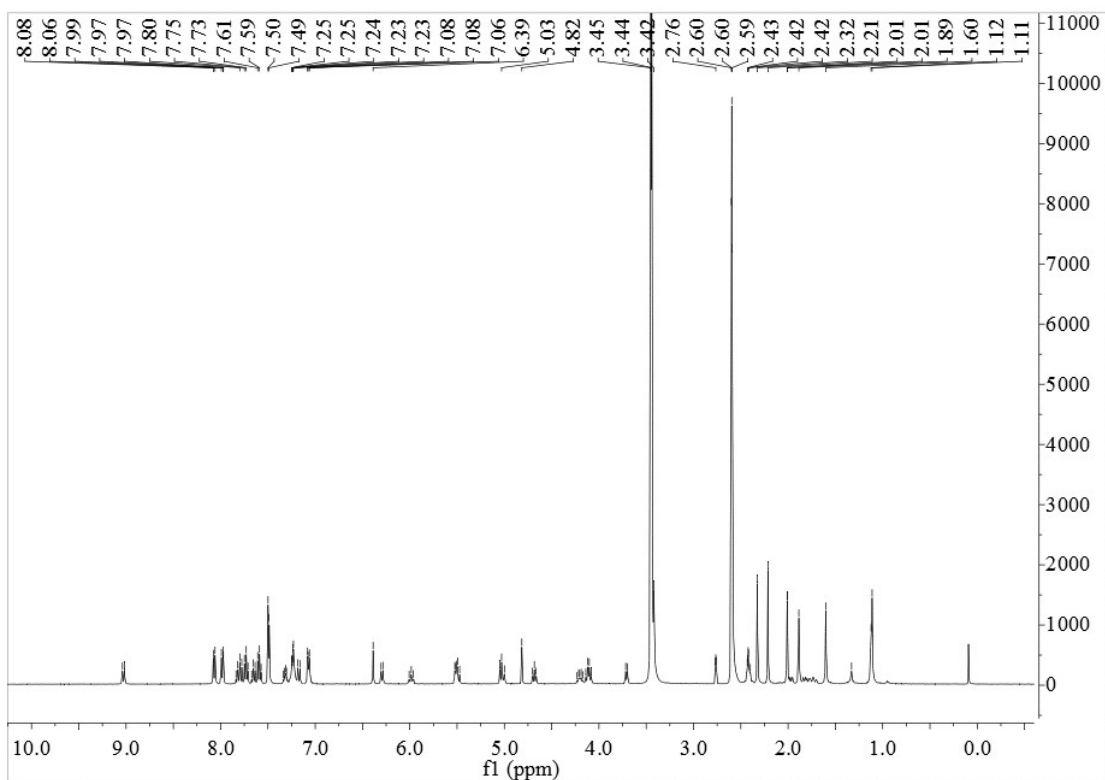
*School of Pharmacy, Xinxiang Medical University, Henan 453003, P. R. China*

\* Corresponding Author.

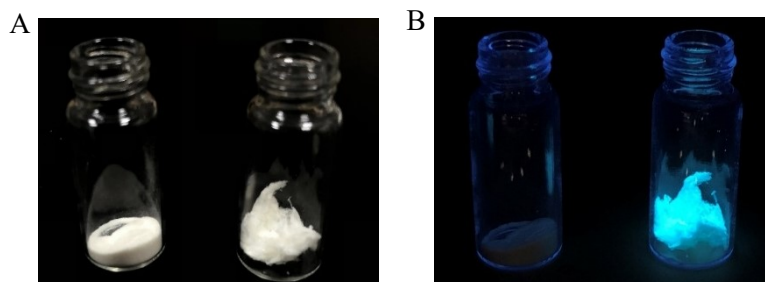
*E-mail address:* 081011@xxmu.edu.cn (W. Ma), 879623846@qq.com (N. Li),  
105772801@qq.com (Y. Yan)



**Figure S1.**  $^1\text{H}$  NMR of TPE-CS



**Figure S2.** <sup>1</sup>H NMR of TPE-CS-SS-PTX



**Figure S3.** Photographs of solid powders of TPE-CS and TPE-CS-SS-PTX taken under room lighting and UV illumination.

**Table S1**

The molecular weight and polydispersity of CS and TPE-CS-SS-PTX.

Polymer	Mn (kD)	Mw (kD)	Polydispersity
CS	27.34	30.12	1.10
TPE-CS-SS-PTX	30.78	44.85	1.46