

*Electric supporting information for*

**Effect of defect-healing treatment on layered silicate precursors  
toward well-defined cross-linked frameworks**

Yoshiaki Ito<sup>1</sup>, Keiichiro Nayuki<sup>2</sup>, Yukichi Sasaki<sup>3</sup>, Toru Wakihara<sup>1,4</sup>, Tatsuya Okubo<sup>1</sup>,  
Kenta Iyoki<sup>1,5,6\*</sup>

<sup>1</sup>*Department of Chemical System Engineering, The University of Tokyo, 7-3-1 Hongo, Bunkyo-ku,  
Tokyo 113-8656, Japan*

<sup>2</sup>*JEOL Ltd., Solution Promotion Department, 3-1-2 Musashino, Akishima, Tokyo 196-8558, Japan*

<sup>3</sup>*Japan Fine Ceramics Center, 2-4-1 Mutsuno, Atsuta-ku, Nagoya 456-8587, Japan*

<sup>4</sup>*Institute of Engineering Innovation, The University of Tokyo, 2-11-16 Yayoi, Bunkyo-ku, Tokyo  
113-8656, Japan*

<sup>5</sup>*Department of Environment Systems, The University of Tokyo, 5-1-5 Kashiwanoha, Kashiwa-shi,  
Chiba 277-8563, Japan*

<sup>6</sup>*Precursory Research for Embryonic Science and Technology (PRESTO), Japan Science and  
Technology Agency (JST), Kawaguchi, Saitama 332-0012, Japan*

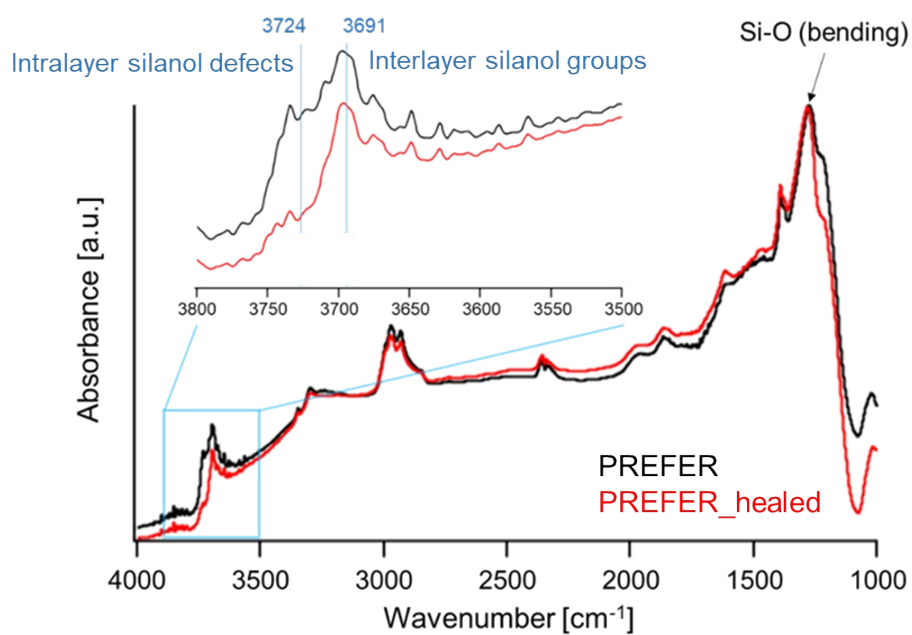


Fig.S1 DRIFT spectra of PREFER and PREFER\_healed at 250 °C

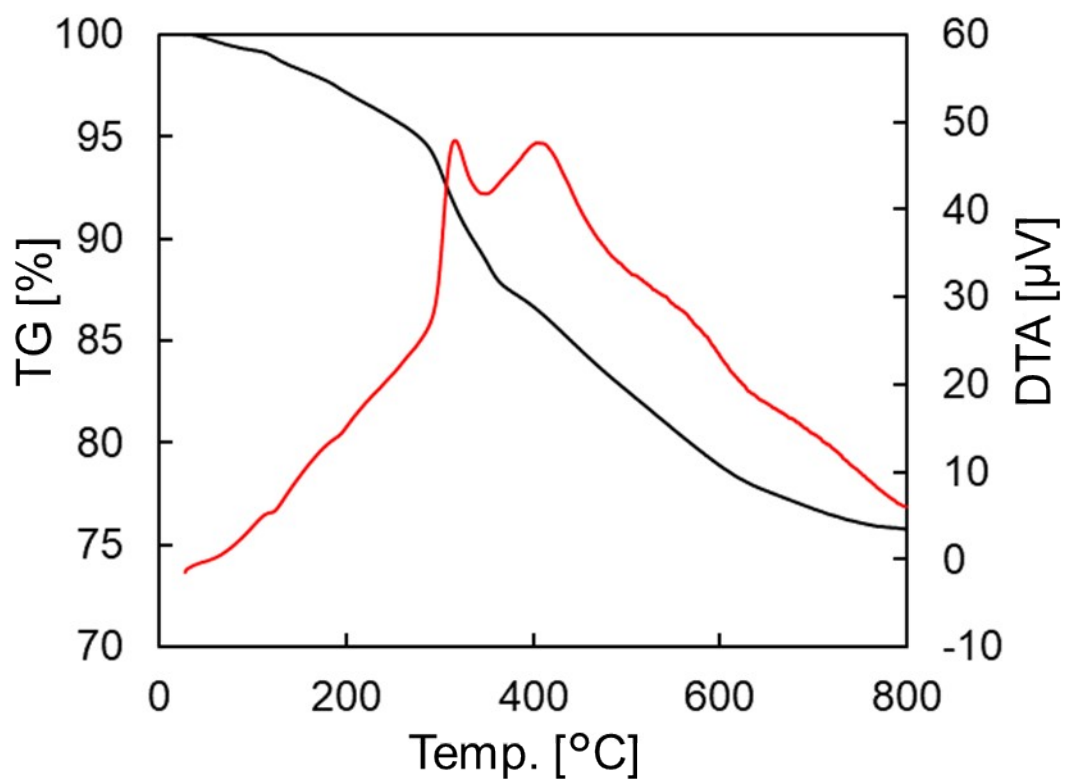


Fig.S2 TG (red) -DTA (black) curves of PREFER

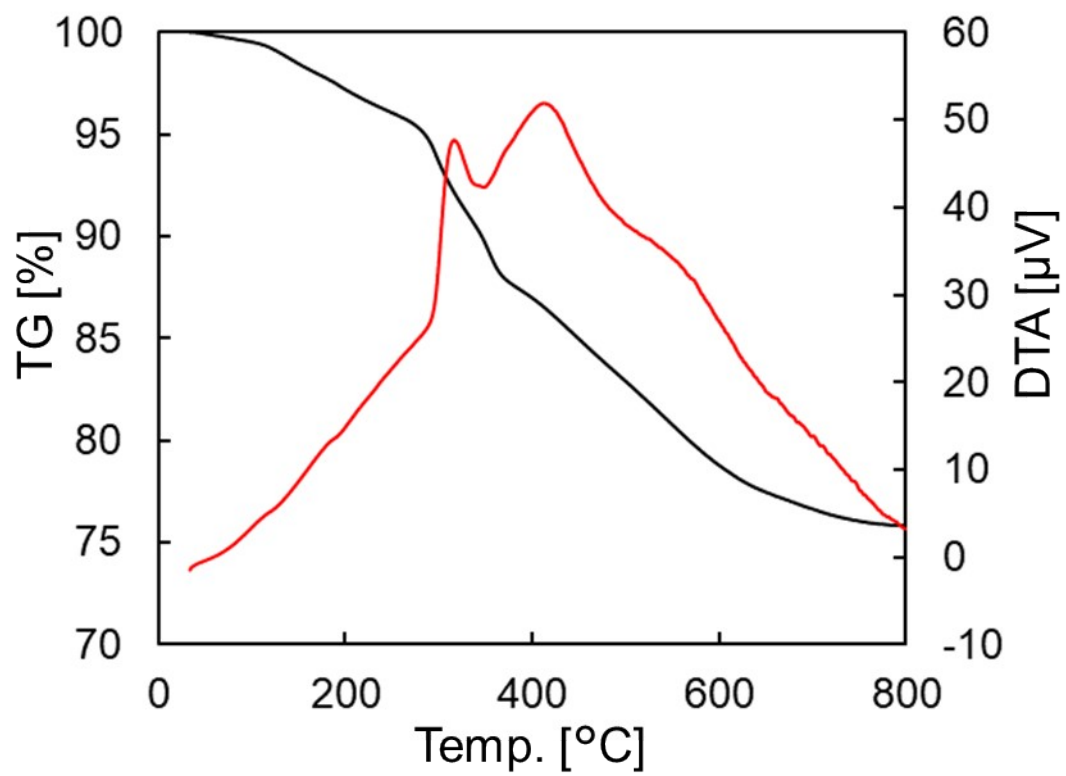


Fig.S3 TG (red) -DTA (black) curves of PREFER\_healed

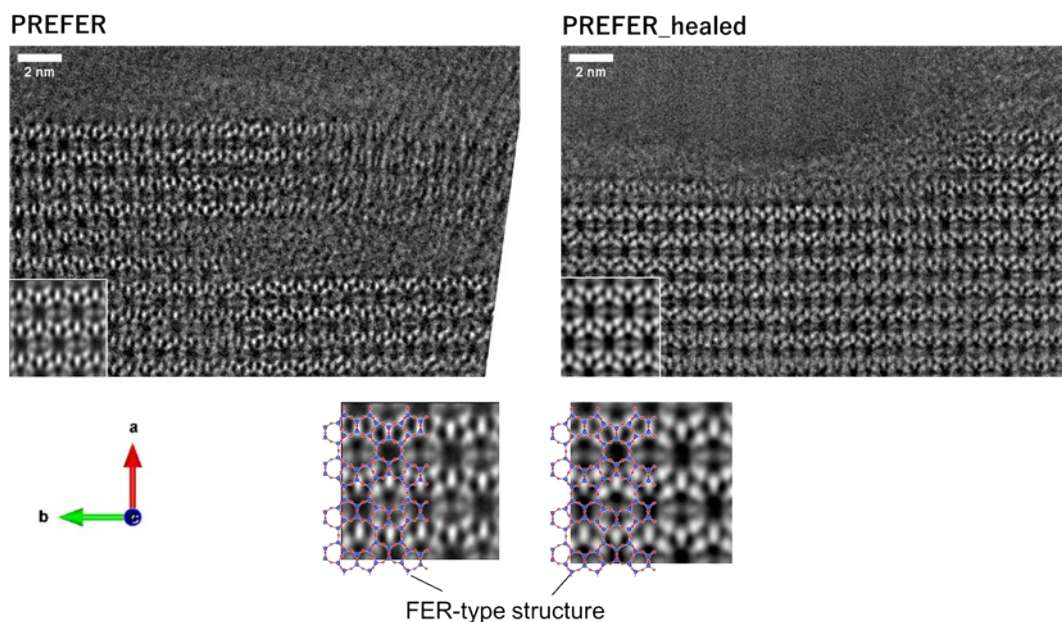


Fig.S4 TEM image of PREFER and PREFER\_healed

Table.S1 CHN Analysis

Sample	C/N
PREFER	4.77
PREFER_healed	4.92

Table.S2 Si/Fe ratio of samples

Sample	Si/Fe
PREFER_Fe	193
PREFER_healed_Fe	121