

Outer-sphere effects on the O₂ sensitivity, catalytic bias and catalytic reversibility of hydrogenases

Supporting information

Andrea Fasano, Vincent Fourmond and Christophe Léger

Laboratoire de Bioénergétique et Ingénierie des Protéines. CNRS, Aix Marseille Université, UMR 7281. Marseille. France.

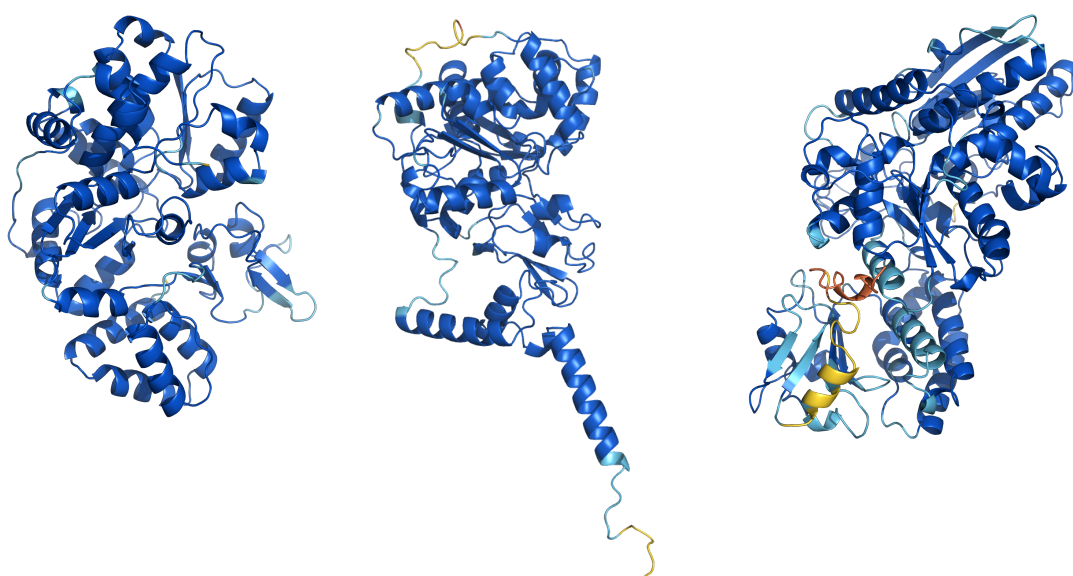


Figure S1: Confidence of the Alpha Fold models of CplII (left), Tam HydS (middle) and Cb (right). The structures are colored by the pLDDT (predicted local-distance difference) value: blue from 100 to 90 (high confidence); cyan from 90 to 70; yellow from 70 to 50 and orange below 50 (low confidence).