

## Supporting Information for:

### Membrane Fusogenic Liposomes Facilitate the Production of Immunostimulatory Extracellular Vesicles for Enhanced Cancer Therapy

Qi Xie<sup>1</sup>†, Yuan Gao<sup>1</sup>†, Wei Chen<sup>1</sup>, Haoyu Zhang<sup>1</sup>, Chuansheng Fu<sup>1</sup>, Samira Batur<sup>1</sup>, Yixuan Zhou<sup>1</sup>, Yang Li<sup>1</sup>, Jiao Zhang<sup>1</sup>, Zhiping Zhang<sup>1,2\*</sup> and Li Kong<sup>1,2\*</sup>

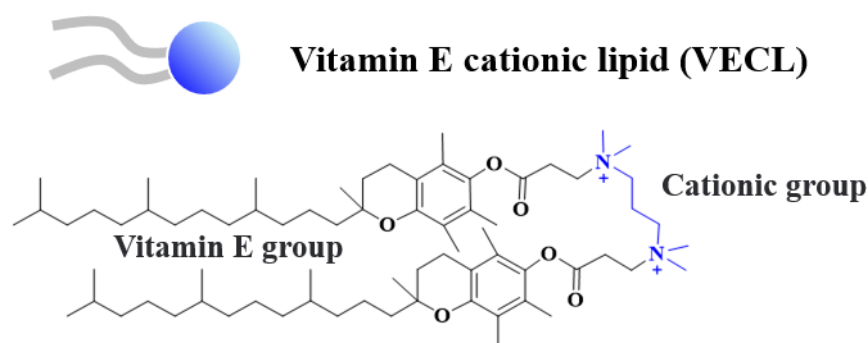
<sup>1</sup>Tongji School of Pharmacy, Huazhong University of Science and Technology, Wuhan 430030, China.

<sup>2</sup>Hubei Engineering Research Centre for Novel Drug Delivery System, Huazhong University of Science and Technology, Wuhan 430030, China.

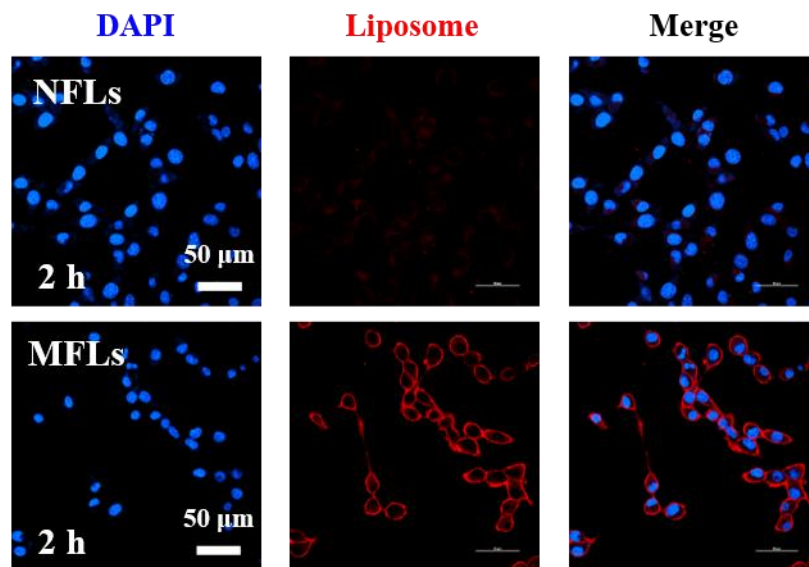
\*Corresponding author. E-mail: zhipingzhang@mail.hust.edu.cn; kongl@hust.edu.cn

†These authors contributed equally to this work.

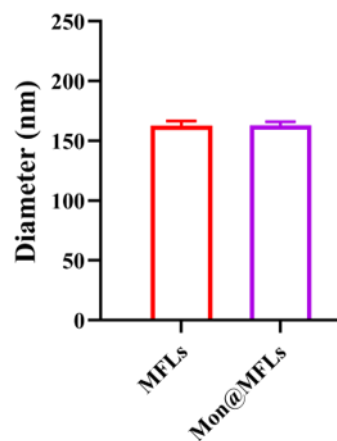
This file includes: Figure S1 to S5.



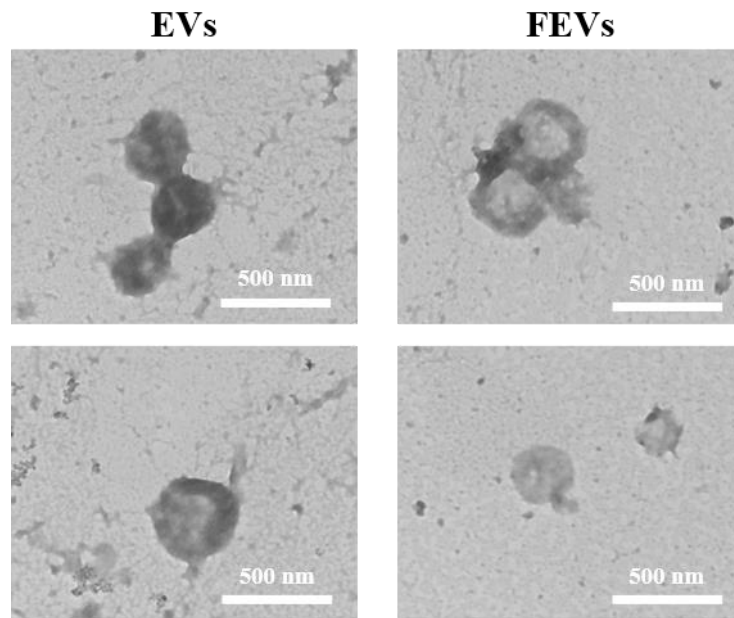
**Figure S1.** The structure of VECL.



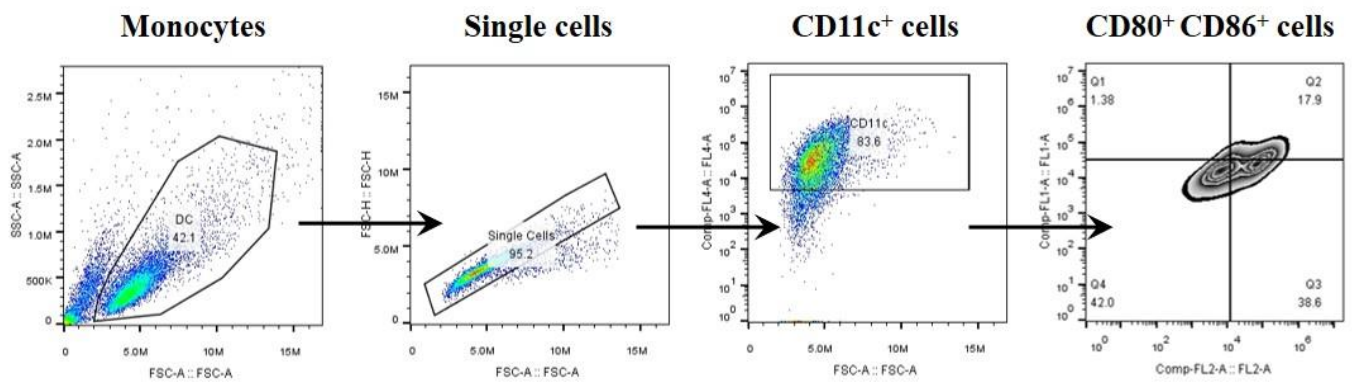
**Figure S2.** The CLSM images of DSPE-RB-labeled MFLs or NFLs (red) incubated with MC38 cells (DAPI, blue) at 2 h. Scale bar = 50 μm.



**Figure S3.** The particle size of MFLs and Mon@MFLs ( $n = 5$ ). Data are represented as mean  $\pm$  SD.



**Figure S4.** The TEM images of EVs and FEVs. Scale bar = 500 nm.



**Figure S5.** The flow cytometry gating process of BMDCs after different treatments.