

**Development of a Cellulose Acetate-Based Polymeric Membrane for the Extraction and
Quantification of Fluoxetine and Norepinephrine in Biological Samples**

Seyedeh Susan Sayyedi ^a, Tahere Khezeli*^a, Ali Daneshfar ^b

^a *Department of Chemistry, Faculty of Science, Ilam University, Ilam, 69315-516, Iran, E-mail:*

t.khezeli@ilam.ac.ir.

^b *Department of Chemistry, Lorestan University, Khoramabad, Iran*

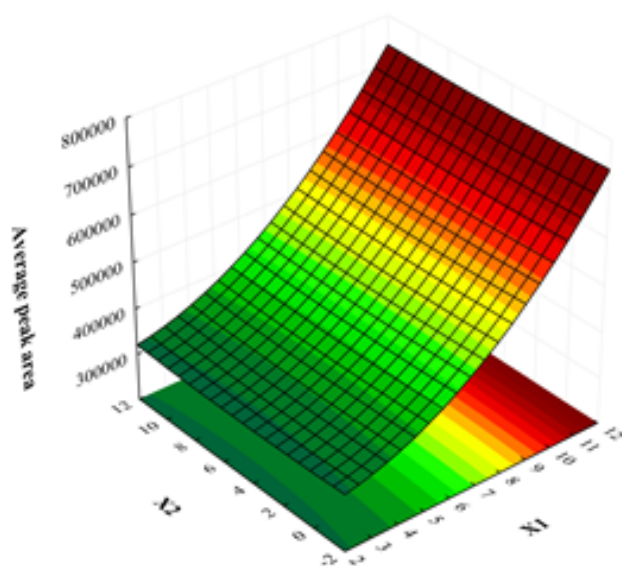
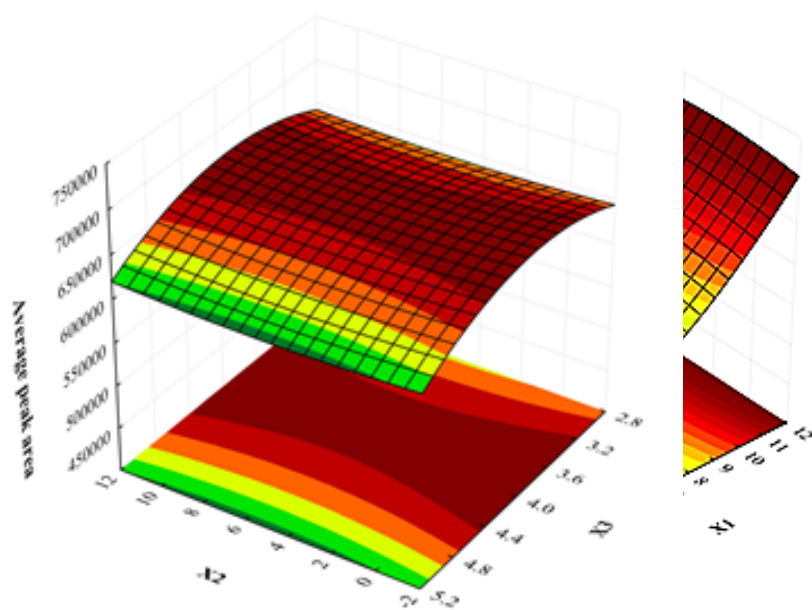
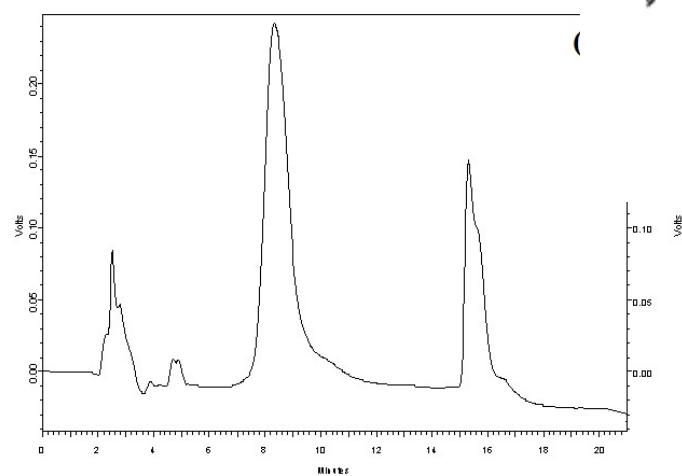


Fig. S1. Three dimension plots of CCD.



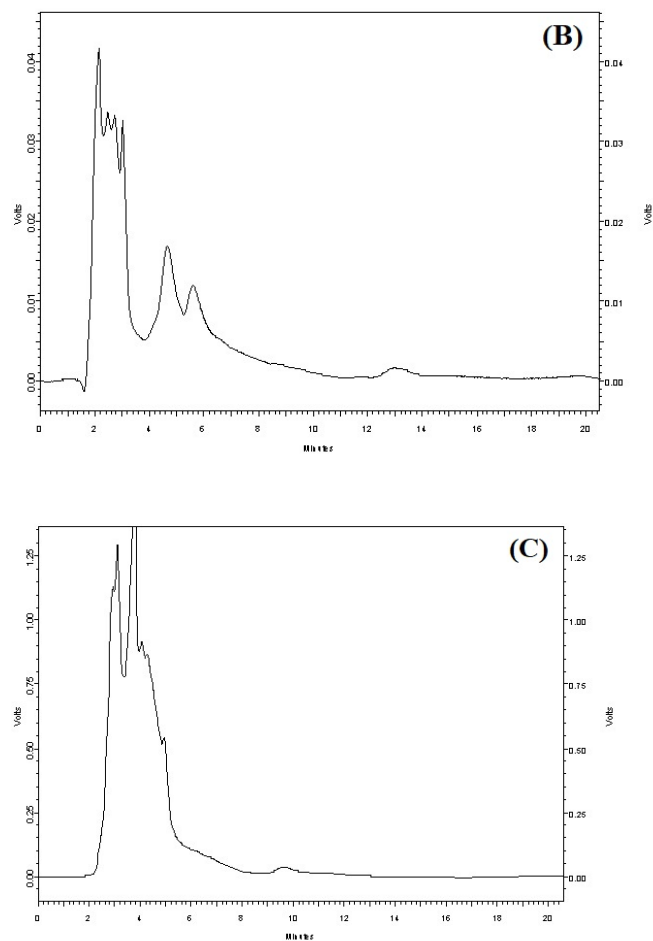


Fig. S2. Chromatograms of NE (retention time NE: 8.3 min; retention time FL: 15.2 min) and FL standard solution (A), urine without spike analytes (b), and serum without spike

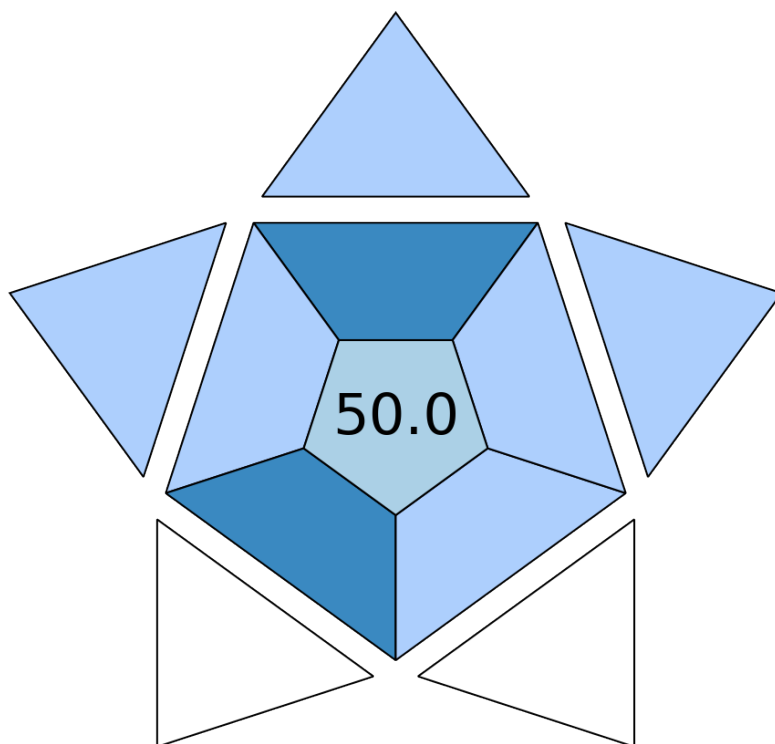


Fig. S3. Pictogram of BAGI analysis.