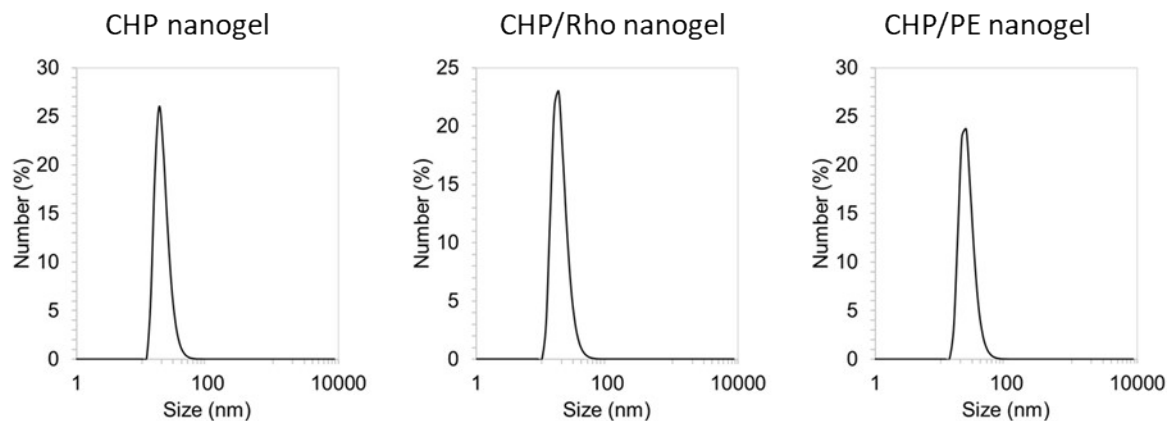
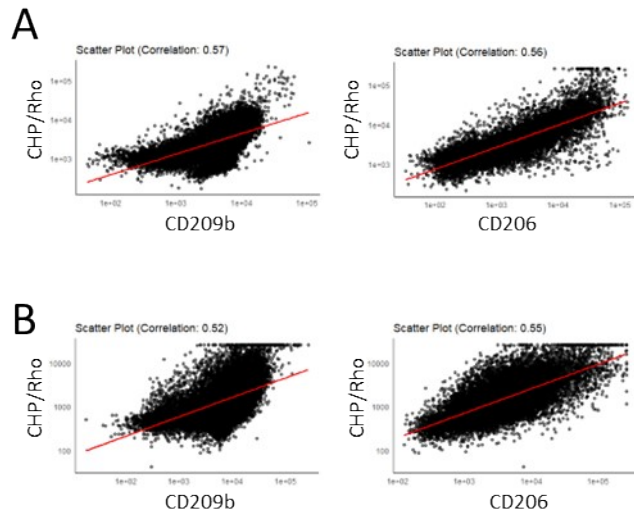


## Supporting Information:



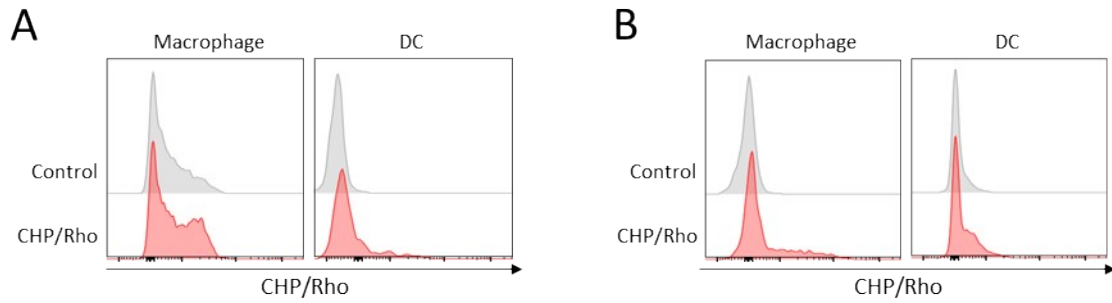
**Supplementary figure 1. Histograms of CHP nanogel, CHP/Rho nanogel, and CHP/PE nanogel**

The size of CHP nanogel, CHP/Rho, and CHP/PE was measured using dynamic light scattering analysis.



**Supplementary figure 2. Correlation between CHP uptake and CD209b or CD206 expression.**

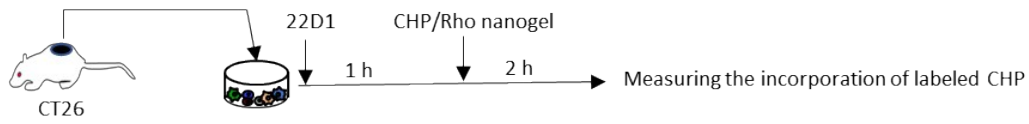
BALB/c mice bearing CT26 (A) or CMS5a (B) tumors were intravenously injected with the CHP/Rho nanogel, and the tumors were subsequently harvested. The uptake of labeled CHP by CD11b-positive cells was measured using flow cytometry. Scatter plots presenting representative data illustrating the correlation between CHP uptake and CD209b and CD206 expression levels.



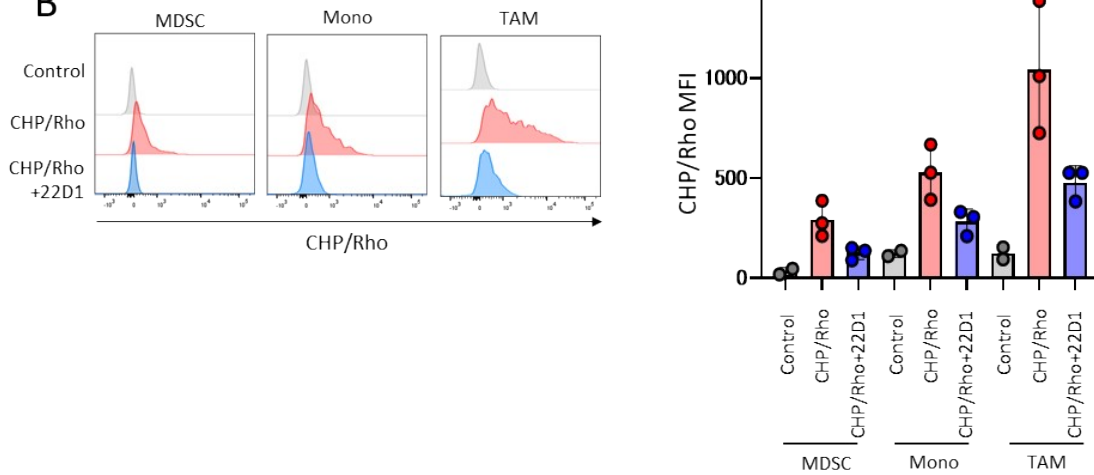
**Supplementary figure 3. Macrophages and dendritic cells in the spleen and lymph nodes do not take up CHP nanogels.**

CMS5a tumor-bearing BALB/c mice were intravenously injected with CHP/Rho nanogel, and spleen (A) and tumor-draining lymph nodes (B) were harvested. The uptake of labeled CHP nanogel in macrophages or dendritic cells was measured by flow cytometry.

A



B



**Supplementary figure 4. TAMs uptake the CHP nanogel via CD209b in an ex vivo model.**

(A) Tumors were harvested from CT26 tumor-bearing BALB/c mice and cultured in a medium containing the CHP/Rho nanogel. (B) Uptake of labeled CHP nanogels by immune cells measured using flow cytometry. Histograms represent representative data for CHP incorporation. Data are presented as the means  $\pm$  standard error of the mean (SEM). \*\* $p < 0.01$ , \*\*\*\* $p < 0.0001$ , analyzed using a one-way ANOVA.