

Supporting Information

**TPP-coated Mo-doped W₁₈O₄₉ Biodegradable Nanomaterials with
Mitochondria-Targeting and Responsive Properties for Synergistic
Photothermal/Chemodynamic/Chemotherapy**

Yingjuan Ren, Wenhui Yi, Jie Gao, Nan Wang*, Di Zhuang*

School of Electronic Science and Engineering, Faculty of Electronic and Information
Engineering, Xi'an Jiaotong University, Xi'an, Shannxi 710049, China.

School of Pharmacy, Xi'an Jiaotong University, Xi'an 710061, Shaanxi, China

*Corresponding authors E-mail address: yiwenhui@mail.xjtu.edu.cn
&wangnan2014@mail.xjtu.edu.cn

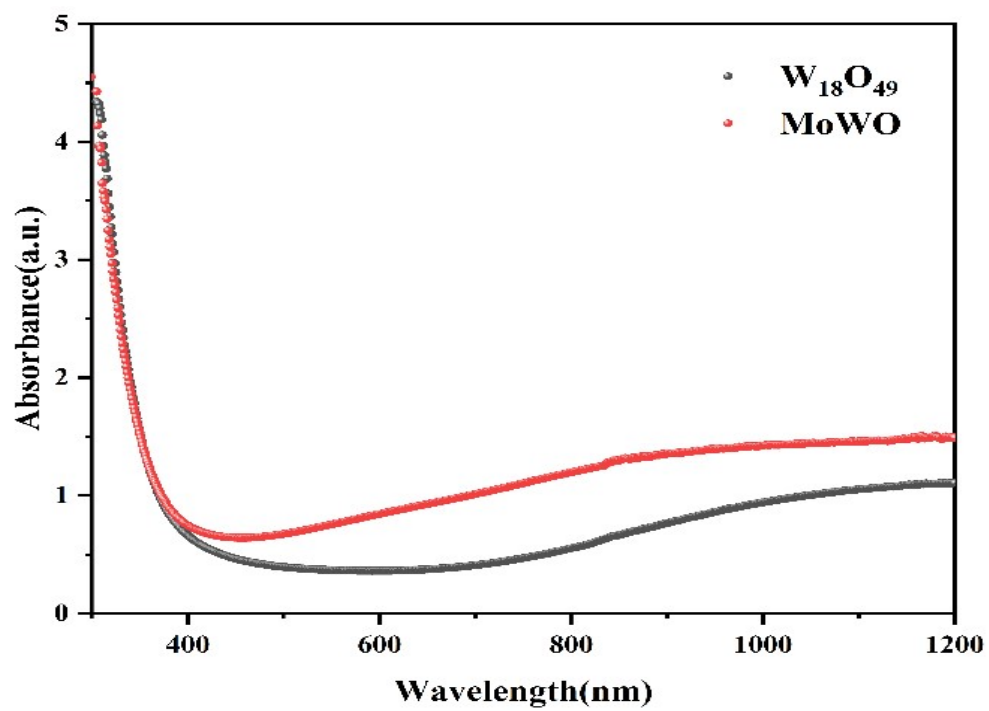


Figure. S1. UV-Vis-NIR spectra of MoWO NBs and $W_{18}O_{49}$ after 1064 nm laser irradiation (0.75 W/cm², 10 min, 1064nm).

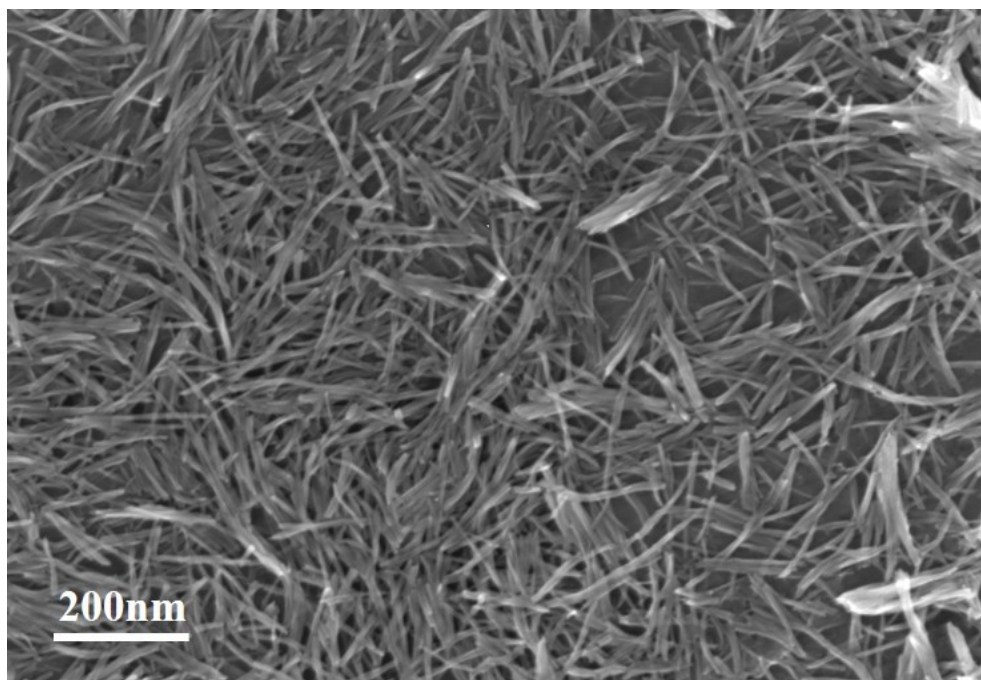


Figure. S2. SEM image of MoWO NBs (bar at 200 nm)

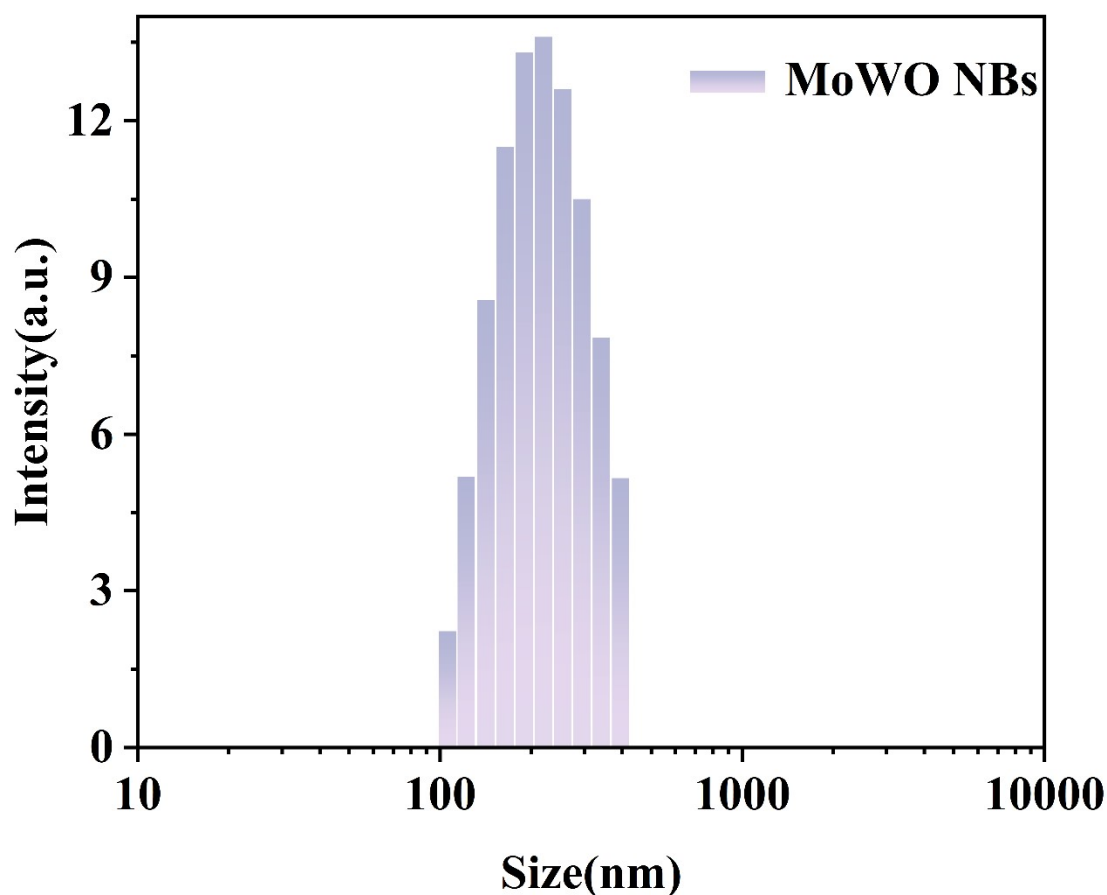


Figure. S3. Dynamic light scattering (DLS) size distribution profiles of MoWO.

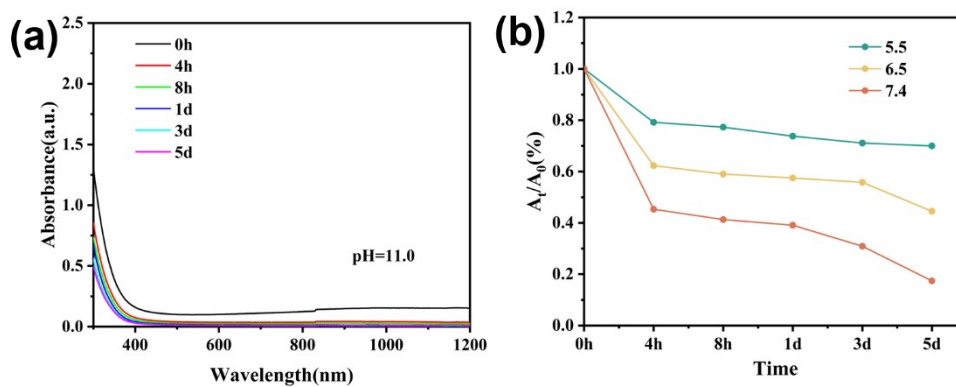


Figure. S4. (a) Degradation procedure of MoWO NBs dispersed in PBS at pH values 11, as measured by absorption spectra. (b) Variation of the absorption ratios (A_t/A_0) of MoWO NBs in PBS (pH=5.5、6.5 and 7.4).

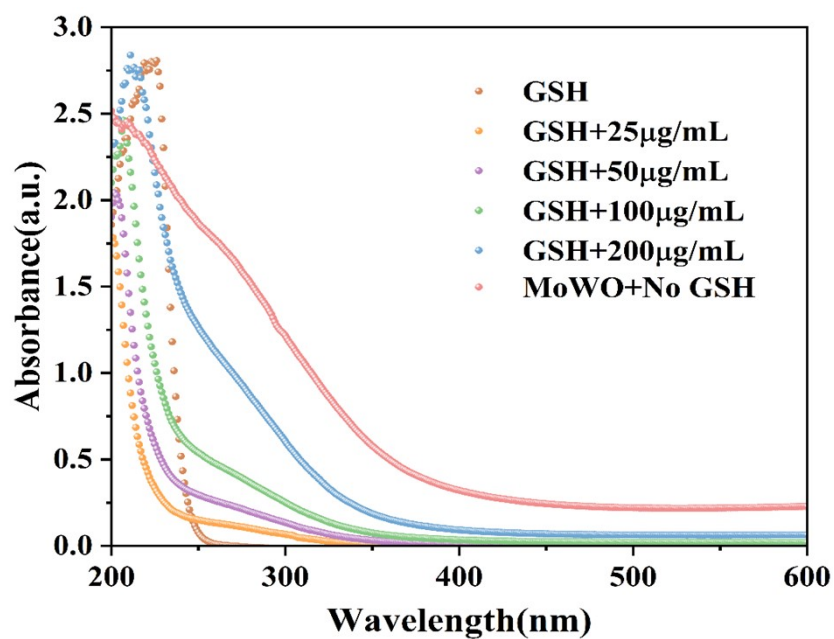


Figure. S5. Absorption spectrum changes after different concentrations of MoWO added to GSH.

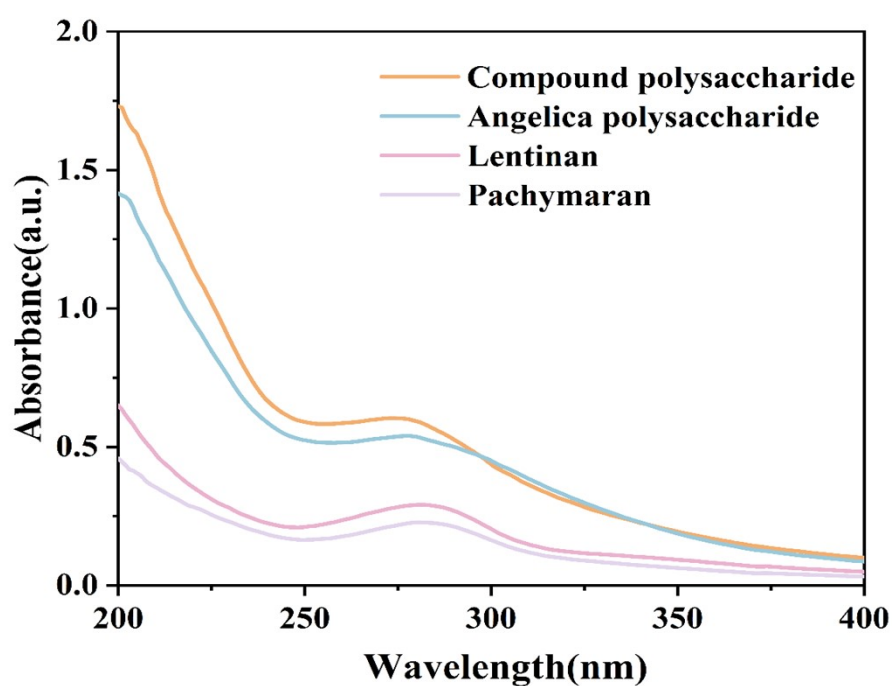


Figure. S6. Formation of compound polysaccharides (CP).

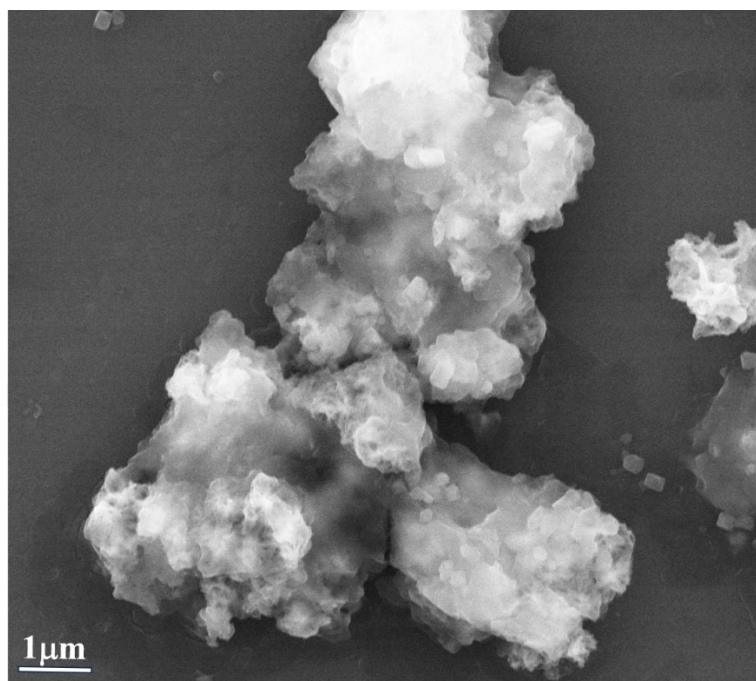


Figure. S7. SEM image of TPP-MoWO@DOX@CP.

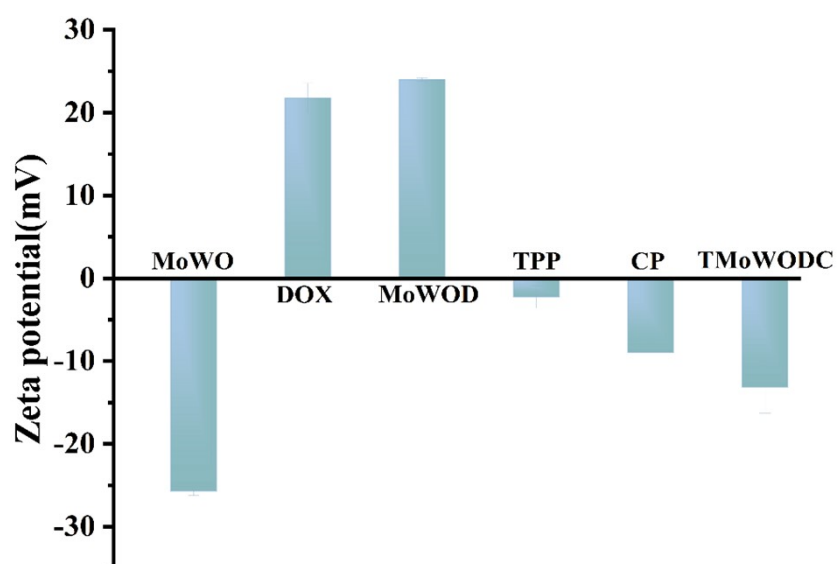


Figure. S8. Zeta potentials of during the construction of the drug delivery system TPP-MoWO@DOX@CP.

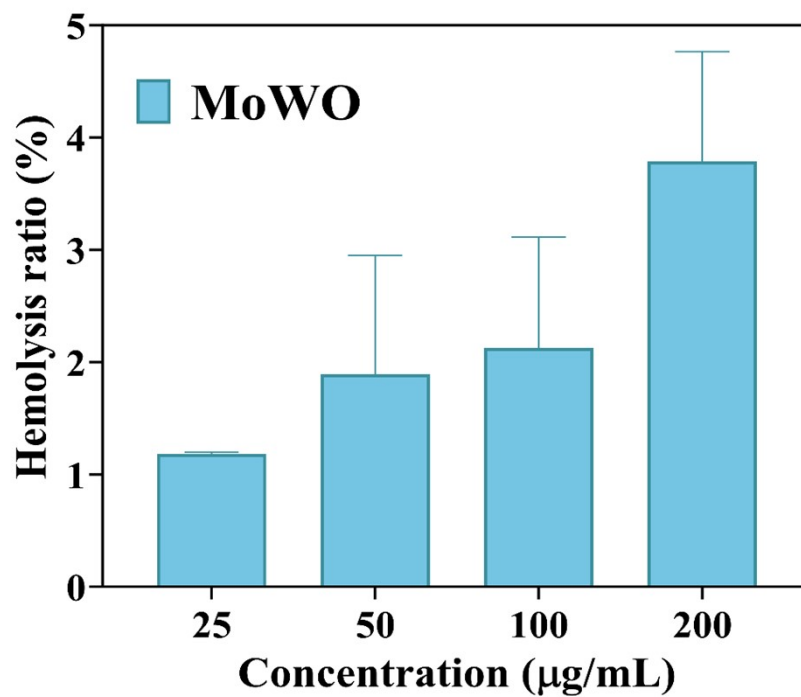


Figure. S9. Hemolysis ratio at different concentrations (25, 50, 100, 200 μg/mL) of MoWO NBs solution.

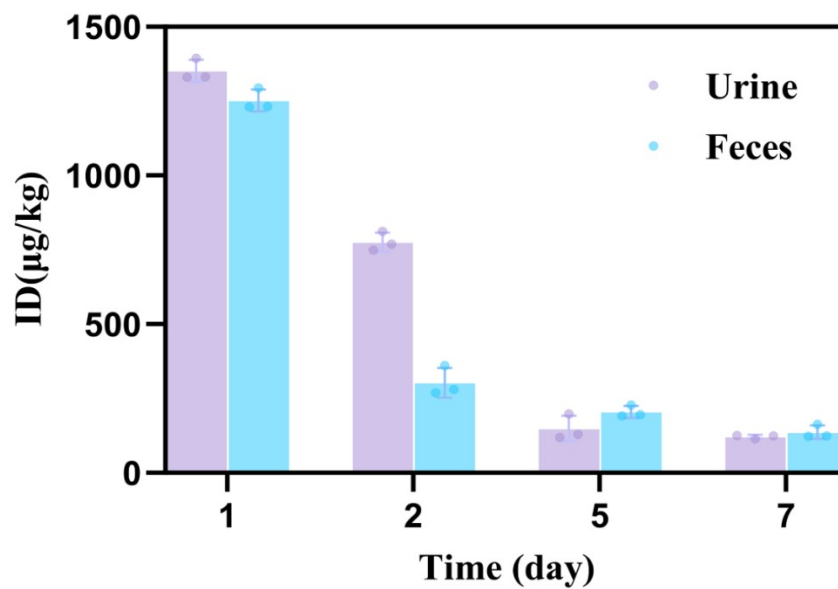


Figure. S10. The biodistribution of W (dose D) of W per kilogram of tissues) in urine and feces collected at various time points (n = 5).