

Supplementary Information

A pH-Ultrasensitive Membranolytic Polymer-Assisted Delivery System for Enhanced siRNA Delivery

Yue Yu^{a,‡}, Houbing Zhang^{b,‡}, Xianzhu Yang^{b,c}, Jun Wang^{b,c}, Menghua Xiong^{b,d,*},
Xiaojiao Du^{a,c,*}

^aSchool of Medicine, South China University of Technology, Guangzhou 510006, P.R. China

^bSchool of Biomedical Sciences and Engineering, South China University of Technology, Guangzhou International Campus, Guangzhou 511442, P.R. China

^cNational Engineering Research Center for Tissue Restoration and Reconstruction, South China University of Technology, Guangzhou 510006, P.R. China

^dGuangdong Provincial Key Laboratory of Biomedical Engineering, South China University of Technology, Guangzhou 510006, P. R. China

[‡]These authors contributed equally to this work.

*Corresponding authors.

E-mail addresses: duxjz@scut.edu.cn (X. Du); xiongmh@scut.edu.cn (M. Xiong)

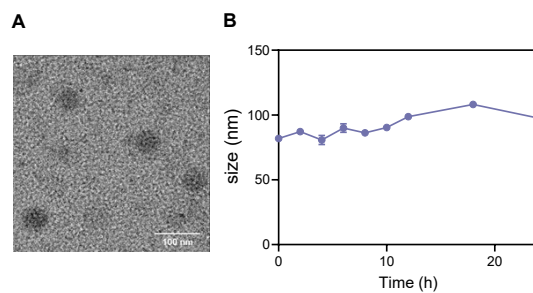


Figure S1. The characterization of NP_{Bn20}/siRNA. (A) Morphology observed by TEM. (B) The average size of NP_{Bn20}/siRNA incubated in PBS containing 10% FBS for different time periods ($n = 3$).

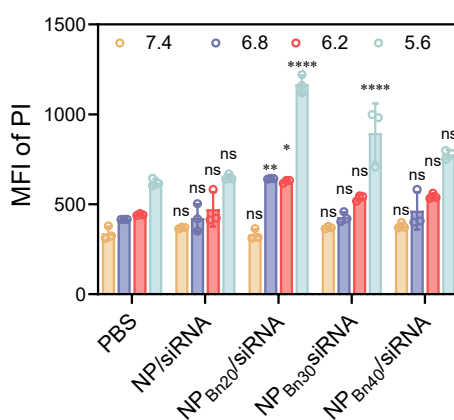


Figure S2. Quantitative analysis of membrane damage induced by NP/siRNA and NP_{BnX}/siRNA following 2 hours of incubation with B16-F10 cells using flow cytometry with PI staining. Statistical significance was determined by comparing each formulation under identical pH conditions to the PBS control group. ns, not significant; * $p < 0.05$; ** $p < 0.01$; **** $p < 0.0001$.

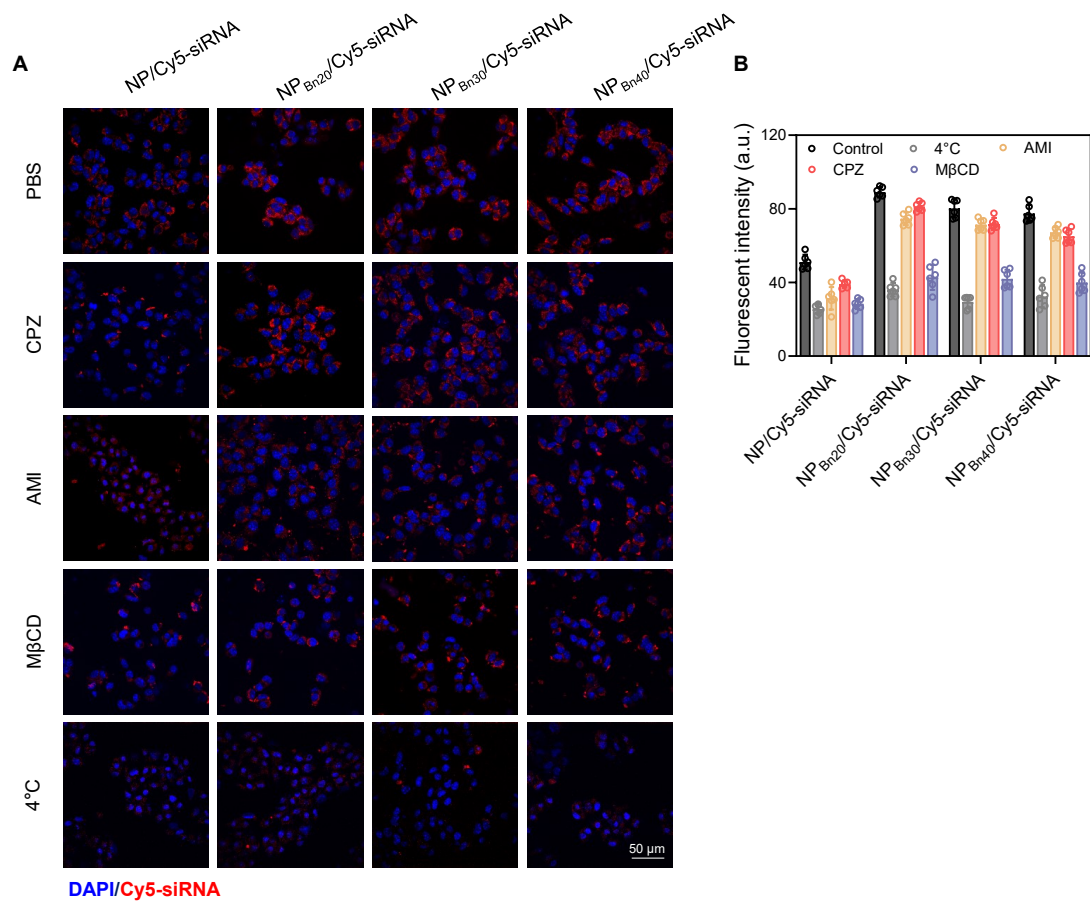


Figure S3. Cellular uptake of NP/Cy5-siRNA and NP_{BnX}/Cy5-siRNA in B16-F10 cells pretreated with various inhibitors or incubated at 4°C. (A) Representative laser confocal scanning microscopy images; (B) Quantitative analysis of fluorescence intensity in the CLSM images.

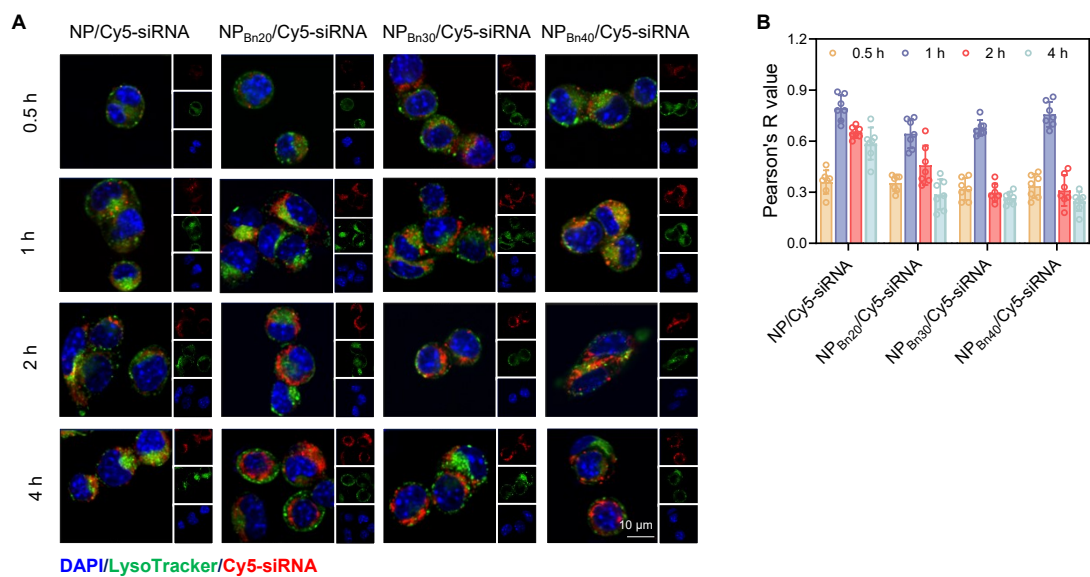


Figure S4. The colocalization of NP/Cy5-siRNA or NP_{BnX}/Cy5-siRNA with lysosomes at different time points. (A) Representative laser confocal microscopy images; (B) Pearson correlation

coefficient.

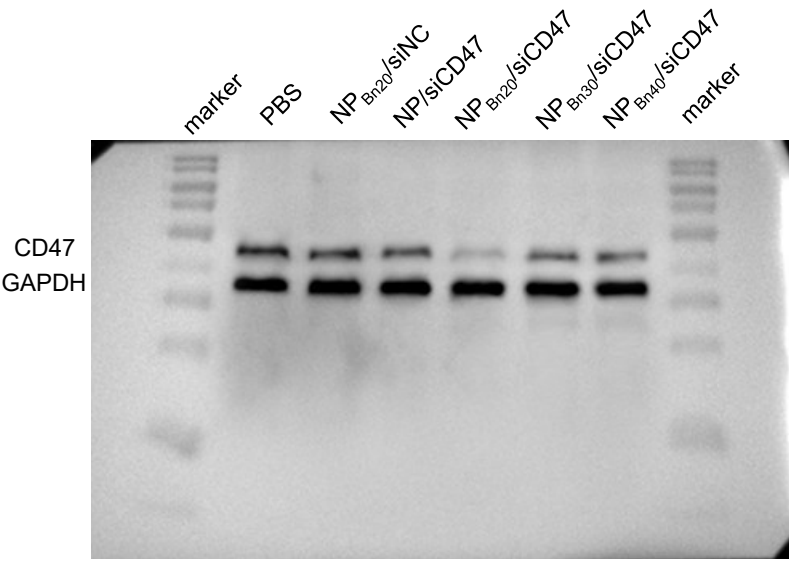


Figure S5. The uncropped and unprocessed western blot image analyzes the expression of CD47 in B16-F10 cells.

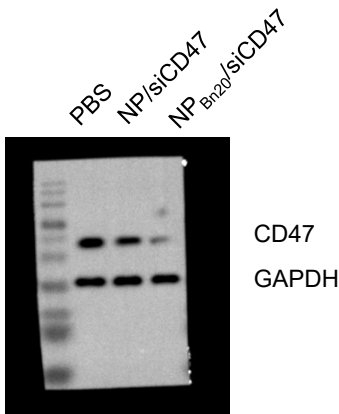


Figure S6. The uncropped and unprocessed Western blot image analyzes the expression of CD47 in tumor tissues.

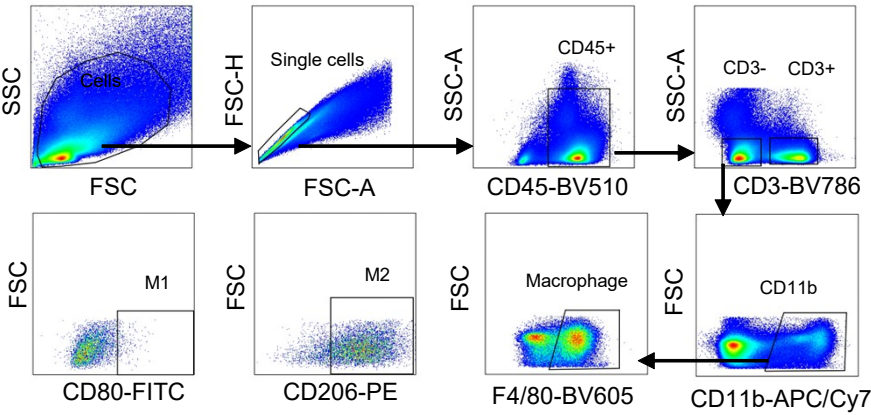


Figure S7. Flow cytometry gating strategy for M1-like macrophages (CD11b⁺F4/80⁺CD80⁺) and

M2-like macrophages (CD11b⁺F4/80⁺CD206⁺) in tumor tissues after treatments.