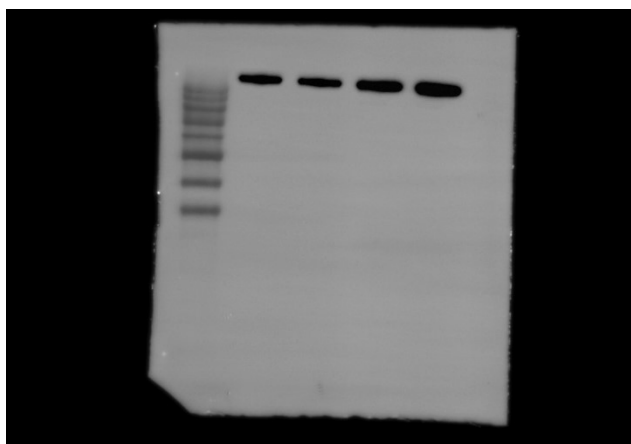
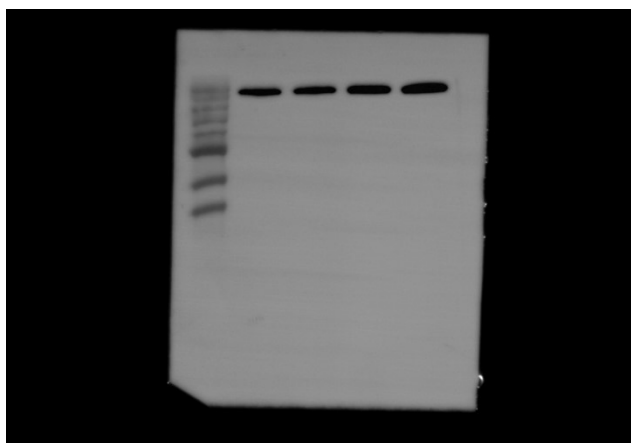


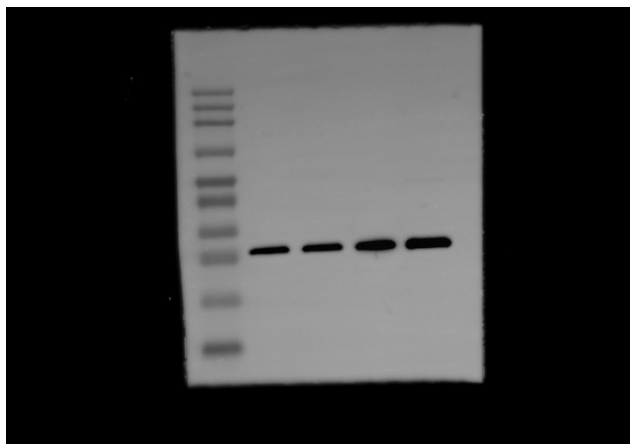
This is the complete uncropped gel and blot image of γ -H2AX, showing from left to right: PBS, PBS + X-ray, NOS, NOS + X-ray.



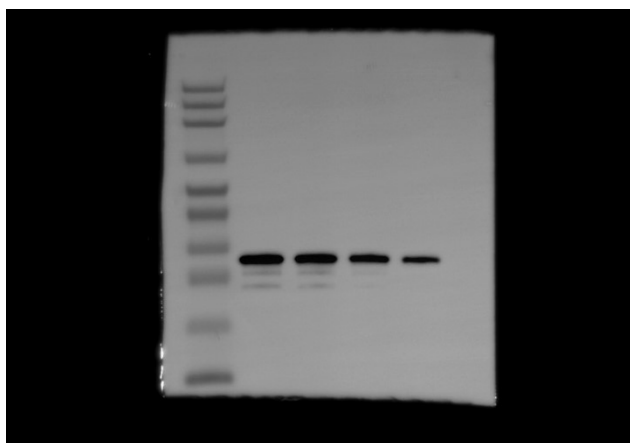
This is the complete uncropped gel and blot image of P-ATM.



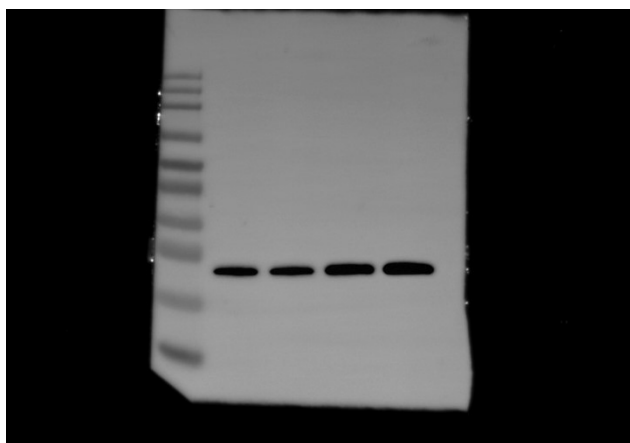
This is the complete uncropped gel and blot image of P-ATR.



This is the complete uncropped gel and blot image of BAX.



This is the complete uncropped gel and blot image of Bcl-2.



This is the complete uncropped gel and blot image of C-Caspase-3.