

Supplementary Information: Azurin-Based Peptide p28 Disrupts p53-HDM2 Interactions: Insights from In Silico Studies

Albin Joy,^a Anand Srivastava,^b and Rajib Biswas^{*c}

Supplementary Information

The temporal fluctuations in pressure for the ten simulated structures are depicted below. These results show that the pressure remains stable throughout the simulations, indicating proper equilibration of all systems.

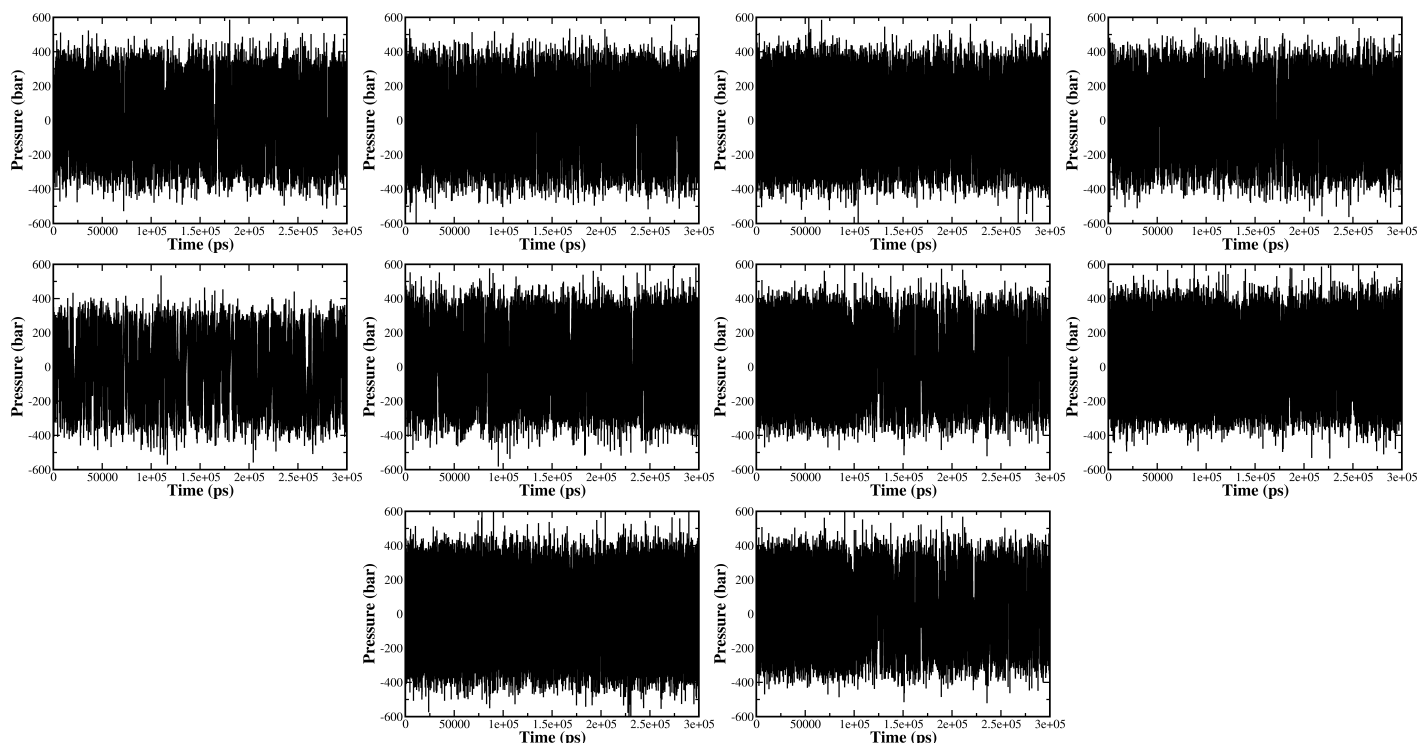


Fig. S1 Temporal evolution of pressure during the NVT simulations for the ten docked complexes (D1–D10), showing stable pressure profiles throughout the trajectories.

^a Department of Chemistry, Indian Institute of Technology Tirupati, Yerpedu, Tirupati, Andhra Pradesh, India. 517619.

^b Molecular Biology Unit, Indian Institute of Science, Bangalore, Karnataka, India. 560012.

^c Department of Chemistry, Indian Institute of Technology Tirupati, Yerpedu, Tirupati, Andhra Pradesh, India. 517619. E-mail: rajib@iittp.ac.in