

Supplementary material

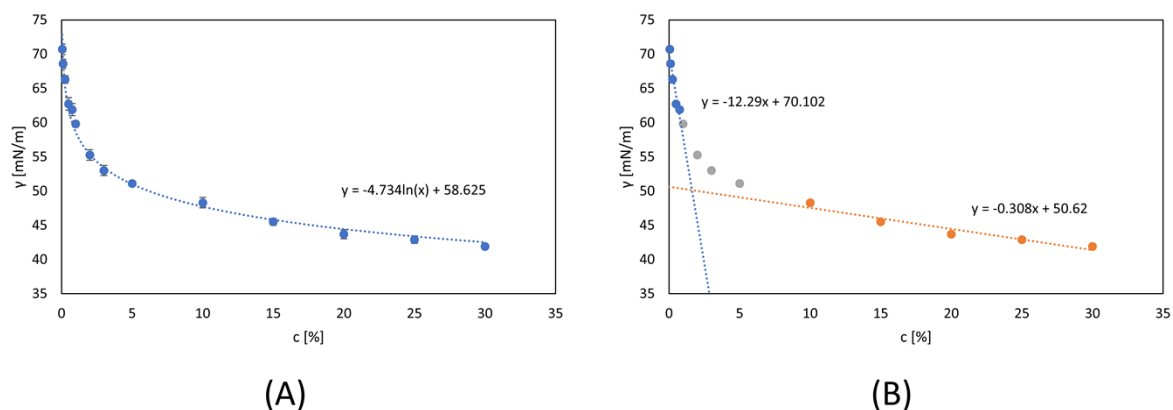


Figure S1. (A) Logarithmic model of dependence of the average surface tension values, with standard deviations, on GA concentration. (B) The dependence of the average surface tension values on GA concentration is fitted with two straight lines.

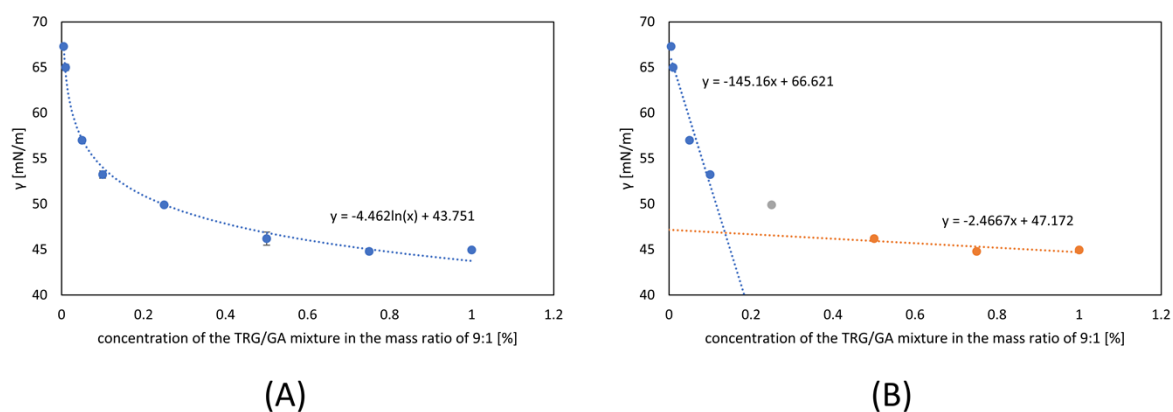
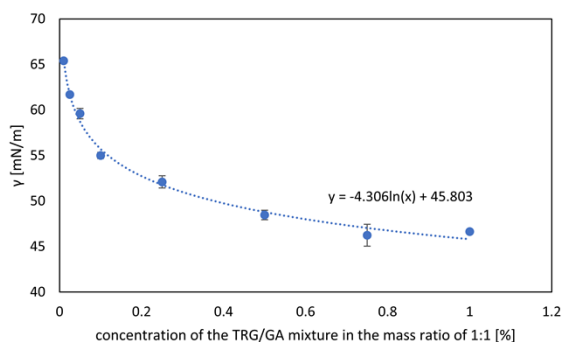
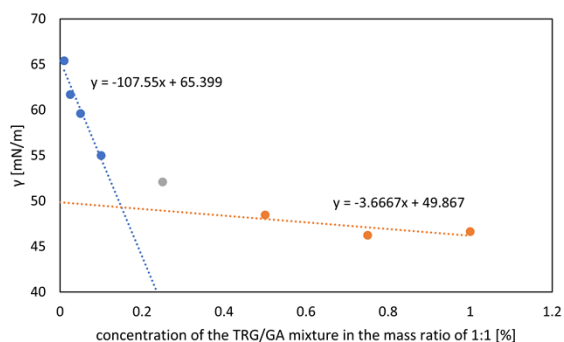


Figure S2. (A) Logarithmic model of dependence of the average surface tension values, with standard deviations, on the concentration of the tragacanth gum (TRG) and gum arabic (GA) mixture in the mass ratio of 9:1. (B) The dependence of the average surface tension values on the concentration of the TRG and GA mixture in the mass ratio of 9:1 is fitted with two straight lines.

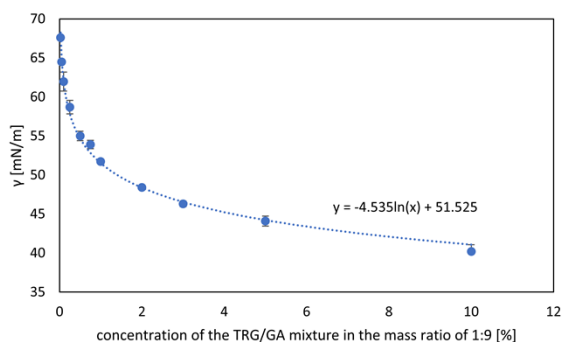


(A)

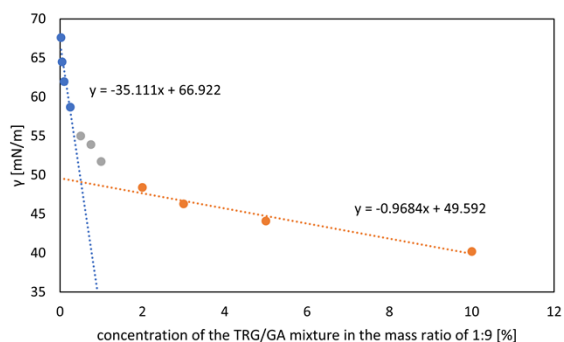


(B)

Figure S3. (A) Logarithmic model of dependence of the average surface tension values, with standard deviations, on the concentration of the tragacanth gum (TRG) and gum arabic (GA) mixture in the mass ratio of 1:1. (B) The dependence of the average surface tension values on the concentration of the TRG and GA mixture in the mass ratio of 1:1 is fitted with two straight lines.



(A)



(B)

Figure S4. (A) Logarithmic model of dependence of the average surface tension values, with standard deviations, on the concentration of the tragacanth gum (TRG) and gum arabic (GA) mixture in the mass ratio of 1:9. (B) The dependence of the average surface tension values on the concentration of the TRG and GA mixture in the mass ratio of 1:9 is fitted with two straight lines.

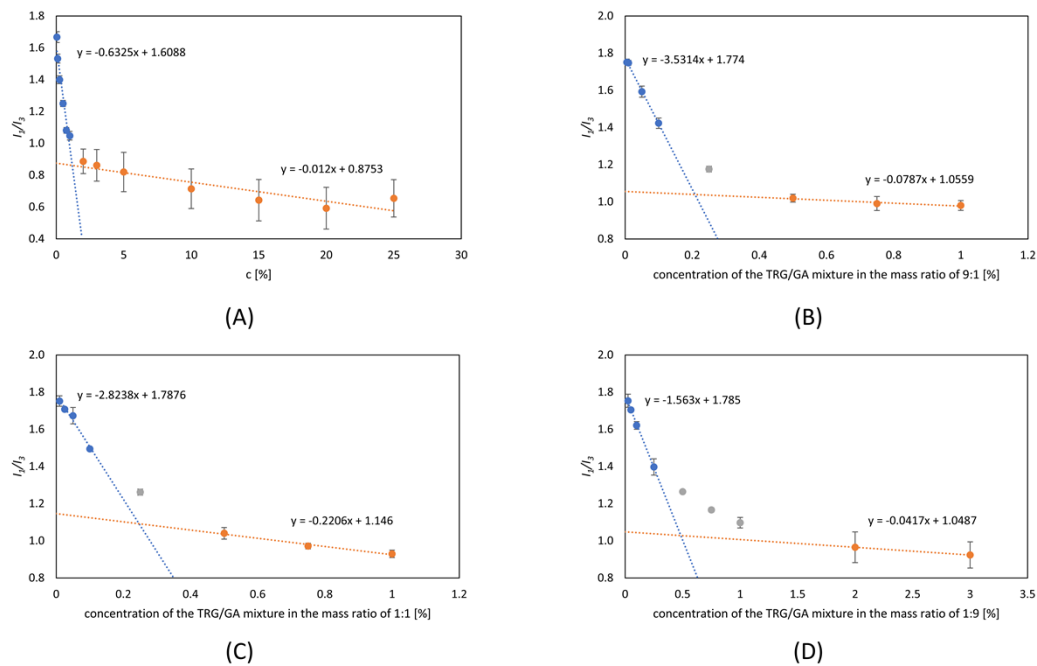


Figure S5. (A) Dependence of the average values with standard deviations of the I_1/I_3 ratio on gum arabic (GA) concentration. (B), (C) and (D) show the dependence of the average values of the I_1/I_3 ratio on the concentration of mixtures with different mass ratios of tragacanth gum (TRG) and GA: 9:1, 1:1, and 1:9, respectively.

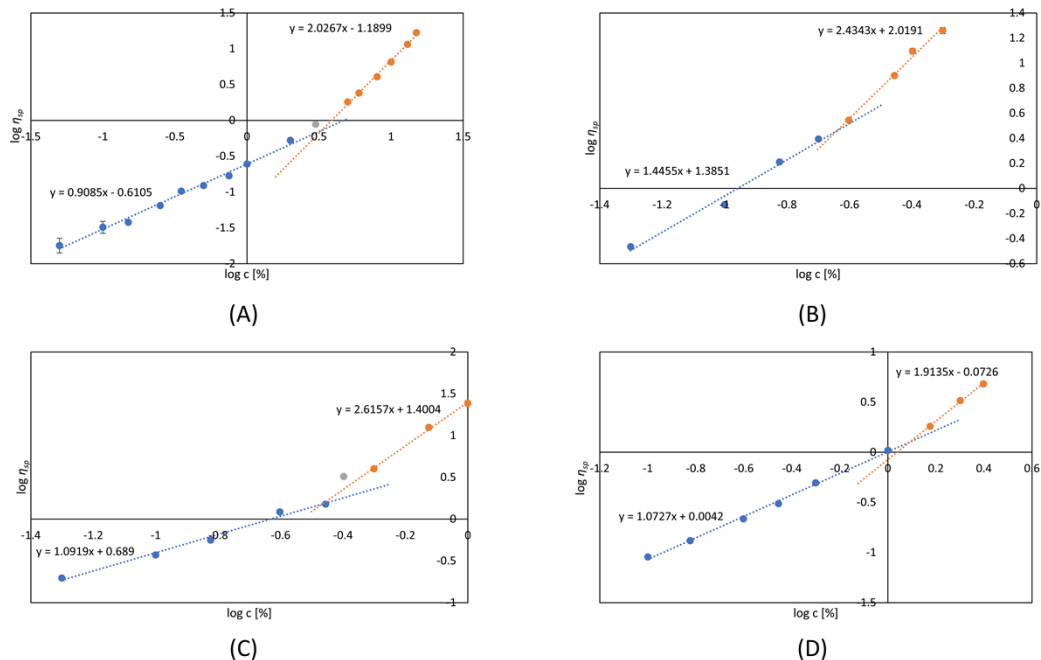


Figure S6. (A) Dependence of specific viscosity (η_{sp}) on gum arabic (GA) concentration in a double logarithmic plot. (B), (C) and (D) show the dependence of η_{sp} on the concentration of mixtures with different mass ratios of tragacanth gum (TRG) and GA: 9:1, 1:1, and 1:9,

respectively, in a double logarithmic plot. Average values of η_{sp} with standard deviations are presented.

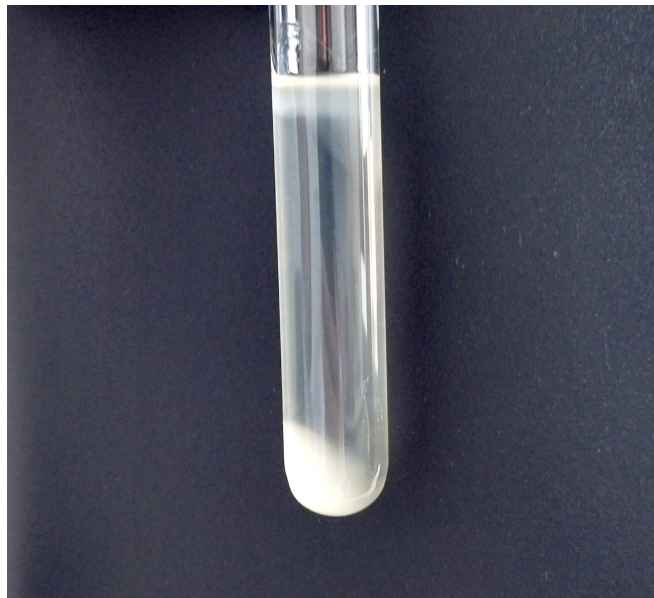


Figure S7. Mixture of 0.5% tragacanth gum and 2% gum arabic after centrifugation at 3500 rpm for 15 minutes.