

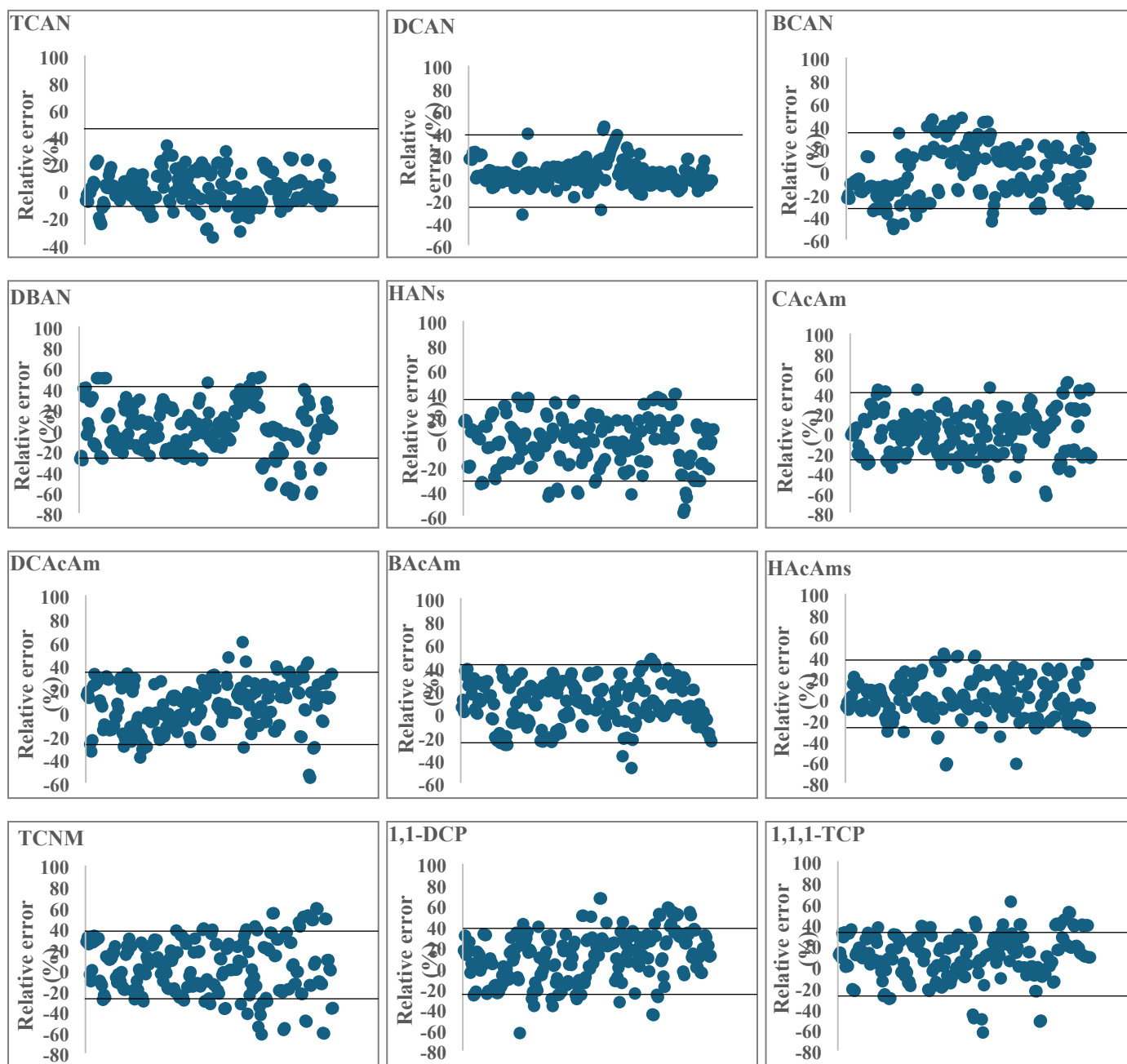
Supplementary Material

Predictive models for the formation of emerging disinfection by products.

Kozari Argyri¹, Voutsas Dimitra¹

1: Environmental Pollution Control Laboratory, School of Chemistry, Aristotle University, 541 24 Thessaloniki, Greece

Corresponding authors: akozaria@chem.auth.gr (A. Kozari), dvoutsas@chem.auth.gr (D. Voutsas)



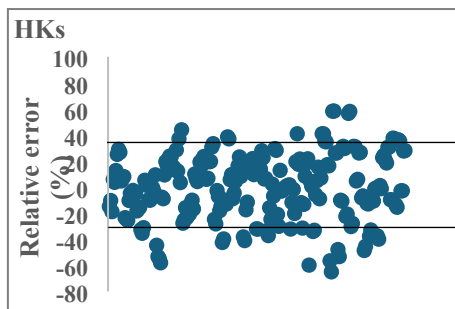
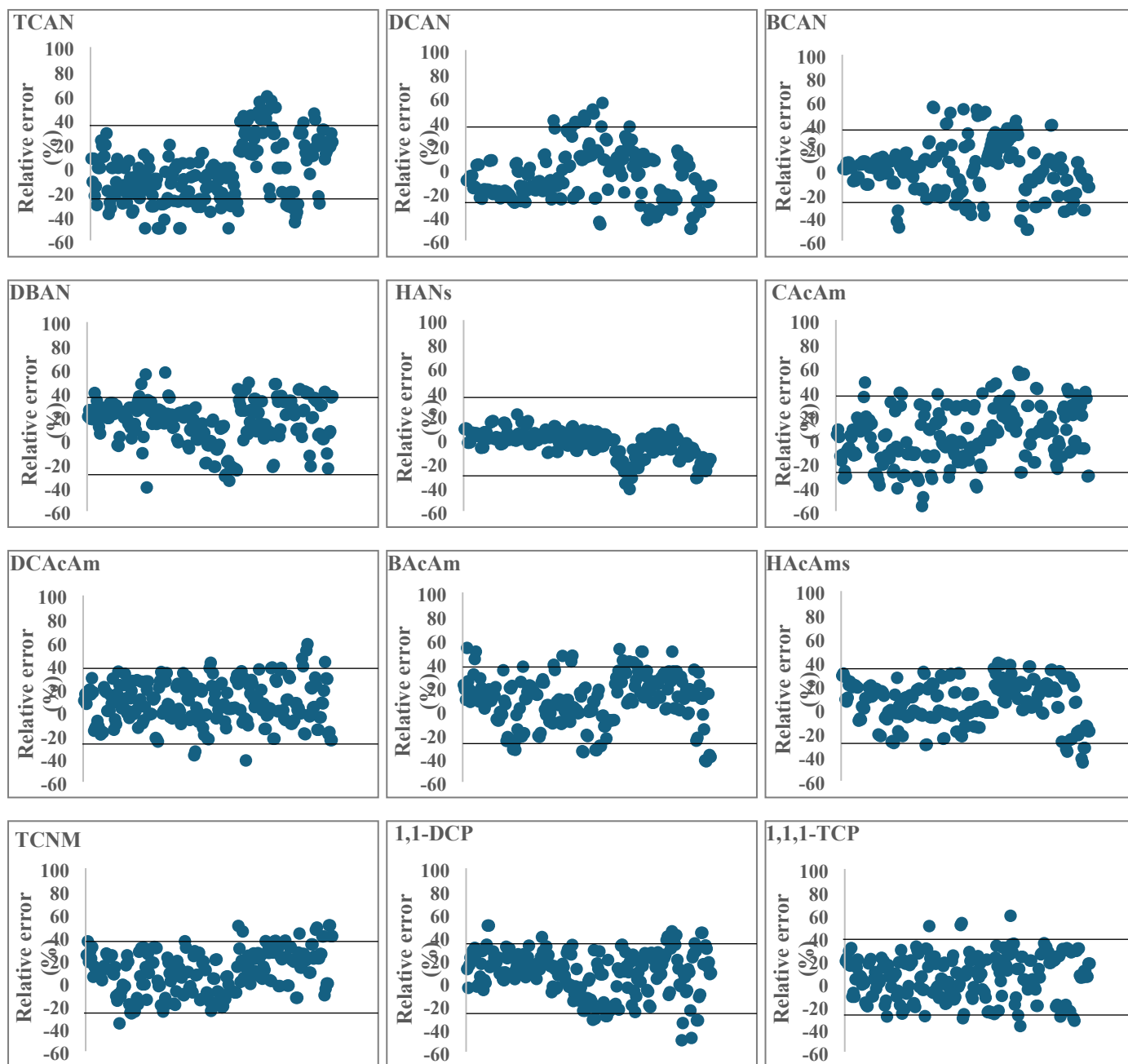


Fig. S1: Relative errors between measured and predicted from linear model concentrations of eDBPs. Solid lines refer to 30% accepted error.



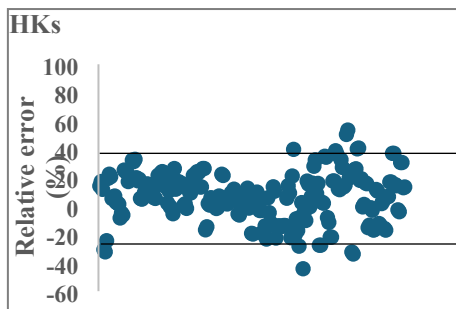


Fig. S2: Relative errors between measured and predicted from logarithmic linear model concentrations of eDBPs. Solid lines refer to 30% accepted error.