

Supplementary Information

**Bioaccessibility and Antioxidant capacity of Epigallocatechin Gallate interacted
with mung bean protein: Impact of protein structure**

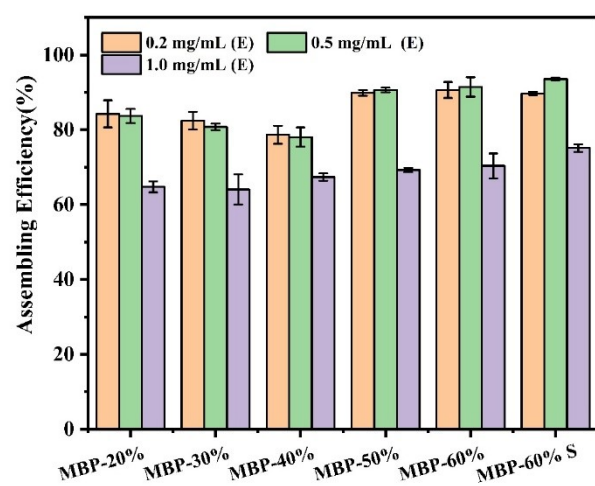


Fig. S1 The assembling efficiency of EGCG in MBP.

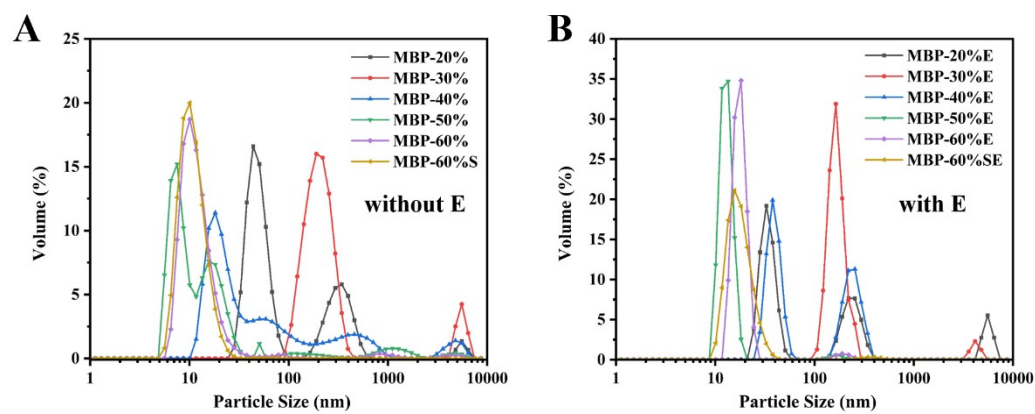


Fig. S2 The volume distribution diagrams of MBP (A) and MBP-EGCG (B) complexes.

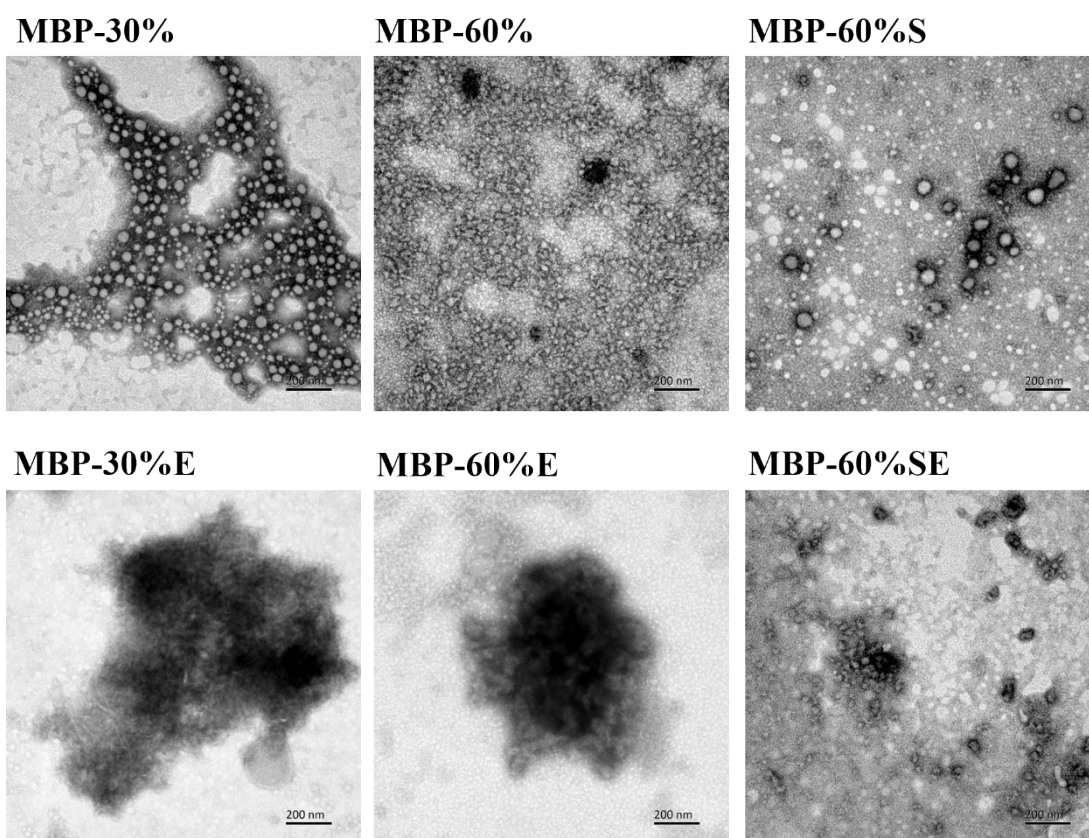


Fig. S3 TEM images of MBP and MBP-EGCG complexes