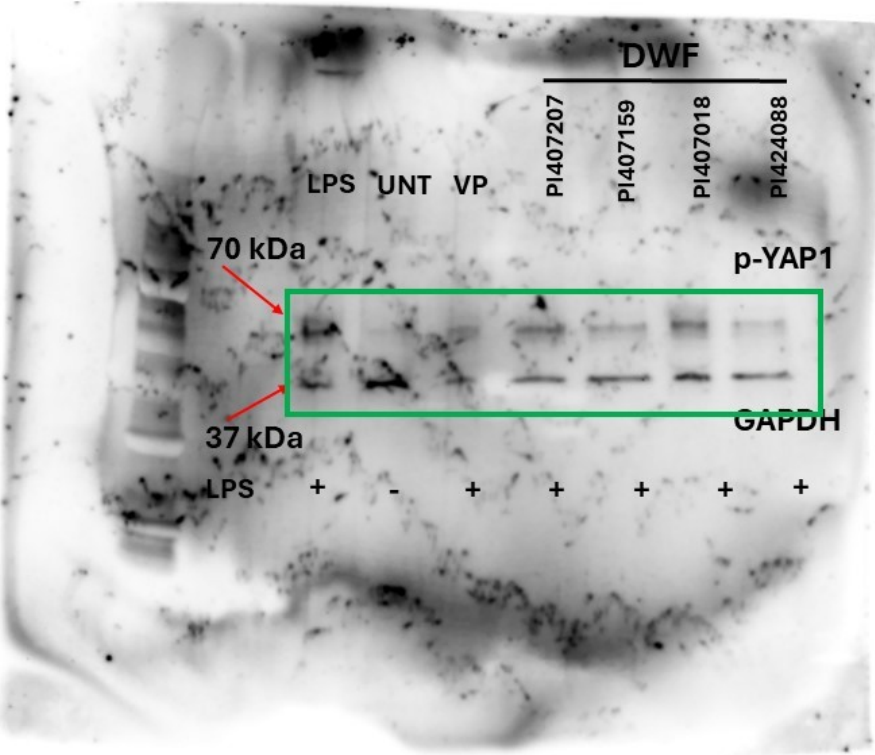
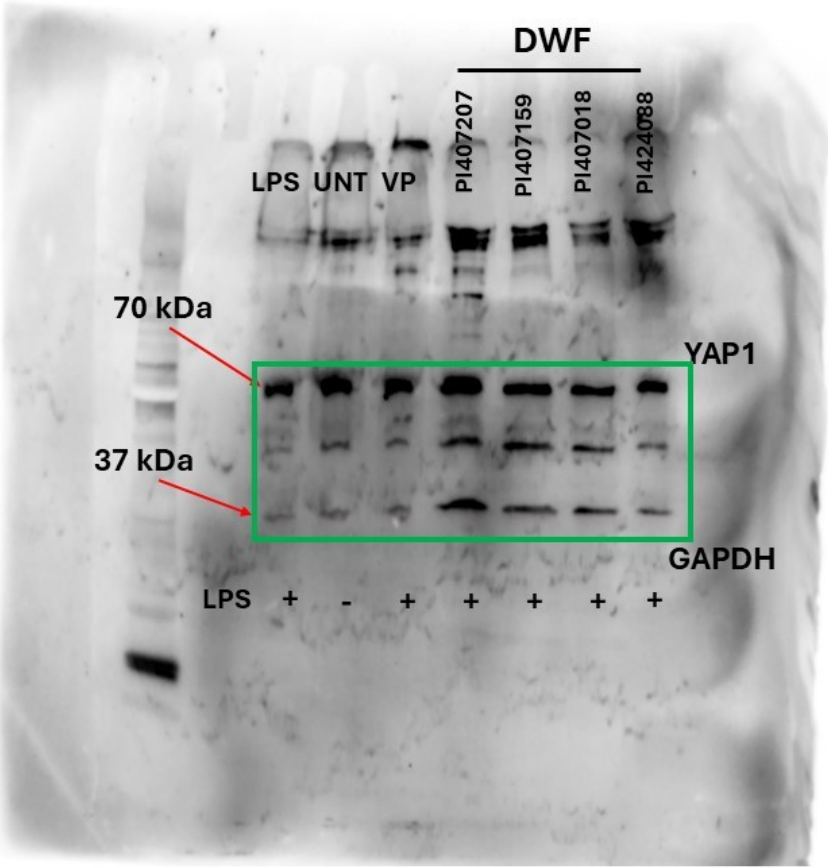


Figure 5A



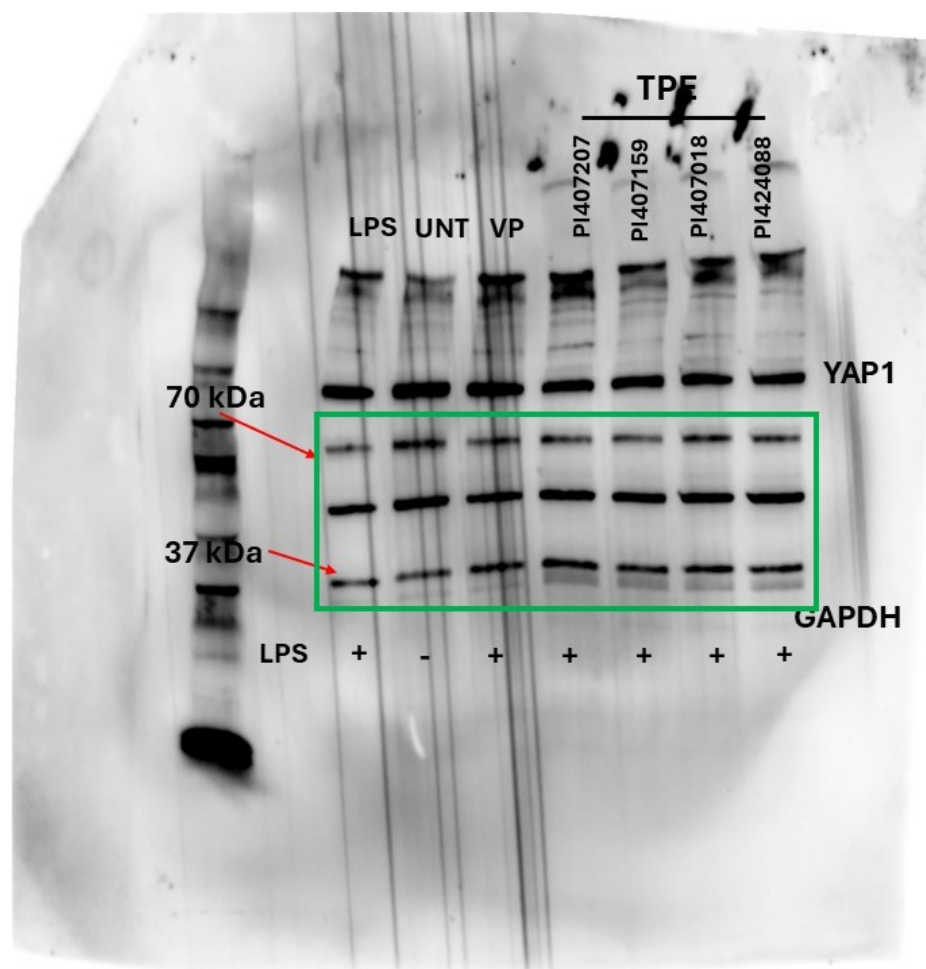


Figure 5B

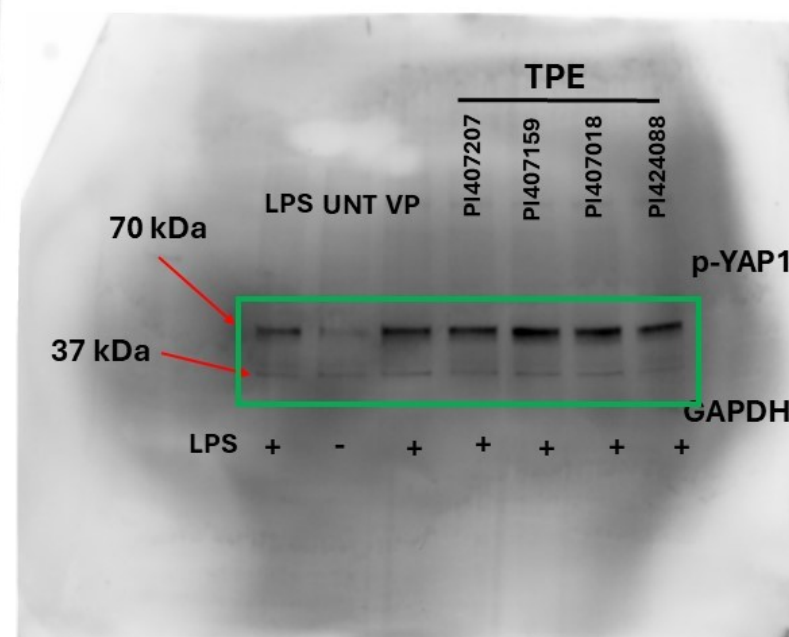
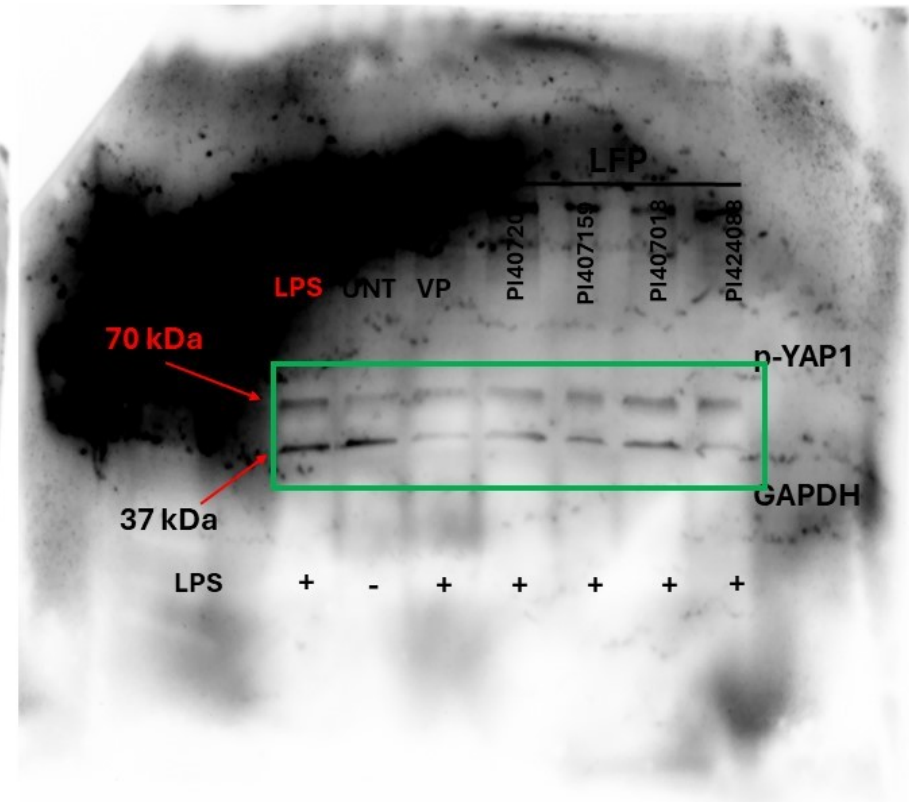
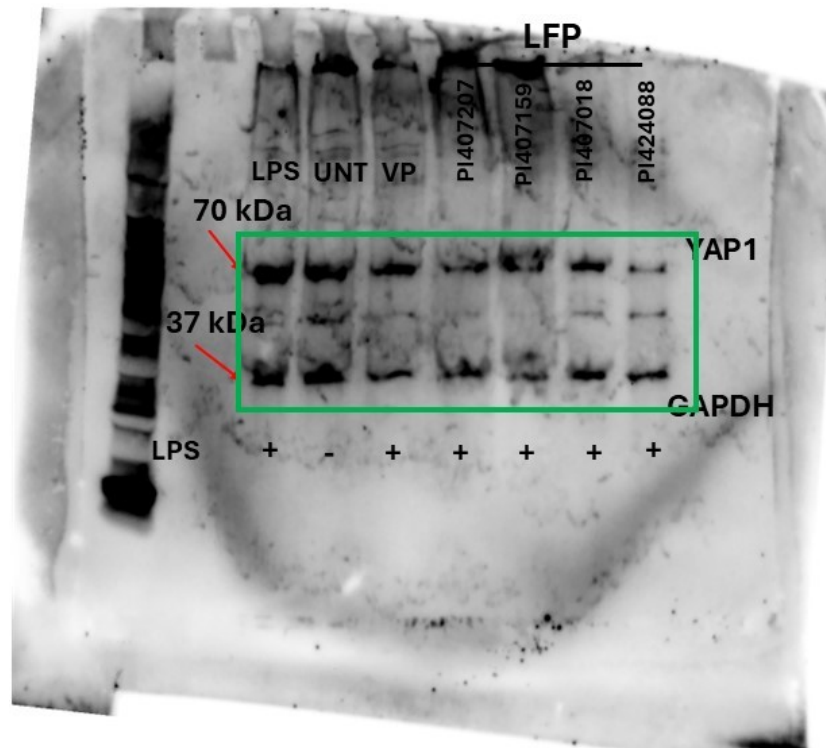


Figure 5C



Western blot analysis showing the effect of LPS and various PI3K inhibitors on YAP1 phosphorylation. The blot displays bands for p-YAP1 (70 kDa) and GAPDH (37 kDa). A green box highlights the p-YAP1 bands. Red arrows indicate the 70 kDa and 37 kDa markers. The lanes are labeled LPS, UNT, VP, and ELPE (PI407207, PI407159, PI407018, PI424088). LPS is present in all lanes except the first (UNT).

Lane	LPS	UNT	VP	ELPE
1	-	+	-	PI407207
2	+	-	-	PI407159
3	+	-	-	PI407018
4	+	-	-	PI424088

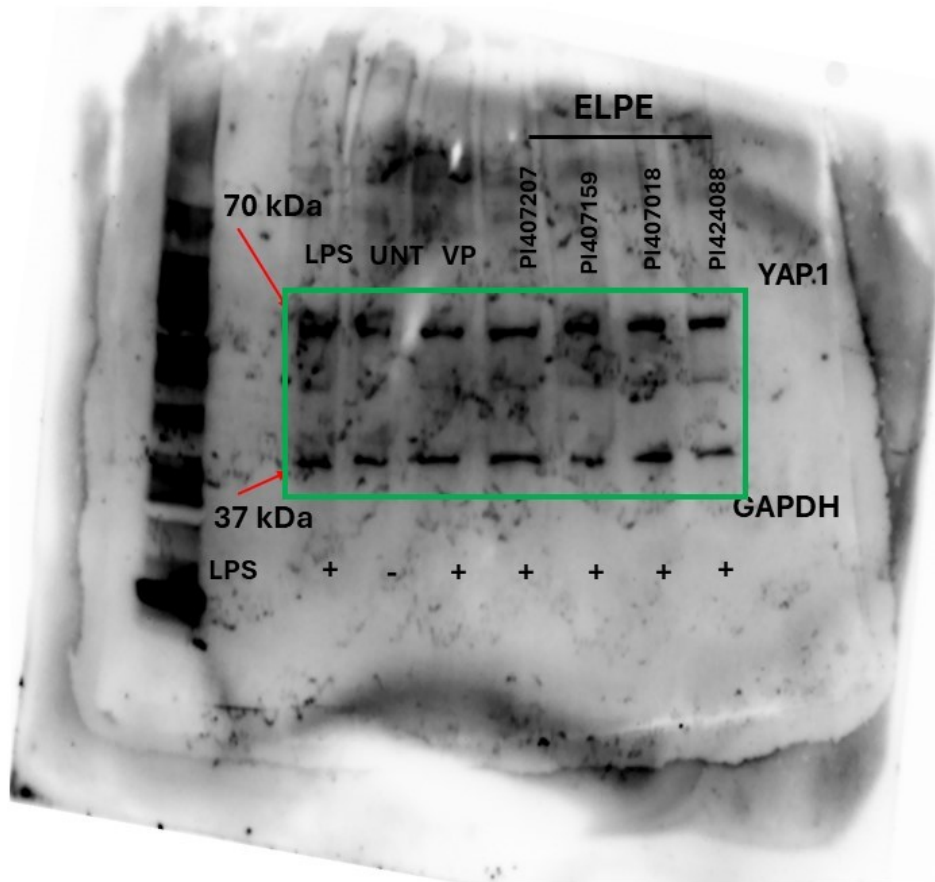


Figure 5E

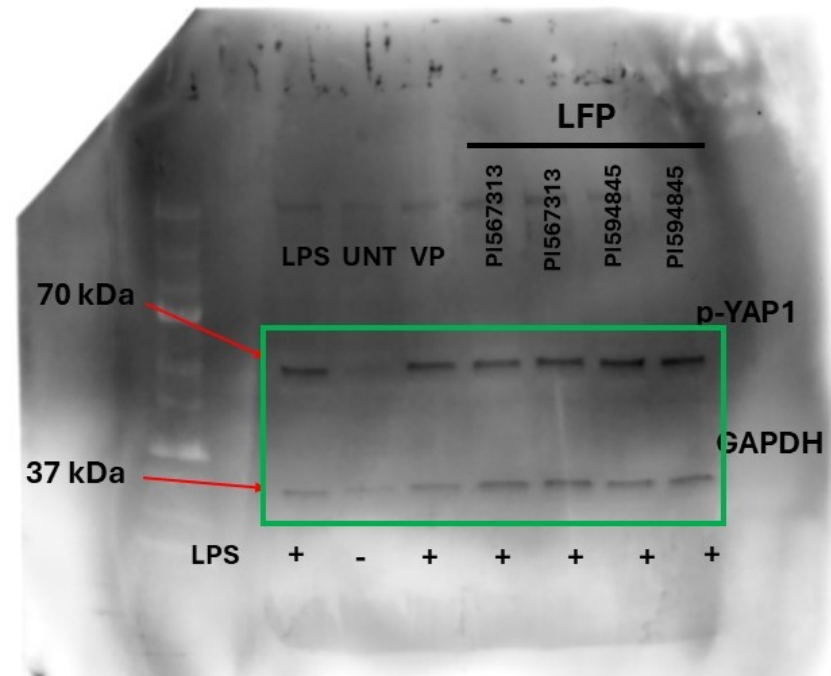
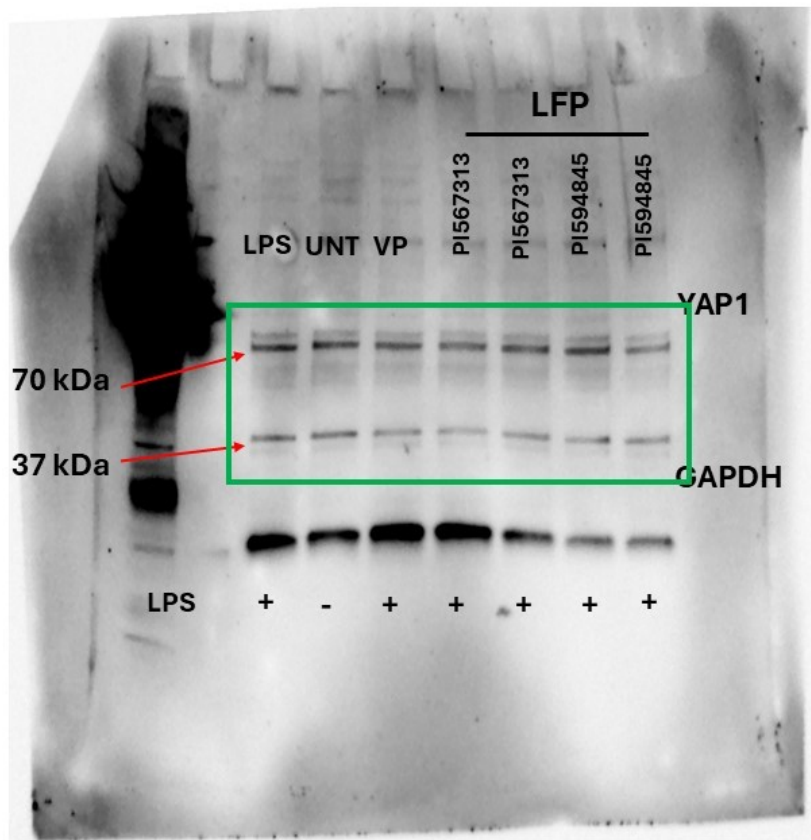


Figure 5F

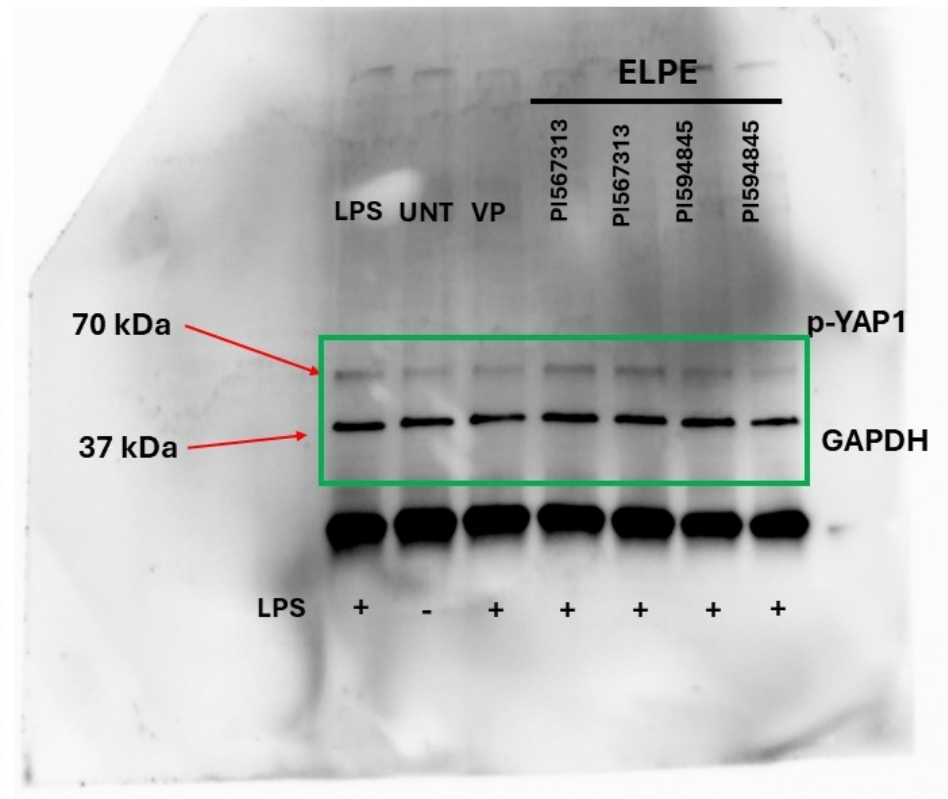
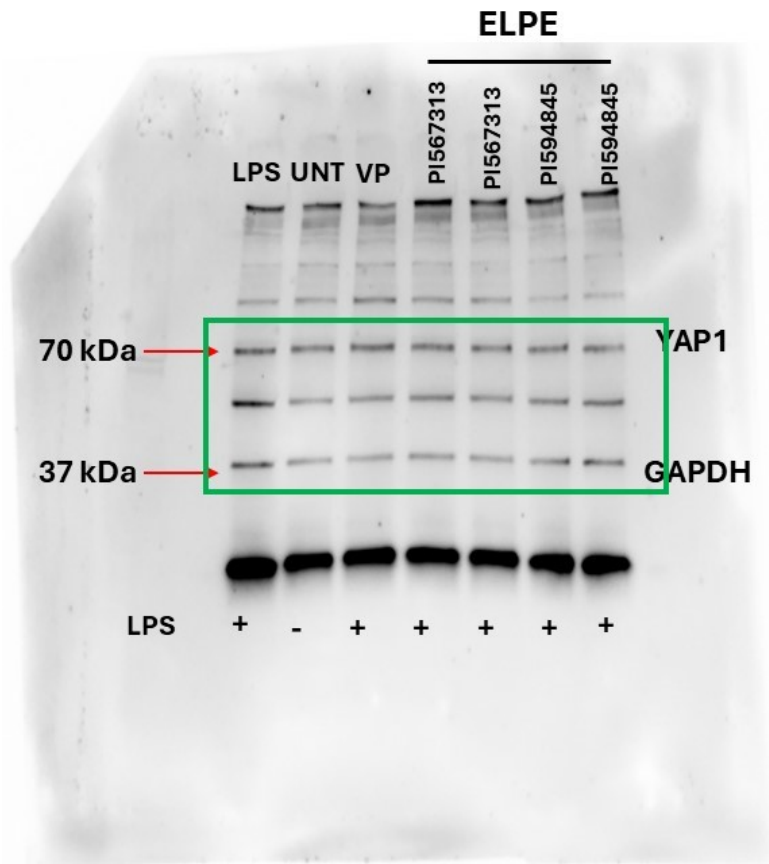


Figure 6A

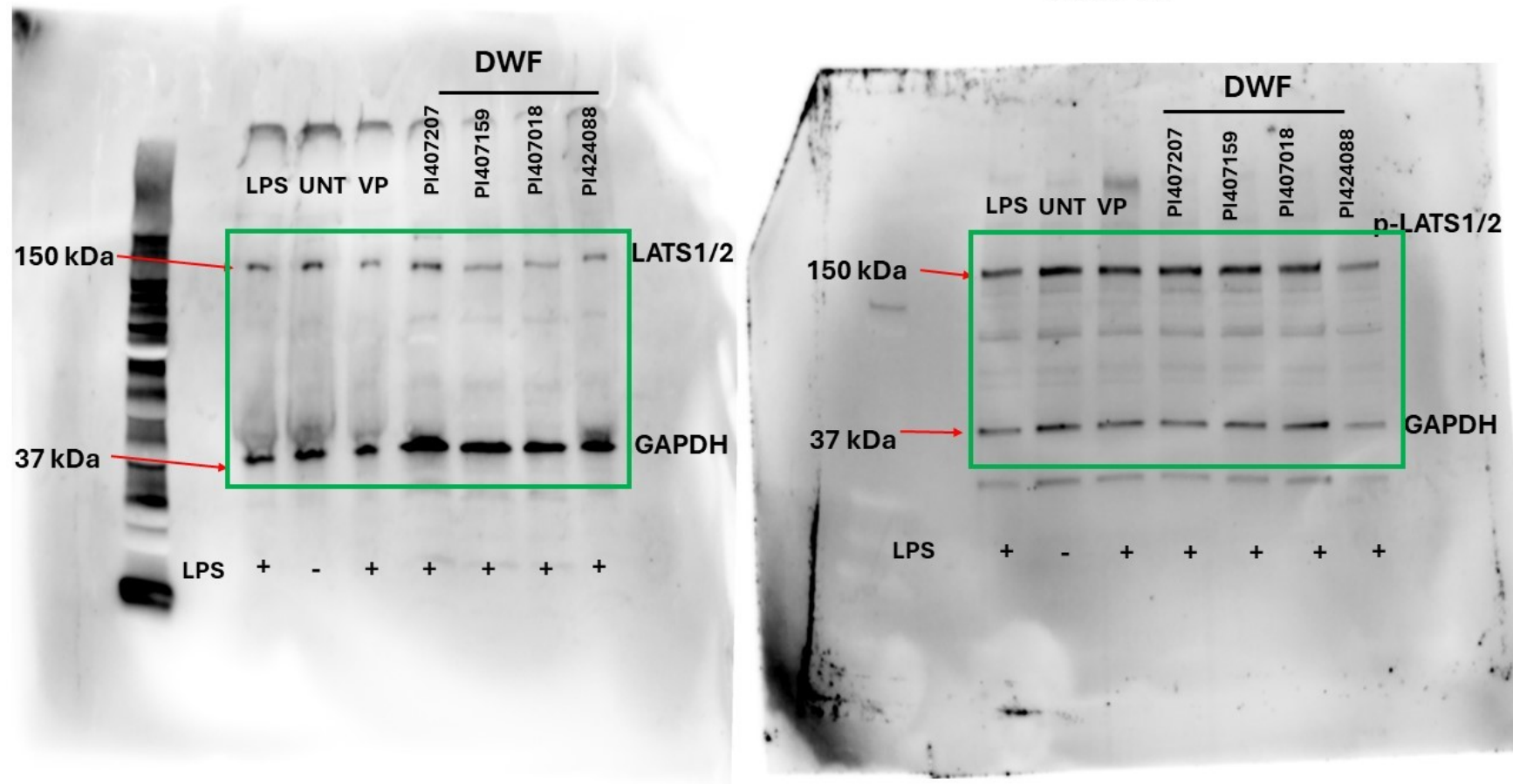


Figure 6B

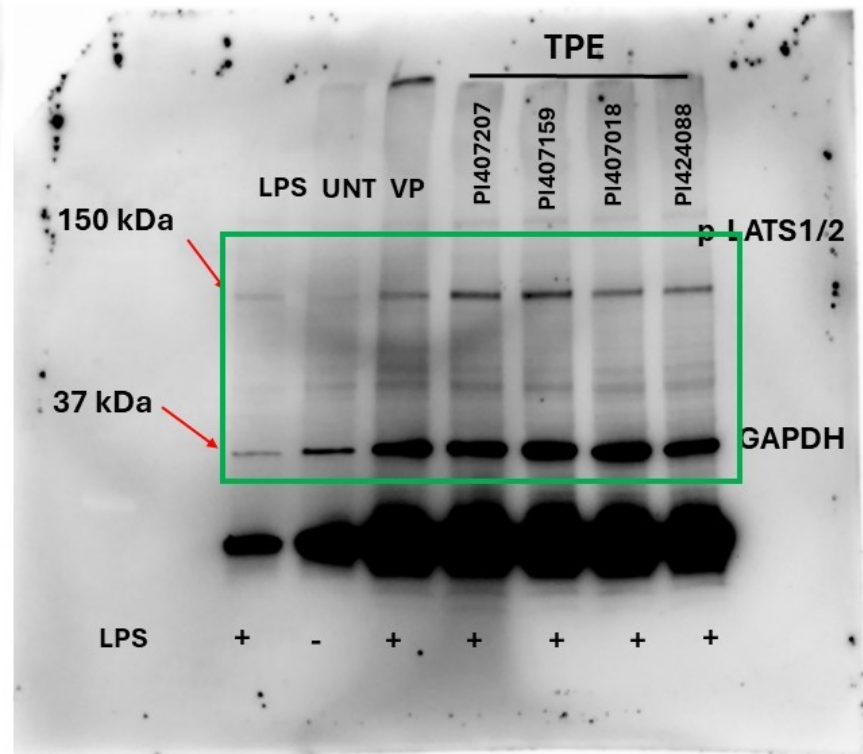
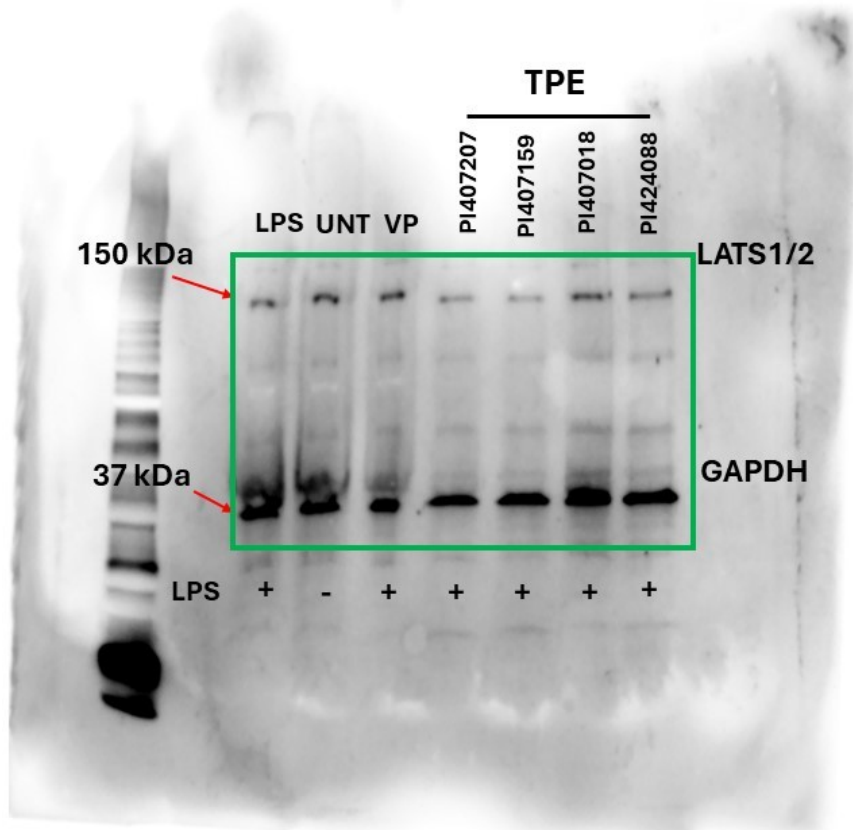


Figure 6C

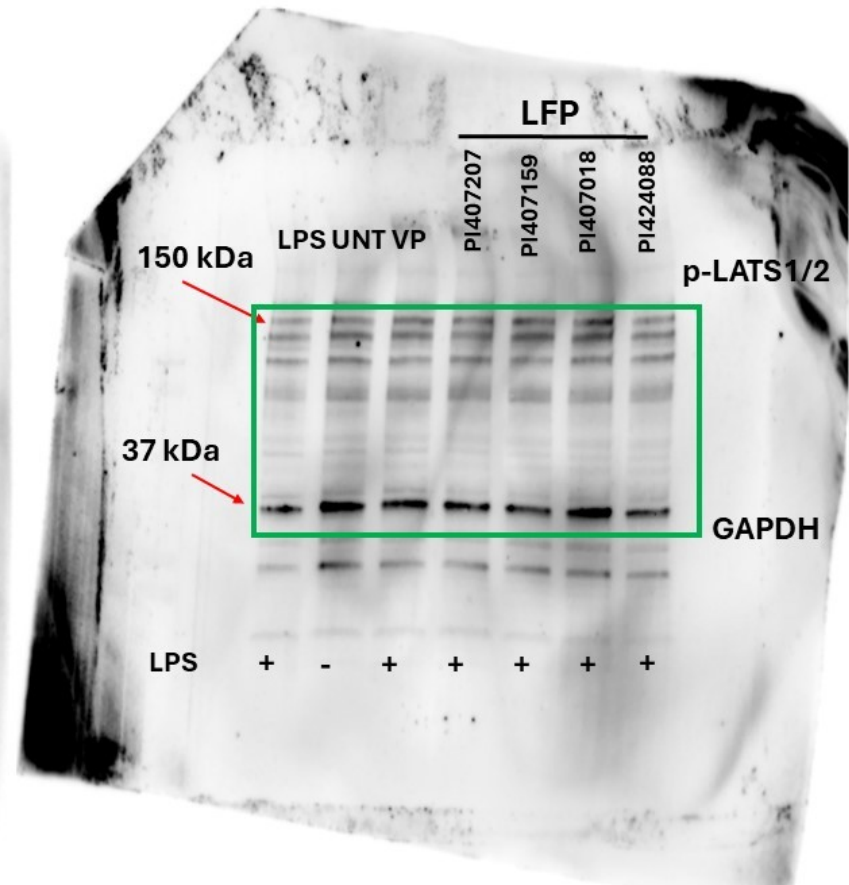
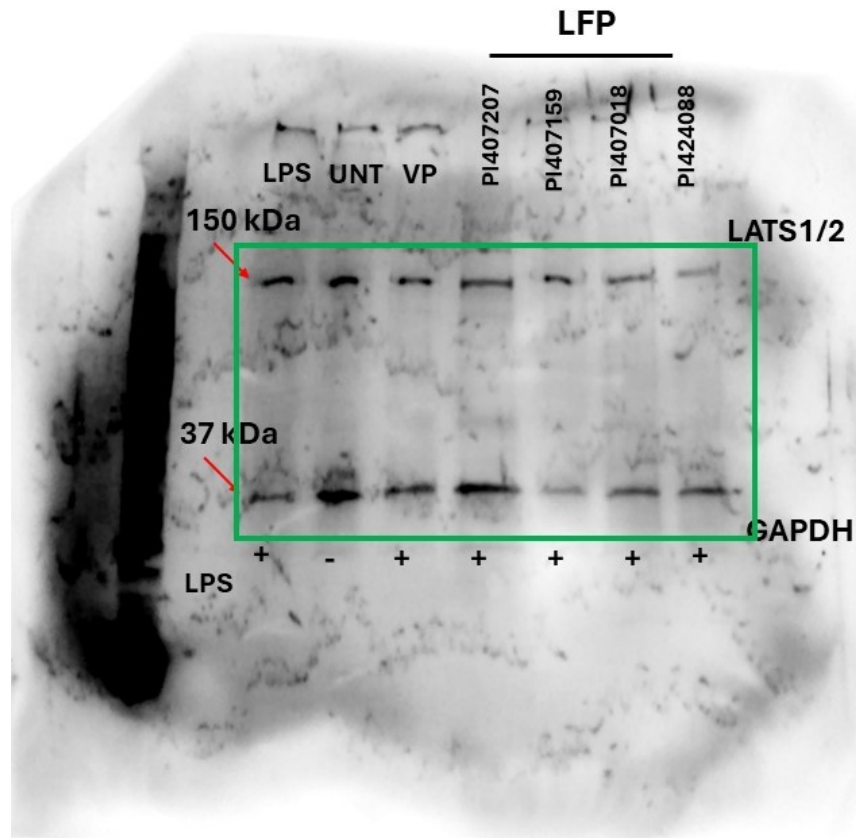


Figure 6D

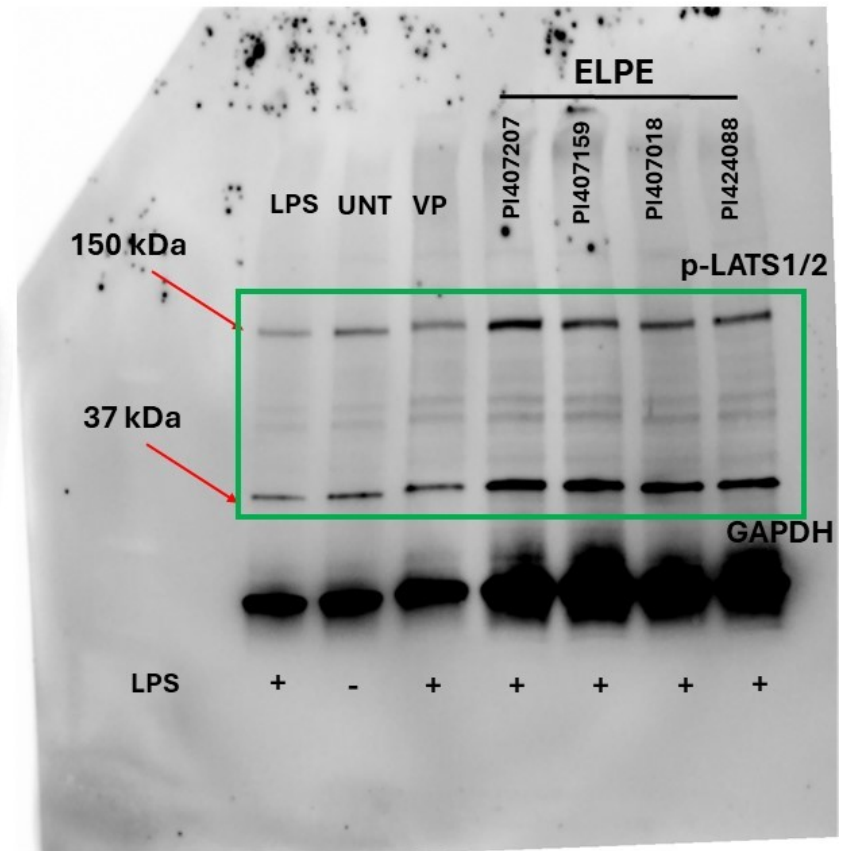
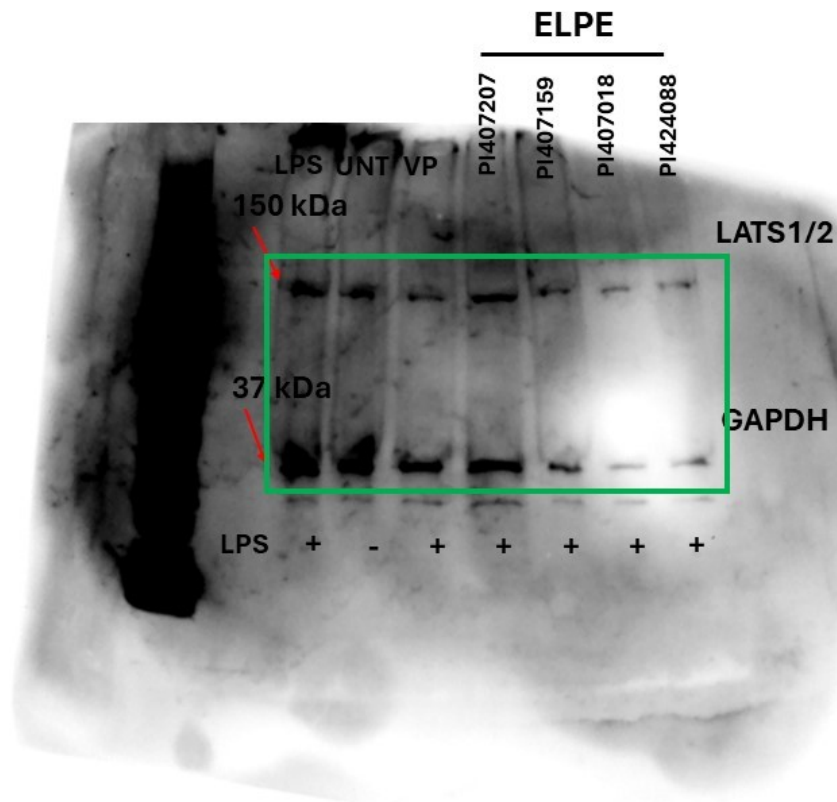


Figure 6E

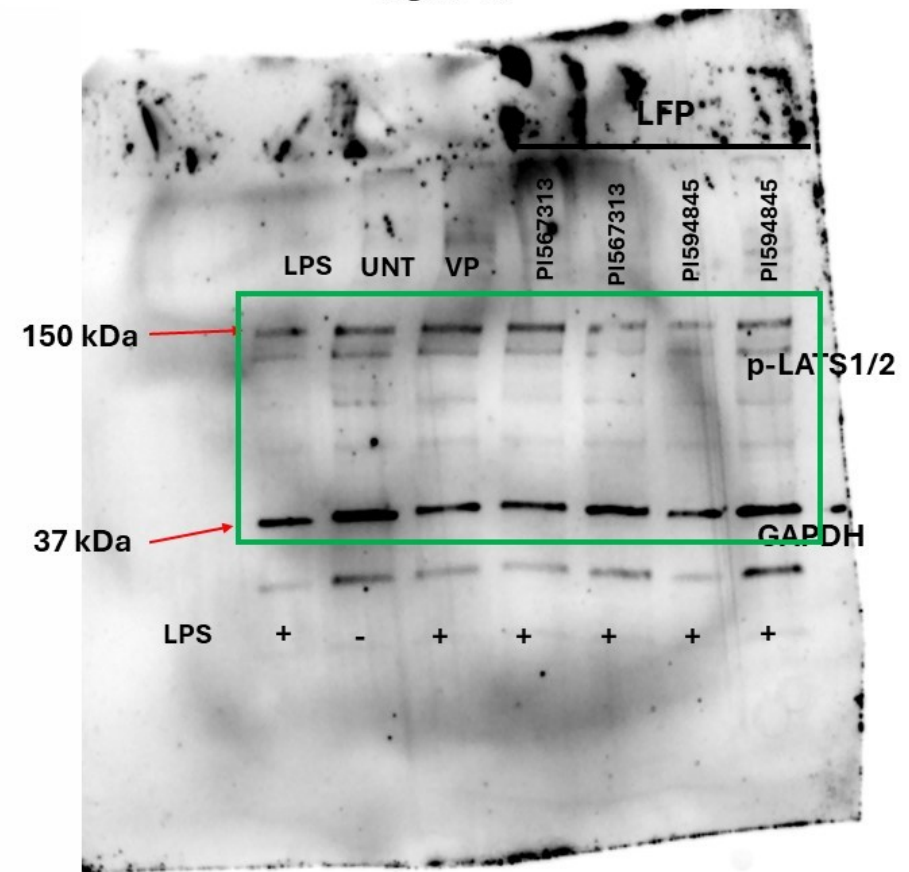
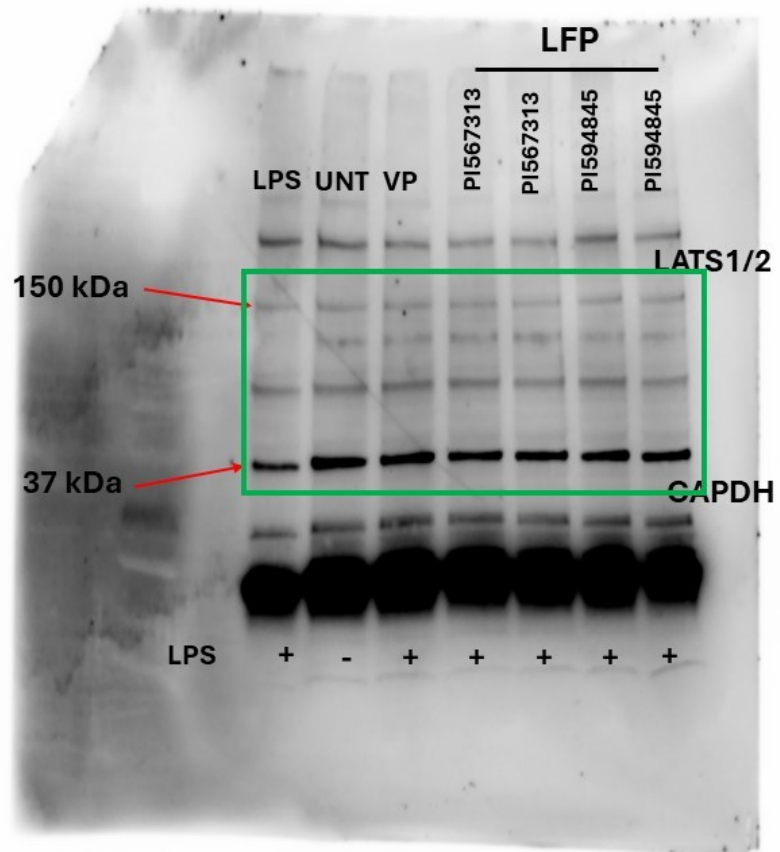


Figure 6F

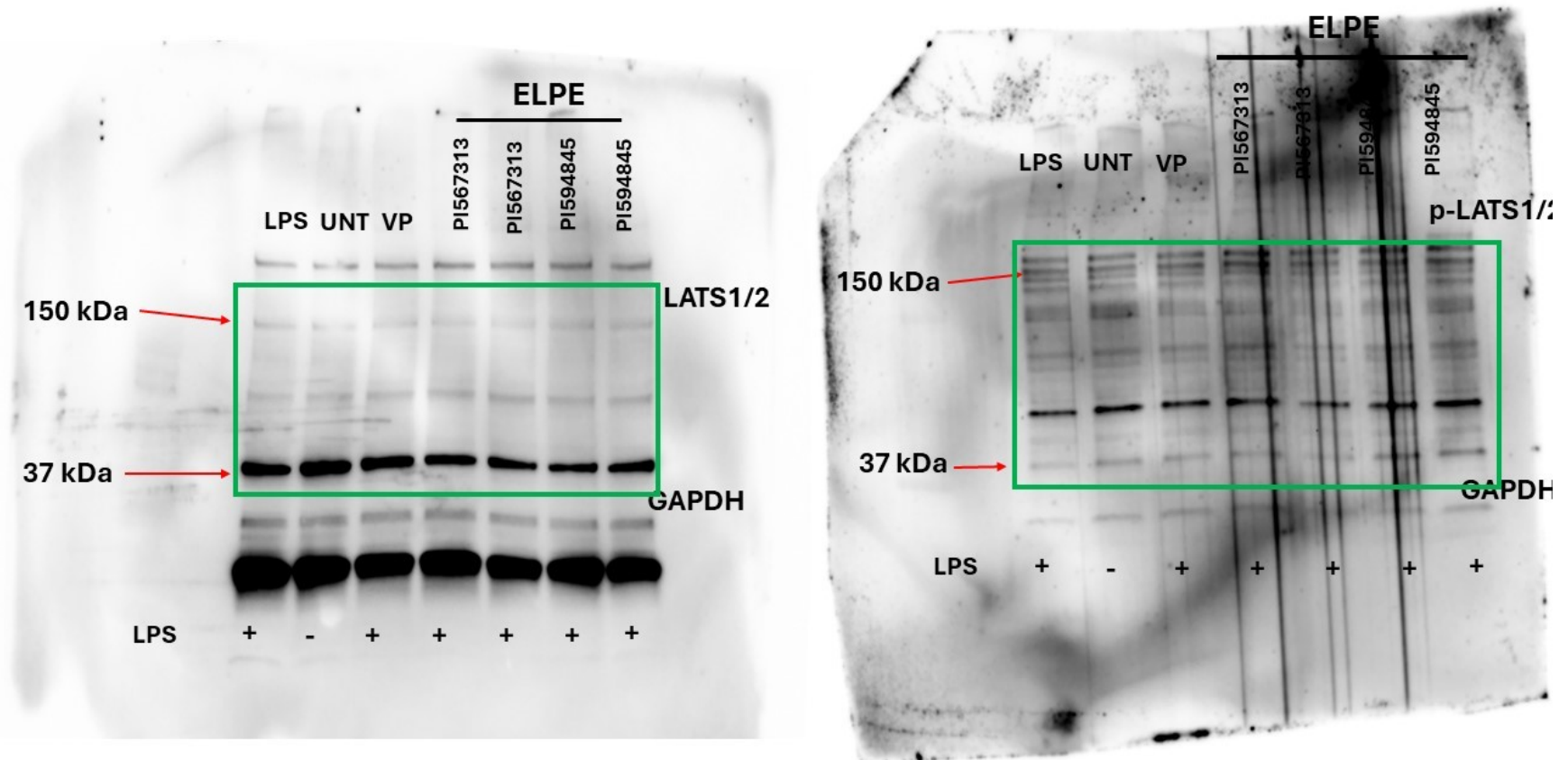


Figure 7A

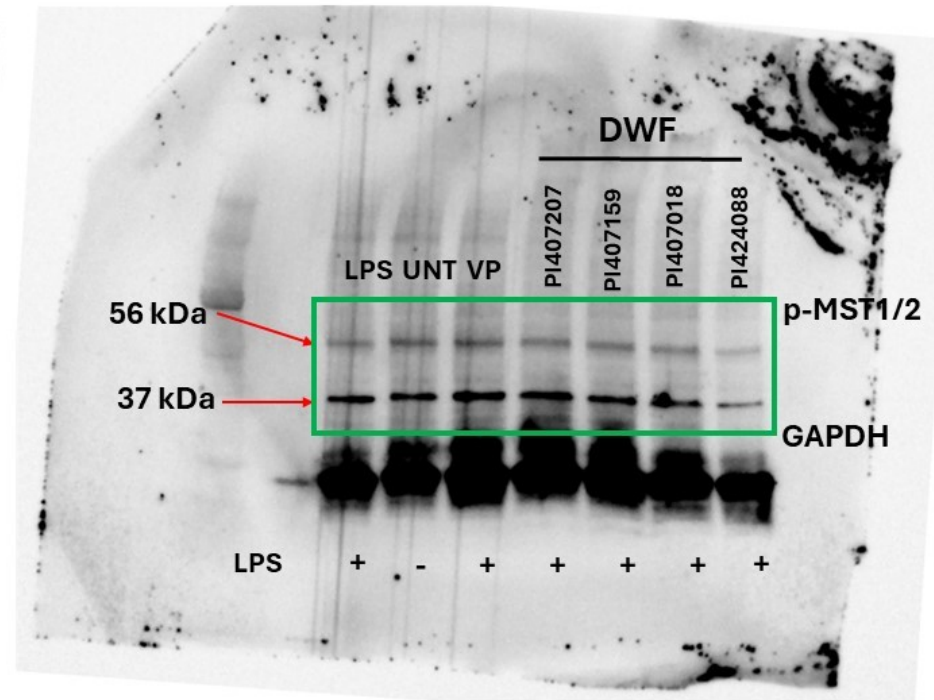
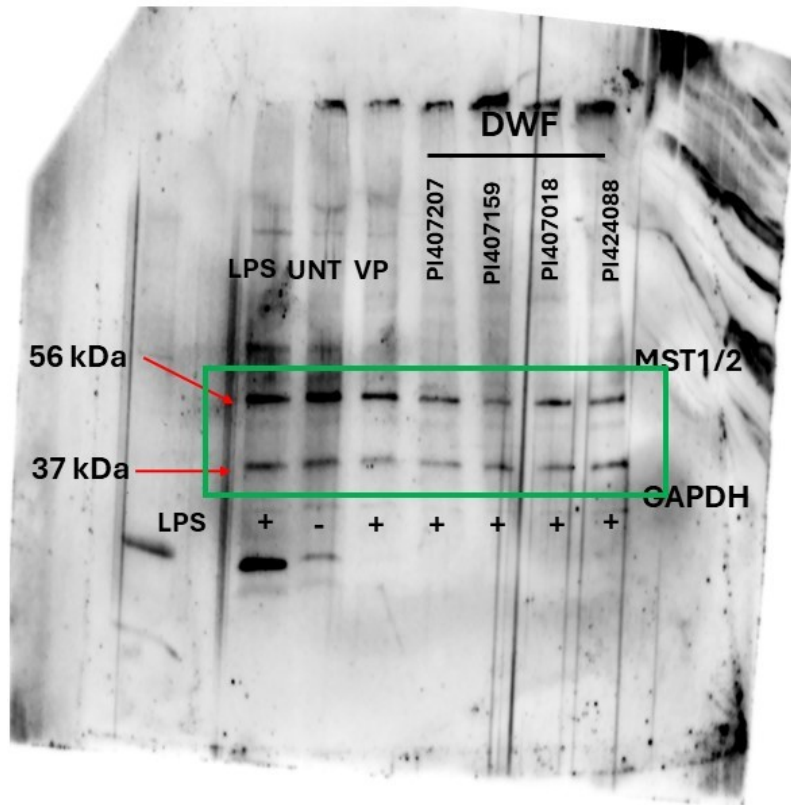


Figure 7B

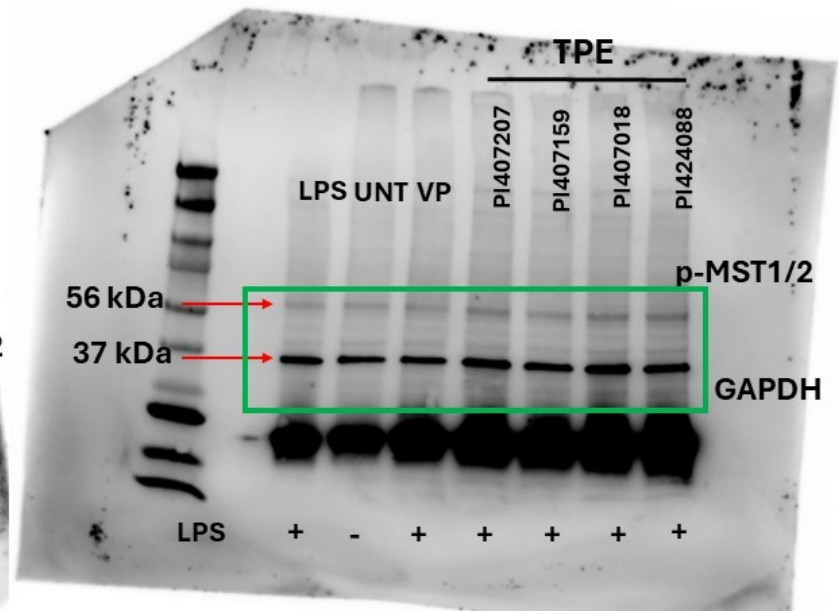
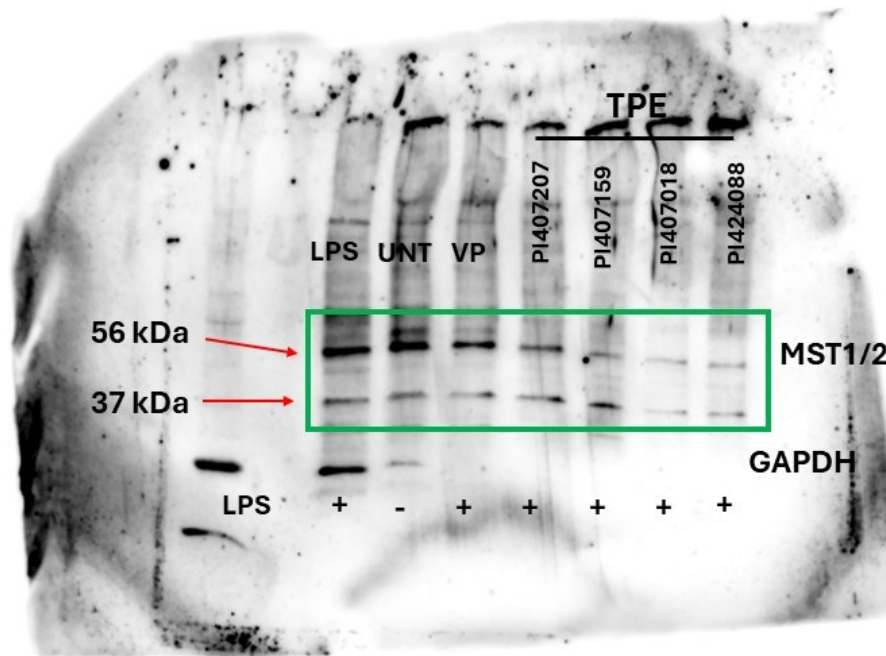
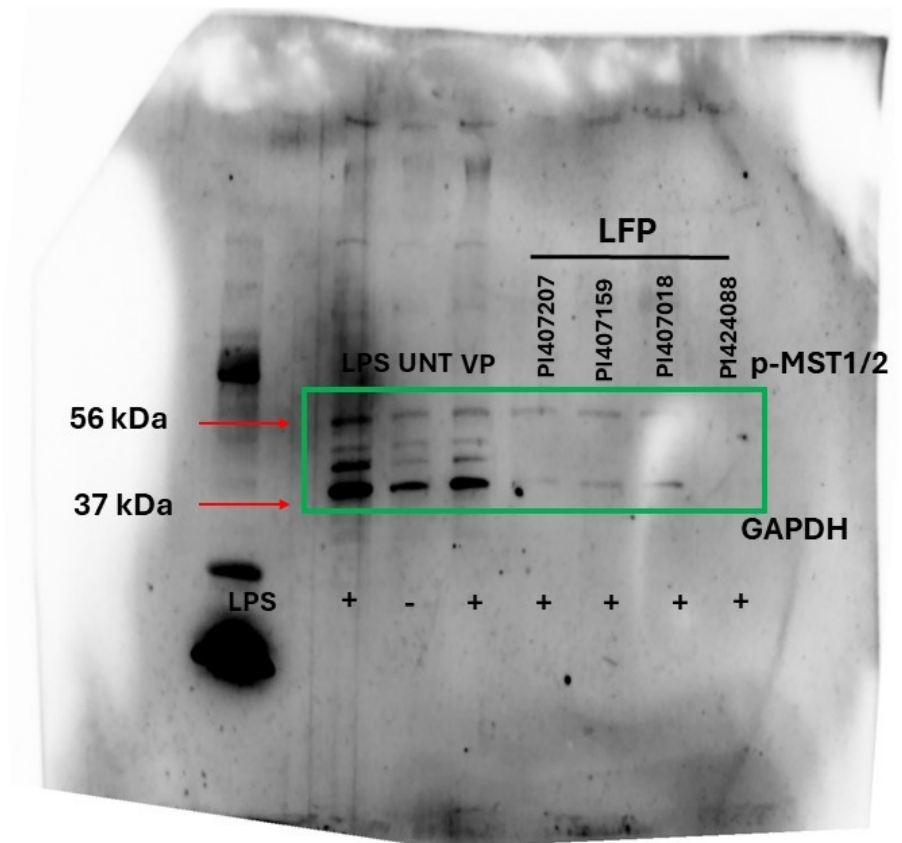
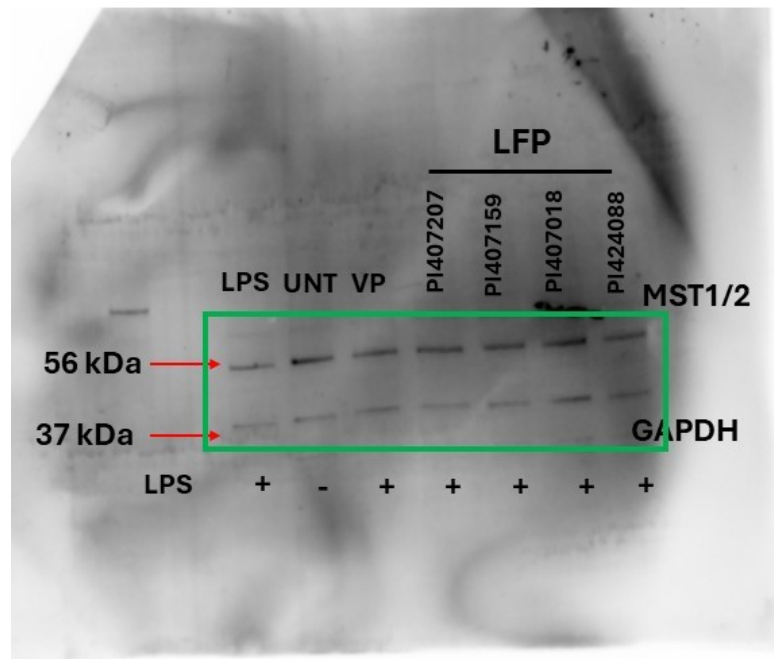


Figure 7C



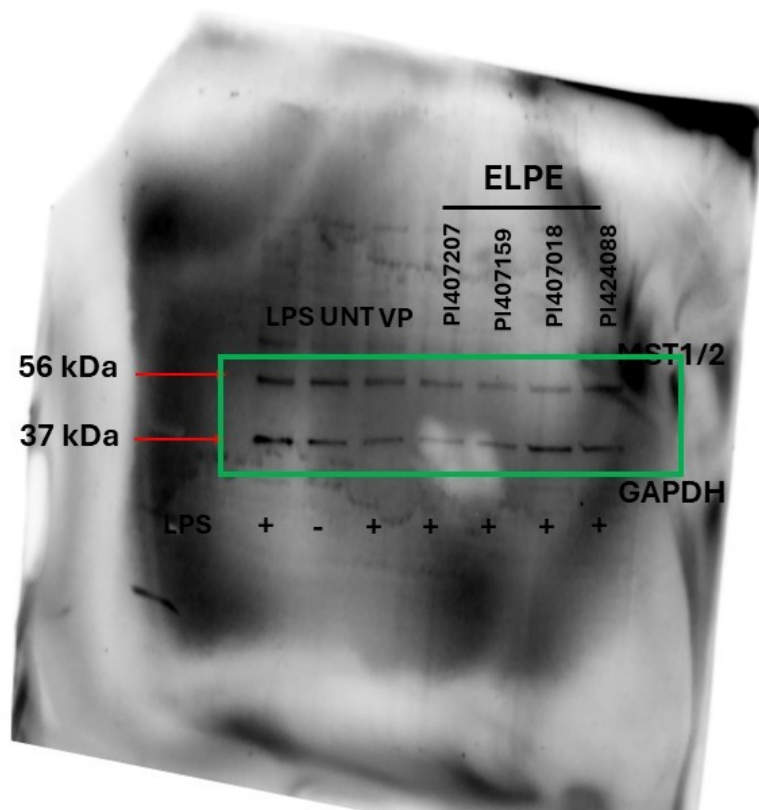
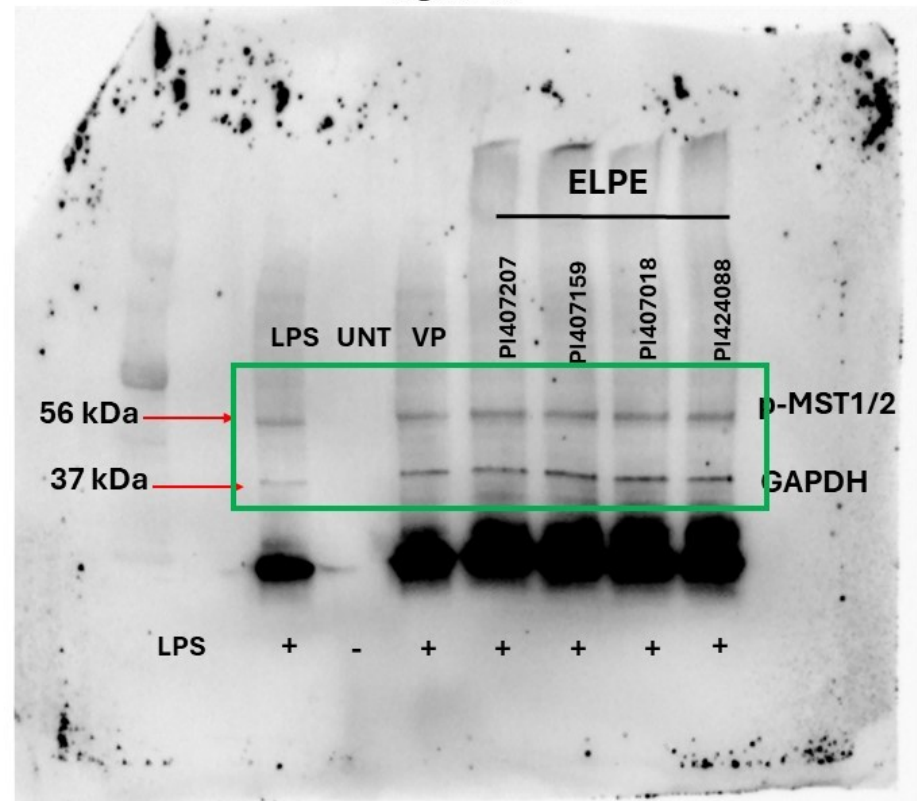


Figure 7D



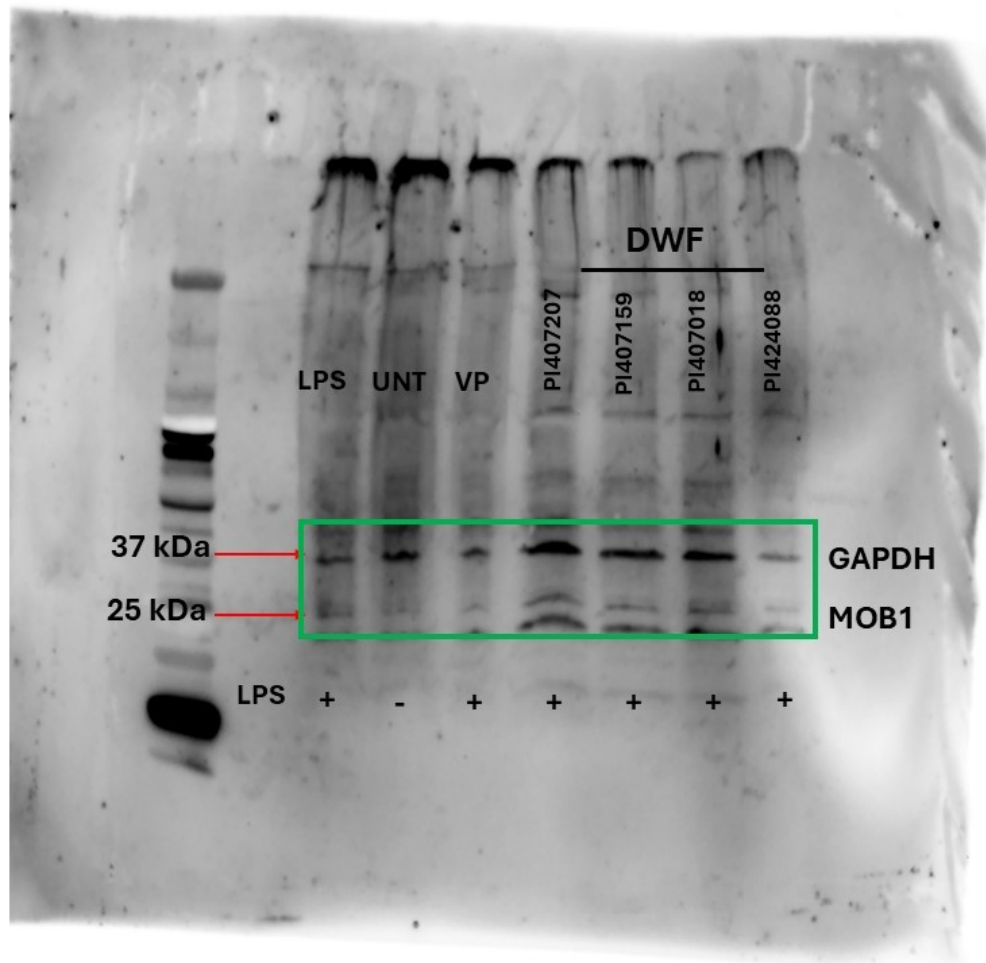


Figure 8A

Figure 8B

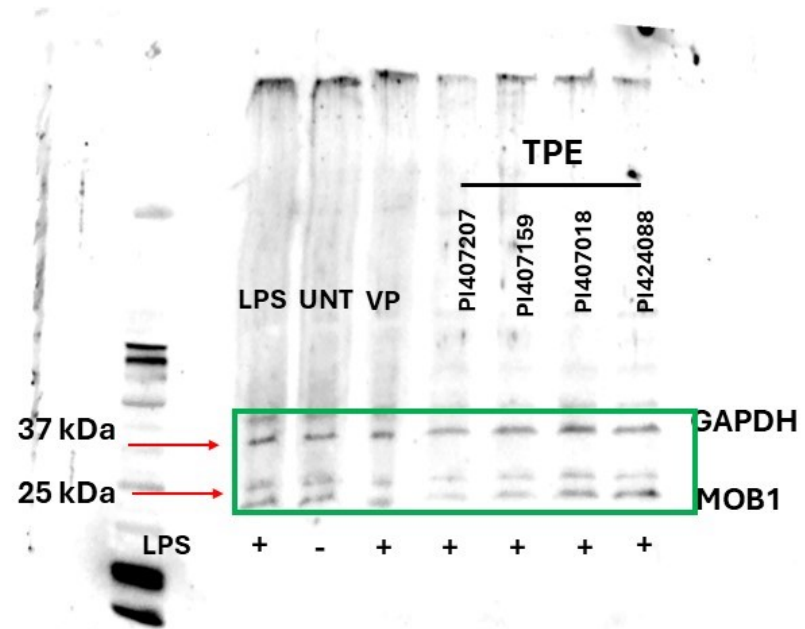


Figure 8C

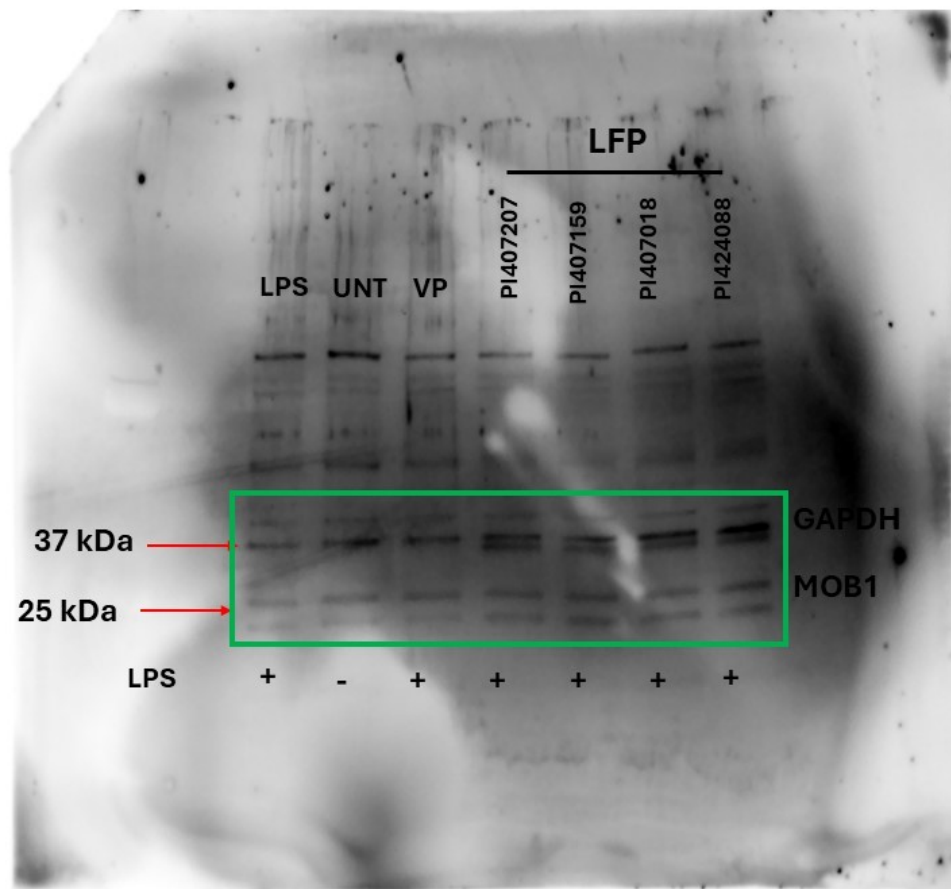
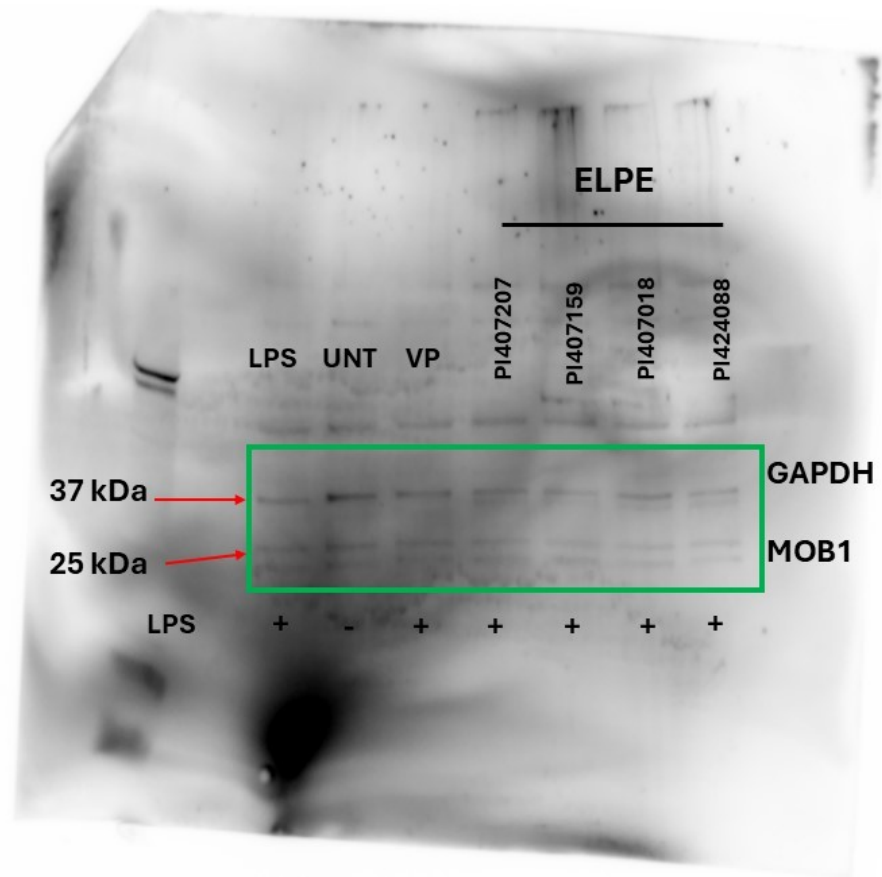


Figure 8D



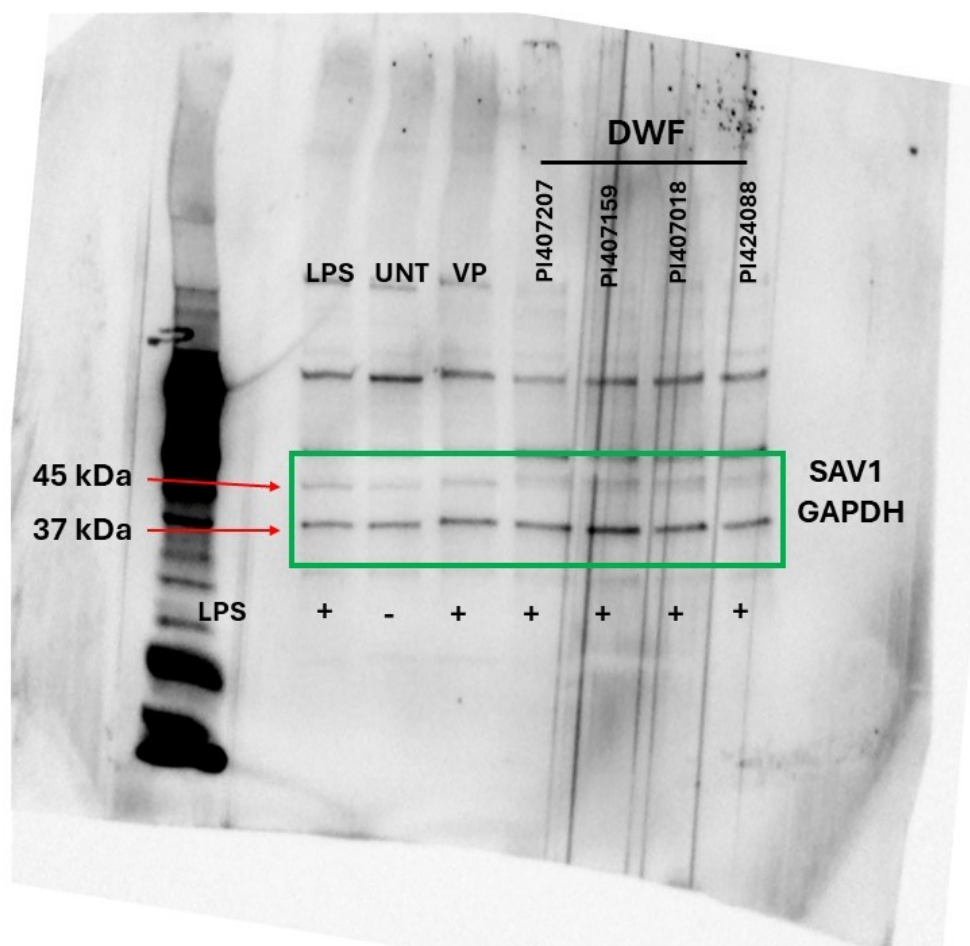


Figure 9A

Figure 9B

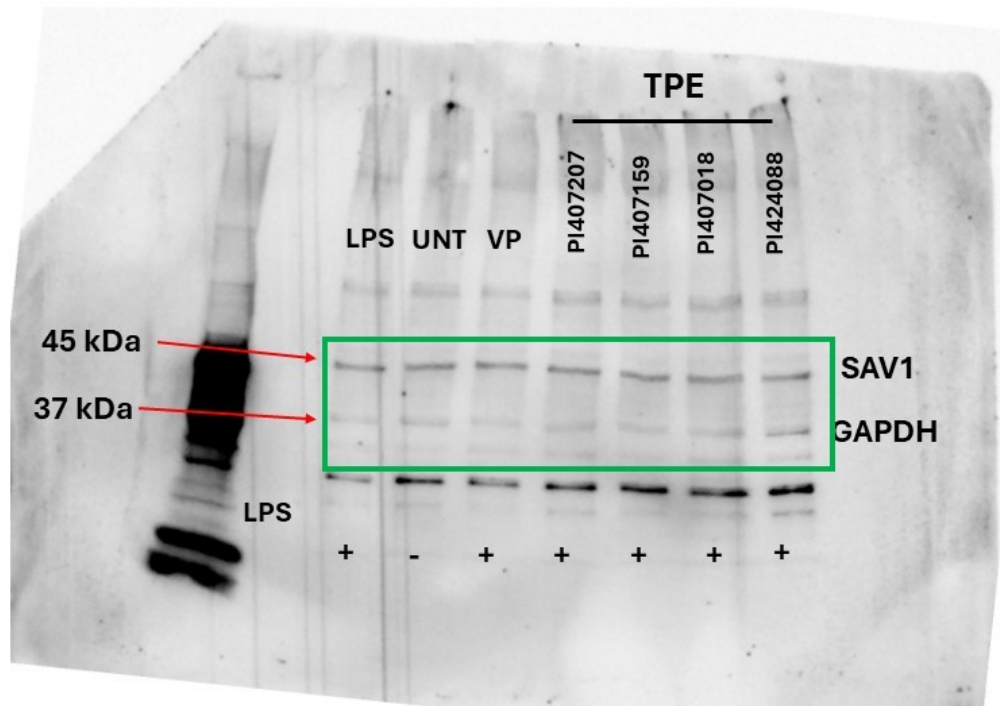


Figure 9C

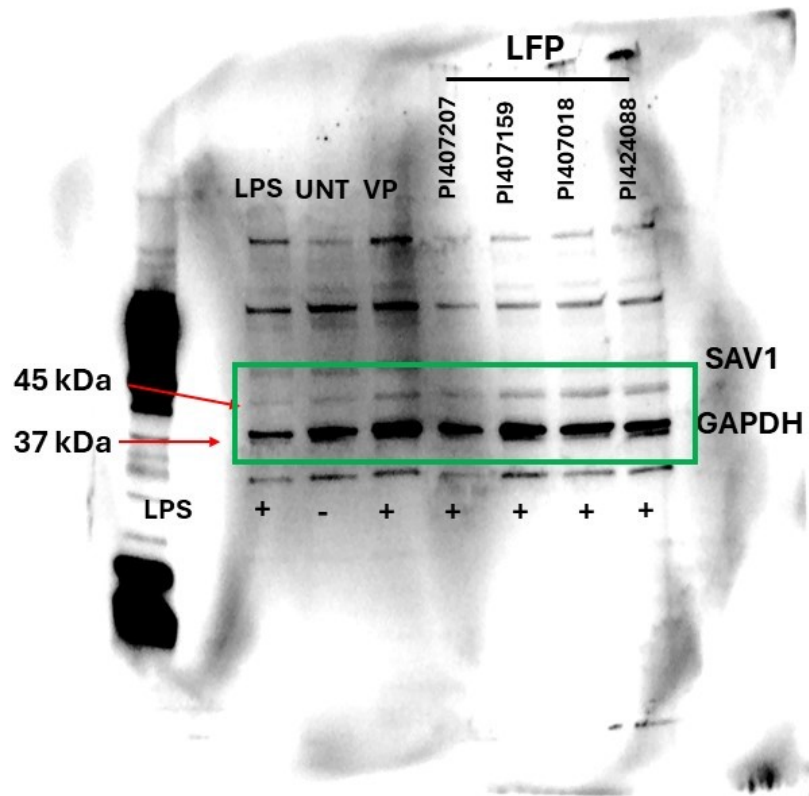
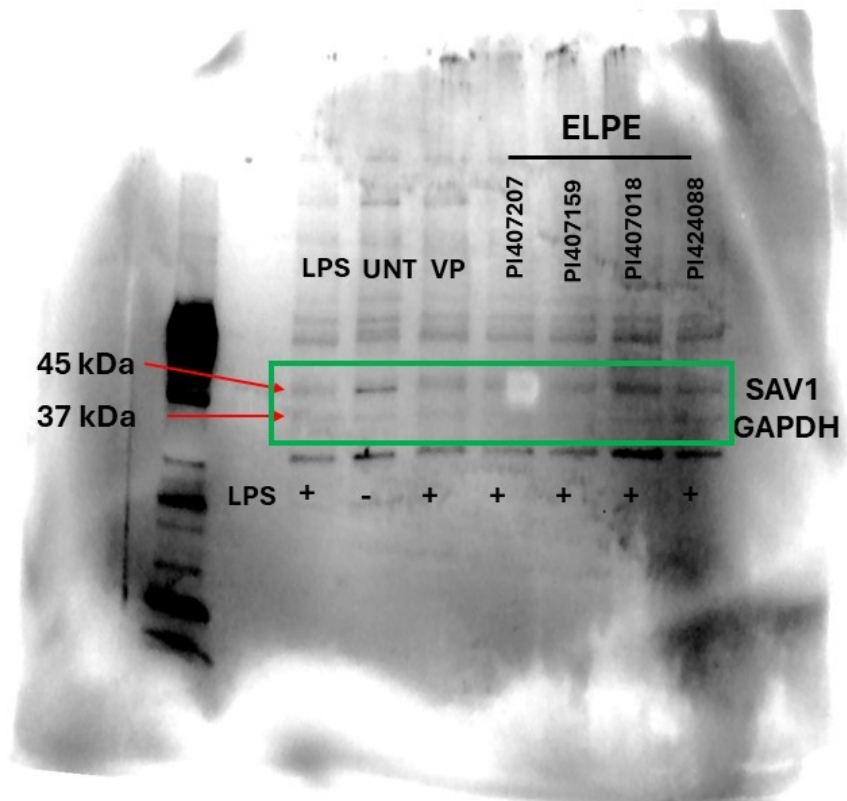
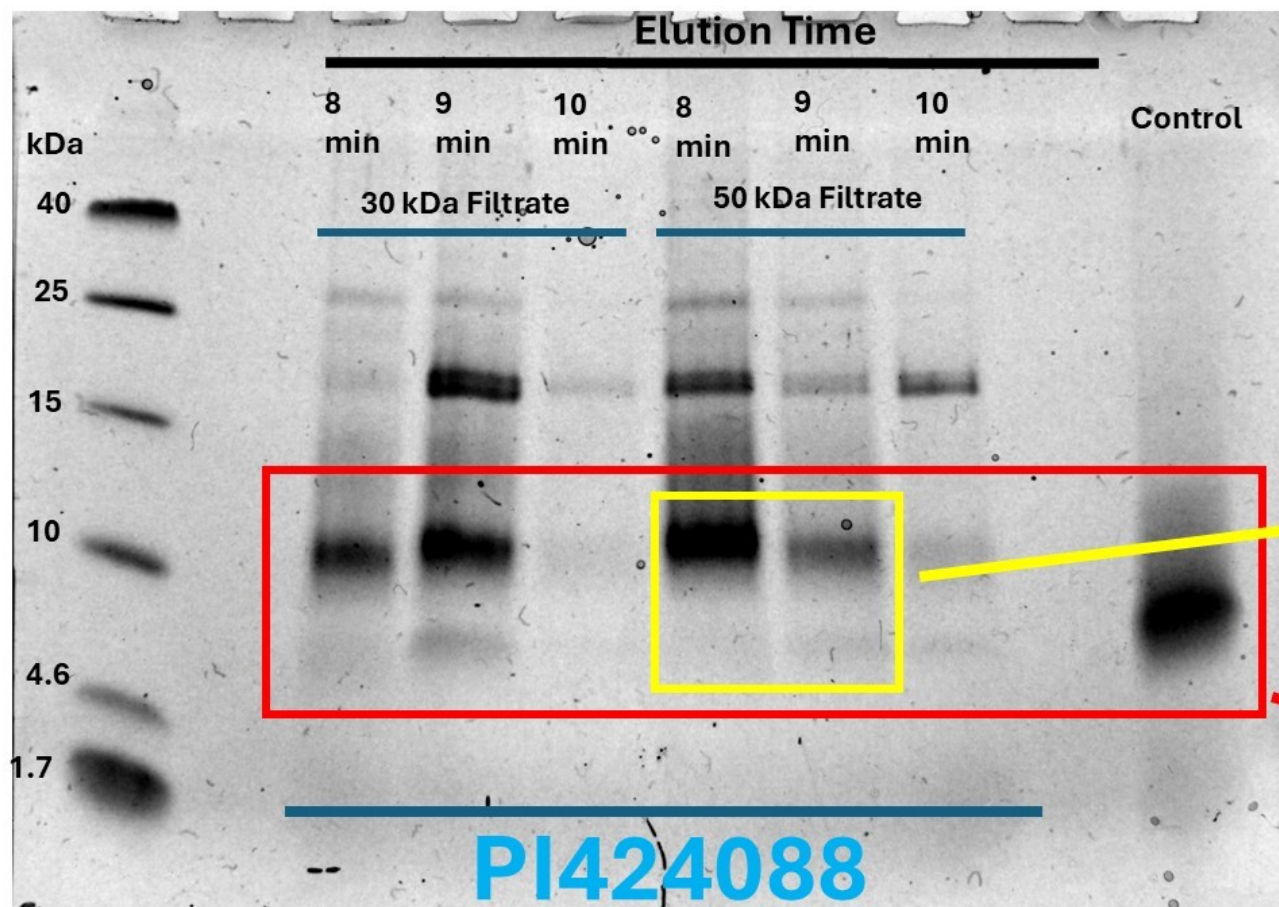


Figure 9D





Supplementary
figure 1

Bands at 5 and 10 kDa
from fraction 9 and 10
of 50 kDa filtrate were
cut and sent to
Proteomics Center

Possible lunasin
bands at 10 and 15
kDa

