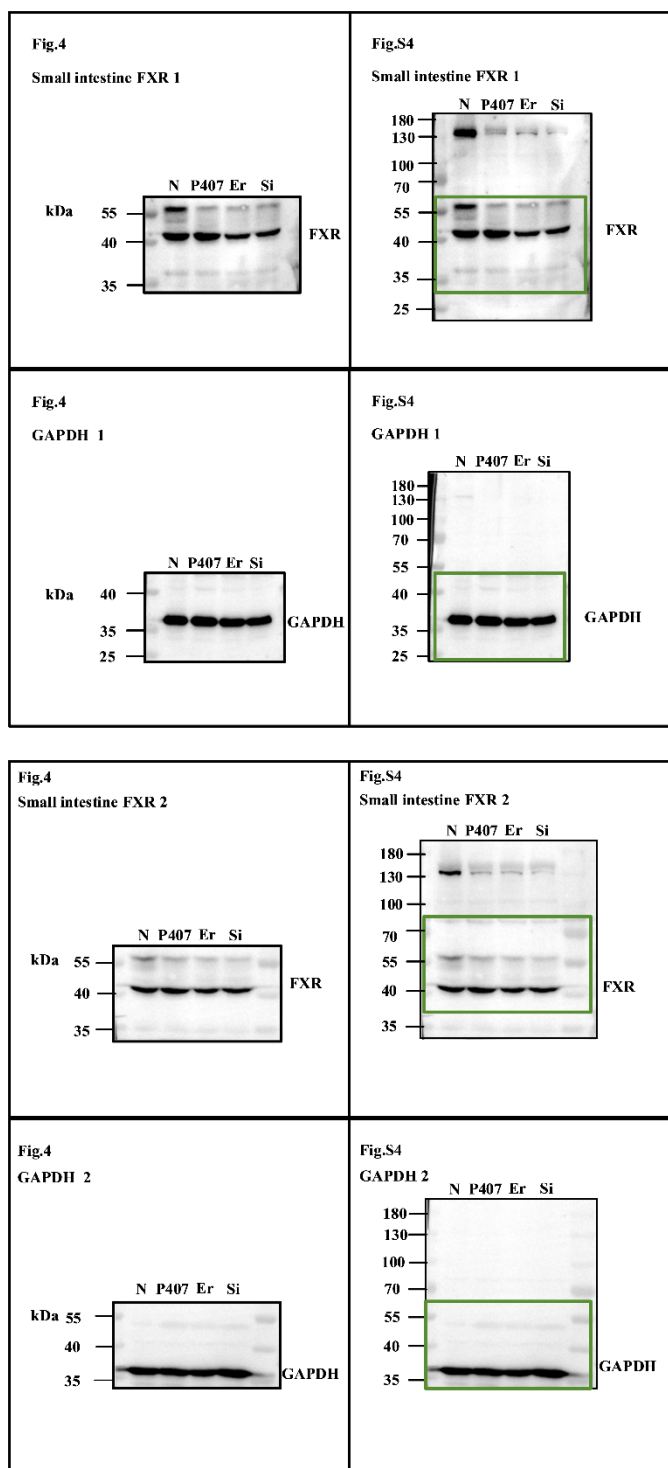
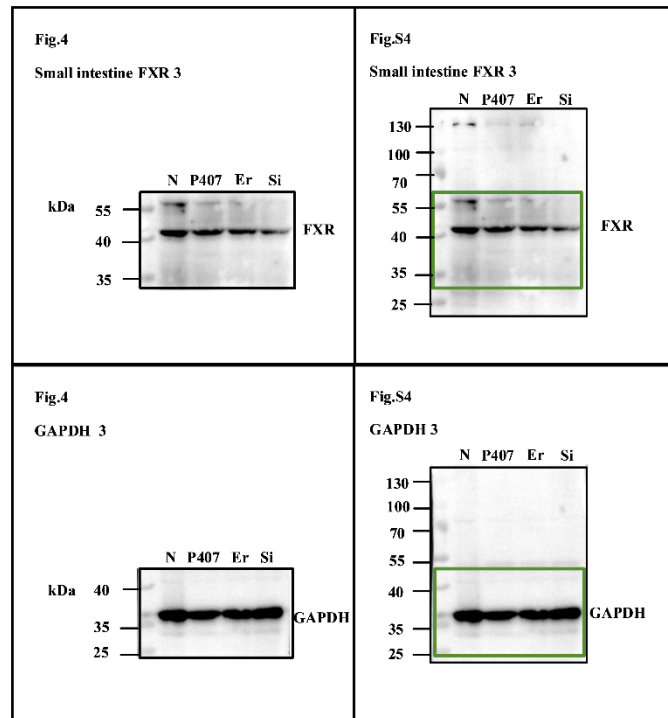


Fig.4 Original Blot Images

1.Original western blot of Small intestine FXR for three repeats.

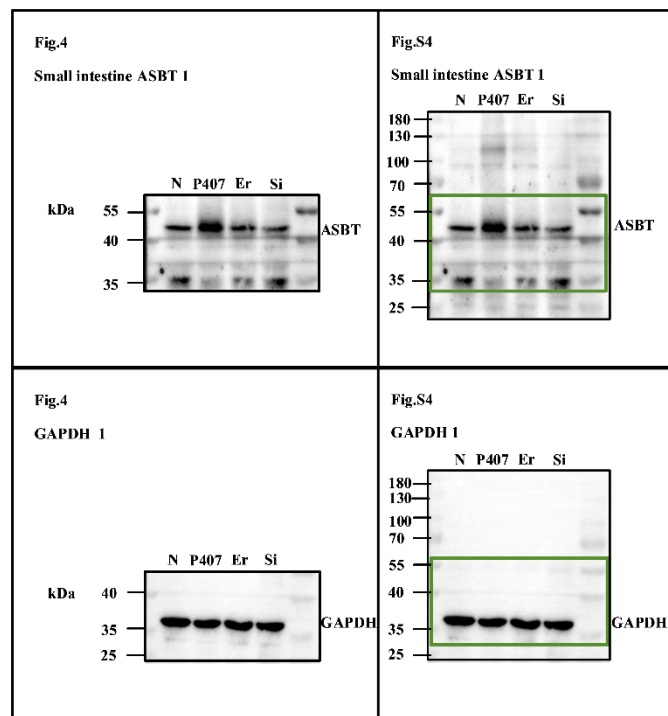
The samples came from the same experiment, and the gels/blots were processed in parallel.

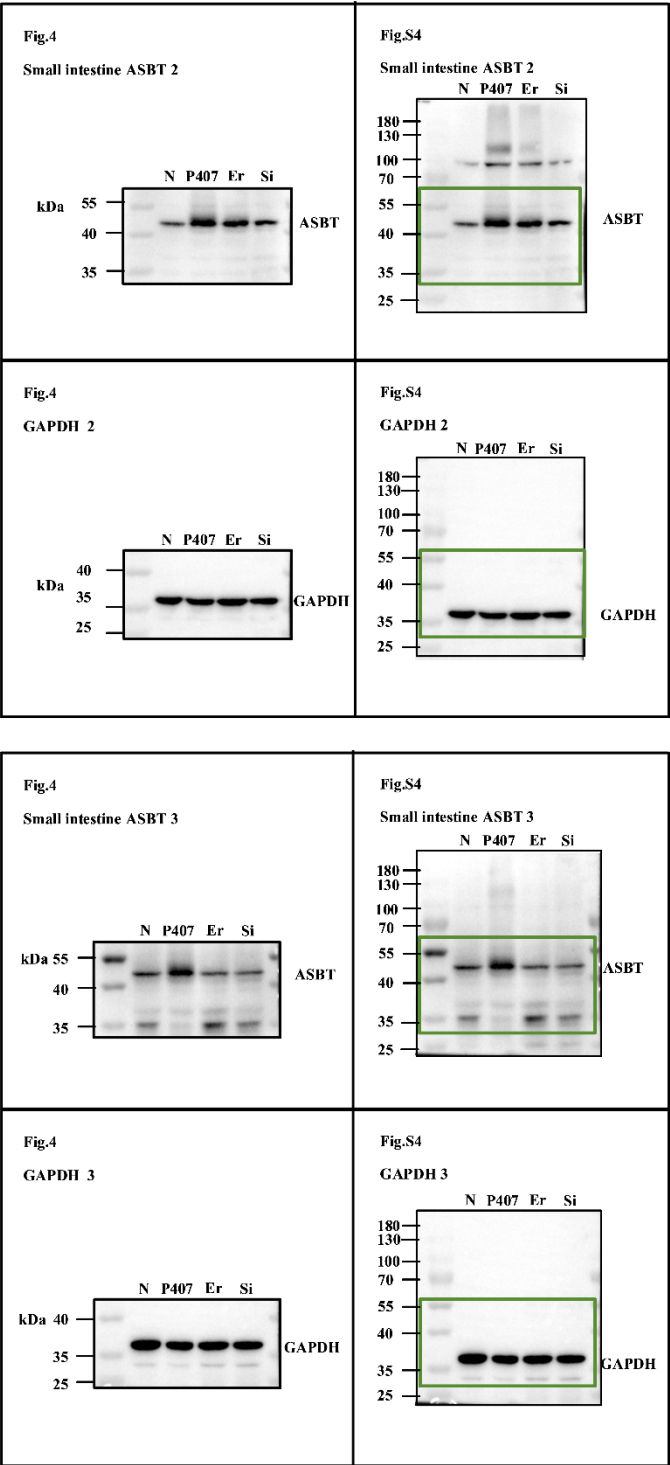




2.Original western blot of Small intestine ASBT for three repeats.

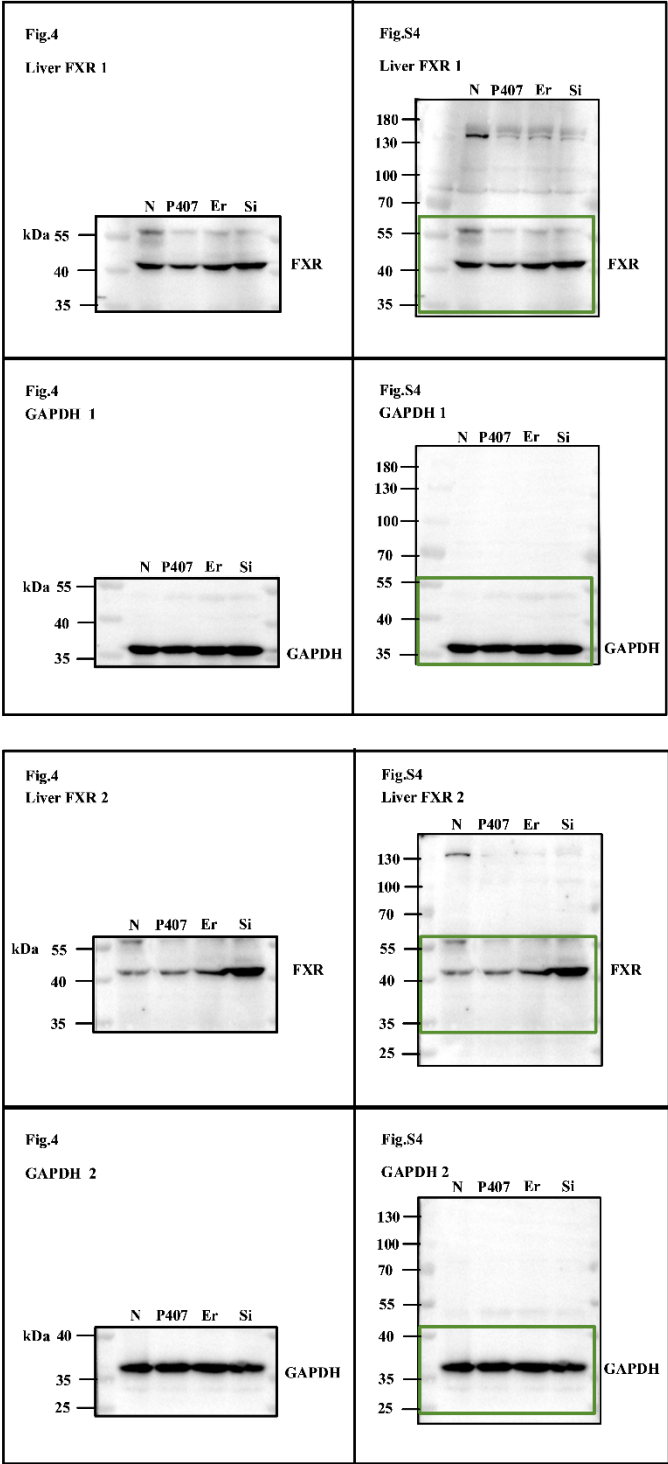
The samples came from the same experiment, and the gels/blots were processed in parallel.

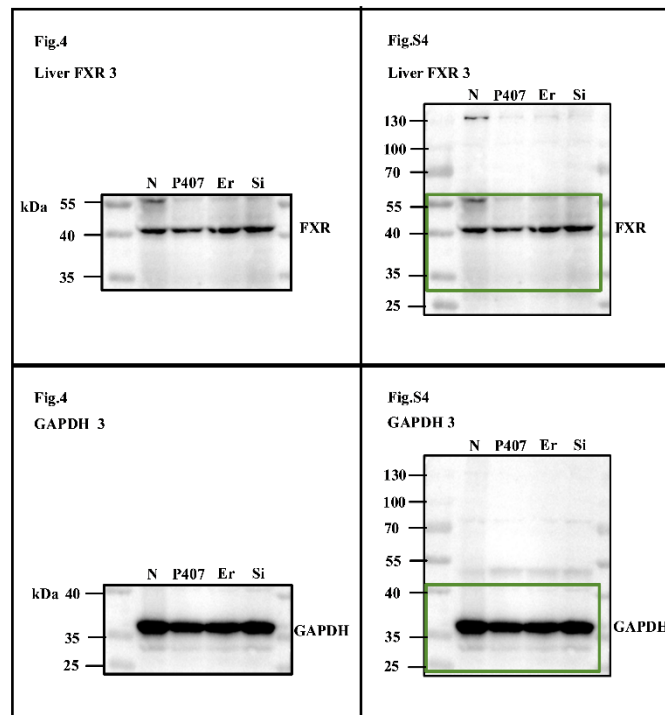




3.Original western blot of Liver FXR for three repeats.

The samples came from the same experiment, and the gels/blots were processed in parallel.





4.Original western blot of Liver NTCP for three repeats.

The samples came from the same experiment, and the gels/blots were processed in parallel.

