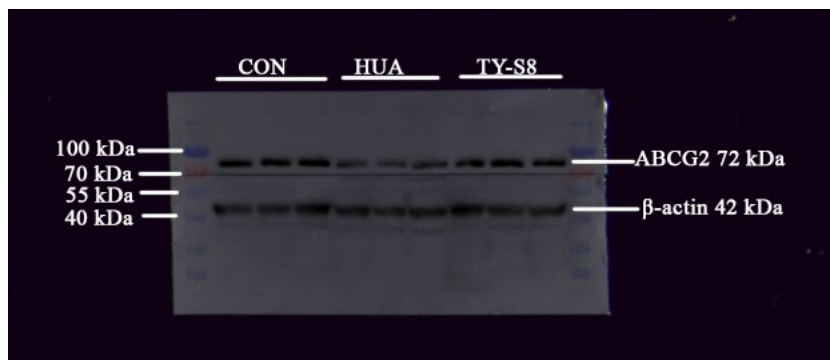


Supplementary Information file for D5FO04423E

Western blot data

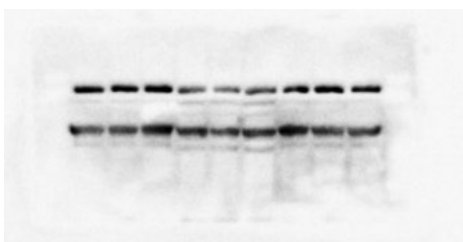
abcg2-1



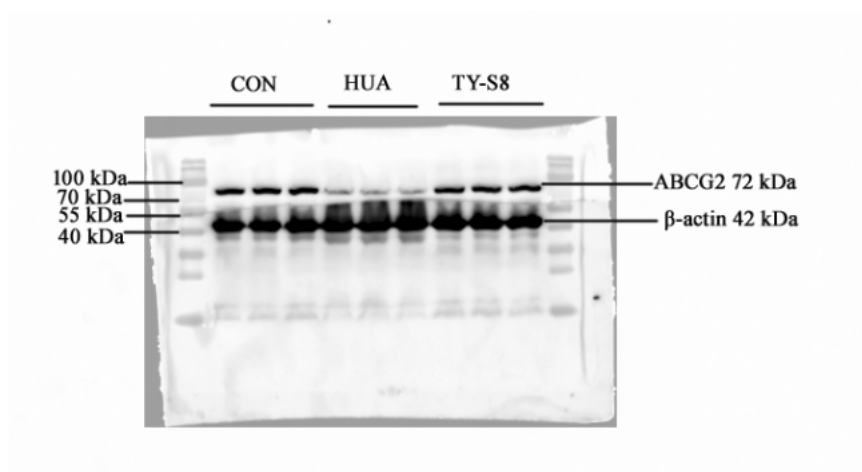
abcg2-2



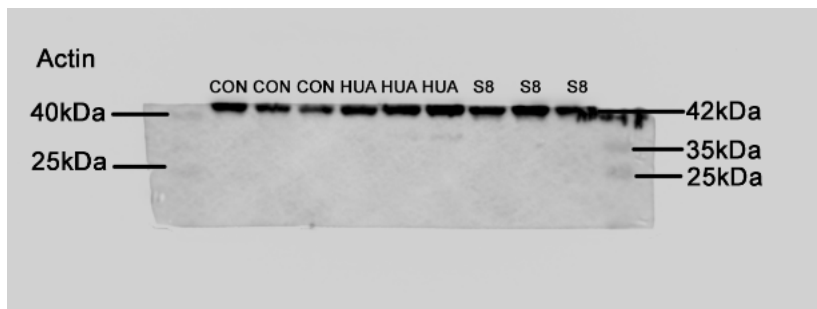
abcg2-3



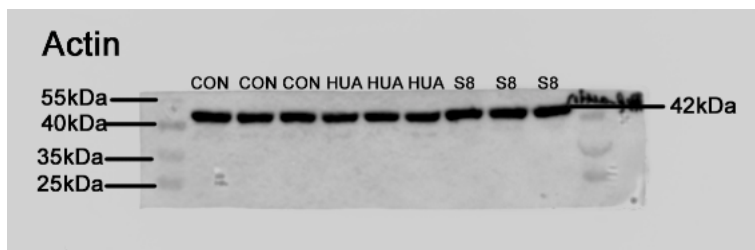
abcg2-kidney



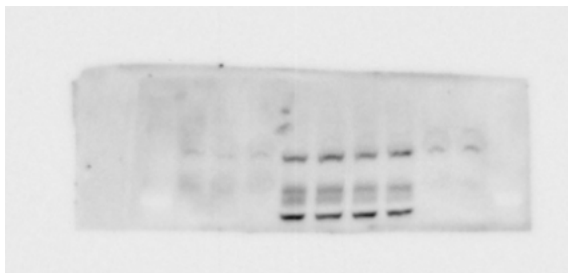
Actin-npt1



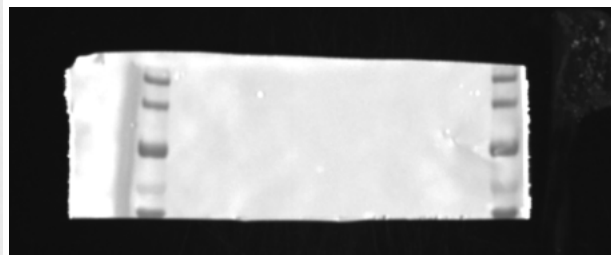
Actin-occludin



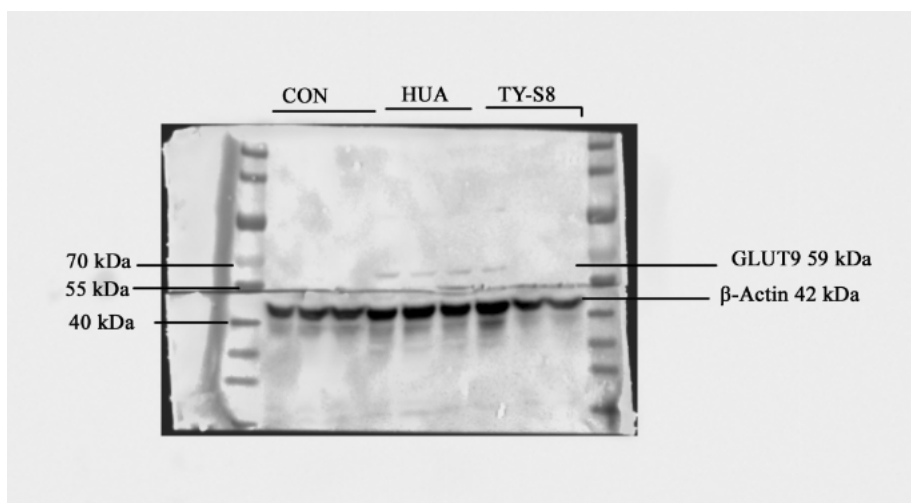
glut9-protein



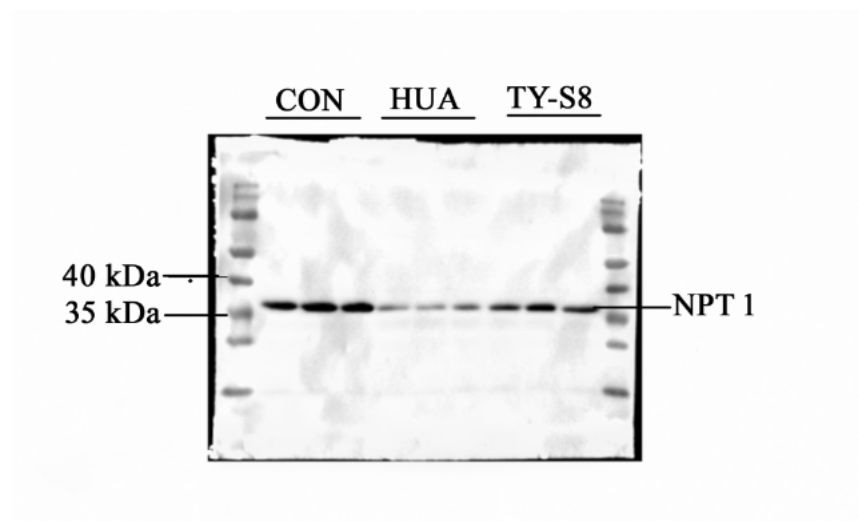
glut9-marker



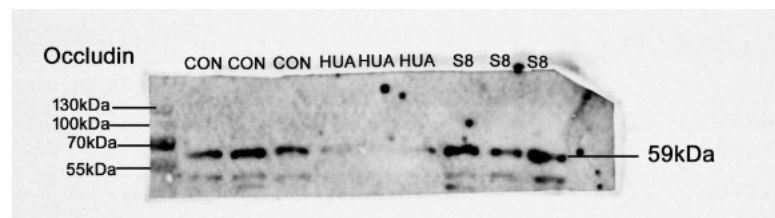
Glut9-protein-marker-actin



npt-1



Occludin



## Explanation of protein band sizes 1

**PS07845**  
**Anti-SLC17A1 Antibody**

☐ 50ul, 100ul

**Abmart**

Order: 021-34695914  
orders@ab-mart.com  
Support: 400-6123-828  
support1@ab-mart.com  
Web: www.ab-mart.com.cn

**Description:**  
NPT1, also called sodium-dependent phosphate transport protein, belongs to the organic anion transporter family, SLC17A. It is mainly expressed in the kidney transporting small organic anions such as PAH (para-aminohippurate), but it is also found in the liver and brain. NPT1 localizes to the apical membrane of renal proximal tubular cells and functions as a voltage driven organic anion/Cl-exchanger. It also plays a role in maintaining phosphate homeostasis. The expression of NPT1 is transcriptionally regulated by HNF-1 and HNF-3 $\beta$ . Indomethacin and salicylate inhibit NPT1-mediated PAH transport.

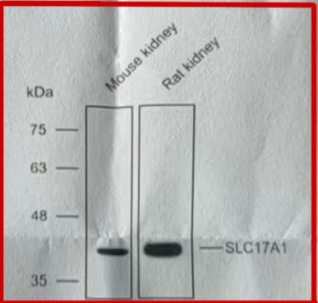
**Alternative Names:**  
Na<sup>+</sup>/Pi cotransporter 1, Na<sup>+</sup>/Pi 4, NAPI 1, SLC17A1

**Gene Symbol :** 6568

**Uniprot :** Q14916

**Uniprot link:**  
<https://www.uniprot.org/uniprot/Q14916>

**Application**  
WB



Western blot analysis with SLC17A1 antibody diluted at 1:1000; Lane: Mouse kidney, Rat kidney.

**Dilution :** WB 1:500-2000.

**Subcellular location :** Transmembrane

## Explanation of protein band sizes 2

