

## The uncropped raw gel images

1

2

3 **Theabrownin Derived from Pu-erh Tea Enhances Intestinal Barrier**

4 **Integrity and Microbiota Balance via the ST6GalNAc6-STn-MUC2**

5

### Axis in Inflammation

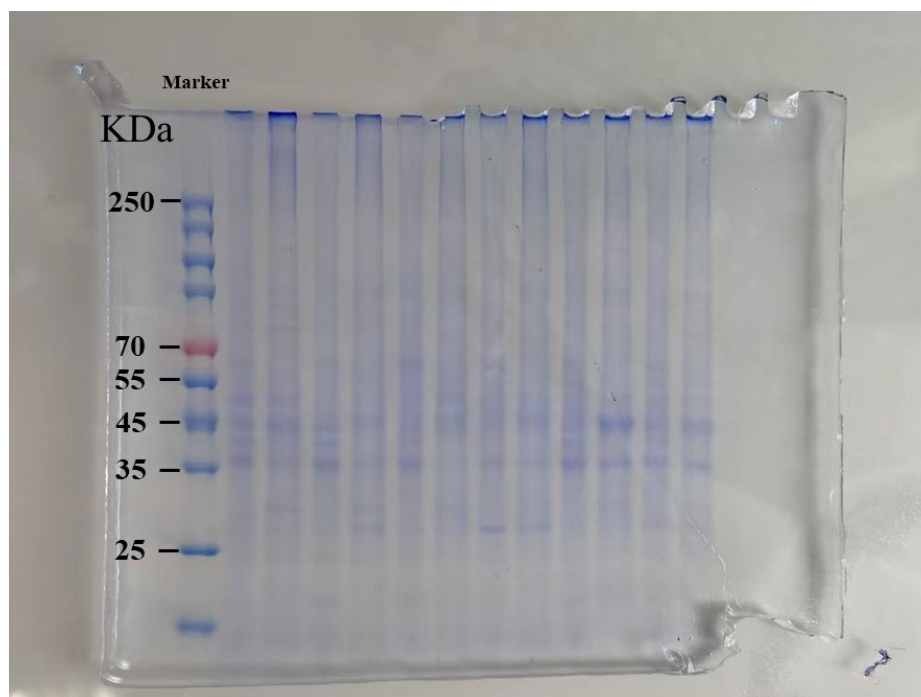
6 Representative full-length SDS-PAGE gel is shown. To maintain consistent

7 electrophoretic conditions for comparative analysis, all samples, including controls and

8 biological replicates (n=2 per condition), were processed on a single gel. Two lanes

9 were not loaded. The image was logically cropped in the article to remove unused lanes

10 and present the relevant data.



**Deglycosylation**  
**Mix II**

- + - + - + - + - + - +  
Control DSS DSS+TB

11

12 **Figure S3** SDS-PAGE verification of deglycosylation in mouse colon.

13