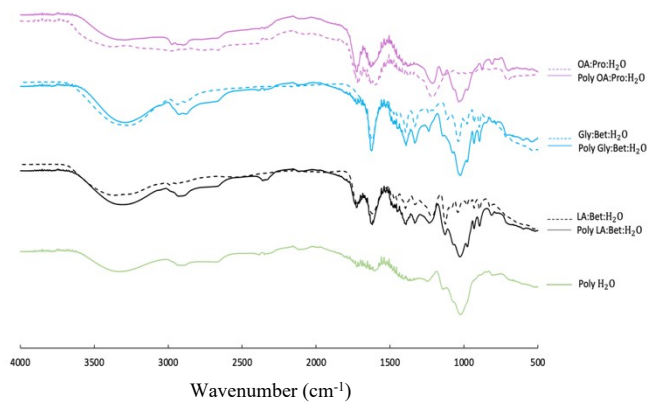
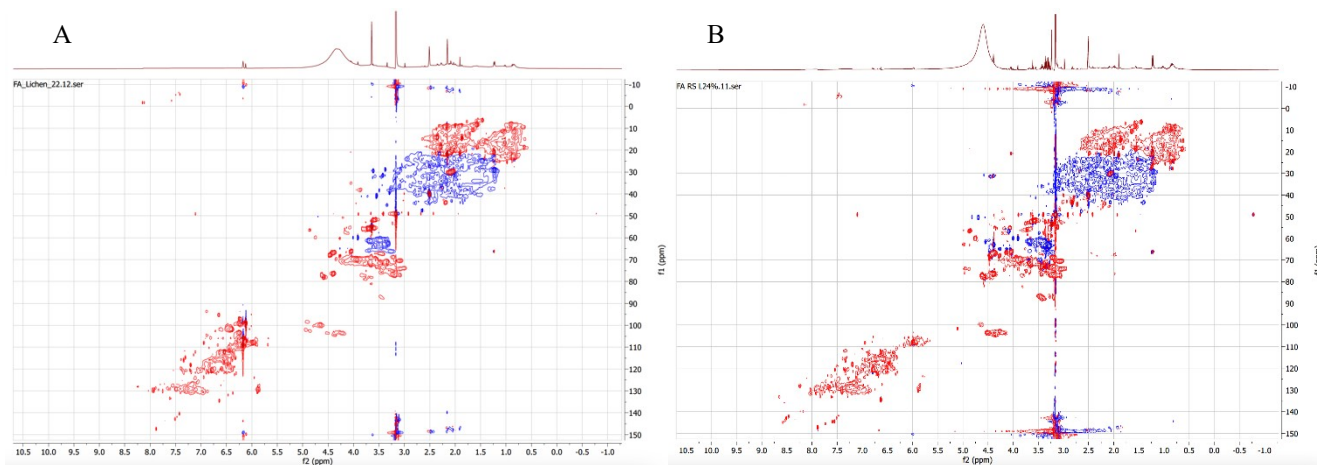


Supplementary material



Supplementary material 1: FT-IR spectrum of the polysaccharides extracted with the different eutectic solvents (continuous) and their corresponding solvent (dash).



Supplementary 2: ¹H-¹³C HSQC NMR spectra of fulvic acid from the raw lichen FA RL22 (A) and from the residual solid FA RSL24 (B)