

Supplementary Materials

Sustainable biodiesel synthesis via non-catalytic transesterification of biomass waste-derived oil and ethanol

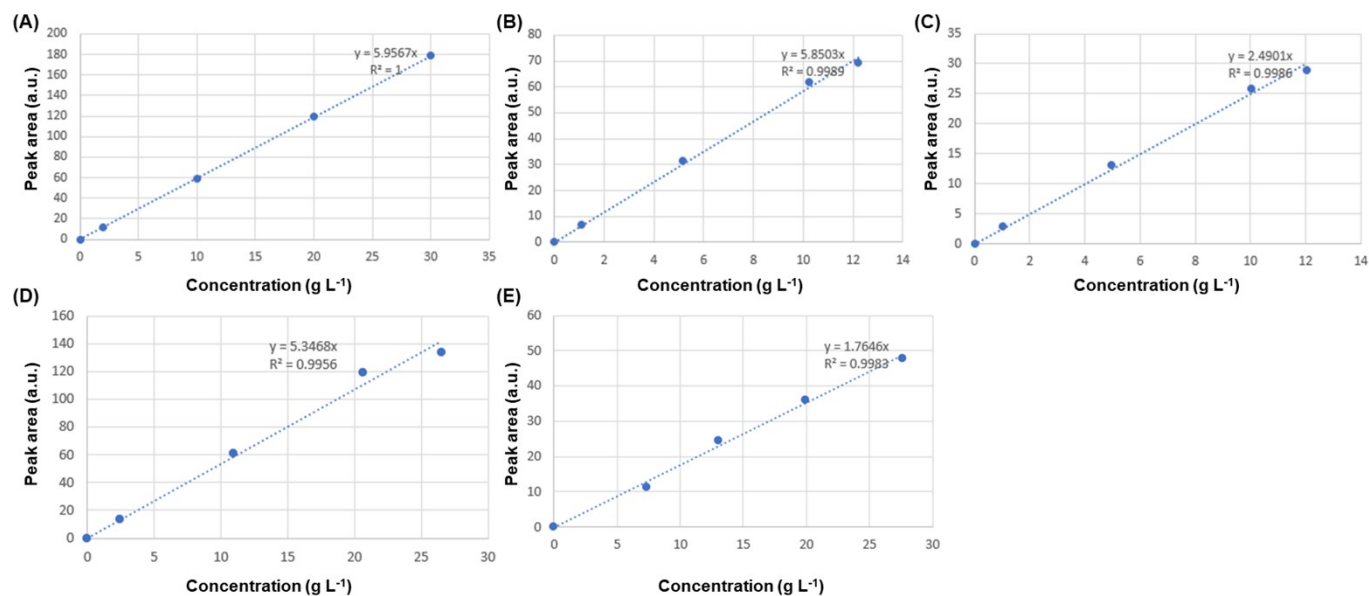


Figure S1. Standard curves of (A) glucose, (B) xylose, (C) ethanol (EtOH), (D) arabinose, and (E) cellobiose

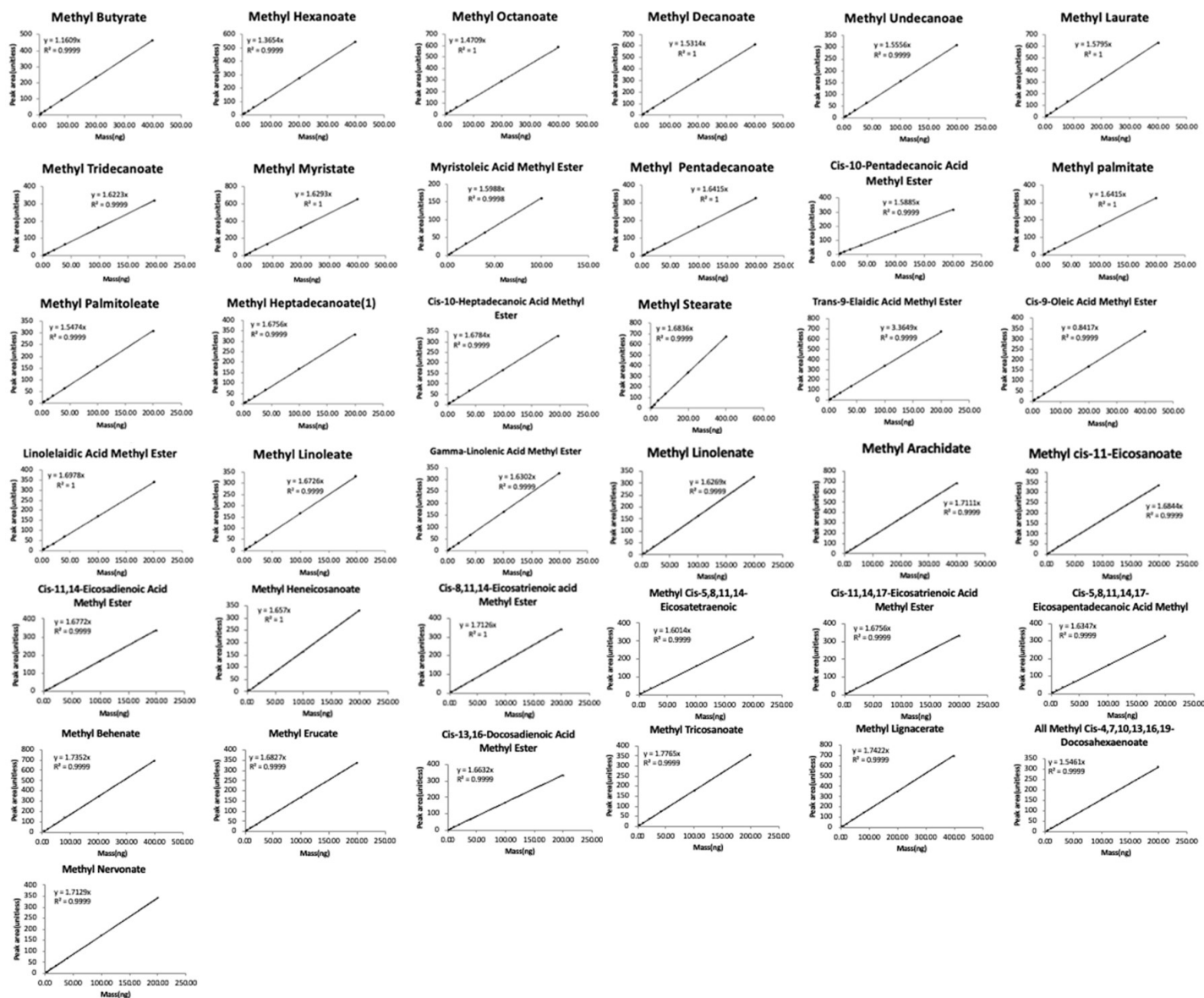


Figure S2. Standard curves of FAME mix

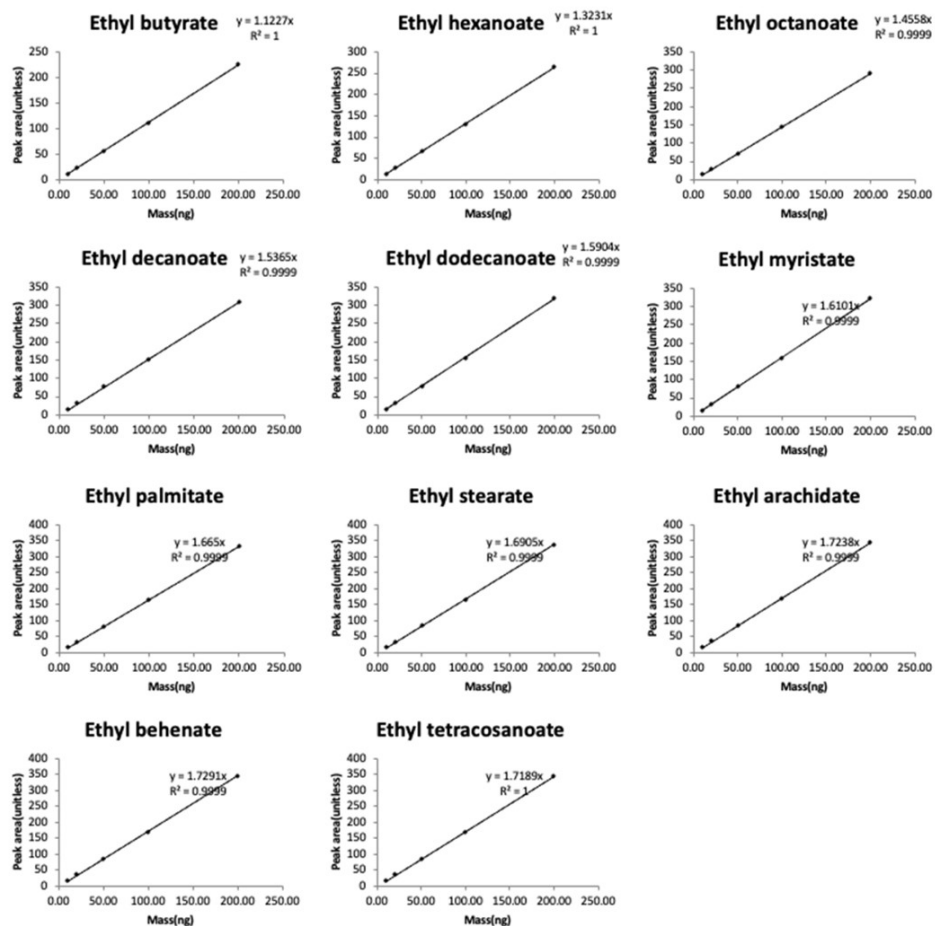


Figure S3. Standard curves of FAEE mix

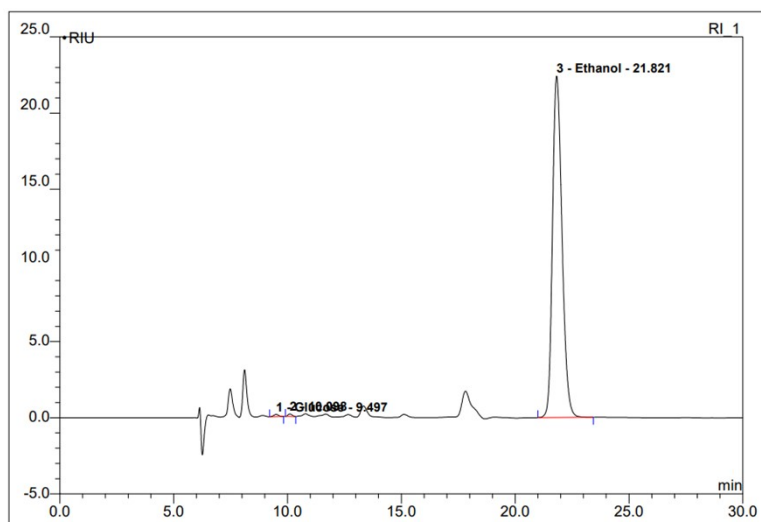


Figure S4. HPLC spectrum of silkworm litter hydrolysate after *P. stipitis* fermentation

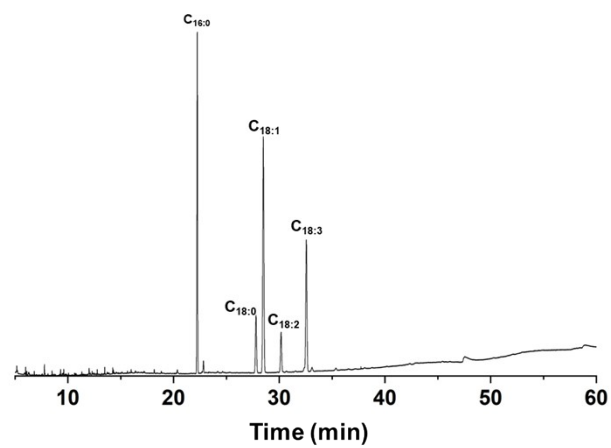


Figure S5. GC/mass spectrometer spectrum of FAME produced using silkworm pupae oil through non-catalytic transesterification

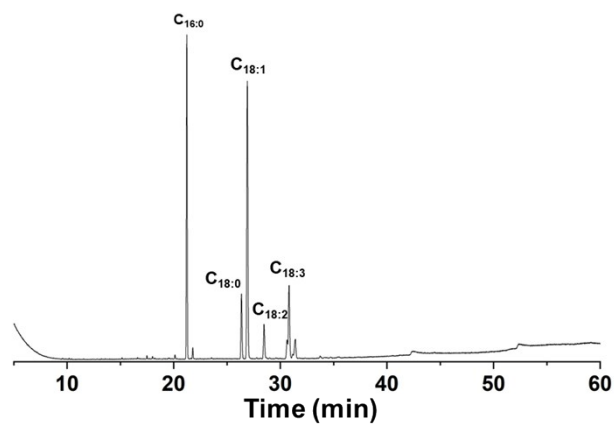


Figure S6. GC/mass spectrometer spectrum of FAEE produced using silkworm pupae oil through non-catalytic transesterification