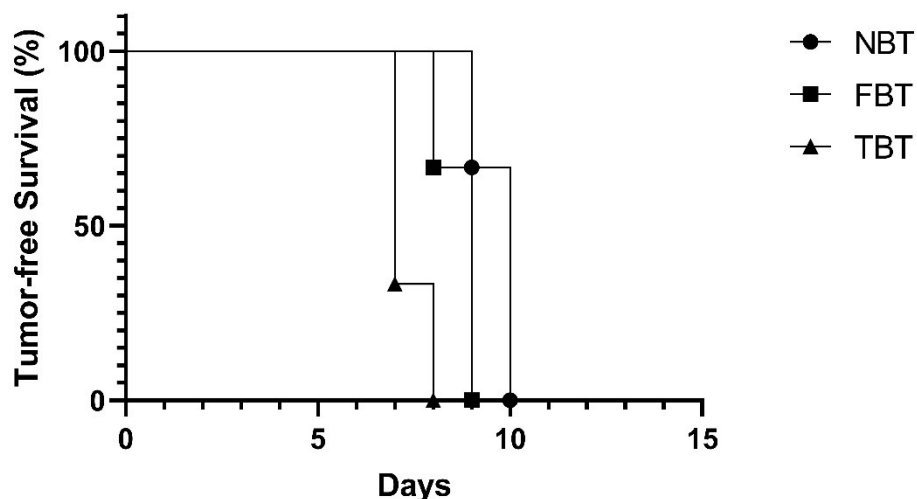


## Impact of Scaffold Stiffness Pre-conditioning on 4T1 Tumor Progression *In Vivo*.



*Supplementary Figure S1. Tumor-free survival curve of mice injected with 4T1 cells pre-cultured on scaffolds mimicking normal breast tissue (NBT), fibrotic breast tissue (FBT), or tumoral breast tissue (TBT). The Kaplan-Meier curve illustrates the percentage of mice remaining tumor-free over time (days). Mice injected with cells pre-conditioned on stiffer scaffolds (TBT) developed palpable tumors significantly faster than those pre-conditioned on FBT and NBT scaffolds. The median tumor latency was 7 days for the TBT group, 9 days for the FBT group, and 10 days for the NBT group. A log-rank test indicated a significant difference among the three groups ( $p=0.0126$ ). Each group consisted of  $n=3$  mice.*