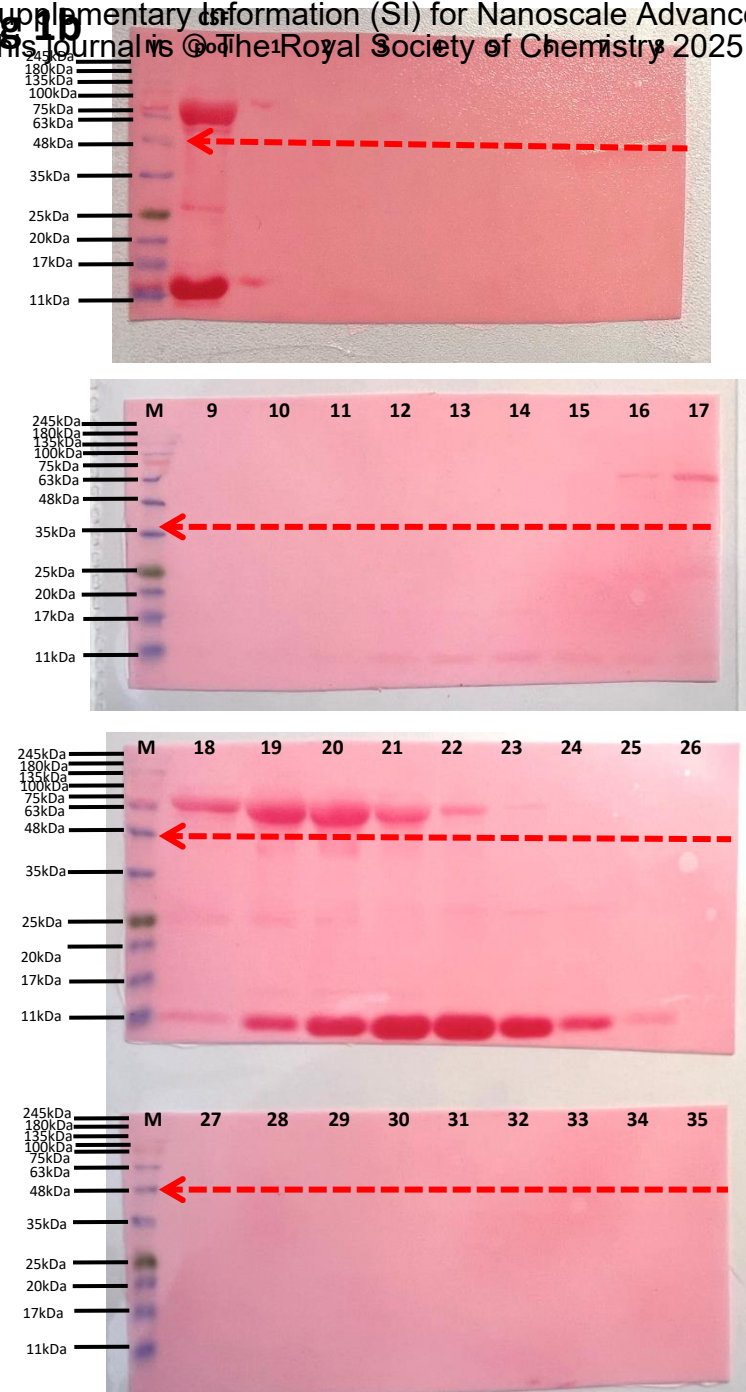


For CD9 lower membranes were marked with a chemiluminescent pen at 25 kDa (and 35 kDa).



Ponceau S staining, red lines represent cutting lines of the membranes

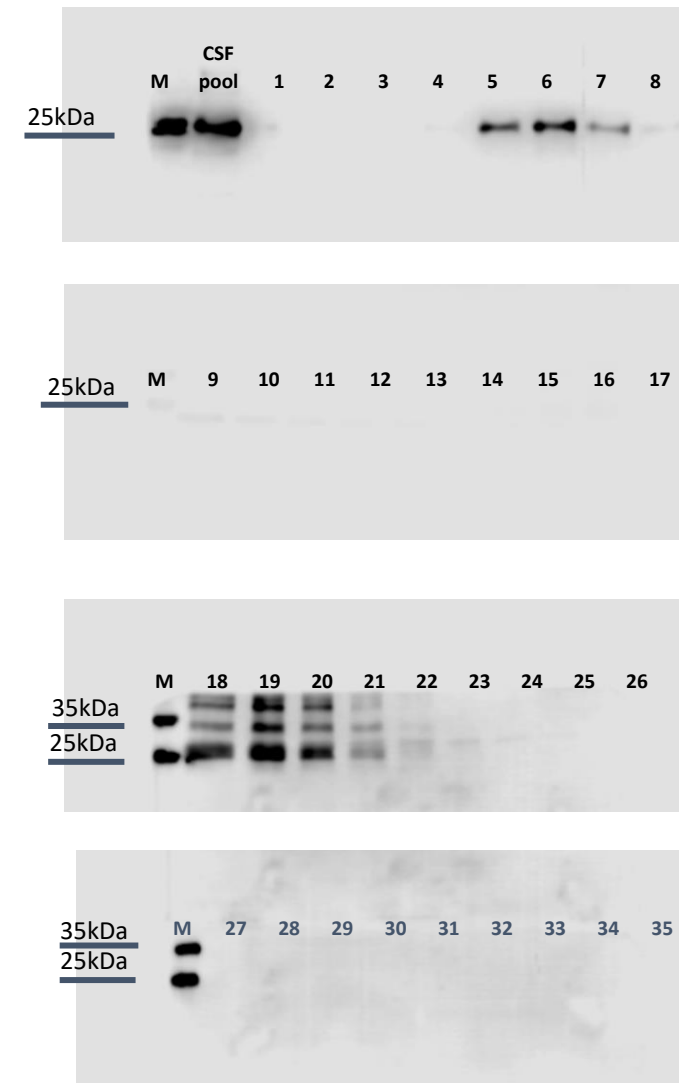
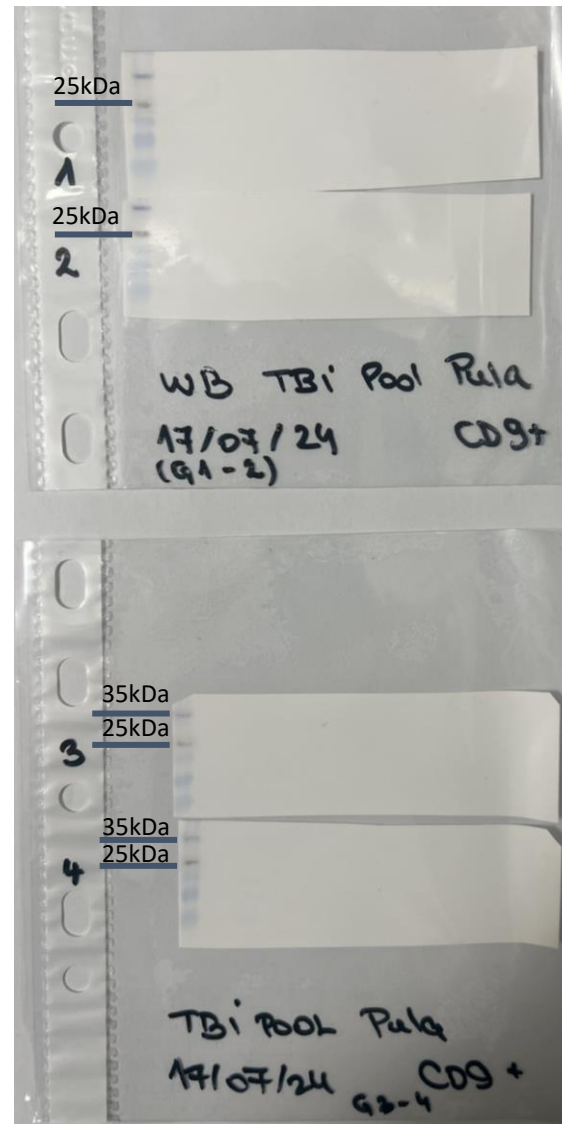
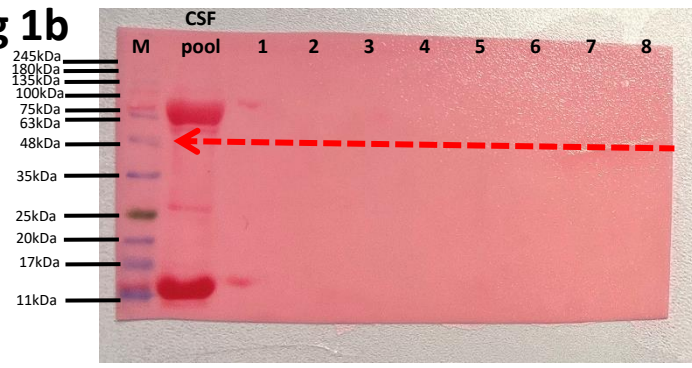
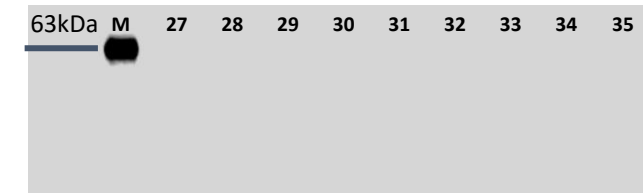
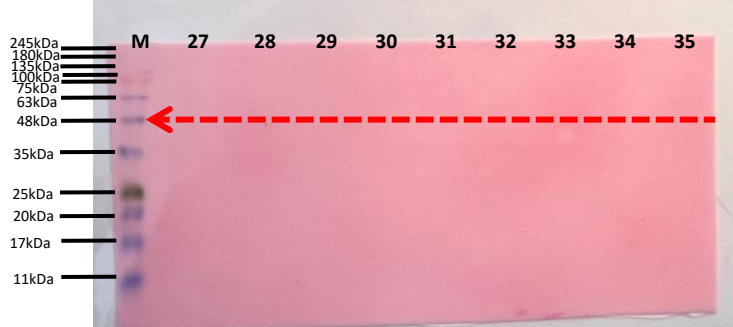
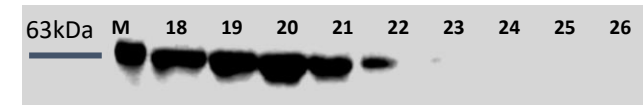
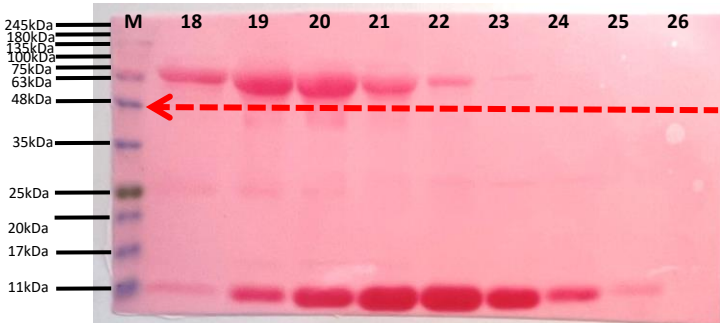
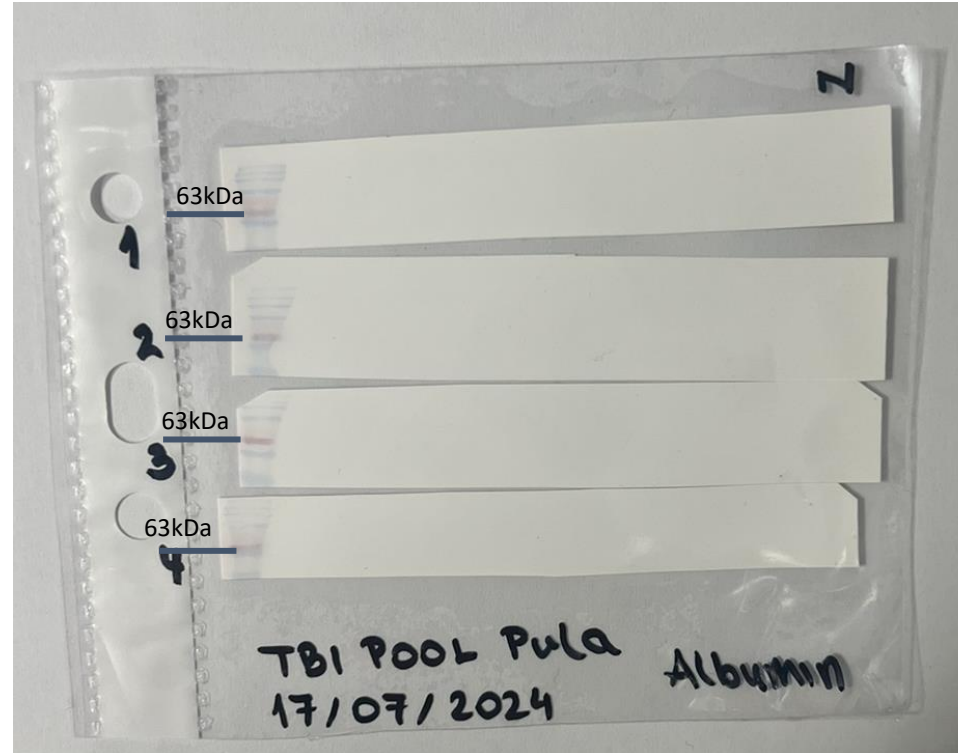
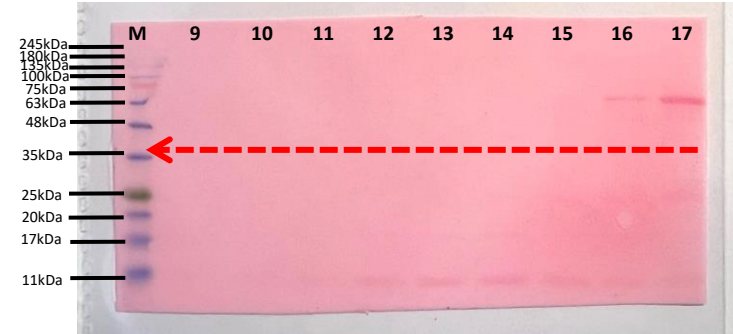
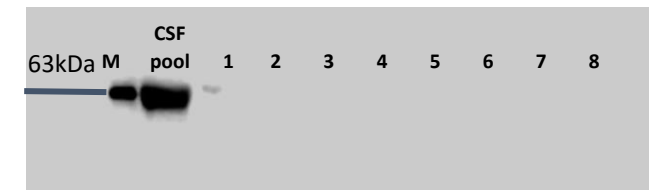


Fig 1b



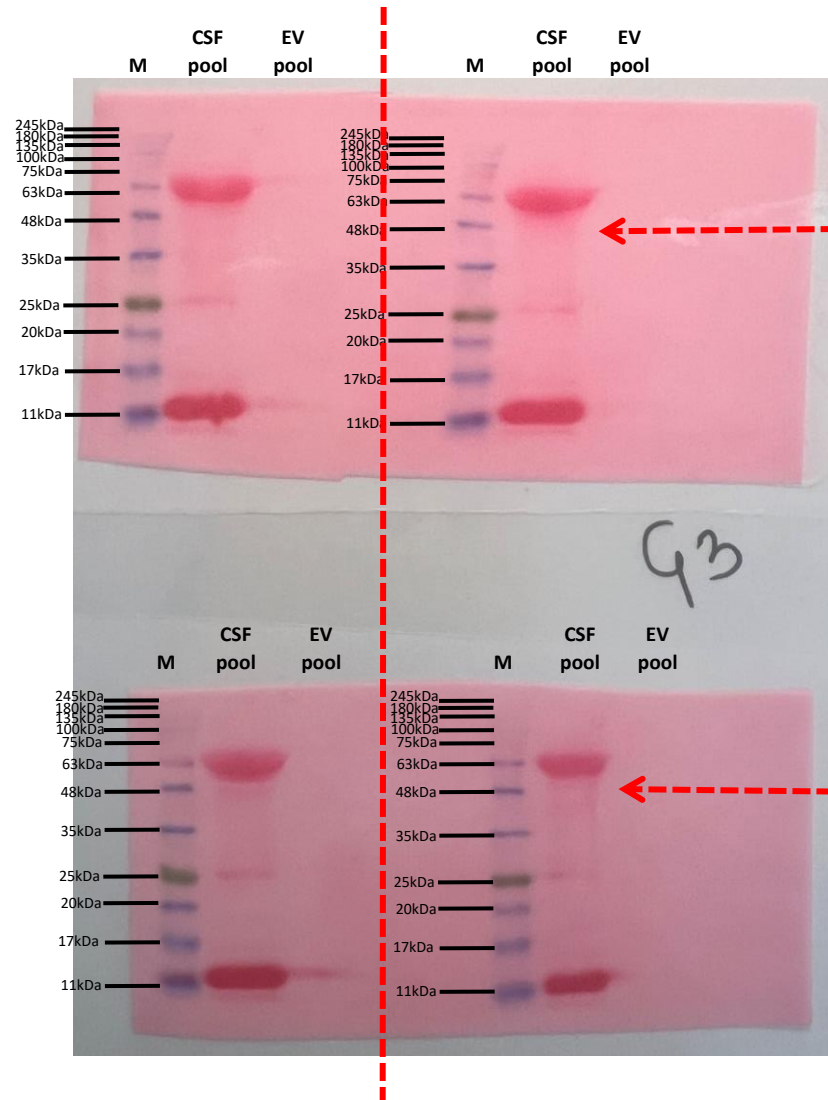
For albumin, upper membranes were marked with a chemiluminescent pen at 63 kDa.



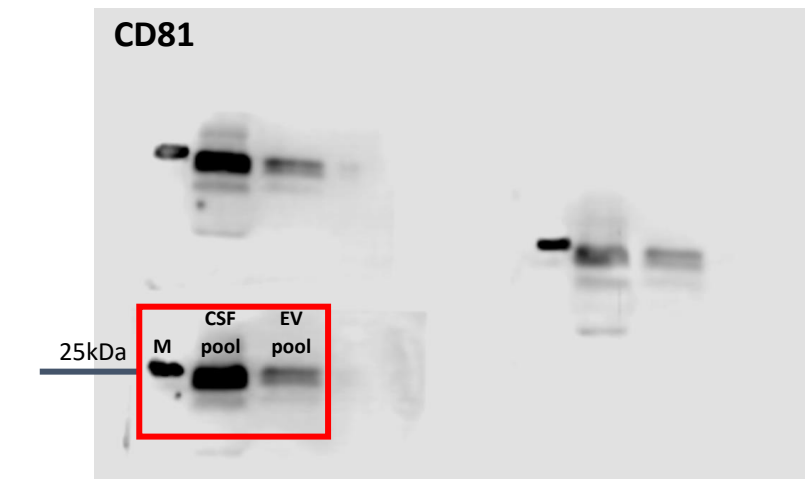
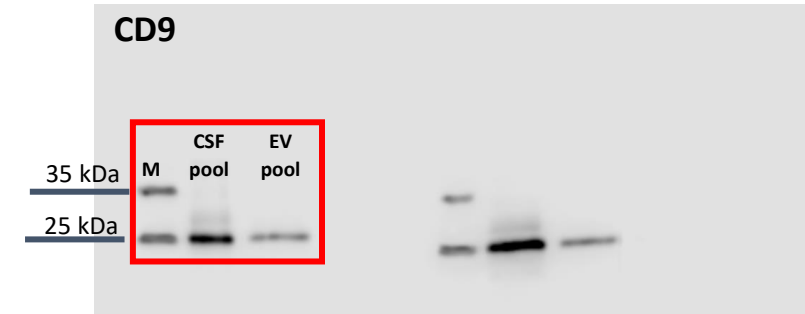
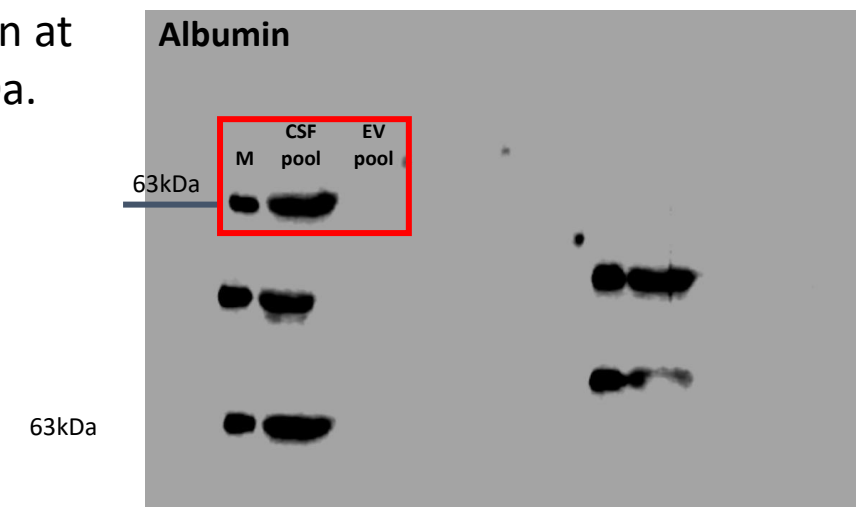
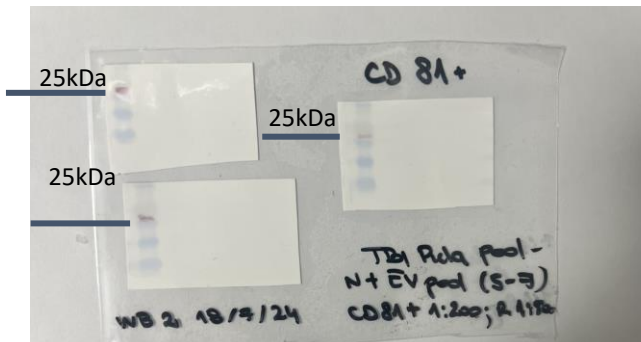
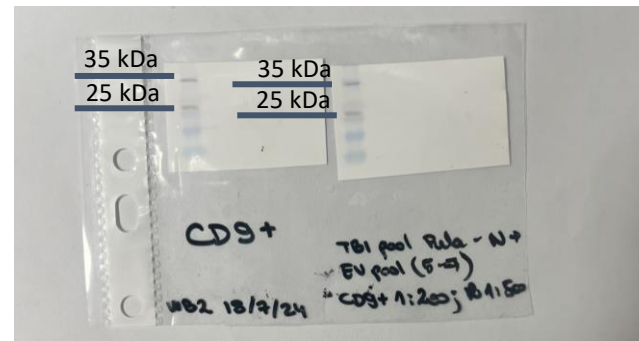
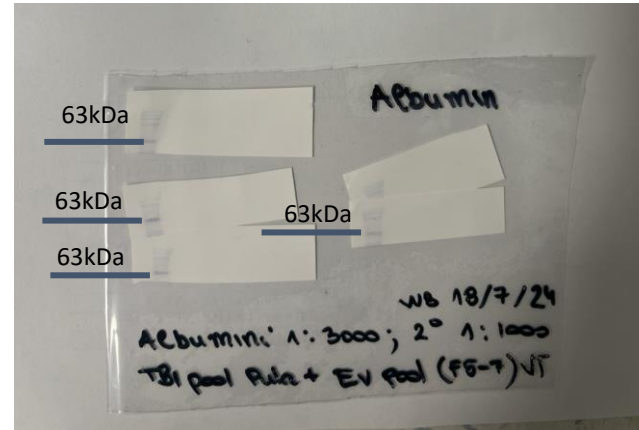
Ponceau S staining, red lines represent cutting lines of the membranes

Fig 1c

For albumin upper membranes were marked with a chemiluminescent pen at 63 kDa, for CD9 lower membranes at 25kDa and 35 kDa; for CD81 at 25kDa.

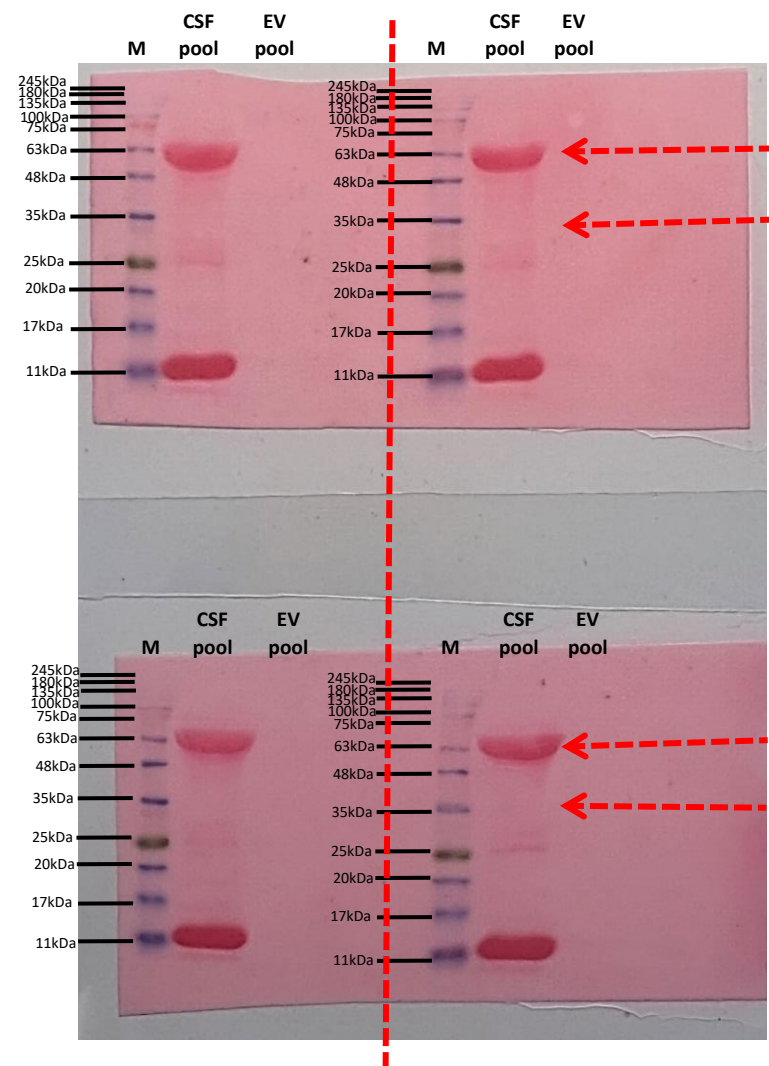


Ponceau S staining, red lines represent cutting lines of the membranes

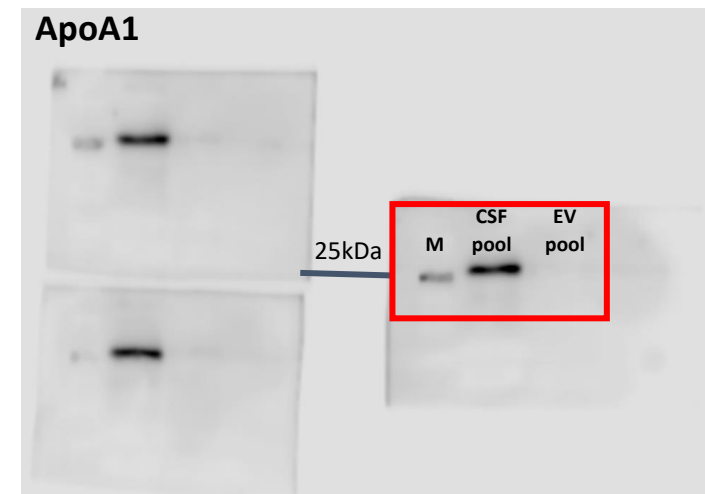
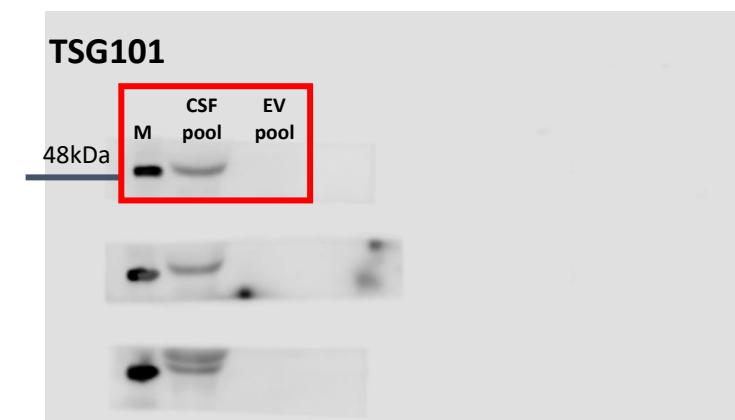
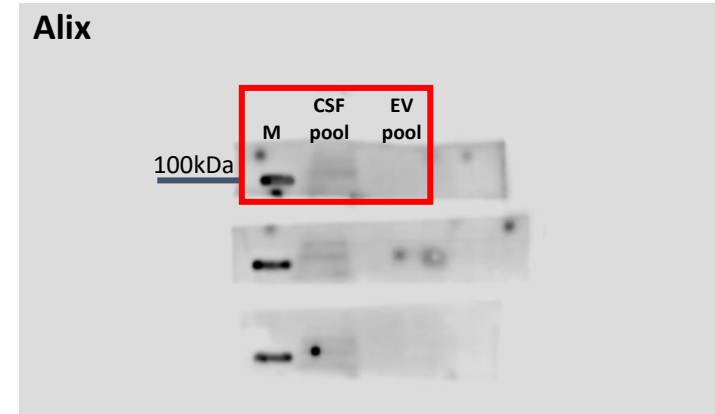
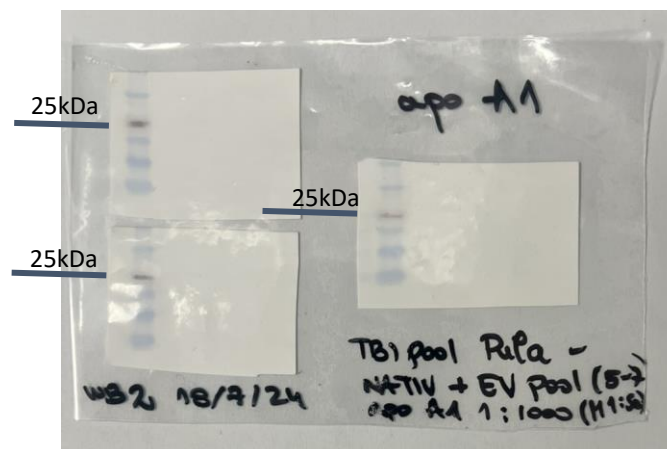
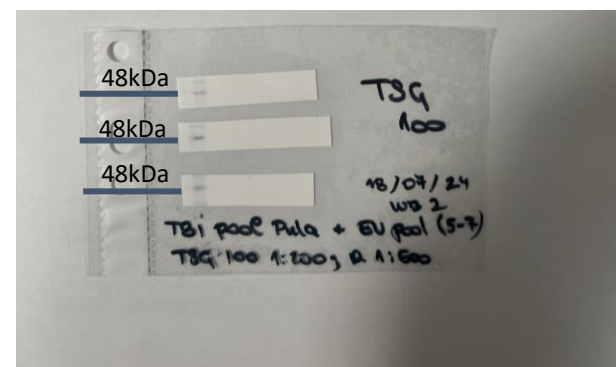
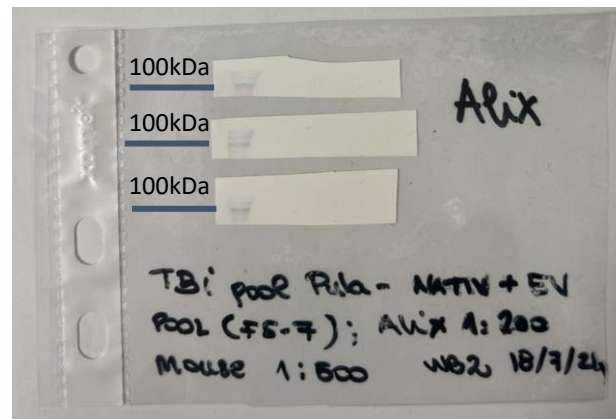


Red squares selected for Figure 1c

Fig 1c For Alix upper membranes were marked with chemiluminescent pen at 100 kDa, for TSG101 middle membranes at 48 kDa, for ApoA1 lower membranes at 25 kDa



Ponceau S staining, red lines represent cutting lines of the membranes



Red squares selected for Figure 1c