

Supporting Information

$\text{La}_{0.6}\text{Sr}_{0.4}\text{Co}_{0.2}\text{Fe}_{0.8}\text{O}_{3-\delta} @ (\text{Ce}_{0.80}\text{Gd}_{0.20})\text{O}_2$ Nanofibre Composites as Oxygen Electrodes for Reversible Solid Oxide Cells

Keda Wang^a, Jing Yu^{a,b*}, Yuyang Zu^a

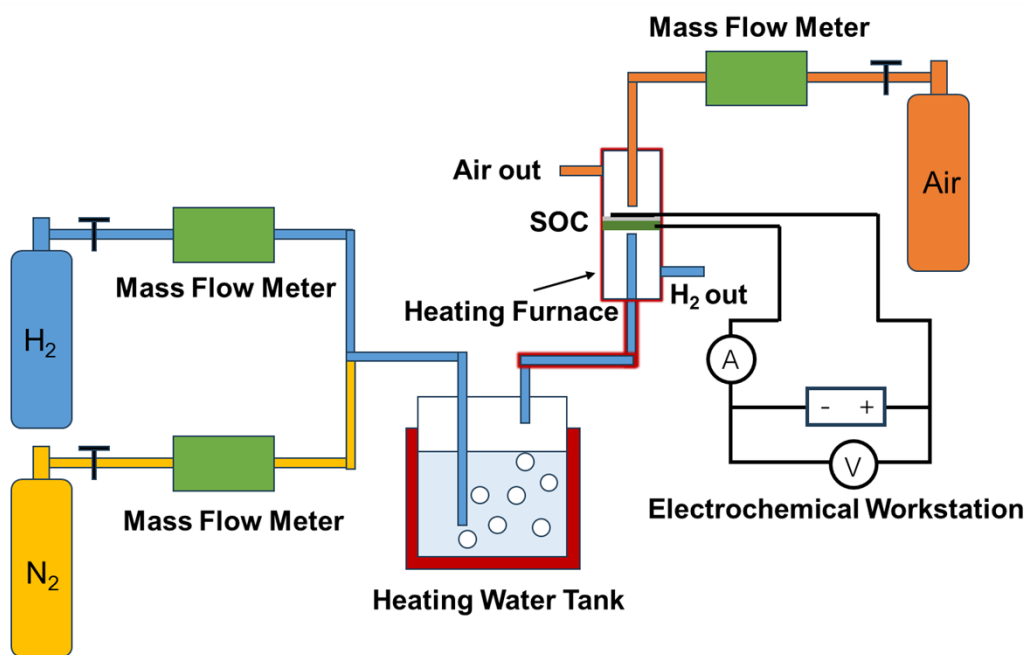


Figure S1. Schematic illustration of electrochemical measurements.

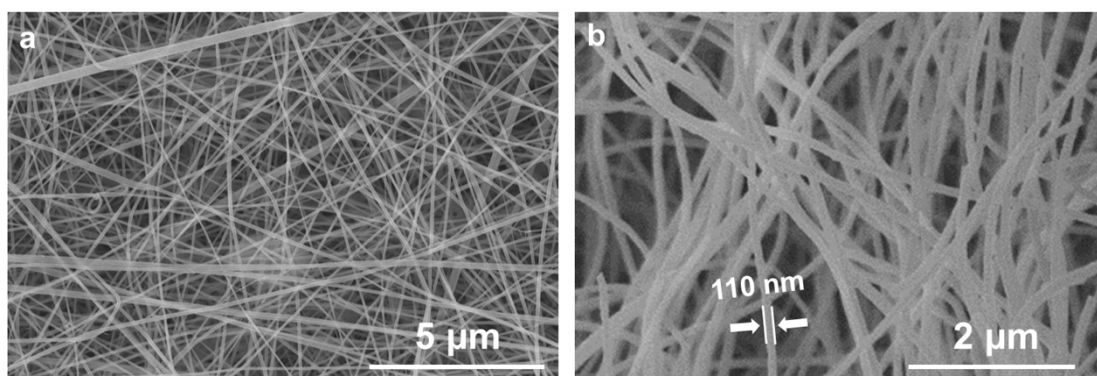


Figure S2. SEM images of LSCF@GDC precursor nanofibers before sintering.

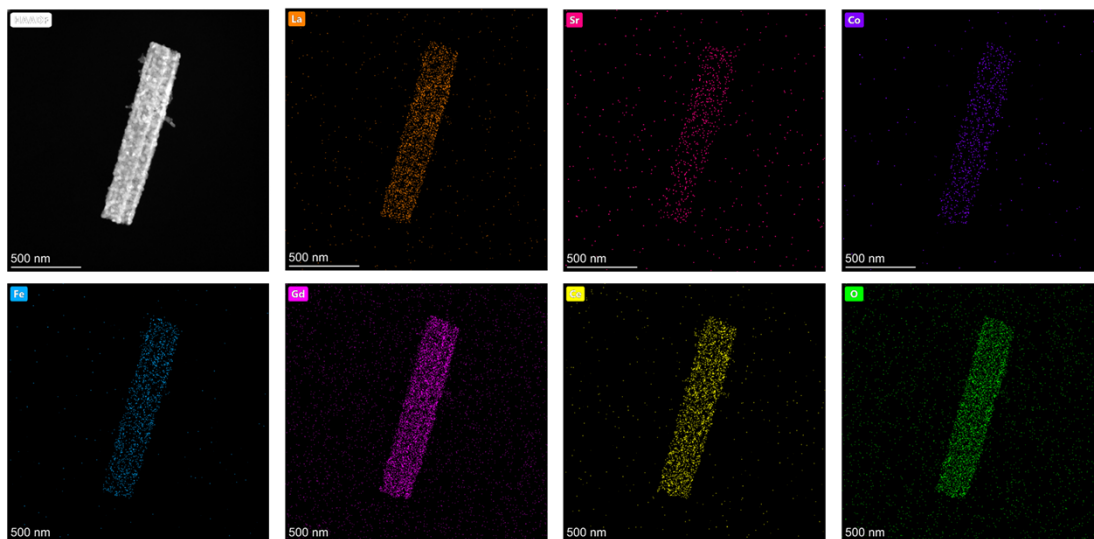


Figure S3. The HAADF image of LSCF@GDC nanofibre composite, and EDS mapping images of the corresponding elements.

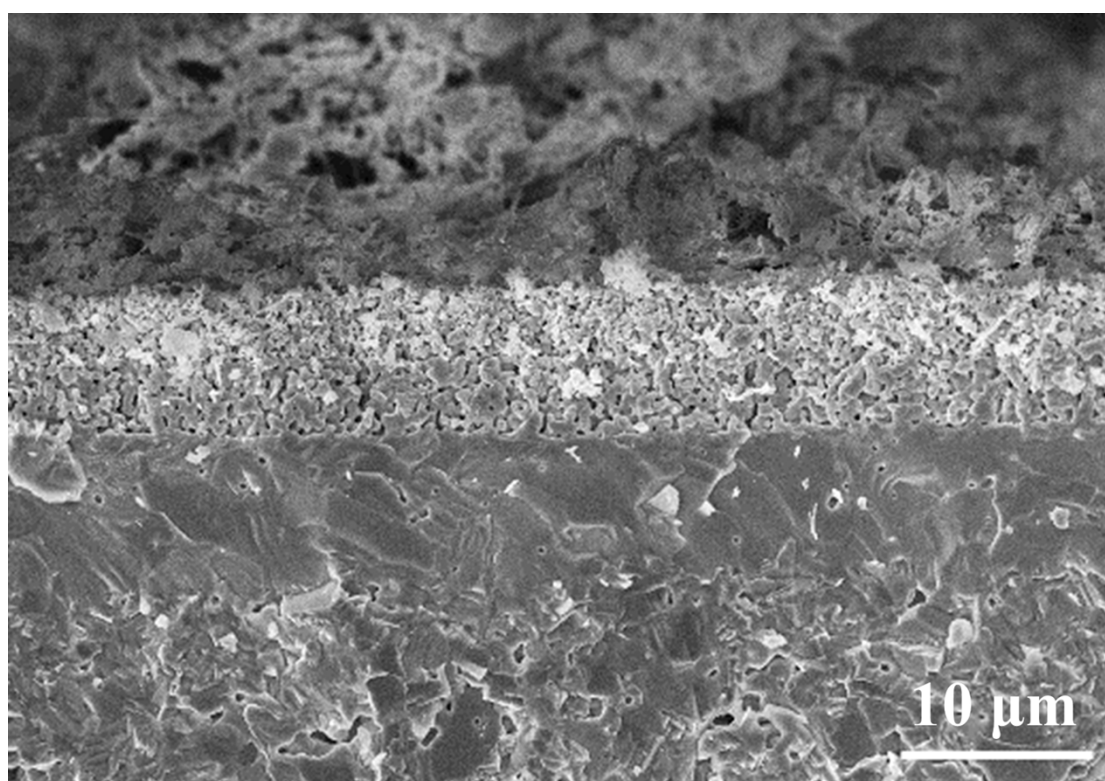


Figure S4. Cross-sectional SEM of NiO@3YSZ/8YSZ/GDC/LSCF@GDC after cycle testing.