

Synergistic Nanoplatform of M1 Macrophage-Derived Extracellular Vesicles and MoS₂ for Tumor-Targeted Photoimmunotherapy in Bladder Cancer

Supplementary data

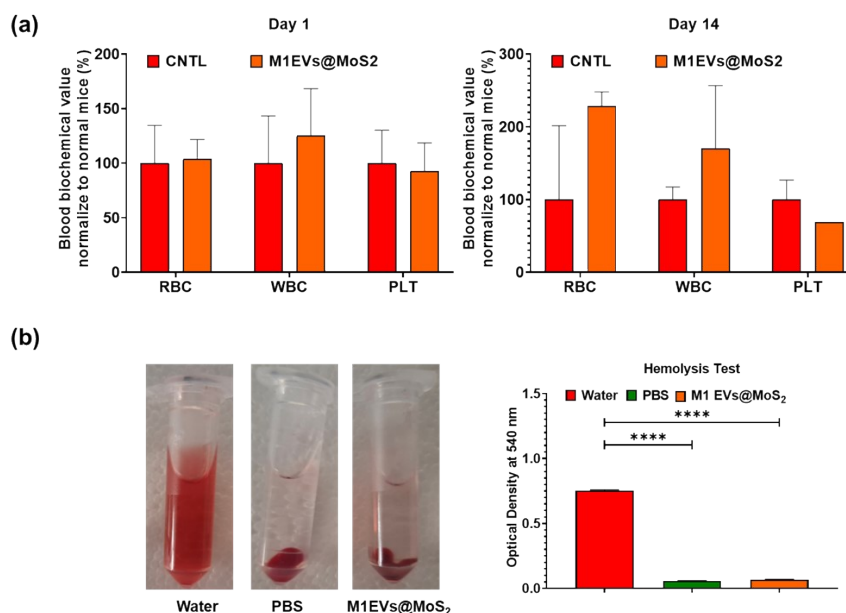


Figure S1: Blood compatibility of M1-EVs@MoS₂. (a) Blood biochemical analysis on Days 1 and 14 showed stable RBC and PLT levels with a mild WBC increase, indicating no hematological toxicity. (b) Hemolysis assay showed minimal lysis with M1-EVs@MoS₂, confirming good hemocompatibility.

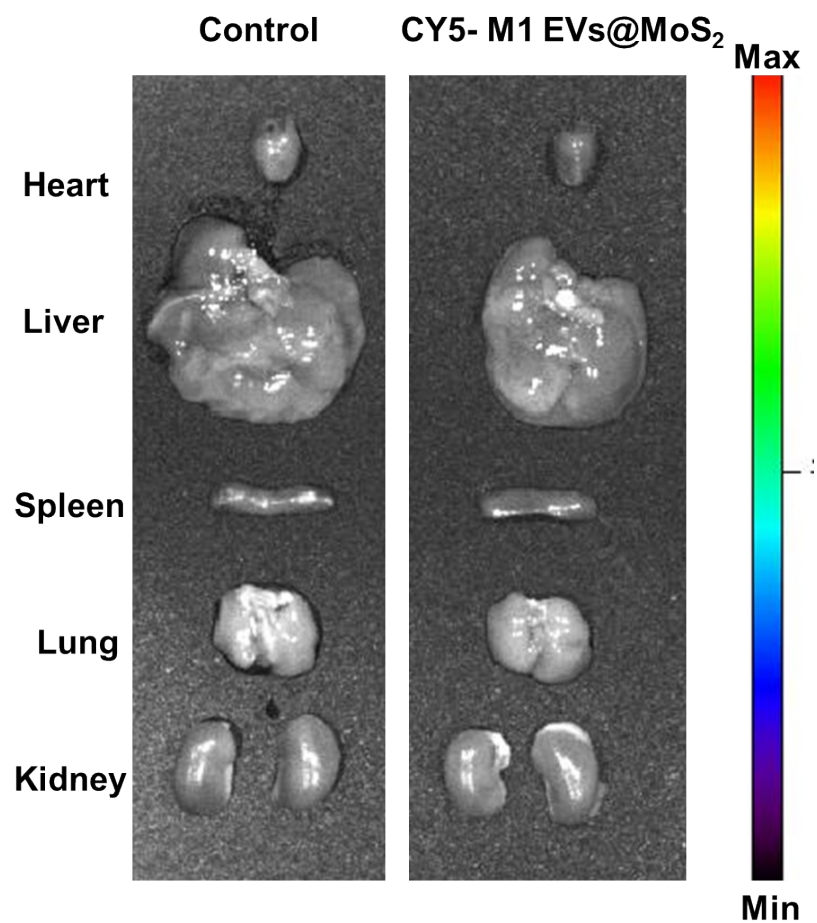


Figure S2: IVIS imaging of Cy5-labeled M1-EVs@MoS₂ showing in vivo biodistribution over time. Initial strong fluorescence at the tumor site gradually diminished, with no detectable signal by Day 14, indicating effective clearance and minimal long-term accumulation.