

Electronic Supplementary Material (ESI) for Journal of Materials Chemistry C

Supporting Information

Temperature-insensitive and wide-range linear tactile electronic skins for reliable shape and texture recognition

*Longwei Xue, Li Yuan, Jixing Zhou, Junshuai Dai, Xudong Zhang, Hong Hu, Hai Liu, and Tingting Zhao**

L. Xue, L. Yuan, J. Zhou, J. Dai, X. Zhang, H. Liu, T. Zhao
Key Laboratory of Advanced Display and System Applications of Ministry of Education
Shanghai University
Shanghai, 200072, China
E-mail address: ttzhao@shu.edu.cn (Tingting Zhao)
X. Zhang, T. Zhao
Shanghai Key Laboratory of Intelligent Manufacturing and Robotics
Shanghai University
Shanghai, 200444, China
L. Xue, H. Hu
The School of Microelectronics
Shanghai University
Shanghai, 201800, China

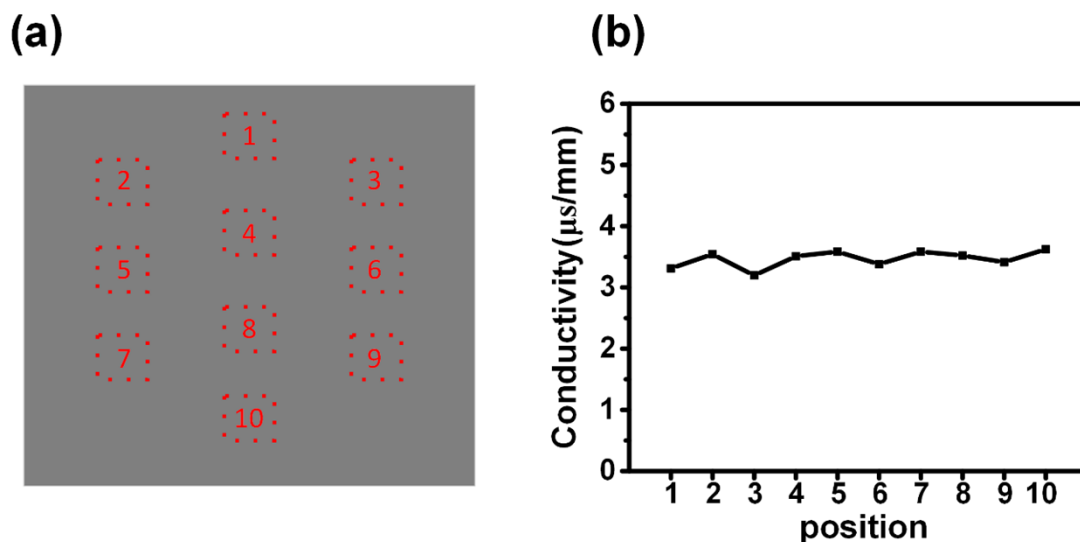


Figure S1. (a) Randomly selected conductivity testing areas, (b) Conductivity test results of the sensitive material in different areas.

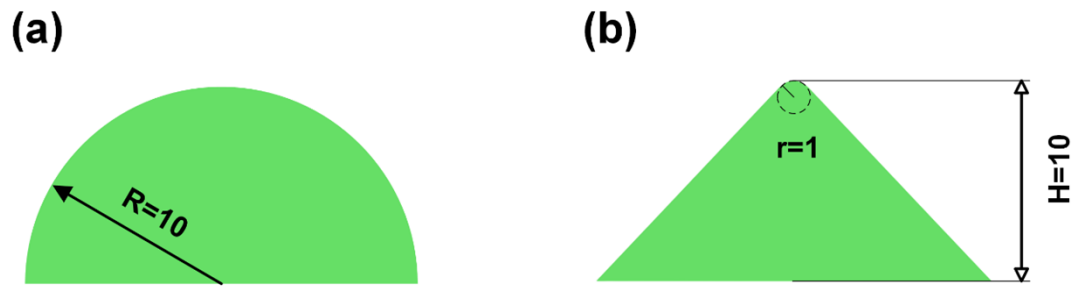


Figure S2. The cross-section views of (a) hemisphere structure, (b,c) cone structure with different top fillet radii in Finite Element Analysis (FEA).

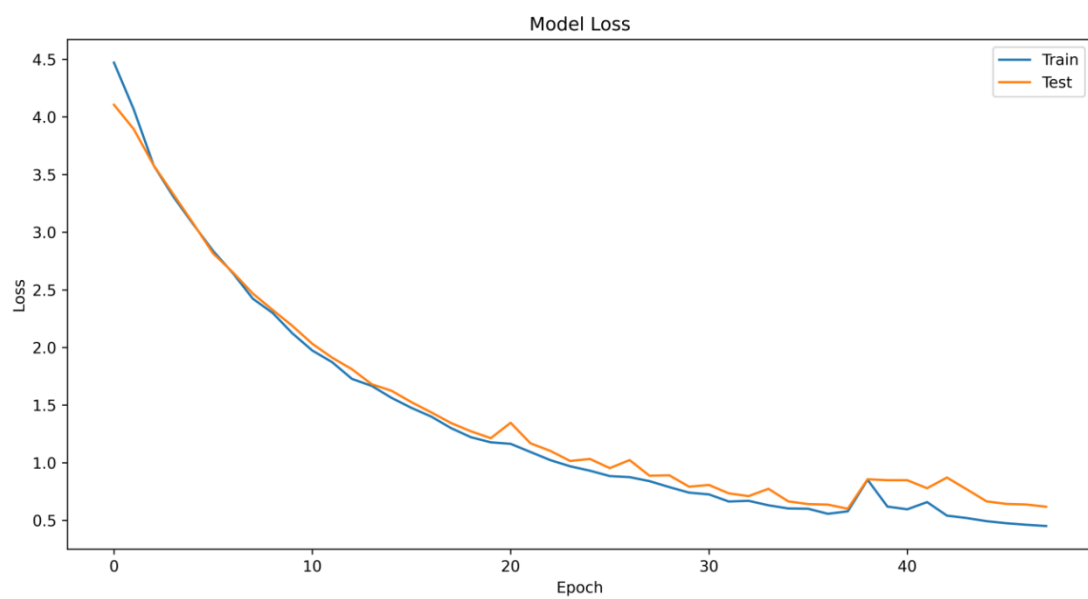


Figure S3. Shows a training and validation loss rate chart for 100 epochs.

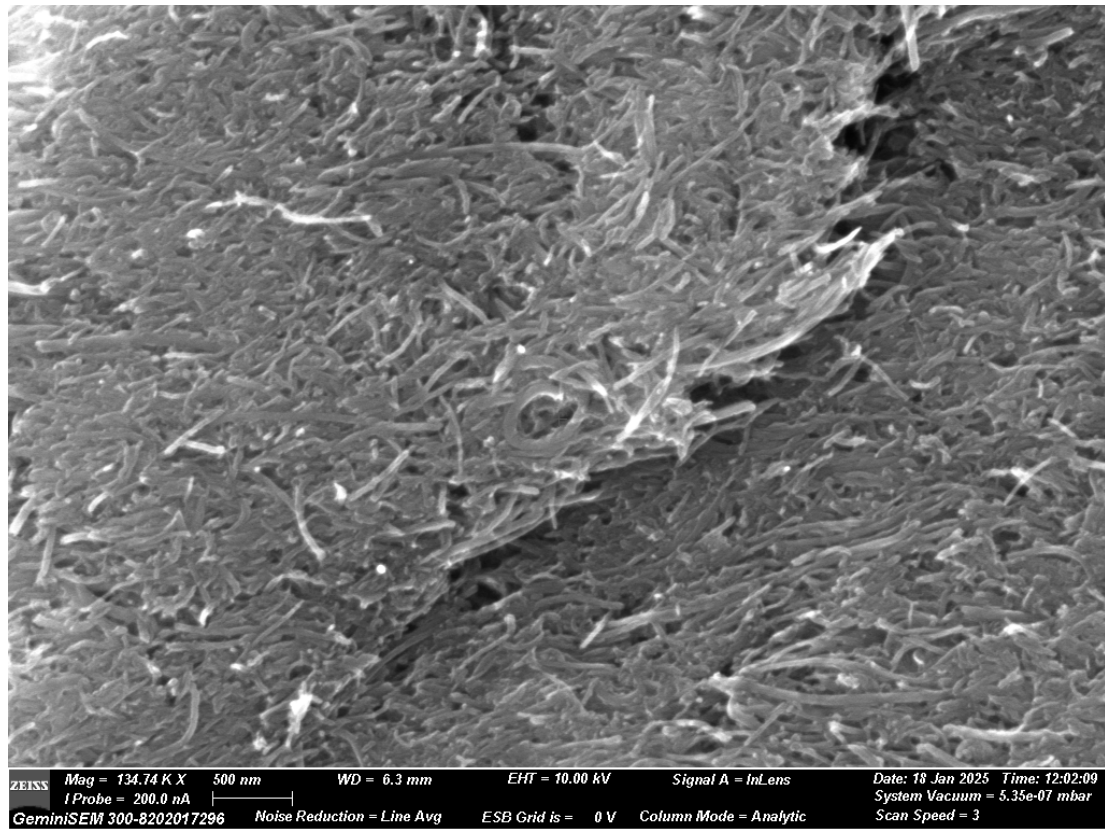


Figure S4. Raw SEM images of MXene/MWCNTs (1:10) .

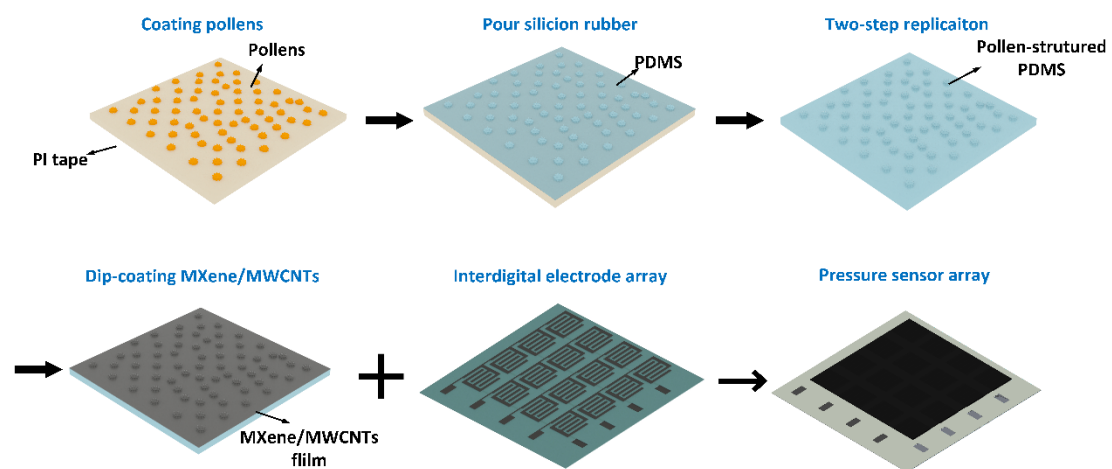


Figure S5. The fabrication process of the flexible pressure sensor array

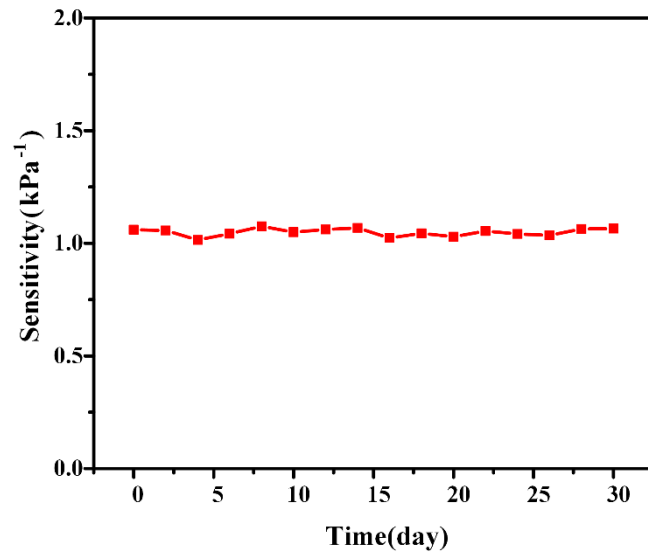


Figure S6. Long-term stability of the encapsulated pressure sensor.

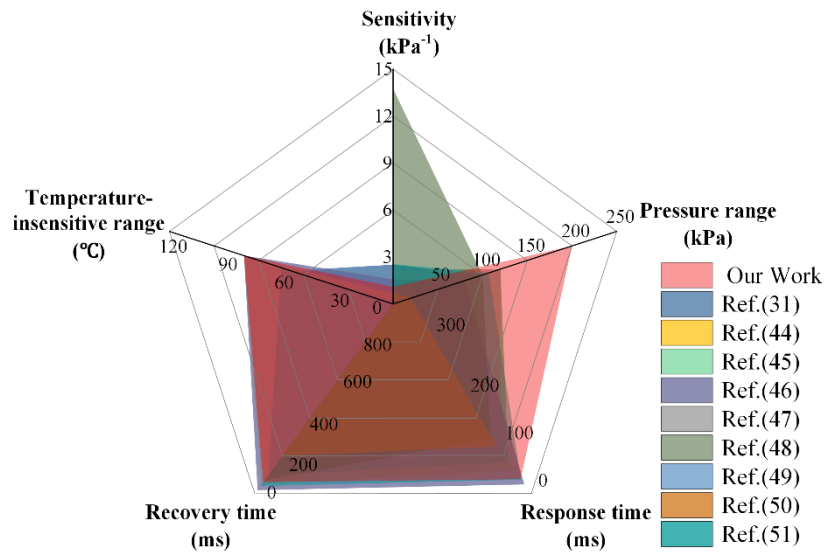


Figure S7. Performance comparison of our sensors with other pressure sensors.

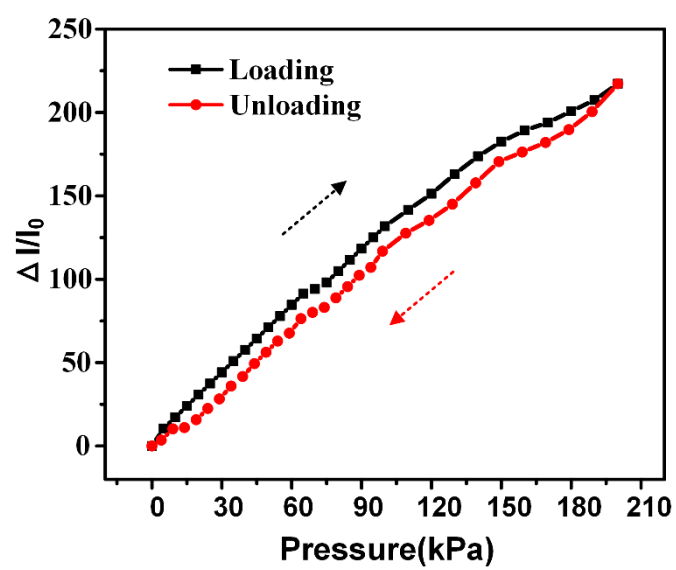


Figure S8. Hysteresis response of the current against pressure