

Supplemental Information

Conformality limits of 2D WS₂ on 3D nanostructures

Jeff J. P. M. Schulpen¹, S. Basuvalingam¹, Marcel A. Verheijen^{1,2}, Ageeth A. Bol^{1,3}

*¹Department of Applied Physics and Science Education, Eindhoven University of Technology,
Eindhoven 5600 MB, the Netherlands*

²Eurofins Materials Science BV, High Tech Campus, Eindhoven 5656 AE, the Netherlands

³Department of Chemistry, University of Michigan, Ann Arbor, MI 48109, USA

Classifications of curvature radius and basal plane conformality per corner (maybe = undeterminable). All TEM data that supports this work can be found here:
<https://doi.org/10.7302/6z5j-fk89>

fin	corner	type	radius	conformal	fin	corner	type	radius	conformal	fin	corner	type	radius	conformal	fin	corner	type	radius	conformal
A1	0	top	1.81	maybe	D1	2	down	5.06	yes	F2	5	down	2.86	no	I1	9	down	2.00	maybe
A1	1	down	2.79	yes	D1	3	up	2.47	yes	F2	6	down	4.13	maybe	I1	10	down	3.44	maybe
A1	2	down	4.17	yes	D1	4	up	2.79	yes	F2	7	up	3.33	maybe	I1	11	up	3.51	yes
A1	3	up	2.70	yes	D1	5	down	2.81	maybe	F2	8	up	3.50	maybe	I1	12	up	2.72	no
A1	4	up	2.36	no	D1	6	down	4.04	yes	F2	9	down	3.78	maybe	I2	-1	top	6.90	maybe
A1	5	down	1.62	maybe	D1	7	up	2.72	yes	F2	10	down	2.56	maybe	I2	0	top	3.73	no
A1	6	down	2.72	maybe	D1	8	up	2.95	yes	F2	11	up	2.32	no	J1	0	top	2.27	no
A1	7	up	2.93	yes	D1	9	down	2.32	maybe	F2	12	up	2.21	maybe	J1	1	down	2.55	no
A1	8	up	1.91	no	D1	10	down	3.51	maybe	G1	0	top	2.64	no	J1	2	down	3.38	maybe
A1	9	down	2.15	yes	D1	11	up	2.49	yes	G1	1	down	4.04	yes	J1	3	up	2.96	maybe
A1	10	down	3.44	yes	D1	12	up	2.63	yes	G1	2	down	3.19	yes	J1	4	up	2.79	yes
A1	11	up	1.85	maybe	D2	-1	top	11.38	yes	G1	3	up	4.27	maybe	J1	5	down	3.15	maybe
A1	12	up	2.95	yes	D2	0	top	9.79	maybe	G1	4	up	2.13	no	J1	6	down	2.87	maybe
A2	-1	top	12.72	yes	D2	1	down	2.60	no	G1	5	down	3.23	maybe	J1	7	up	3.21	maybe
A2	0	top	5.12	maybe	D2	2	down	4.01	maybe	G1	6	down	3.38	maybe	J1	8	up	3.12	yes
B1	0	top	2.08	no	D2	3	up	1.85	no	G1	7	up	3.21	no	J1	9	down	2.23	yes
B1	1	down	2.68	no	D2	4	up	2.82	no	G1	8	up	4.08	yes	J1	10	down	2.49	maybe
B1	2	down	5.04	maybe	D2	5	down	2.46	maybe	G1	9	down	2.81	maybe	J1	11	up	2.78	no
B1	3	up	1.81	yes	D2	6	down	2.75	maybe	G1	10	down	3.10	yes	J1	12	up	2.63	yes
B1	4	up	2.53	maybe	D2	7	up	3.07	yes	G1	11	up	3.66	yes	K1	0	top	4.40	yes
B1	5	down	1.62	yes	D2	8	up	2.63	no	G1	12	up	4.36	yes	K1	1	down	2.64	no
B1	6	down	3.59	maybe	D2	9	down	2.25	maybe	G2	-1	top	6.27	maybe	K1	2	down	2.59	maybe
B1	7	up	2.06	no	D2	10	down	3.07	maybe	G2	0	top	5.05	maybe	K1	3	up	2.46	maybe
B1	8	up	2.36	yes	D2	11	up	2.46	maybe	G2	1	down	3.38	maybe	K1	4	up	2.63	yes
B1	9	down	2.06	maybe	D2	12	up	2.39	maybe	G2	2	down	4.27	maybe	K1	5	down	2.89	maybe
B1	10	down	3.51	yes	E1	0	top	3.57	yes	G2	3	up	4.06	yes	K1	6	down	3.12	maybe
B1	11	up	2.93	yes	E1	1	down	2.95	yes	G2	4	up	3.90	yes	K1	7	up	3.12	no
B1	12	up	2.61	yes	E1	2	down	3.64	no	G2	5	down	3.00	maybe	K1	8	up	4.08	yes
B2	-1	top	12.09	yes	E1	3	up	2.55	no	G2	6	down	3.66	maybe	K1	9	down	2.04	maybe
B2	0	top	4.72	maybe	E1	4	up	2.32	no	G2	7	up	3.66	no	K1	10	down	2.32	yes
B2	1	down	5.59	maybe	E1	5	down	3.06	maybe	G2	8	up	3.19	no	K1	11	up	3.21	no
B2	2	down	5.89	maybe	E1	6	down	3.17	maybe	G2	9	down	2.63	maybe	K1	12	up	2.42	no
B2	3	up	5.77	yes	E1	7	up	2.72	no	G2	10	down	3.10	maybe	L1	0	top	3.76	yes
B2	4	up	5.09	maybe	E1	8	up	2.57	no	G2	11	up	3.64	no	L1	1	down	2.76	maybe
B2	5	up	4.44	maybe	E1	9	down	3.27	yes	G2	12	up	4.69	yes	L1	2	down	4.66	yes
B2	6	down	4.04	maybe	E1	10	down	3.76	maybe	H1	0	top	4.53	yes	L1	3	up	2.30	yes
B2	7	up	4.06	yes	E1	11	up	2.66	no	H1	1	down	2.91	maybe	L1	4	up	2.25	no
B2	8	up	4.76	no	E1	12	up	2.64	yes	H1	2	down	2.32	no	L1	5	down	2.85	maybe
B2	9	down	3.75	maybe	E2	-1	top	3.52	no	H1	3	up	3.76	yes	L1	6	down	3.83	maybe
B2	10	down	4.65	maybe	E2	0	top	8.10	yes	H1	4	up	3.49	no	L1	7	up	2.23	maybe
B2	11	up	5.14	yes	E2	1	down	3.05	maybe	H1	5	down	3.74	yes	L1	8	up	2.49	no
B2	12	up	2.93	no	E2	2	down	4.01	maybe	H1	6	down	2.81	maybe	L1	9	down	2.15	yes
C1	0	top	2.93	yes	E2	3	up	3.99	maybe	H1	7	up	2.89	no	L1	10	down	2.79	maybe
C1	1	down	3.10	yes	E2	4	up	3.85	yes	H1	8	up	2.98	yes	L1	11	up	2.12	no
C1	2	down	4.85	yes	E2	5	down	2.32	maybe	H1	9	down	3.06	no	L1	12	up	2.98	no
C1	3	up	2.61	yes	E2	6	down	3.21	maybe	H1	10	down	3.19	no	M1	0	top	4.15	yes
C1	4	up	2.36	no	E2	7	up	2.44	yes	H1	11	up	2.70	yes	M1	1	down	2.55	yes
C1	5	down	2.08	maybe	E2	8	up	3.10	no	H1	12	up	2.91	maybe	M1	2	down	3.27	maybe
C1	6	down	3.91	yes	E2	9	down	2.93	maybe	H2	-1	top	7.06	yes	M1	3	up	1.81	no
C1	7	up	2.51	yes	E2	10	down	3.36	yes	H2	0	top	5.94	maybe	M1	4	up	3.06	no
C1	8	up	2.85	yes	E2	11	up	1.81	no	H2	1	down	4.41	maybe	M1	5	down	2.89	maybe
C1	9	down	2.63	no	E2	12	up	2.18	no	H2	2	down	4.22	maybe	M1	6	down	2.53	maybe
C1	10	down	2.55	maybe	F1	0	top	2.66	maybe	H2	3	up	3.03	no	M1	7	up	3.74	maybe
C1	11	up	2.51	yes	F1	1	down	3.78	no	H2	4	up	5.42	yes	M1	8	up	2.38	maybe
C1	12	up	2.44	no	F1	2	down	3.78	maybe	H2	5	down	4.32	maybe	M1	9	down	2.34	no
C2	-1	top	11.01	yes	F1	3	up	3.57	maybe	H2	6	down	4.69	maybe	M1	10	down	3.27	maybe
C2	0	top	8.59	yes	F1	4	up	5.59	yes	H2	7	up	3.54	no	M1	11	up	2.81	yes
C2	1	down	3.68	maybe	F1	5	down	3.30	maybe	H2	8	up	3.68	maybe	M1	12	up	2.63	no
C2	2	down	5.07	maybe	F1	6	down	4.40	yes	H2	9	down	3.38	maybe	N1	0	top	3.06	yes
C2	3	up	3.87	yes	F1	7	up	4.82	maybe	H2	10	down	3.87	no	N1	1	down	2.76	maybe
C2	4	up	4.95	maybe	F1	8	up	2.70	yes	H2	11	up	3.71	maybe	N1	2	down	2.89	maybe
C2	5	down	3.36	no	F1	9	down	2.61	maybe	H2	12	up	5.61	maybe	N1	3	up	2.32	maybe
C2	6	down	4.36	maybe	F1	10	down	3.34	maybe	I1	0	top	4.87	yes	N1	4	up	2.06	no
C2	7	up	4.39	yes	F1	11	up	4.59	yes	I1	1	down	2.49	maybe	N1	5	down	2.21	maybe
C2	8	up	4.15	maybe	F1	12	up	3.21	no	I1	2	down	5.78	yes	N1	6	down	2.98	maybe
C2	9	down	4.18	maybe	F2	-1	top	4.08	no	I1	3	up	3.42	yes	N1	7	up	2.55	maybe
C2	10	down	4.18	maybe	F2	0	top	10.82	yes	I1	4	up	2.57	maybe	N1	8	up	5.02	yes
C2	11	up	4.15	maybe	F2	1	down	3.78	maybe	I1	5	down	1.96	maybe	N1	9	down	2.38	maybe
C2	12	up	2.09	no	F2	2	down	3.52	maybe	I1	6	down	2.93	yes	N1	10	down	2.96	maybe
D1	0	top	2.91	yes	F2	3	up	2.60	yes	I1	7	up	2.36	no	N1	11	up	3.13	maybe
D1	1	down	3.15	no	F2	4	up	3.21	maybe	I1	8	up	2.23	yes	N1	12	up	2.70	no

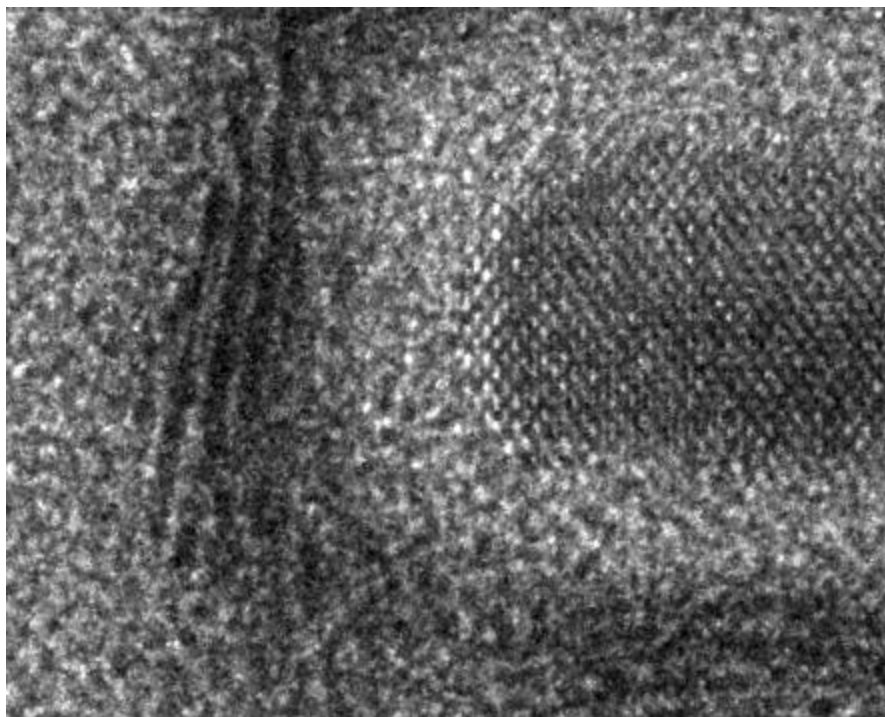


Figure: TEM image of an edge that was classified ‘undeterminable’.