

Figure S1. Changes in body weight of experimental mice at the end of experimental periods (n=3). \$\$ $p < 0.01$ and \$\$\$ $p < 0.001$ compared to control (Ctrl).

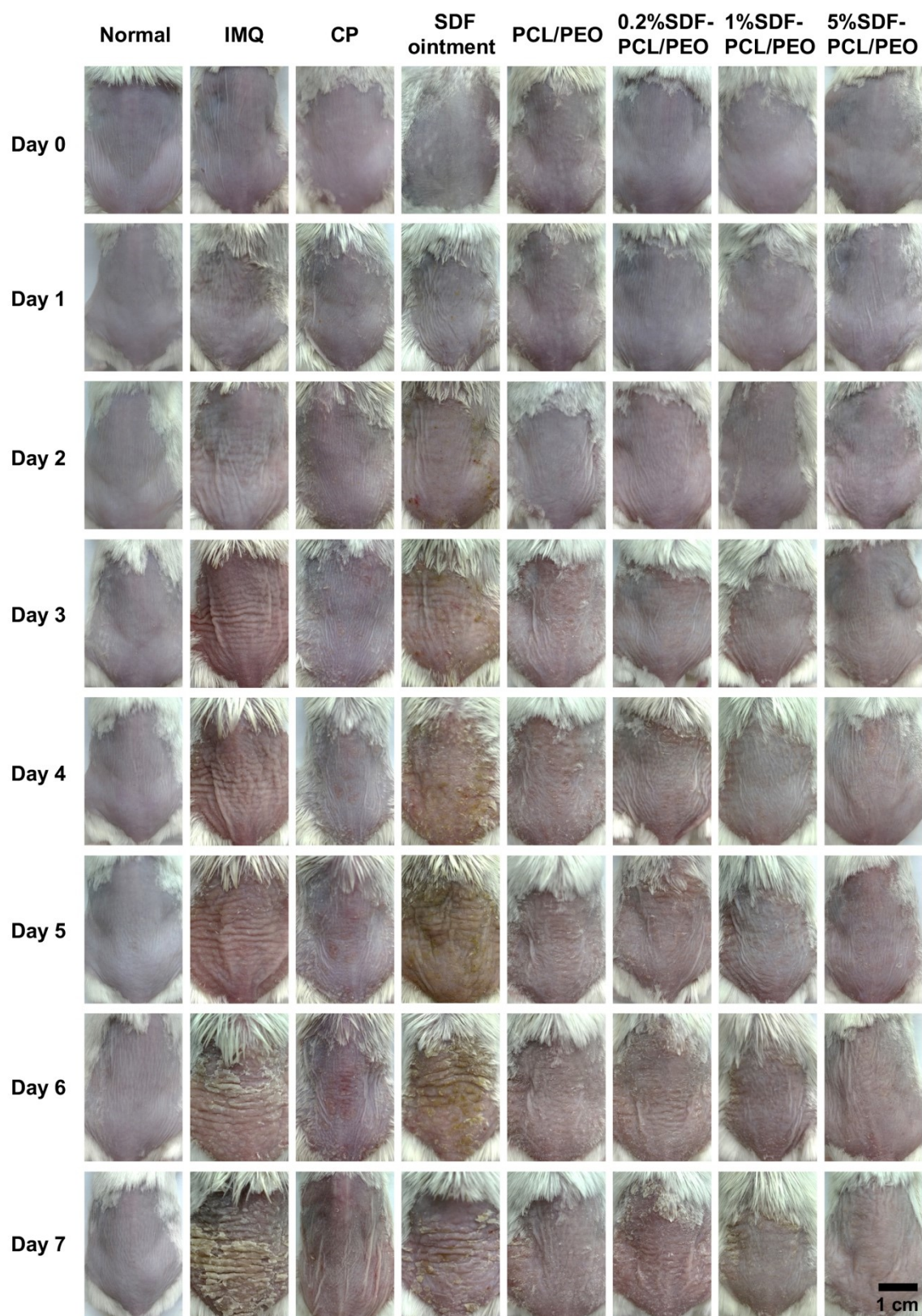


Figure S2. The macroscopic appearance of dorsal shaved skin of mice treated with indicated formulations from day 1 to day 7. Scale bar: 1 cm.

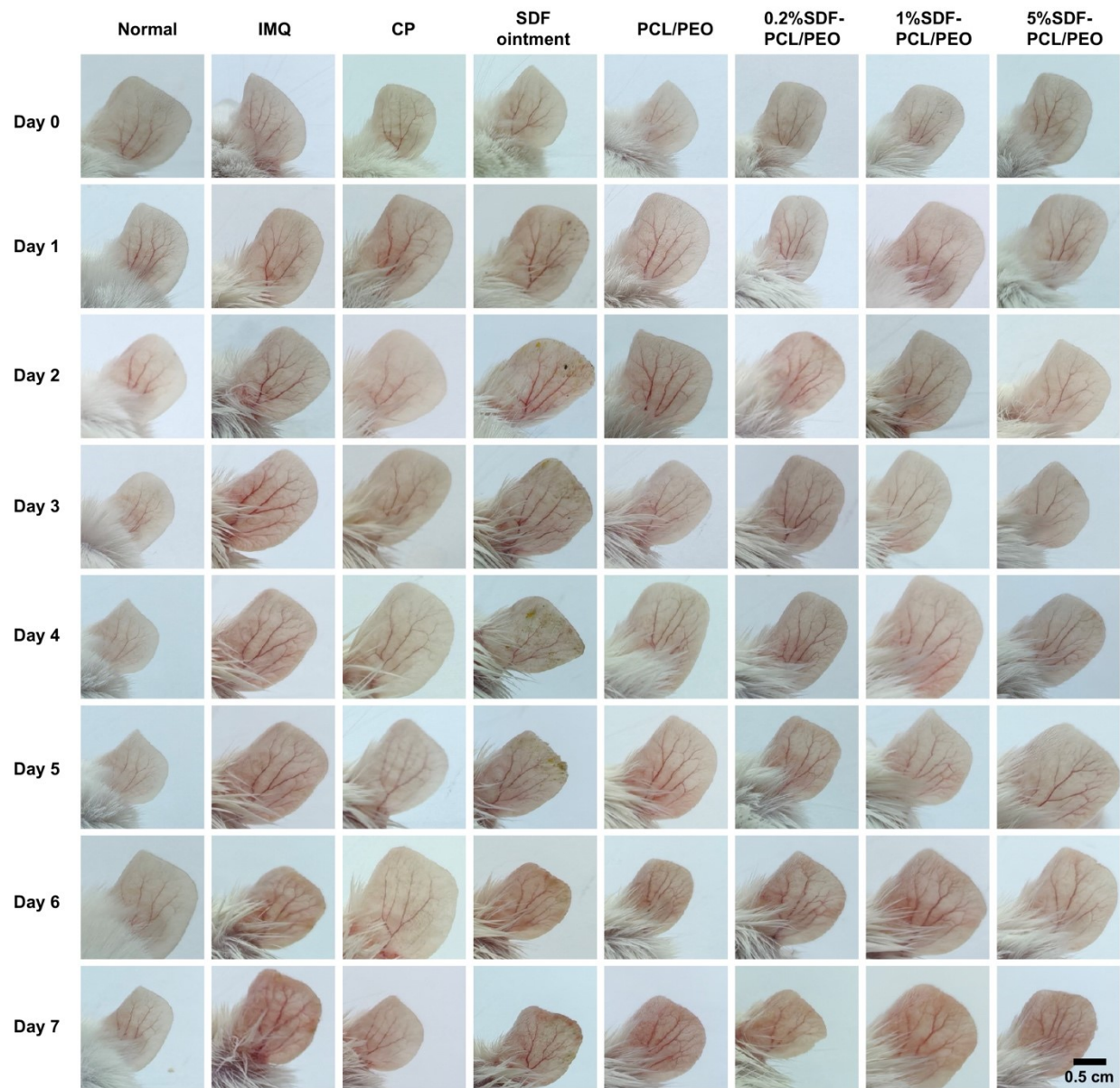


Figure S3. The macroscopic appearance of the right ear of mice treated with the indicated formulations from day 1 to day 7. Scale bar: 0.5 cm.

Table S1. The wavenumber of characteristic peaks for different samples

Samples	Wavenumber (cm ⁻¹)	Functional group
Indirubin	1360	C-H
Gallic acid	1541	C=C
	850	Ar-C
Berberine chloride	1635	C=N ⁺
PCL/PEO	2940, 2863	O-H
	1726	C=O
	1103	C-O-C
SDF-PCL/PEO	2940, 2863	O-H
	1726	C=O
	1103	C-O-C
	1635	C=N ⁺
	1541	C=C
	872	Ar-C
	1360	C-H