

Supplementary Figures

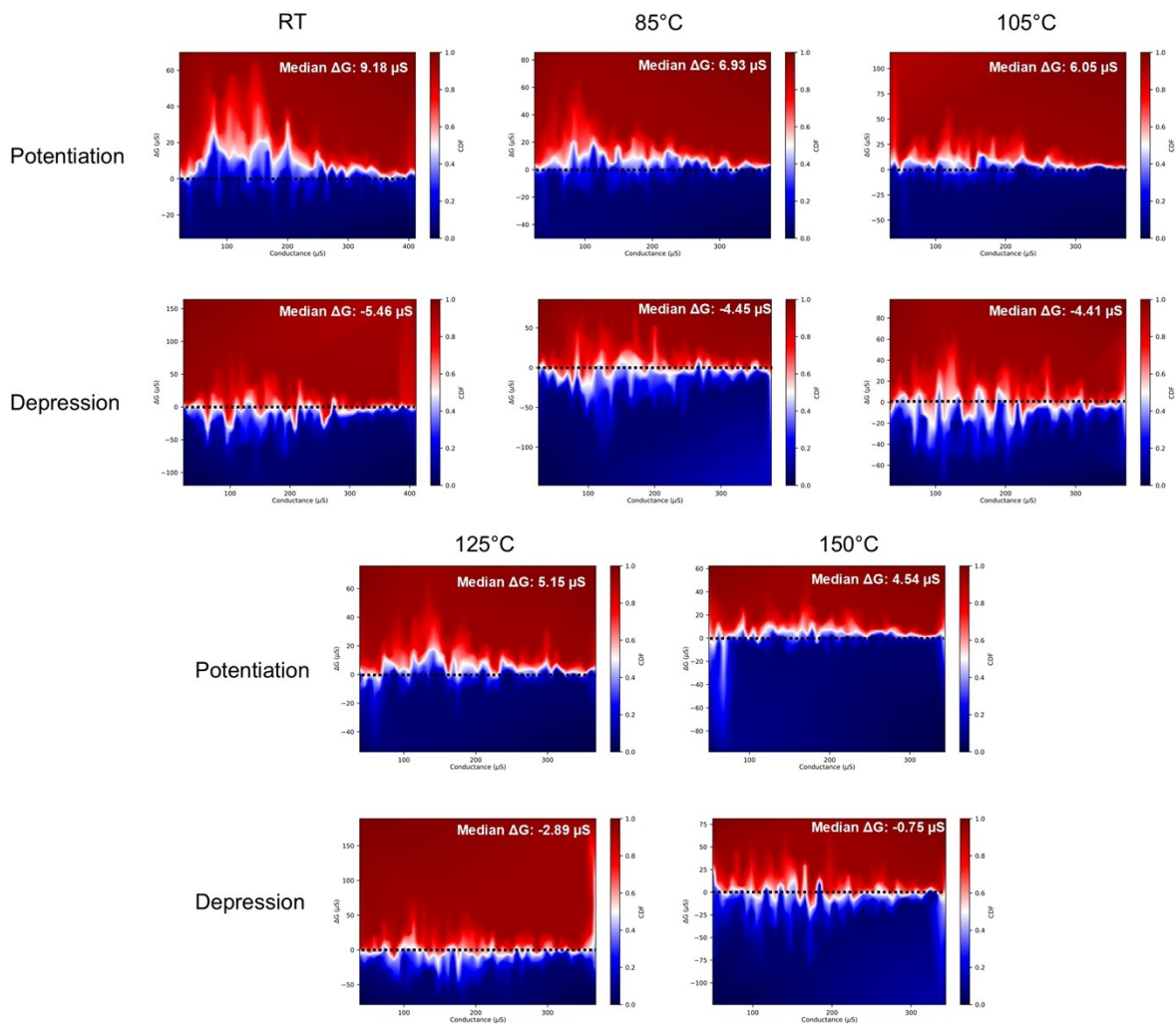


Fig. S1 Raw ΔG - G distributions for potentiation and depression from RT to 150 °C, showing progressive conductance dynamic range compression at elevated temperatures.

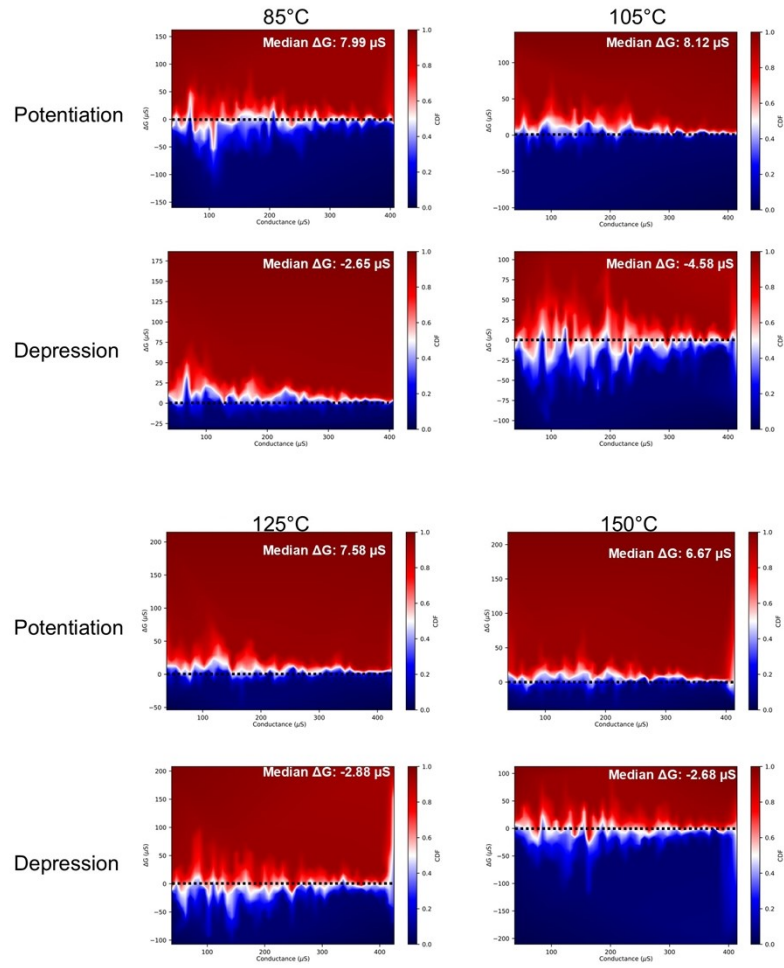


Fig. S2 Compensated ΔG -G distributions after applying the proposed temperature-aware scheme, demonstrating restoration of the effective conductance dynamic range.

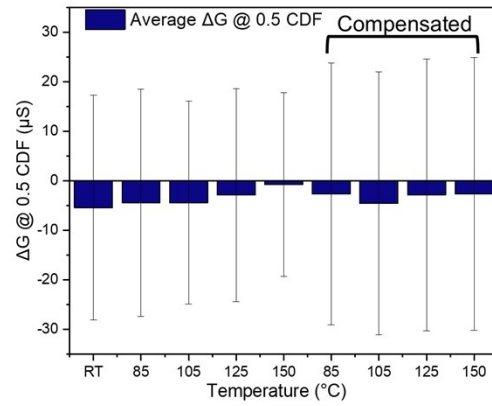
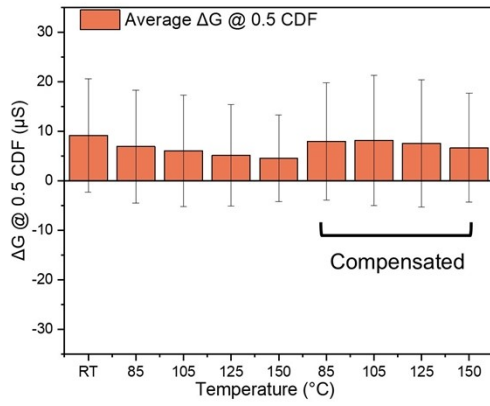


Fig. S3 Average ΔG at 0.5 CDF and corresponding standard deviation versus temperature, highlighting reduced update magnitude and increased relative variability under dynamic range compression.