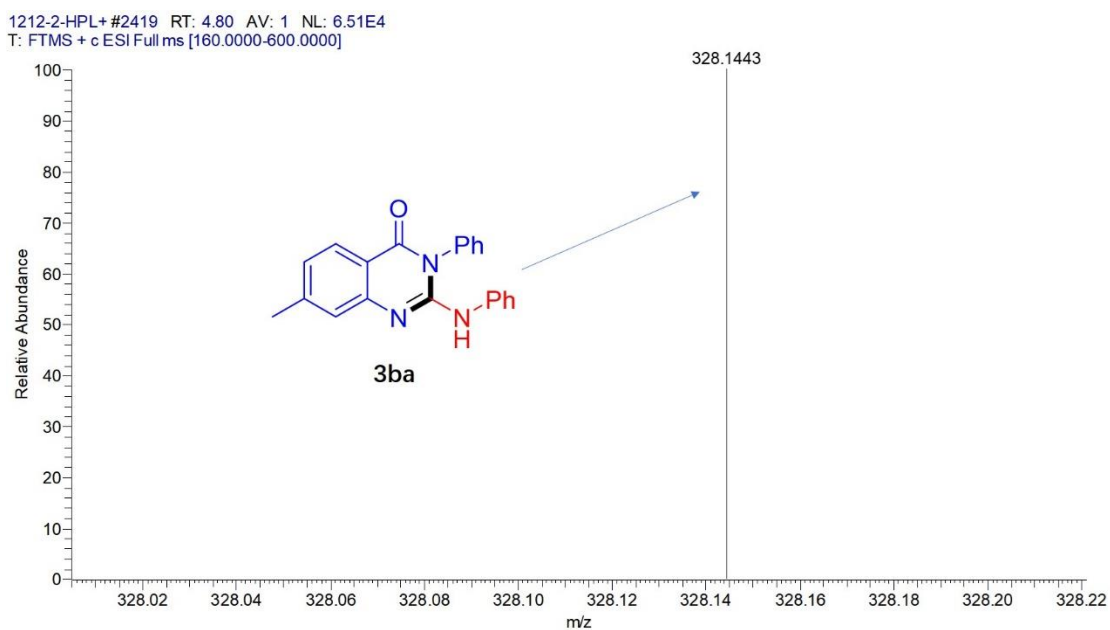
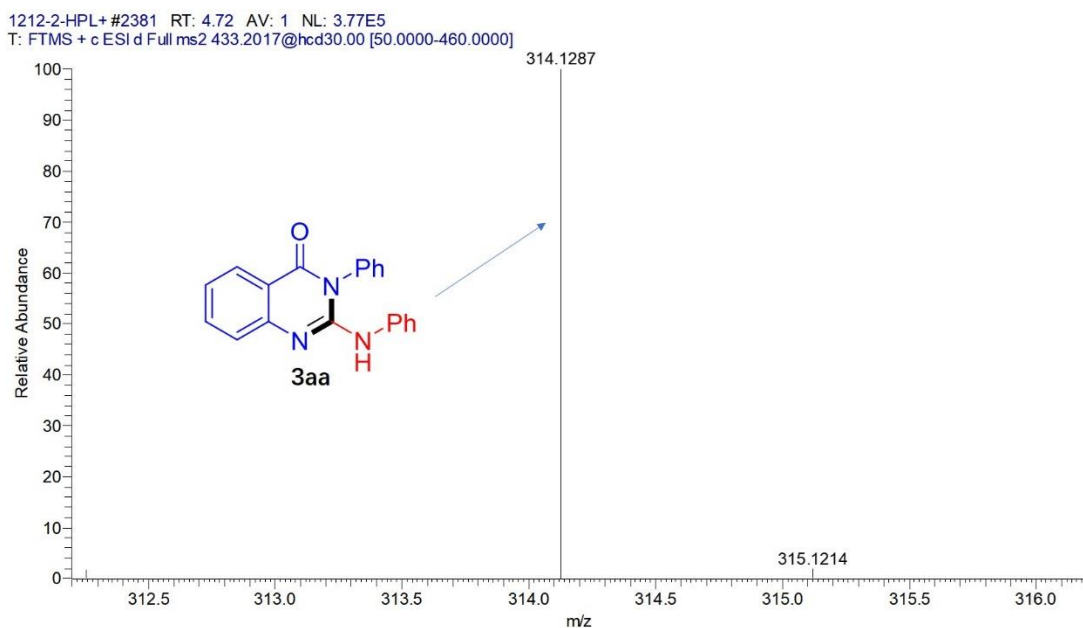
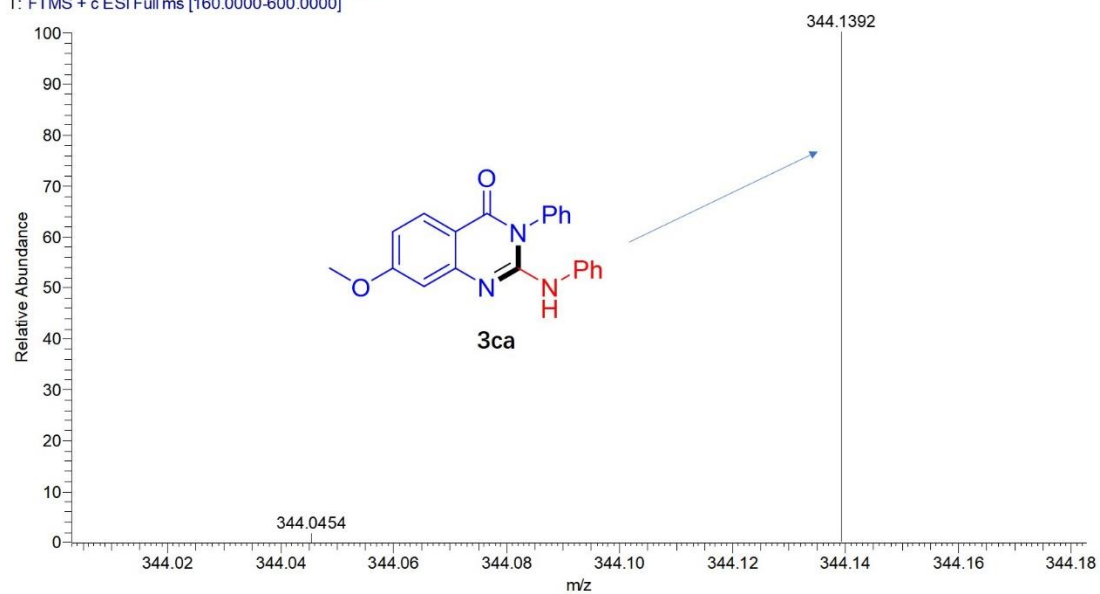


The SI for *Org. Biomol. Chem.*, 2025, **23**, 4860–4865, DOI: 10.1039/ D5OB00410A, originally published on 21st April 2025, was updated on 27th May 2025. This version corrects an error in the structure of compound **3qa**.

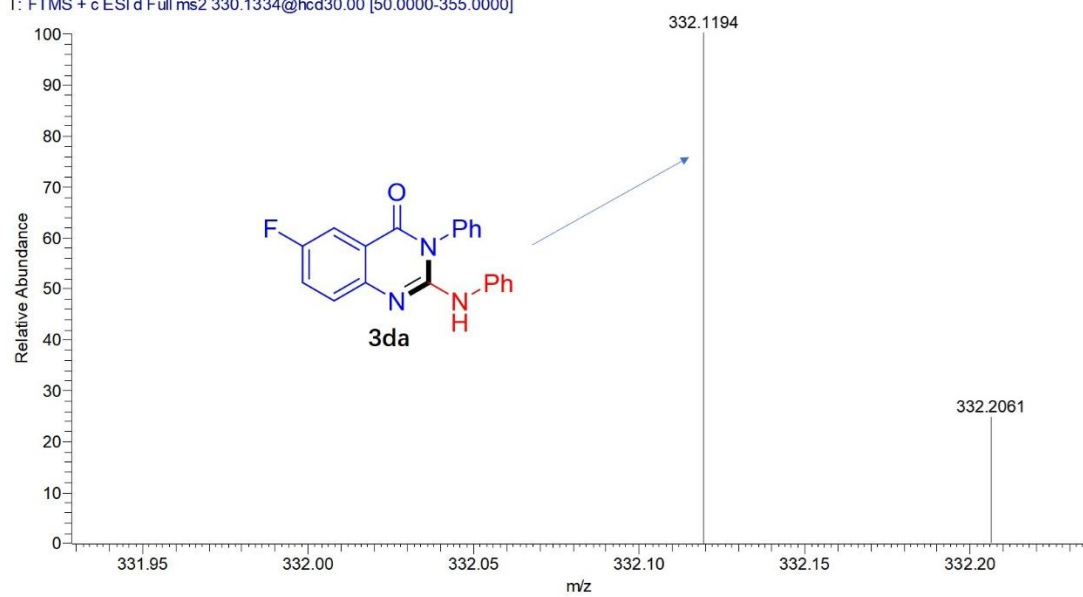
Product mass spectrometry information



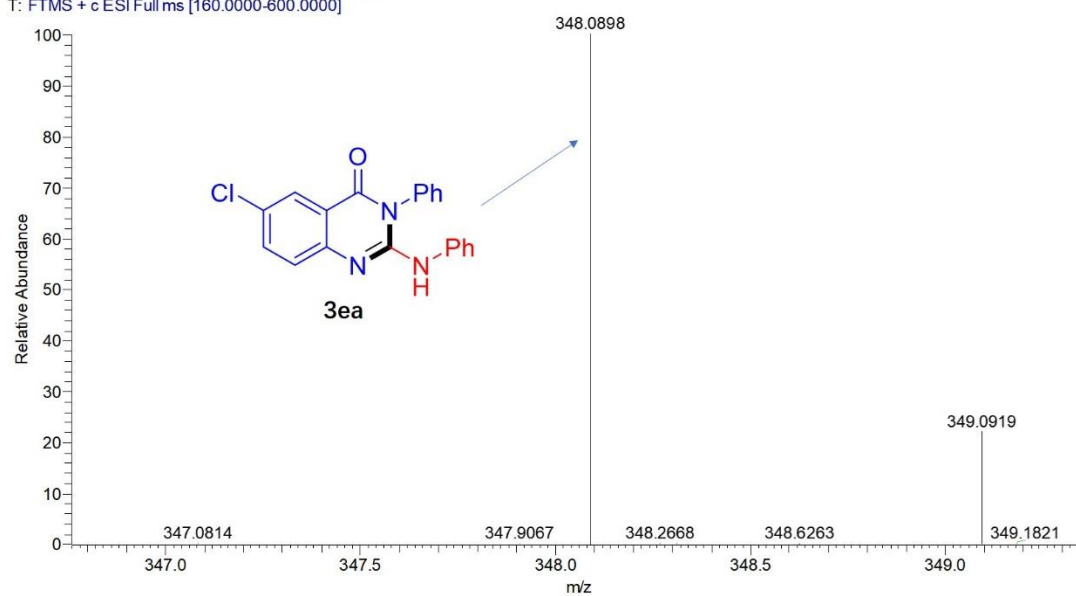
1212-2-HPL+ #2419 RT: 4.80 AV: 1 NL: 2.87E6
T: FTMS + c ESI Full ms [160.0000-600.0000]



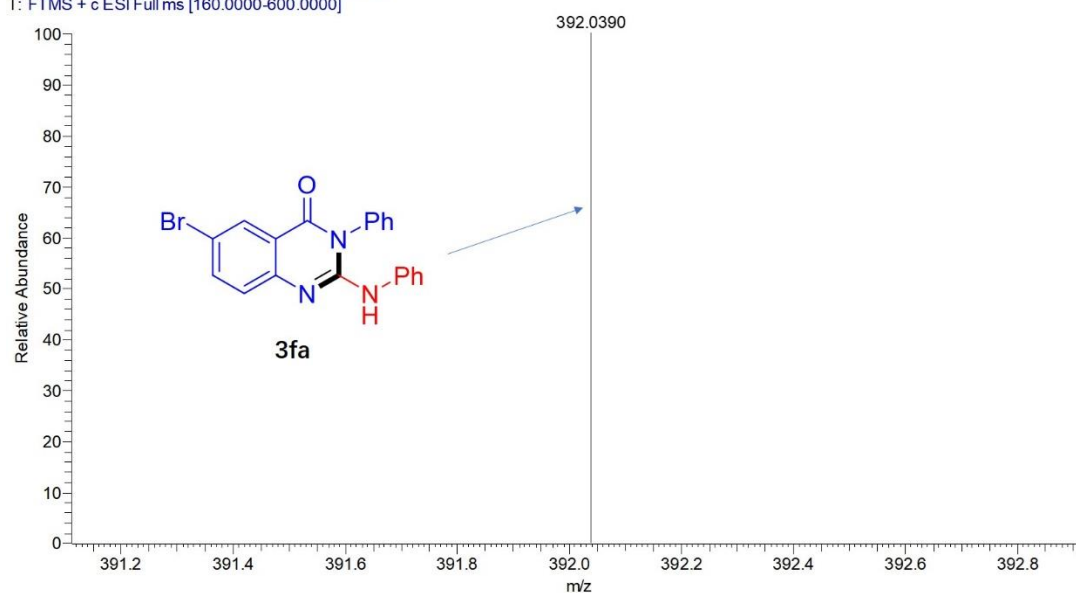
1212-2-HPL+ #2344 RT: 4.65 AV: 1 NL: 4.74E4
T: FTMS + c ESI d Full ms2 330.1334@hcd30.00 [50.0000-355.0000]



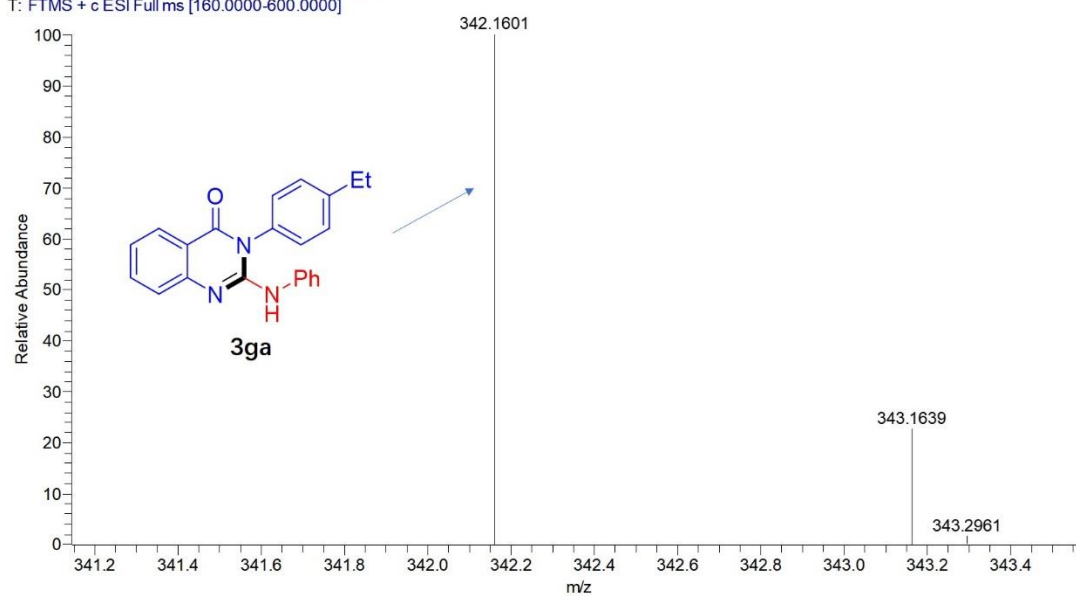
1212-2-HPL+ #2815 RT: 5.57 AV: 1 NL: 5.32E8
T: FTMS + c ESI Full ms [160.0000-600.0000]



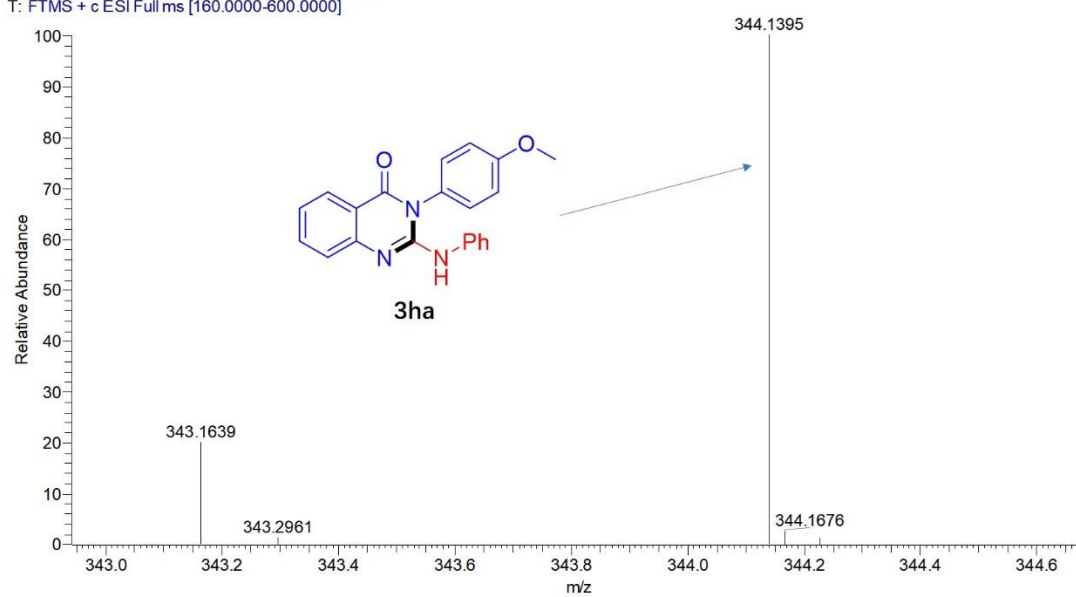
1212-2-HPL+ #2815 RT: 5.57 AV: 1 NL: 8.54E6
T: FTMS + c ESI Full ms [160.0000-600.0000]



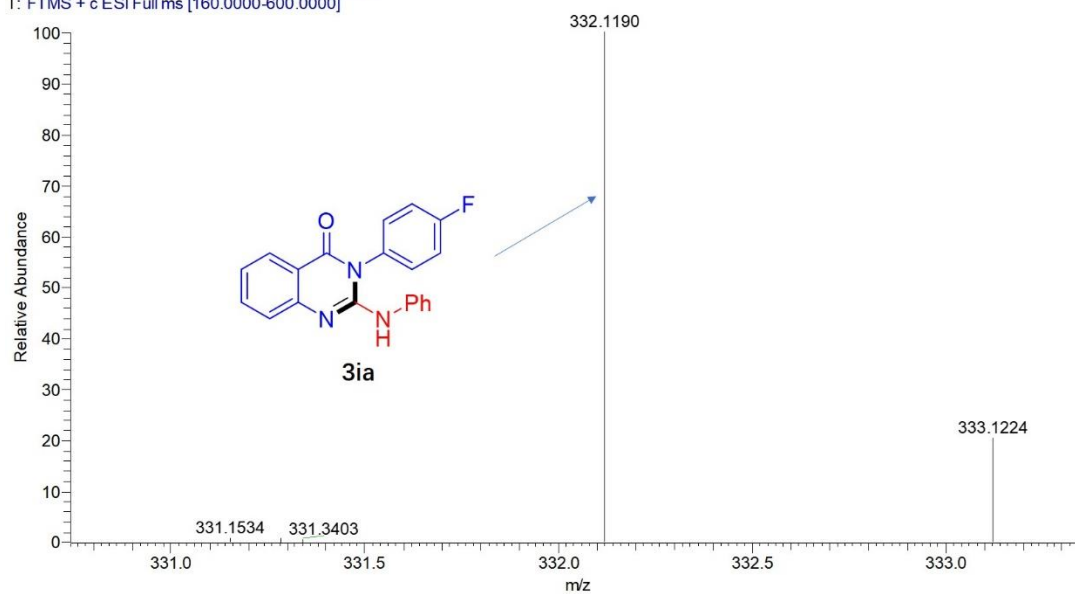
1212-2-HPL+ #2815 RT: 5.57 AV: 1 NL: 1.81E7
T: FTMS + c ESI Full ms [160.0000-600.0000]



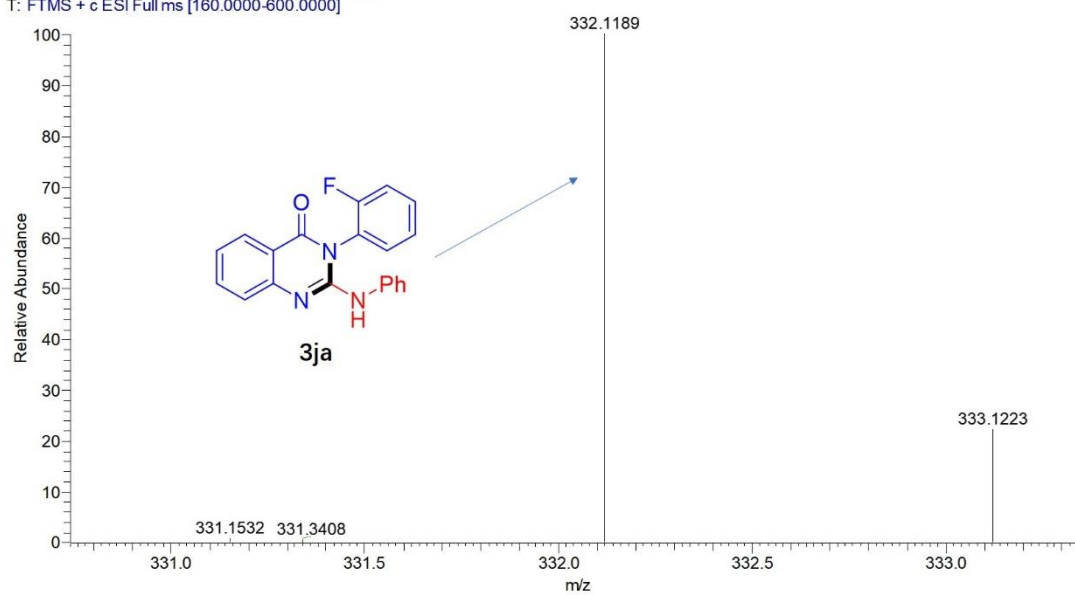
1212-2-HPL+ #2815 RT: 5.57 AV: 1 NL: 2.06E7
T: FTMS + c ESI Full ms [160.0000-600.0000]



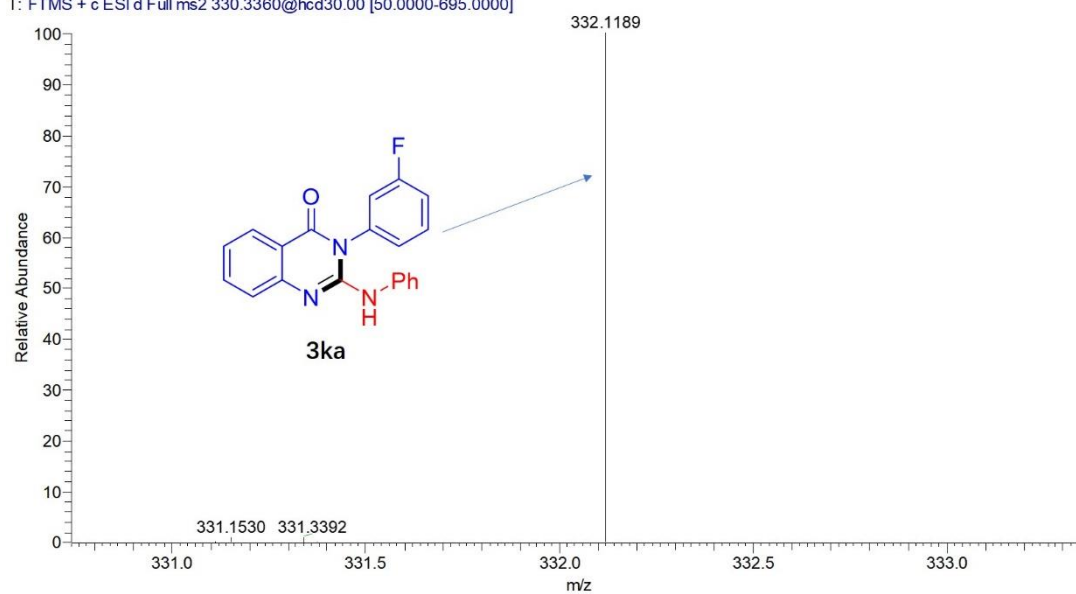
1212-2-HPL+ #2779 RT: 5.50 AV: 1 NL: 5.62E7
T: FTMS + c ESI Full ms [160.0000-600.0000]



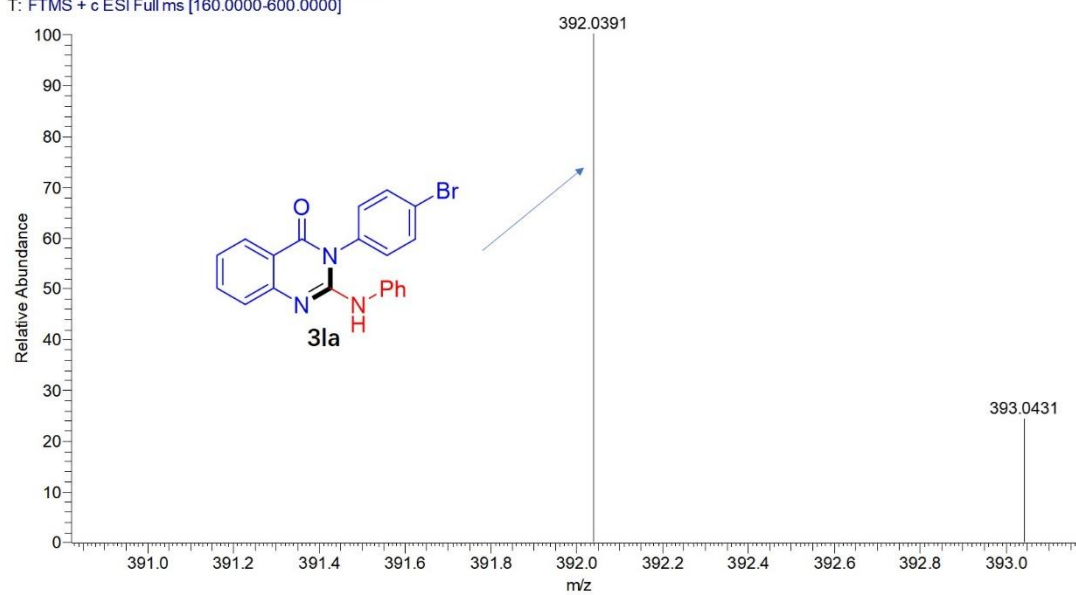
1212-2-HPL+ #2773 RT: 5.49 AV: 1 NL: 6.50E7
T: FTMS + c ESI Full ms [160.0000-600.0000]



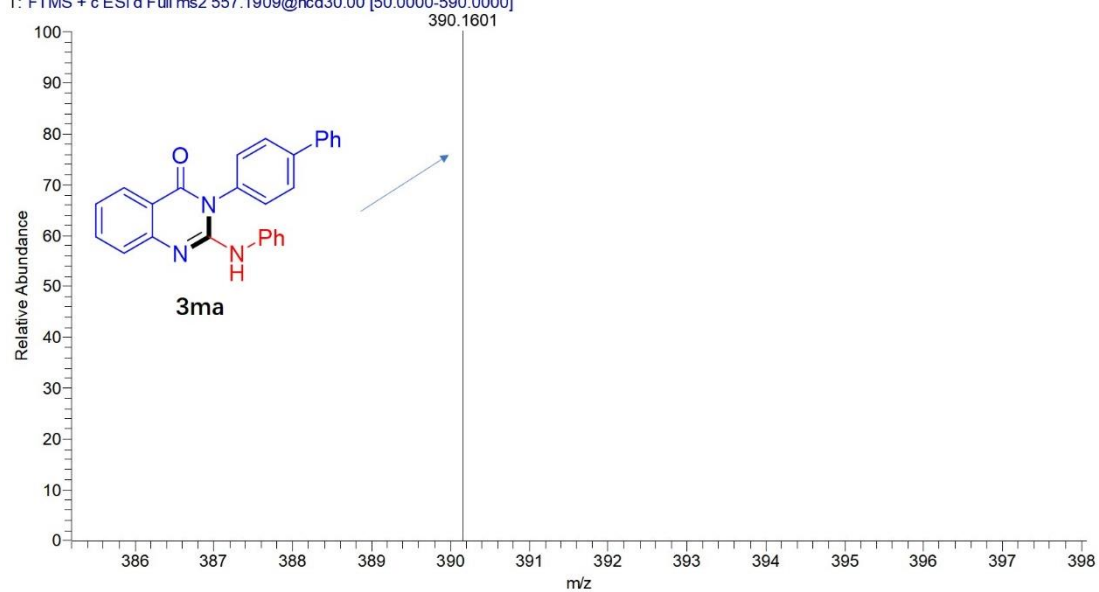
1212-2-HPL+ #2766 RT: 5.47 AV: 1 NL: 1.13E8
T: FTMS + c ESI d Full ms2 330.3360@hcd30.00 [50.0000-695.0000]



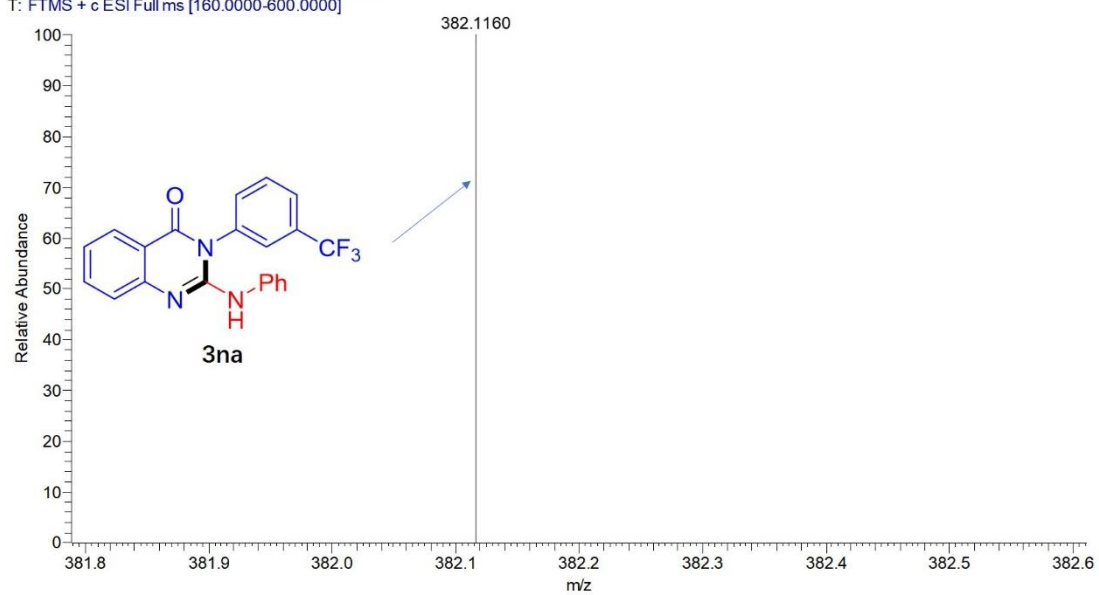
1212-2-HPL+ #2833 RT: 5.61 AV: 1 NL: 5.15E6
T: FTMS + c ESI Full ms [160.0000-600.0000]



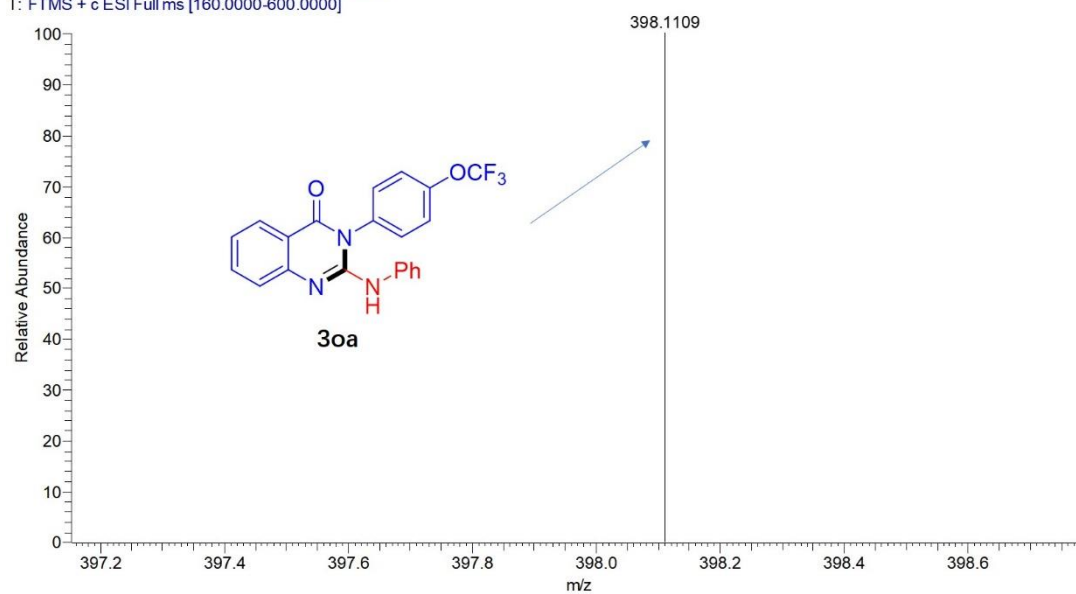
1212-2-HPL+ #2544 RT: 5.04 AV: 1 NL: 2.21E4
T: FTMS + c ESI d Full ms2 557.1909@hcd30.00 [50.0000-590.0000]



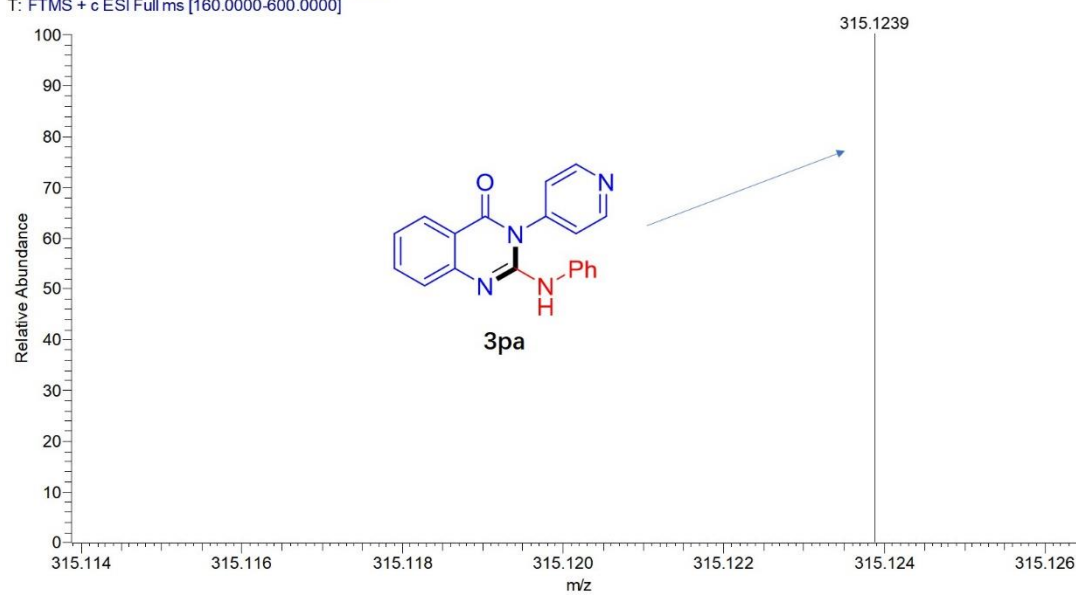
1212-2-HPL+ #2737 RT: 5.42 AV: 1 NL: 2.10E7
T: FTMS + c ESI Full ms [160.0000-600.0000]



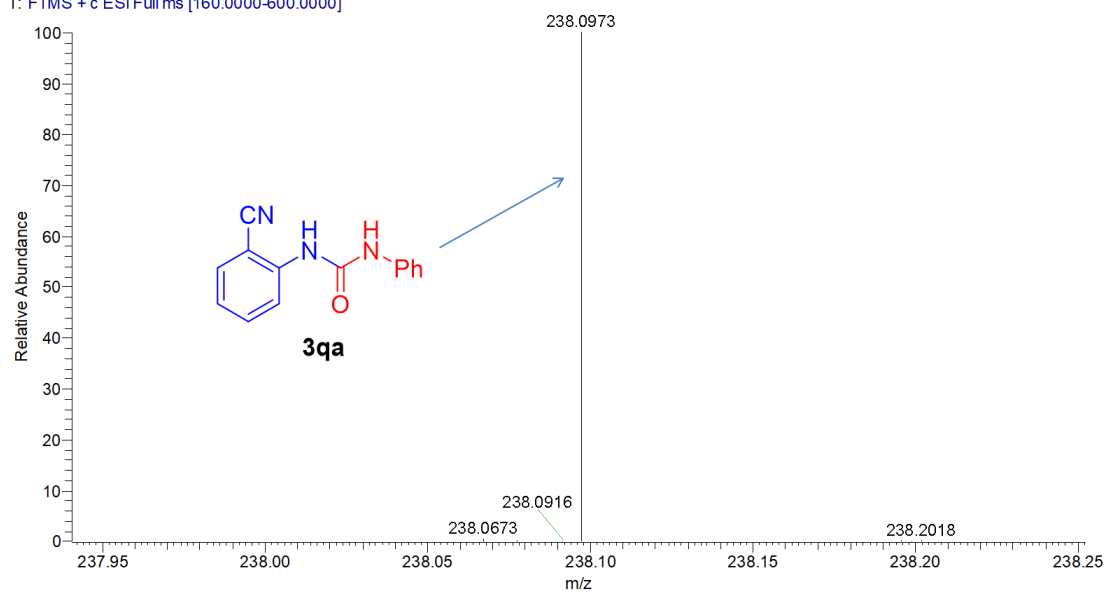
1212-2-HPL+ #2743 RT: 5.43 AV: 1 NL: 6.08E5
T: FTMS + c ESI Full ms [160.0000-600.0000]



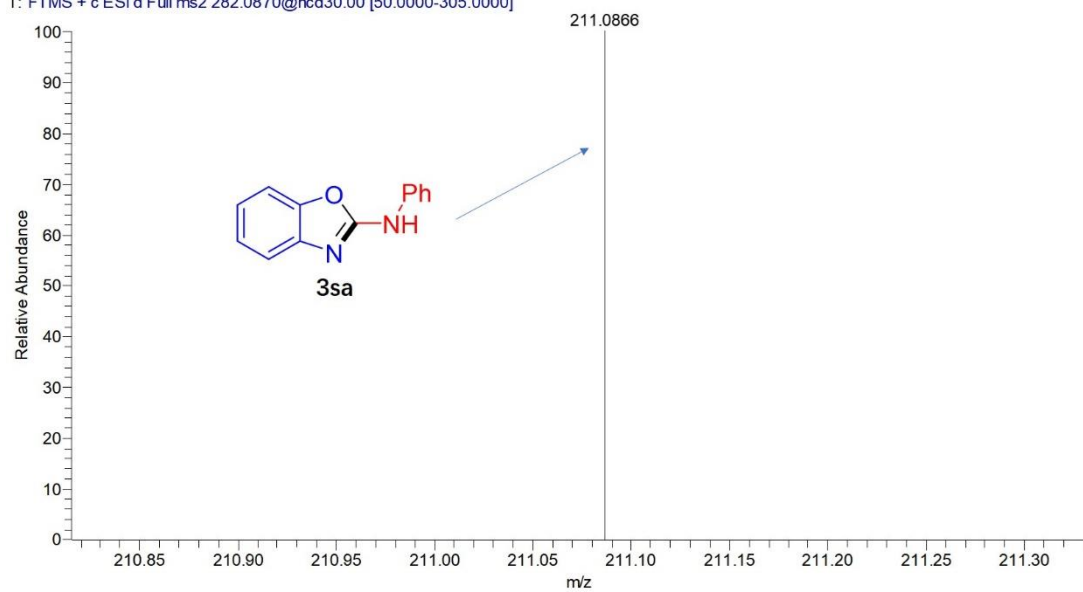
1212-2-HPL+ #2743 RT: 5.43 AV: 1 NL: 8.02E5
T: FTMS + c ESI Full ms [160.0000-600.0000]



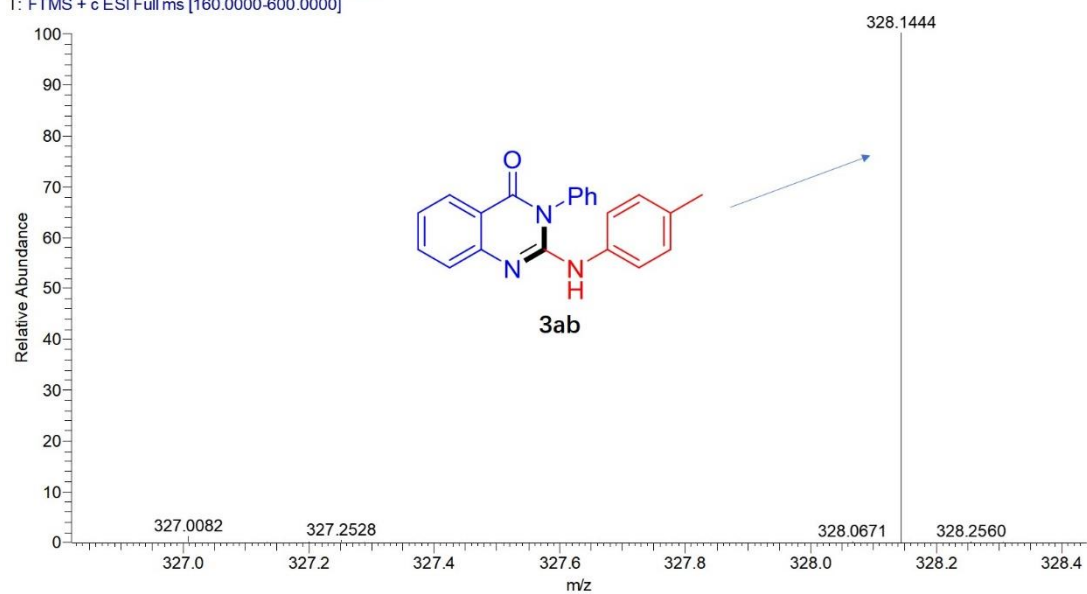
1212-2-HPL+ #2522-2857 RT: 5.01-5.65 AV: 56 NL: 1.50E7
T: FTMS + c ESI Full ms [160.0000-600.0000]



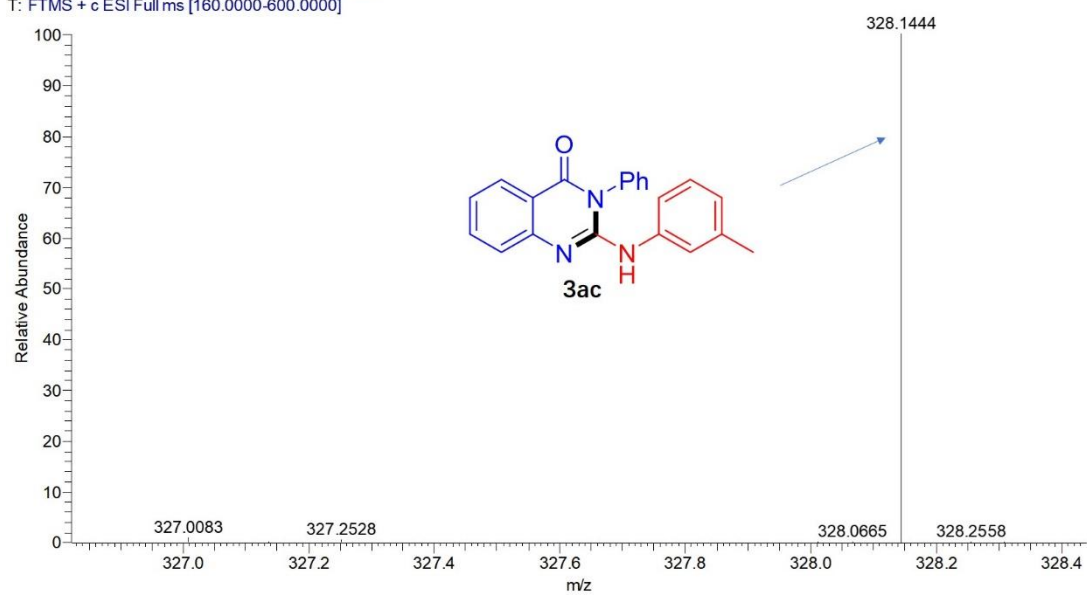
1212-2-HPL+ #2697 RT: 5.34 AV: 1 NL: 8.61E3
T: FTMS + c ESI d Full ms2 282.0870@hcd30.00 [50.0000-305.0000]



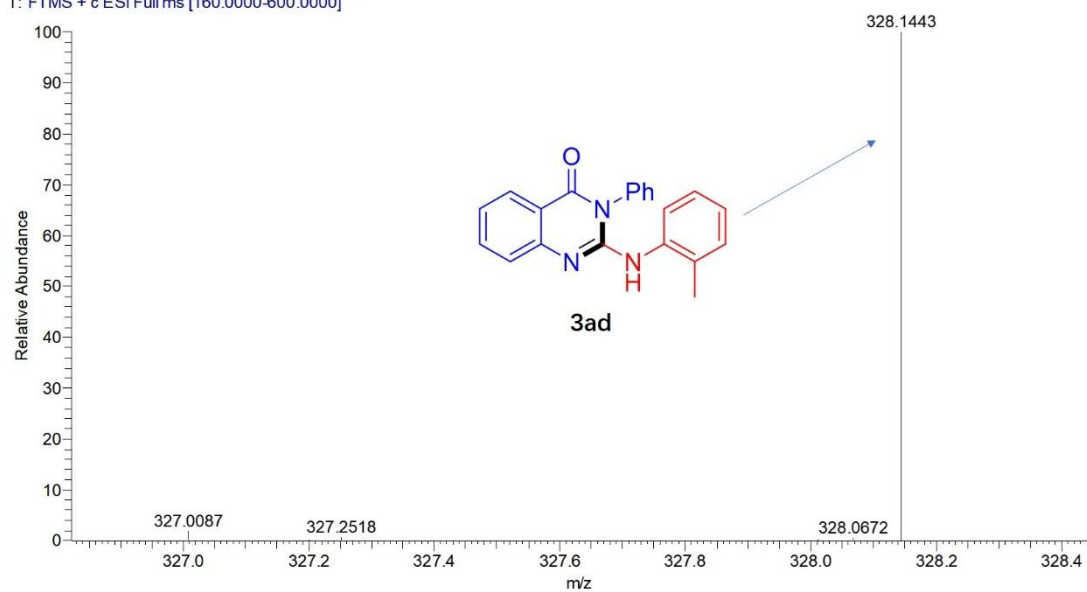
1212-2-HPL+ #3061 RT: 6.05 AV: 1 NL: 3.15E7
T: FTMS + c ESI Full ms [160.0000-600.0000]



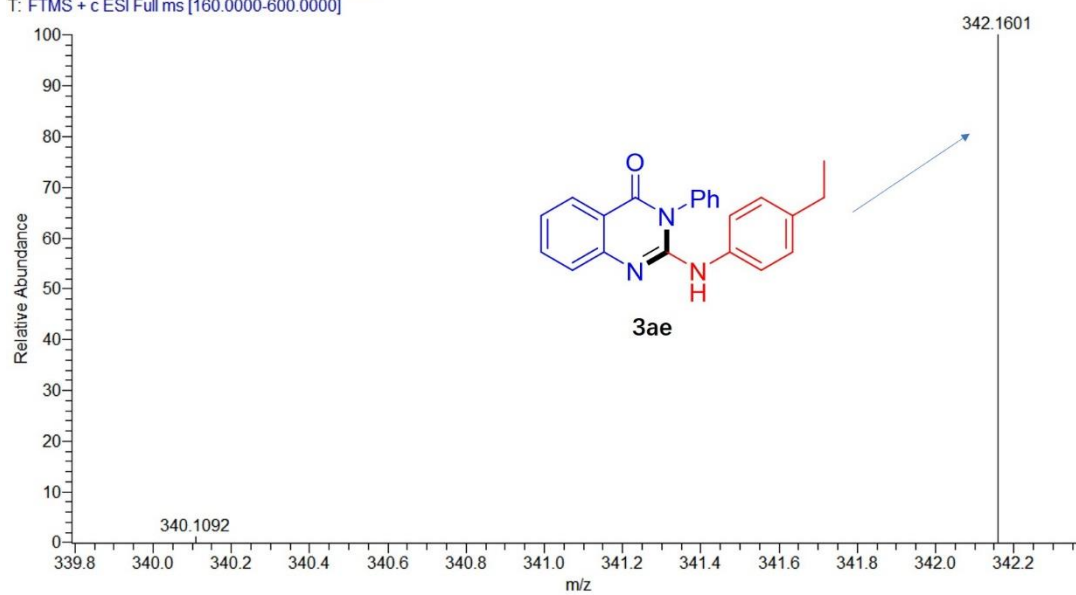
1212-2-HPL+ #3067 RT: 6.07 AV: 1 NL: 2.83E7
T: FTMS + c ESI Full ms [160.0000-600.0000]



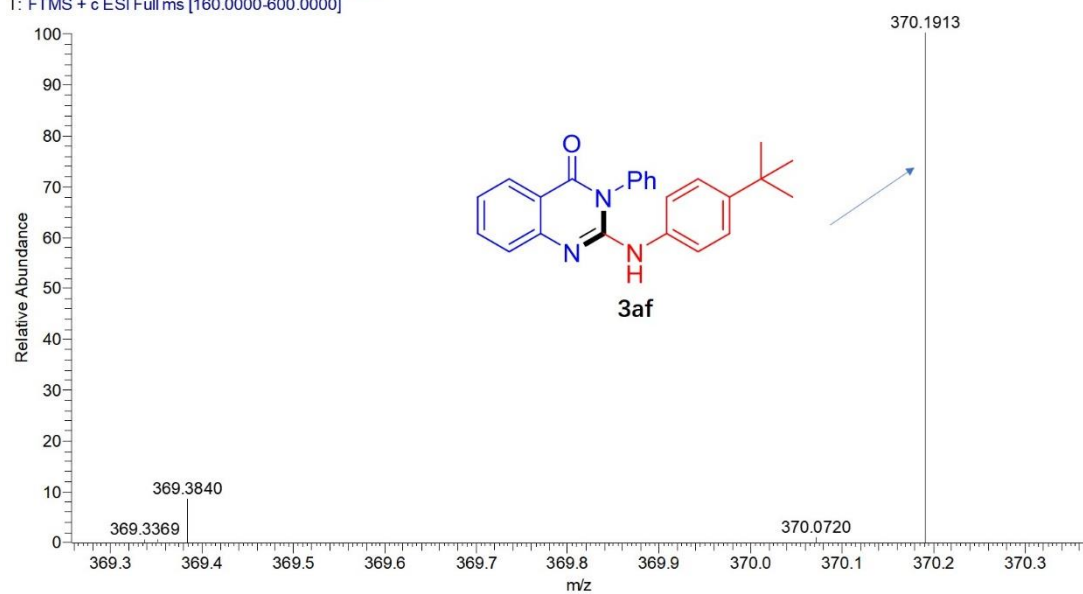
1212-2-HPL+ #3085 RT: 6.10 AV: 1 NL: 2.14E7
T: FTMS + c ESI Full ms [160.0000-600.0000]



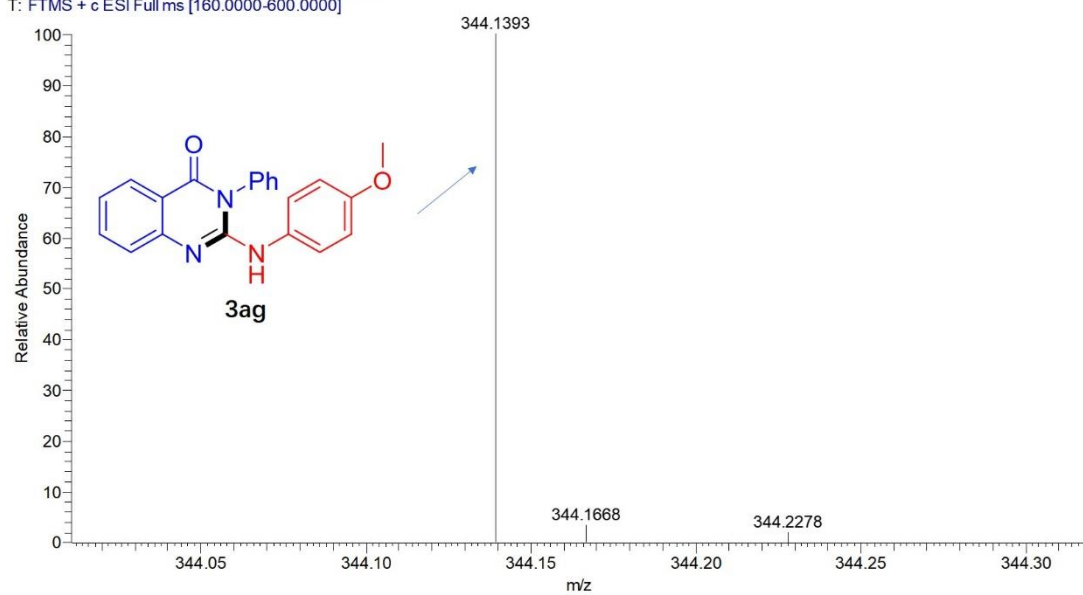
1212-2-HPL+ #2815 RT: 5.57 AV: 1 NL: 1.81E7
T: FTMS + c ESI Full ms [160.0000-600.0000]



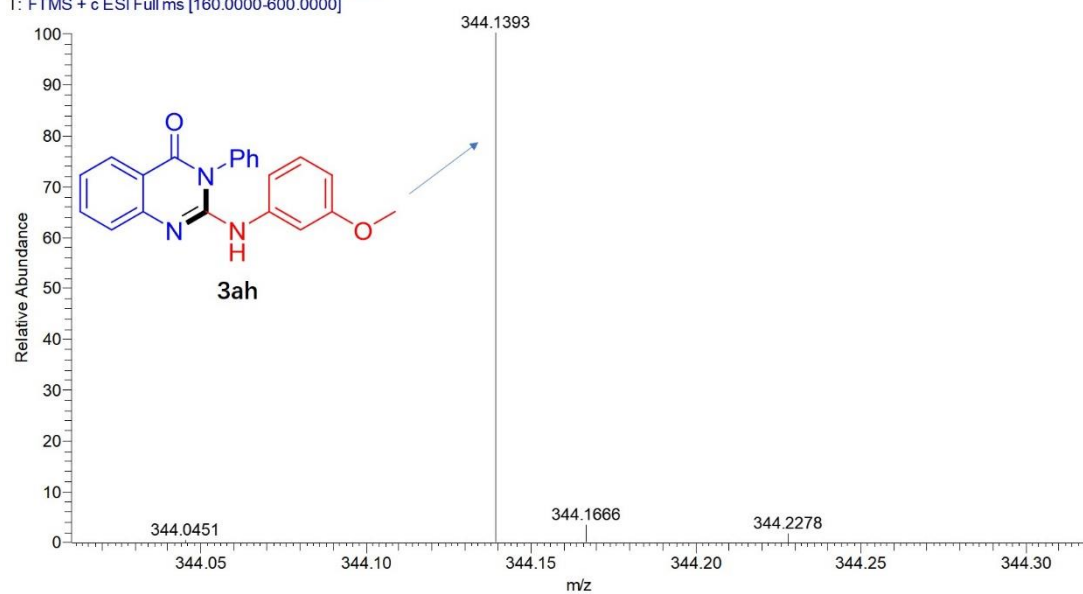
1212-2-HPL+ #3067 RT: 6.07 AV: 1 NL: 4.54E6
T: FTMS + c ESI Full ms [160.0000-600.0000]



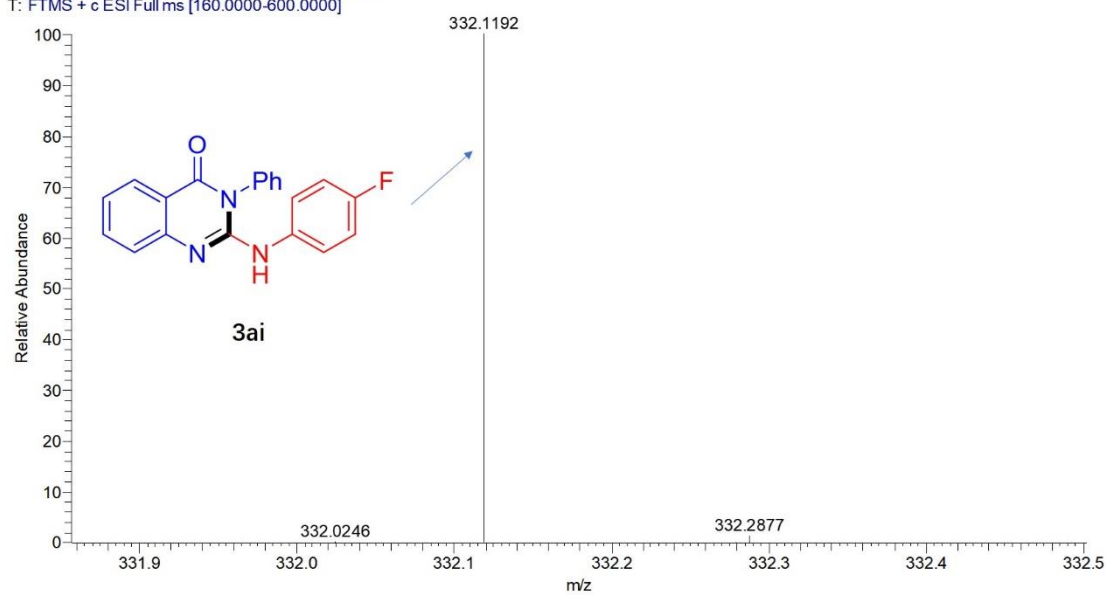
1212-2-HPL+ #3067 RT: 6.07 AV: 1 NL: 1.03E7
T: FTMS + c ESI Full ms [160.0000-600.0000]



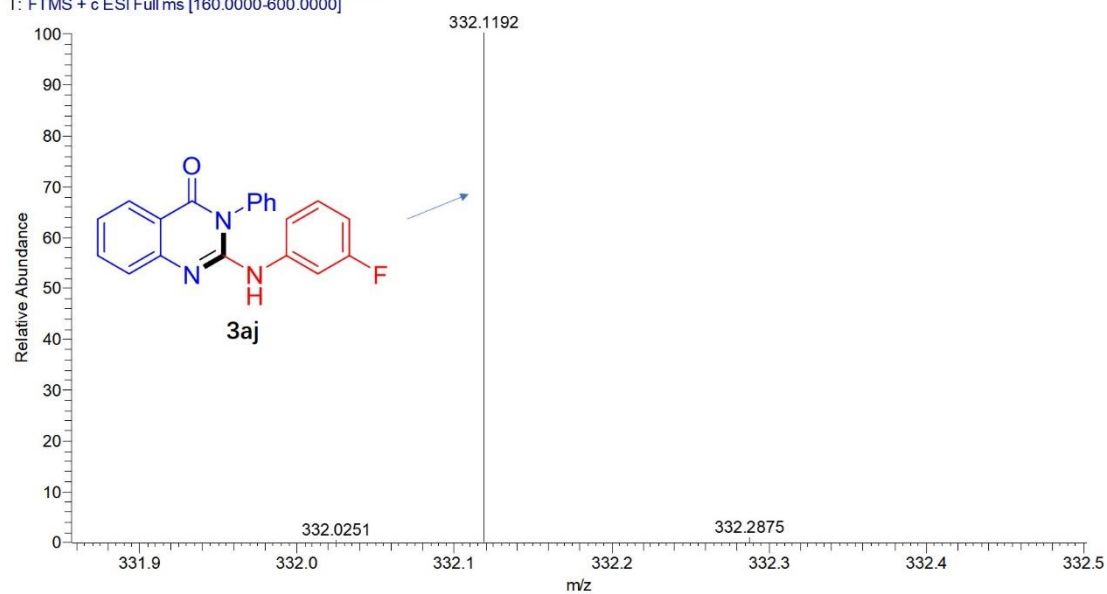
1212-2-HPL+ #3073 RT: 6.08 AV: 1 NL: 9.83E6
T: FTMS + c ESI Full ms [160.0000-600.0000]



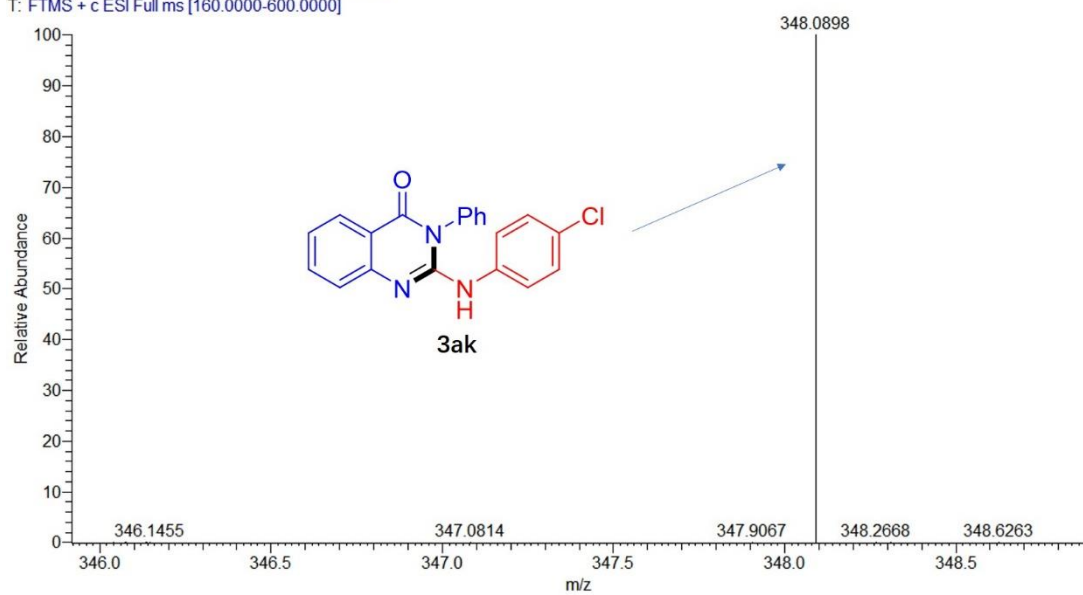
1212-2-HPL+ #3073 RT: 6.08 AV: 1 NL: 1.47E7
T: FTMS + c ESI Full ms [160.0000-600.0000]



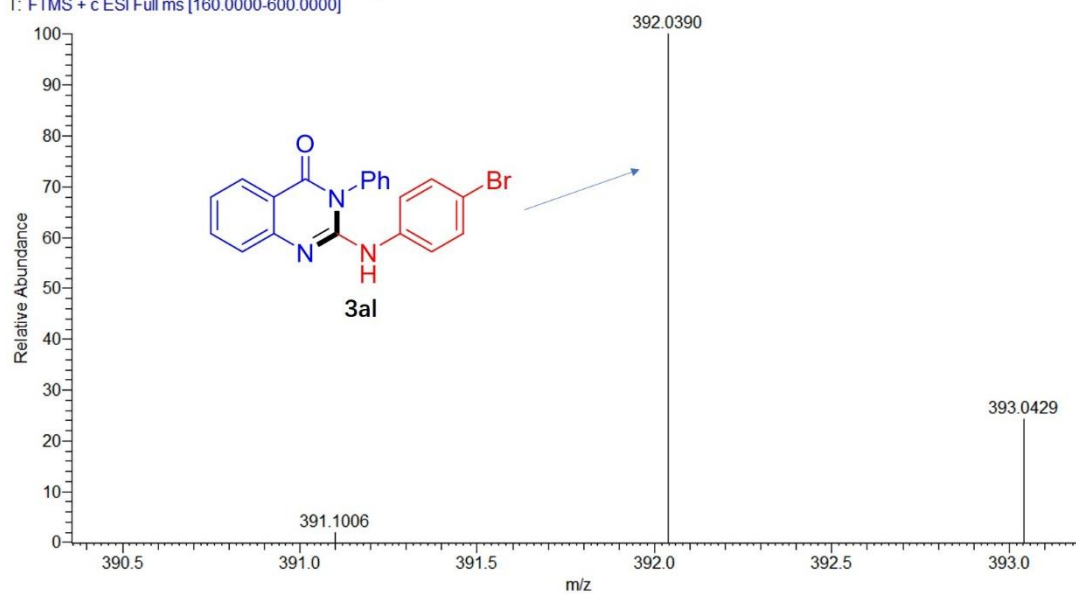
1212-2-HPL+ #3079 RT: 6.09 AV: 1 NL: 1.39E7
T: FTMS + c ESI Full ms [160.0000-600.0000]



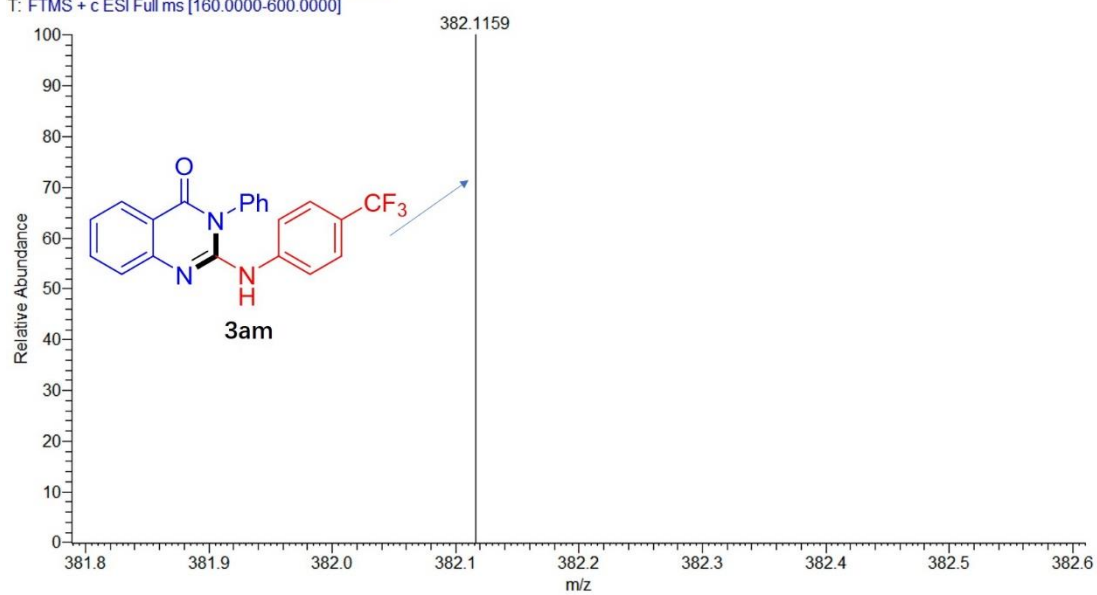
1212-2-HPL+ #2815 RT: 5.57 AV: 1 NL: 5.32E8
T: FTMS + c ESI Full ms [160.0000-600.0000]



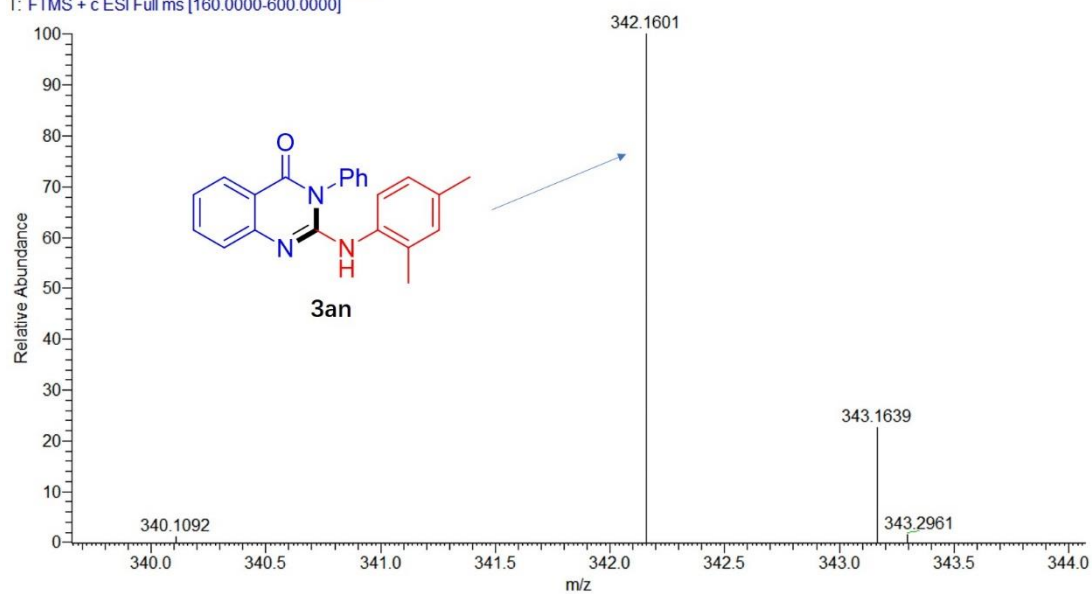
1212-2-HPL+ #2815 RT: 5.57 AV: 1 NL: 8.54E6
T: FTMS + c ESI Full ms [160.0000-600.0000]



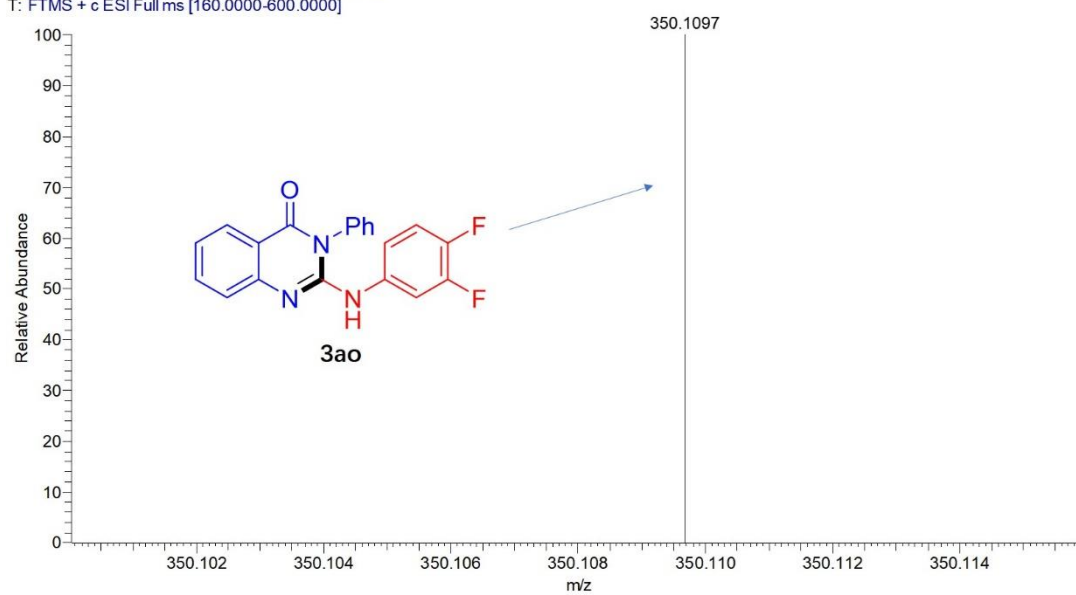
1212-2-HPL+ #2743 RT: 5.43 AV: 1 NL: 1.08E8
T: FTMS + c ESI Full ms [160.0000-600.0000]



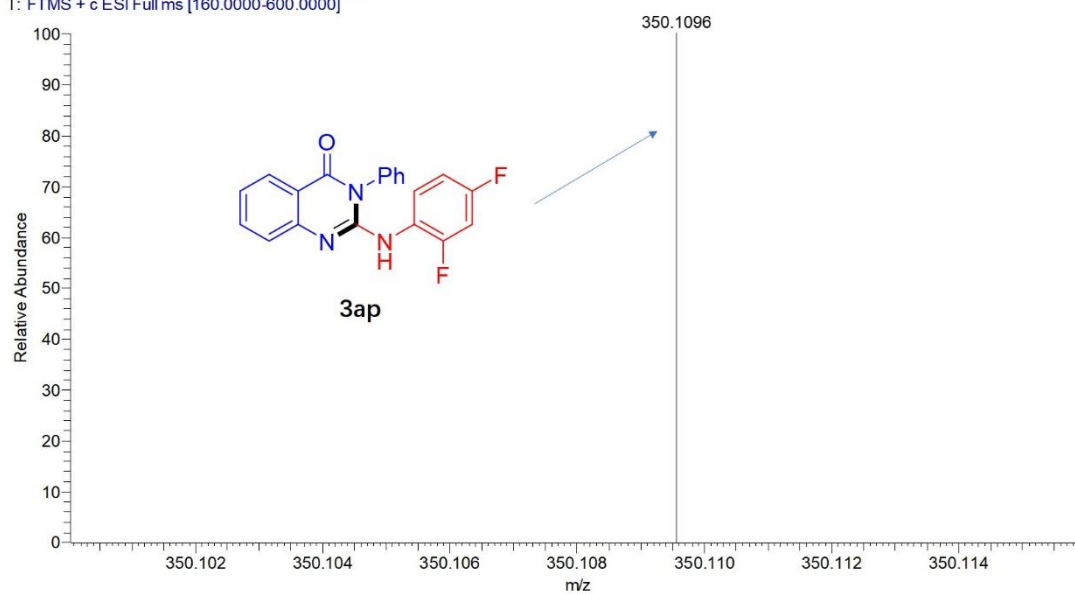
1212-2-HPL+ #2815 RT: 5.57 AV: 1 NL: 1.81E7
T: FTMS + c ESI Full ms [160.0000-600.0000]



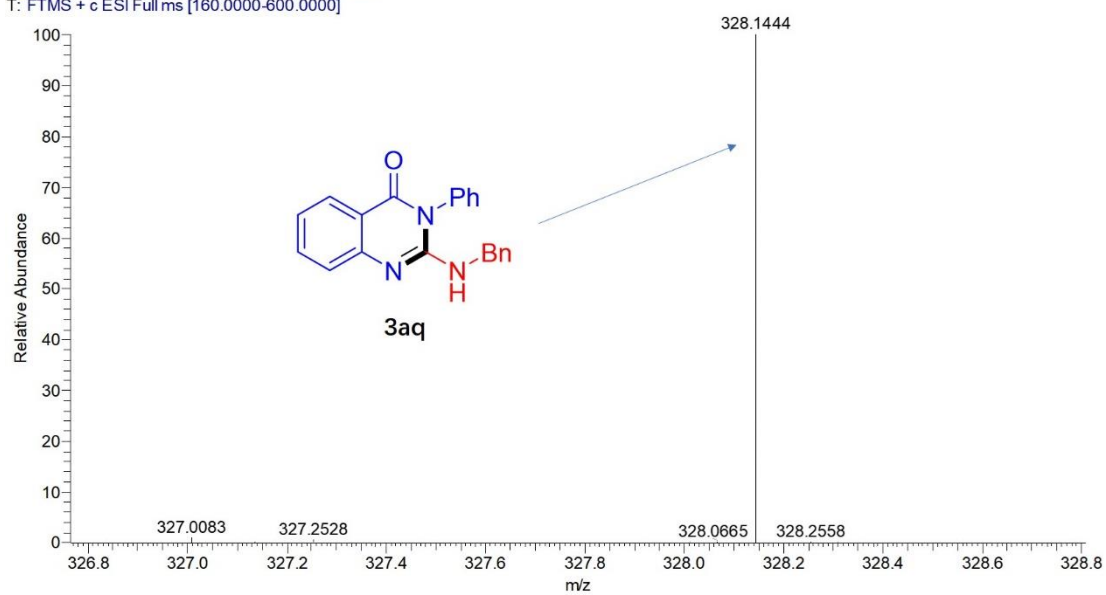
1212-2-HPL+ #3067 RT: 6.07 AV: 1 NL: 3.71E6
T: FTMS + c ESI Full ms [160.0000-600.0000]



1212-2-HPL+ #3097 RT: 6.12 AV: 1 NL: 2.36E6
T: FTMS + c ESI Full ms [160.0000-600.0000]



1212-2-HPL+ #3067 RT: 6.07 AV: 1 NL: 2.83E7
T: FTMS + c ESI Full ms [160.0000-600.0000]



1212-2-HPL+ #3067 RT: 6.07 AV: 1 NL: 4.44E6
T: FTMS + c ESI Full ms [160.0000-600.0000]

