

Supplementary information

**Onion Peel Derived Carbon Nanoparticles Incorporated Polysulfone
Membranes: Enhanced Dye Removal from Water**

Aman Sharma^{a,b}, Soumi Datta^c, R K Sanjana^b, B M Pooja^b, Suryasarathi Bose^c, Gurumurthy Hegde^{a,b*}

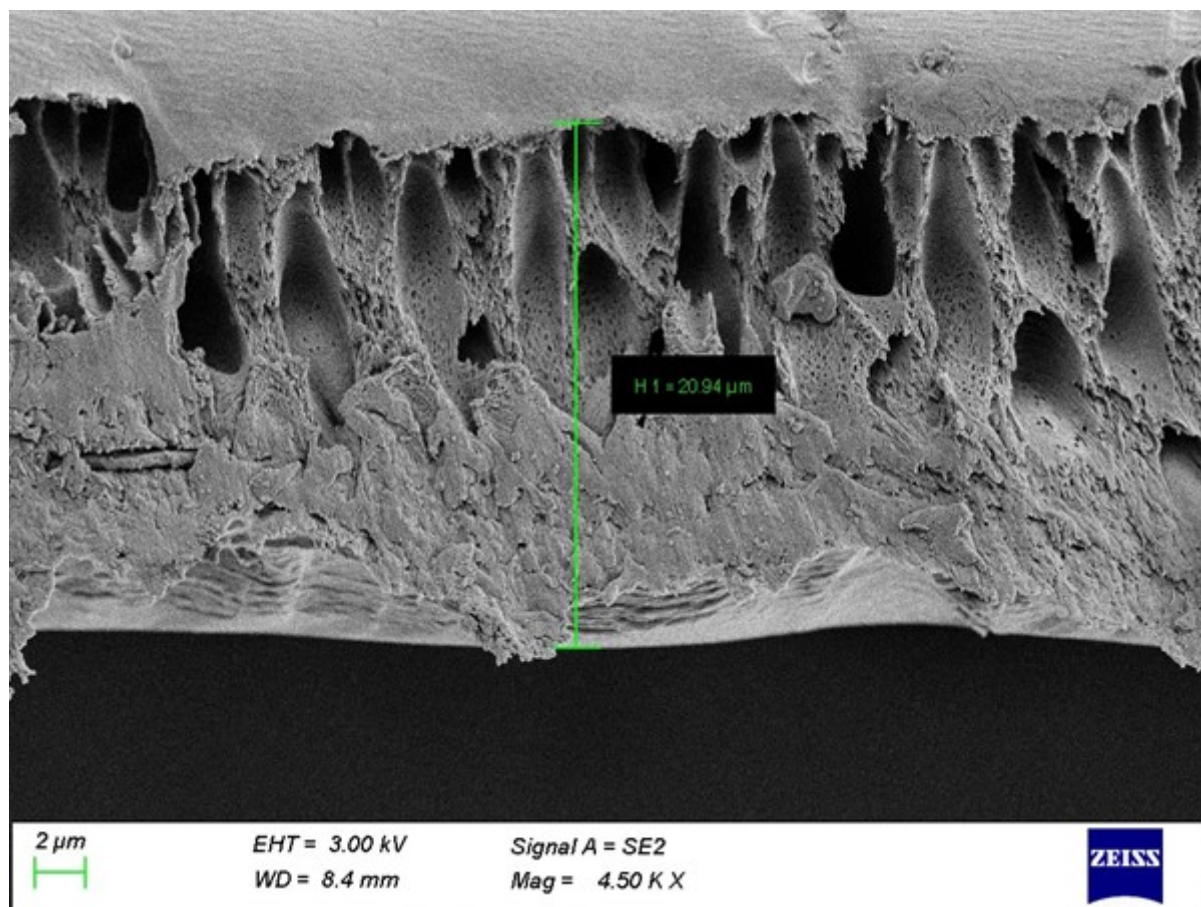


Fig S1. Magnified image of the Interfacial region of membrane

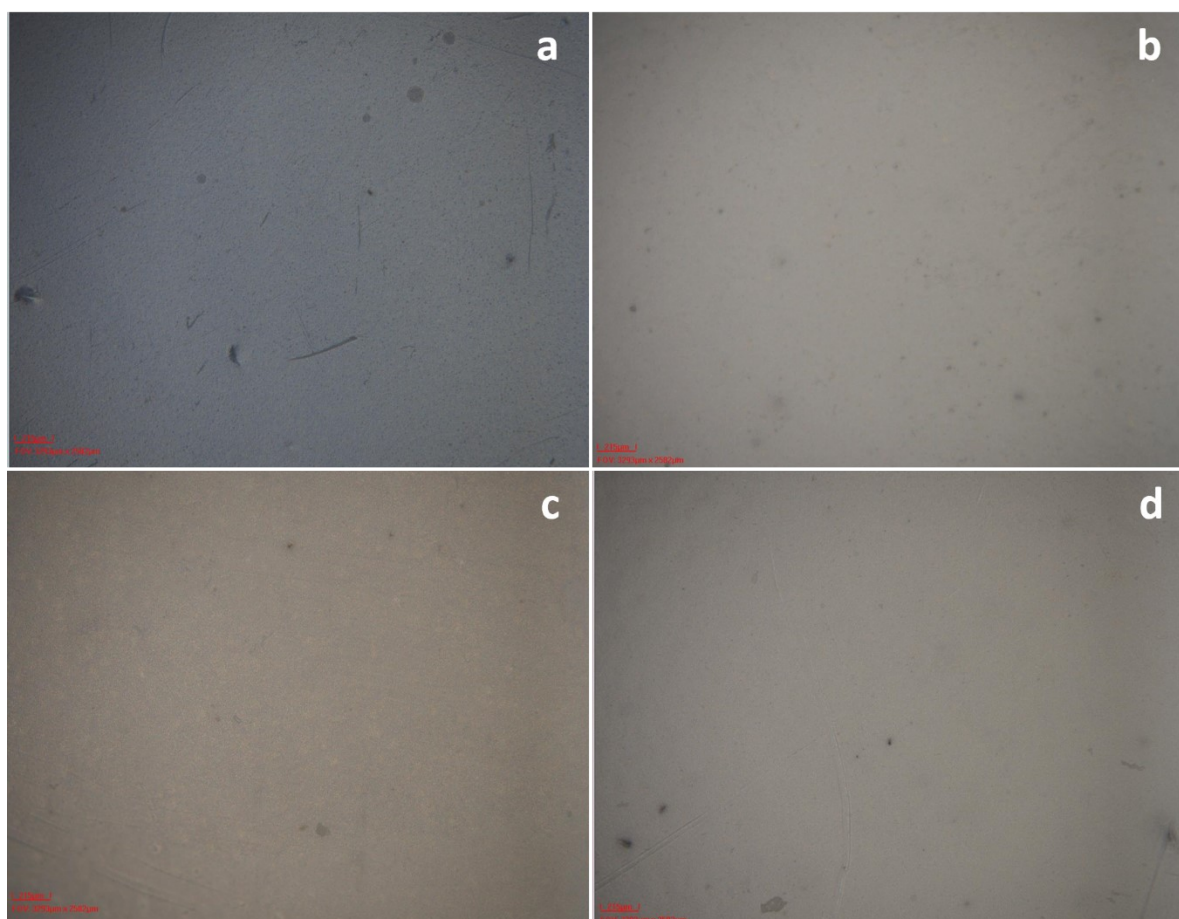


Fig S2. Optical Profilometry 2D- image of ON11-10@PSU pad at different thickness a) 30 μ , b) 60 μ , c) 90 μ , and d) 120 μ

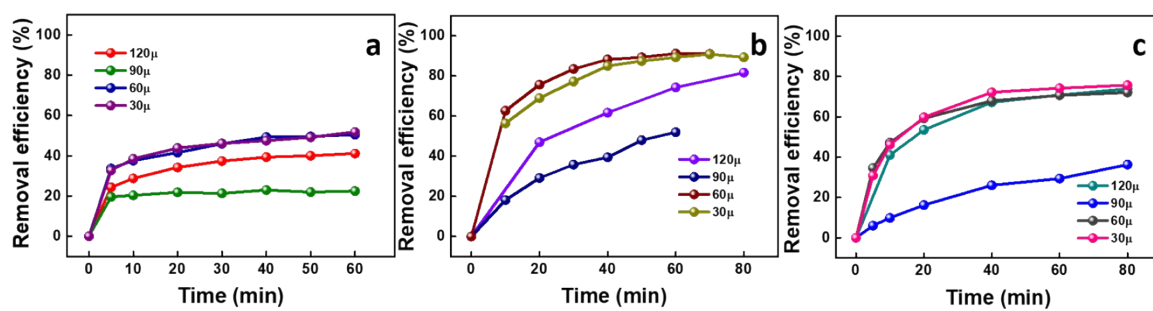


Fig S3. Effect of thickness of membrane for a) MB, b) MG, and c) RhB dye adsorption

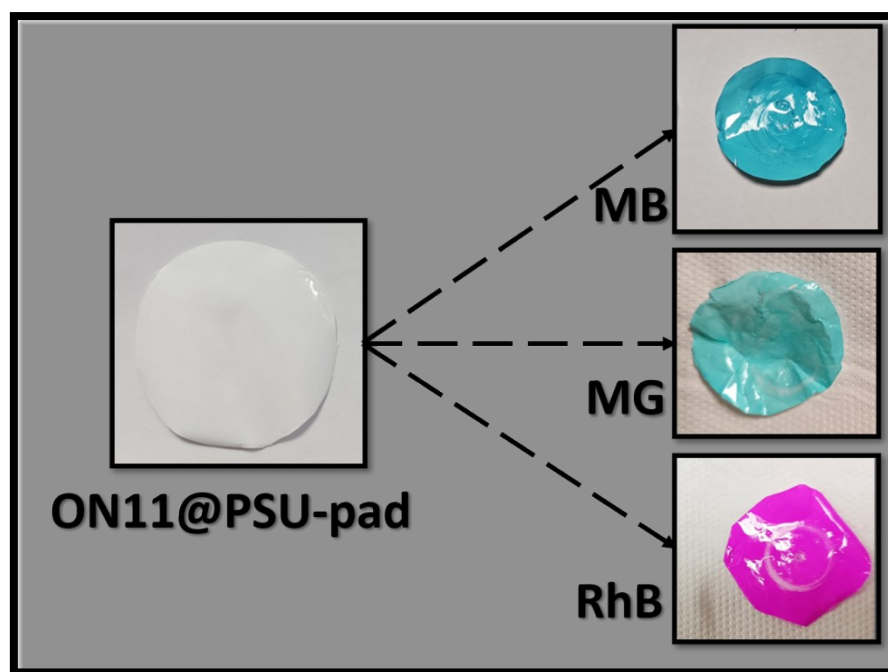


Fig S4. The adsorption of different dyes onto membranes

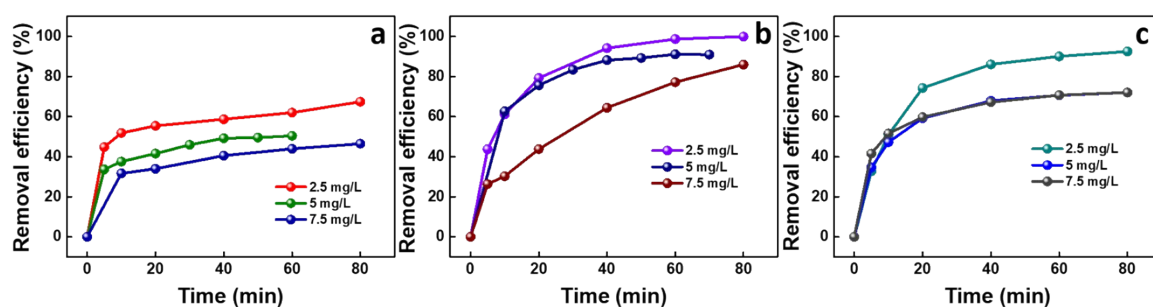


Fig S5: Effect of dye concentration on membrane for a) MB, b) MG and c) RhB dye adsorption

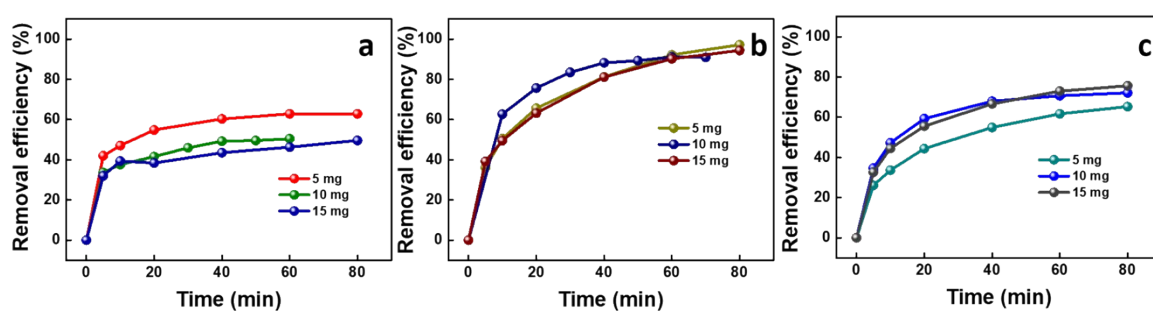


Fig S6: Effect of nanoparticle dosage on the membrane for a) MB, b) MG, and c) RhB dye adsorption

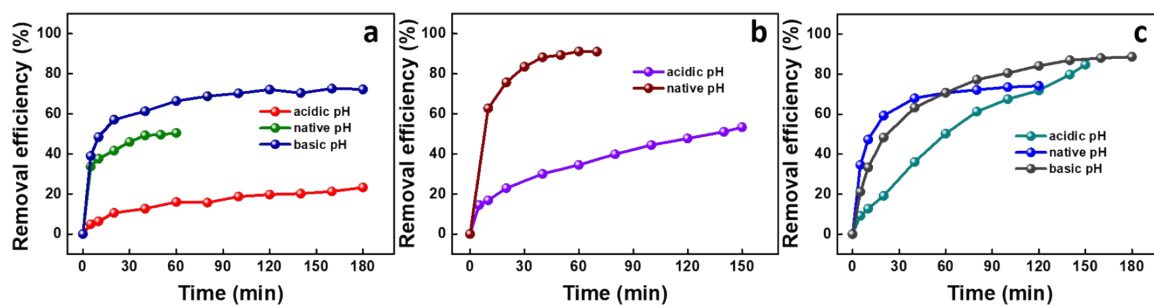


Fig S7. Effect of pH of dye solution on membrane for a) MB, b) MG, and c) RhB dye adsorption

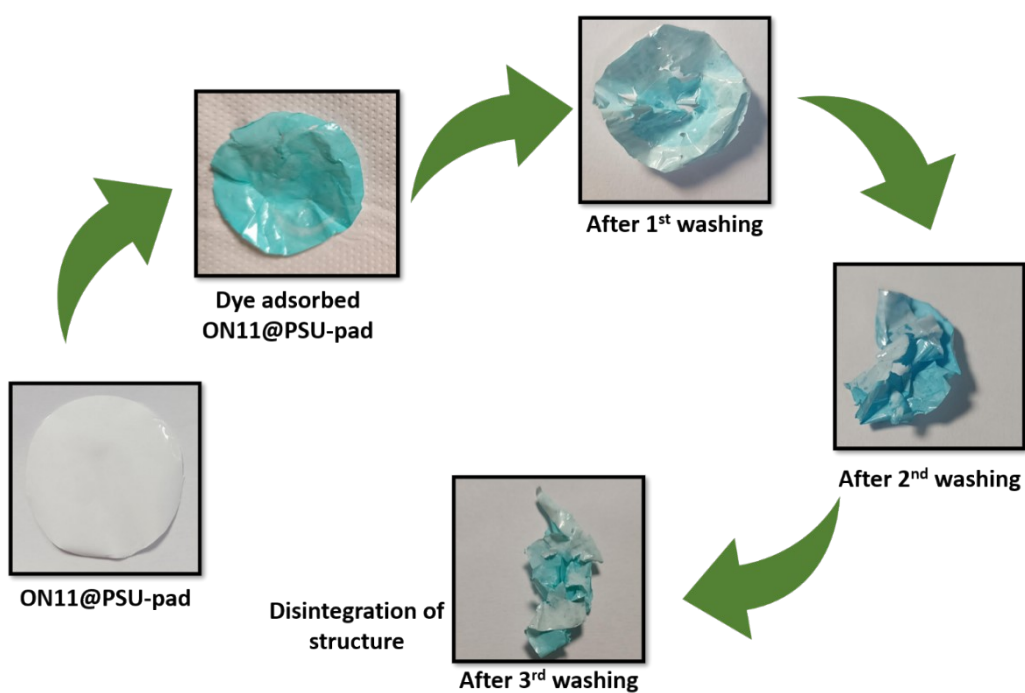


Fig S8. Disintegration of the membrane with an increase in the number of recyclability test

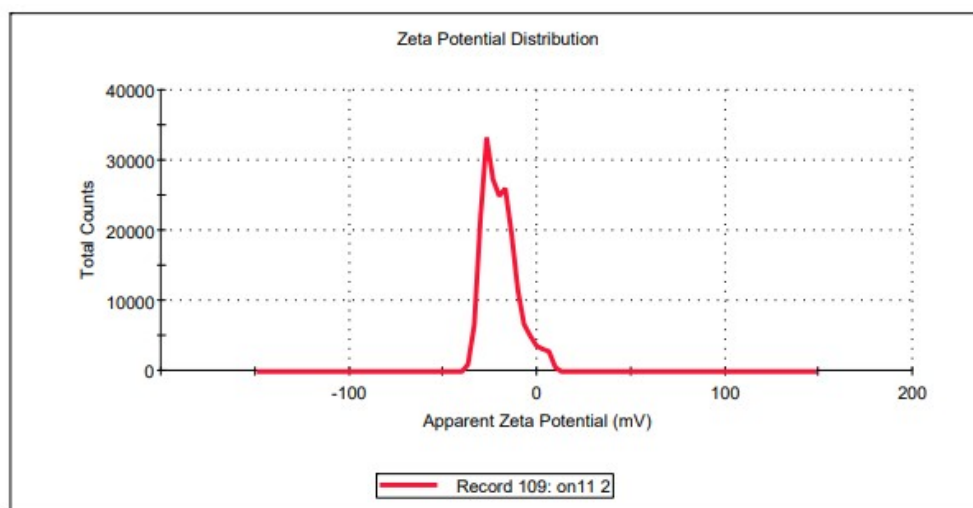


Fig S9. Zeta potential ON11 CNS

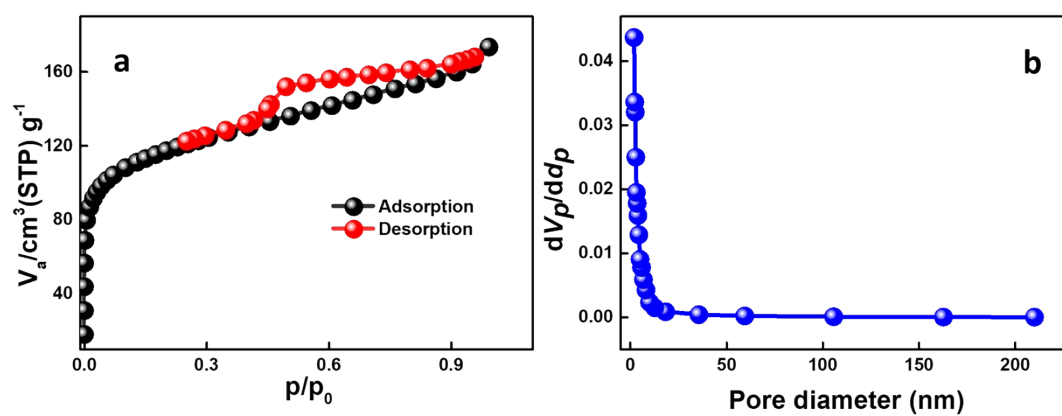


Fig S10. a) N_2 adsorption-desorption curves; b) Pore size distribution of ON11 CNS