

Supporting Information

Injectable thermosensitive hydrogel co-loading with ATRi and Doxorubicin for the treatment of triple-negative breast cancer

Lan Wei,^{†a} Jiaru Zhu,^{†a} Qi Wang,^a Yuanfang He,^a Haili Yan,^b Long Gao,^{*c} Chenyang Zhang,^d and Jiangfeng Du,^{*b,e,f}

^aSchool of Pharmacy, Medicinal Basic Research Innovation Center of Chronic Kidney Disease, Ministry of Education, Shanxi Provincial Key Laboratory of Drug Synthesis and Novel Pharmaceutical Preparation Technology, Shanxi Medical University, Taiyuan 030001, Shanxi Province, China.

^bDepartment of Medical Imaging, Shanxi Key Laboratory of Intelligent Imaging and Nanomedicine, First Hospital of Shanxi Medical University, Taiyuan, 030001, Shanxi Province, China.

^cDepartment of Oncological and Vascular Intervention, First Hospital of Shanxi Medical University, Taiyuan 030001, Shanxi Province, China.

^dDepartment of Biotherapy, Beijing Hospital, National Center of Gerontology, Institute of Geriatric Medicine, Chinese Academy of Medical Sciences, Beijing 100730, China.

^eKey Laboratory of Cellular Physiology at Shanxi Medical University, Ministry of Education, Taiyuan 030001, Shanxi Province, China.

^fCollaborative Innovation Center for Molecular Imaging of Precision Medicine, Shanxi Medical University, Taiyuan 030001, Shanxi Province, China

*Corresponding author.

E-mail address: gaolong@sxmu.edu.cn (L. Gao), dujf@sxmu.edu.cn (J. F. Du).

†These authors contributed equally to this work.

Supplementary Figures

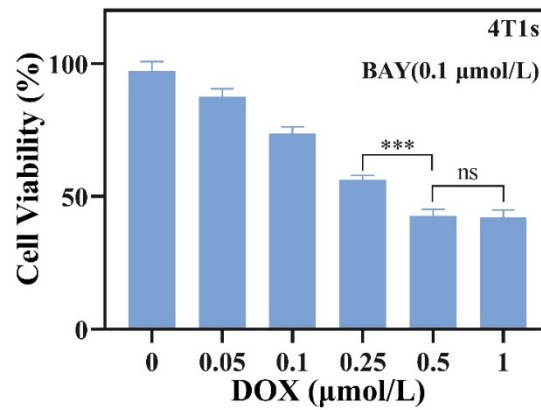


Figure S1: CCK-8 assay of co-incubate 4T1 cells with 0.1 μmol/L BAY plus 0, 0.05, 0.1, 0.25, 0.5, 1 μmol/L DOX for 48h.

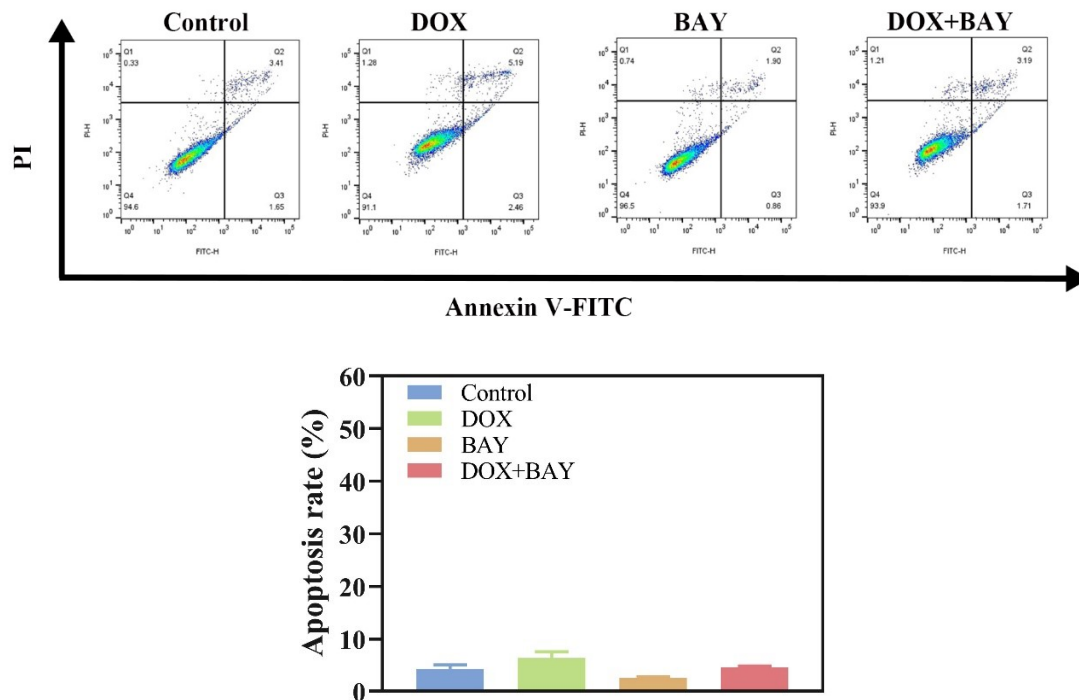


Figure S2: The analysis of cell apoptosis by flow cytometric at 24 h. Statistical analysis: group DOX+BAY was compared with other groups. Data are presented as mean ± SD (*p < 0.05, **p < 0.01, ***p < 0.001).

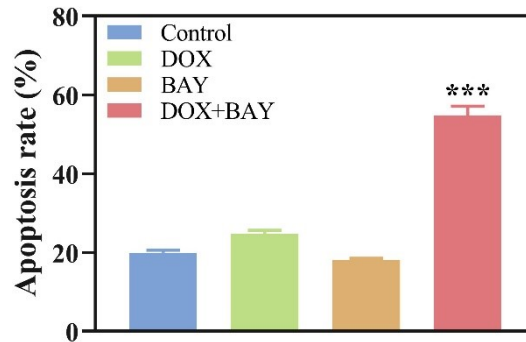
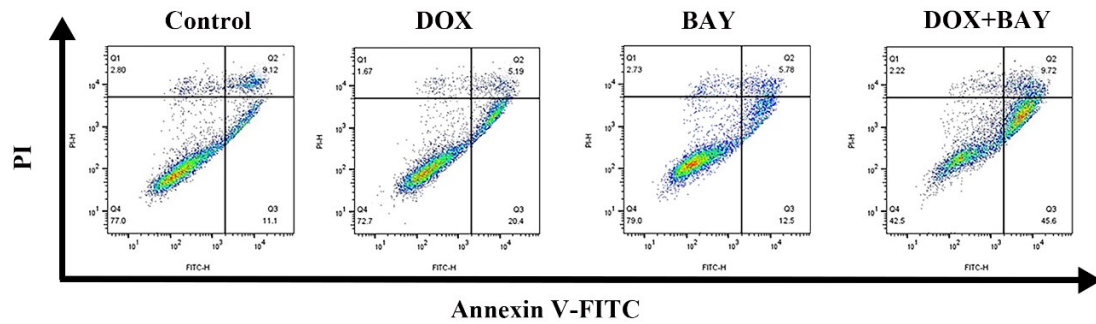


Figure S3: The analysis of cell apoptosis by flow cytometric at 72 h. Statistical analysis: group DOX+BAY was compared with other groups. Data are presented as mean \pm SD (* $p < 0.05$, ** $p < 0.01$, *** $p < 0.001$).

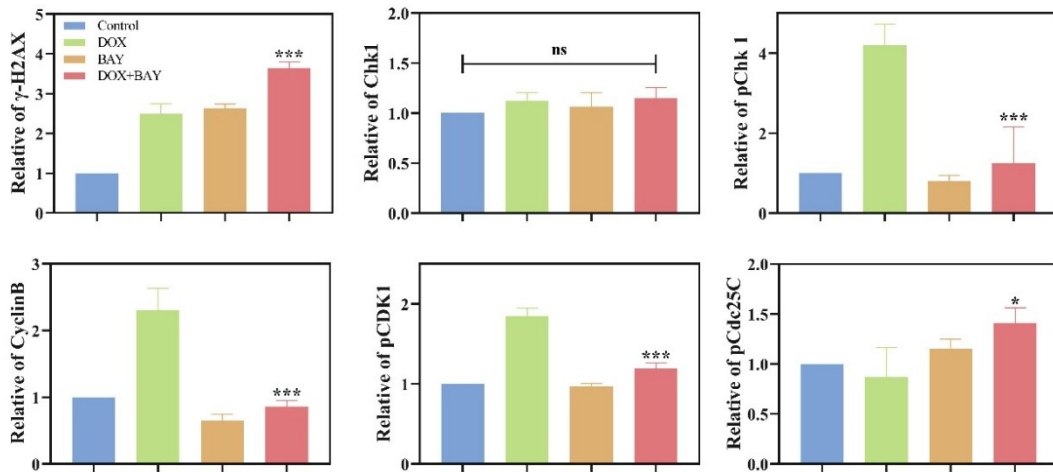


Figure S4: The statistic of Figure 3c and 3d. Statistical analysis: group DOX+BAY was compared with group DOX. Data are presented as mean \pm SD (* $p < 0.05$, ** $p < 0.01$, *** $p < 0.001$).